



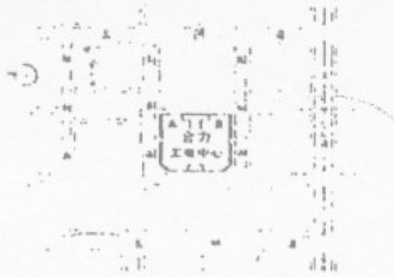
一樓至二樓平面圖  
1st ~ 2nd Floor Plan



合力工業中心A座 Hoplite Industrial Centre Block A

NOT TO SCALE, FOR IDENTIFICATION PURPOSE ONLY

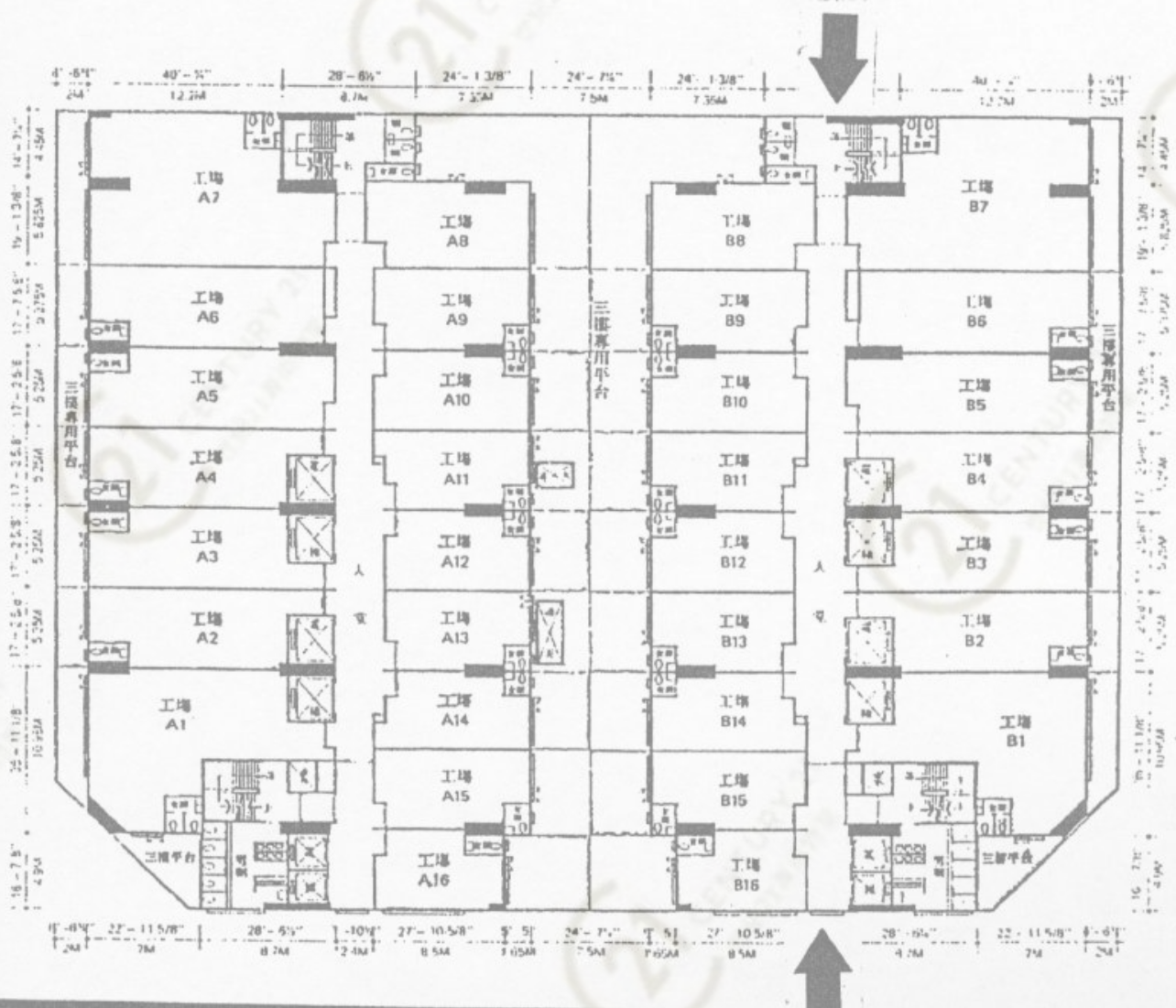
圖中所有數據比例，一概只作參考之用



地盤位置圖 Location

樓底高度：15呎3吋  
每平方呎負重力：300磅

### 三樓平面圖 3rd Floor Plan



### 合力工業中心A座 Hoplite Industrial Centre Block A

NOT TO SCALE, FOR IDENTIFICATION PURPOSE ONLY

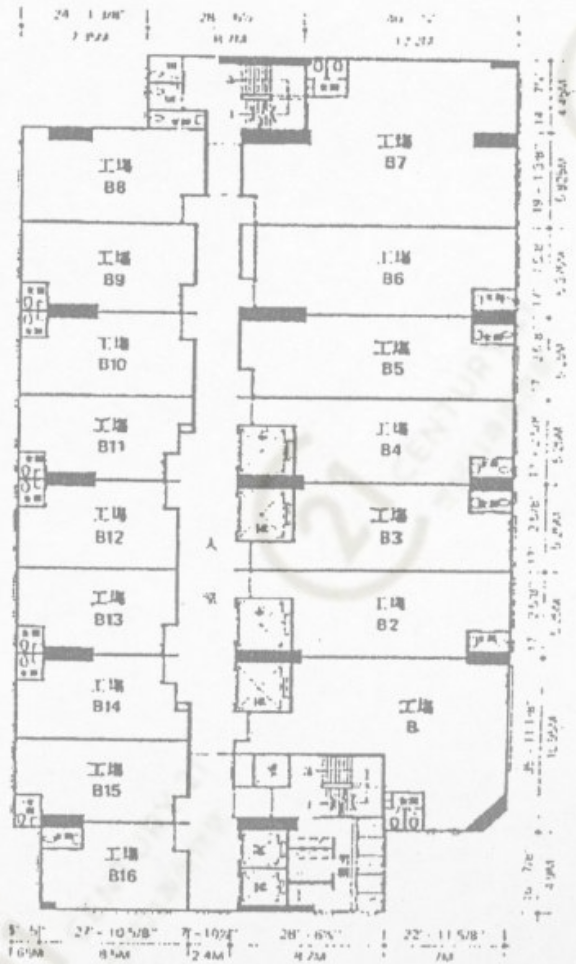
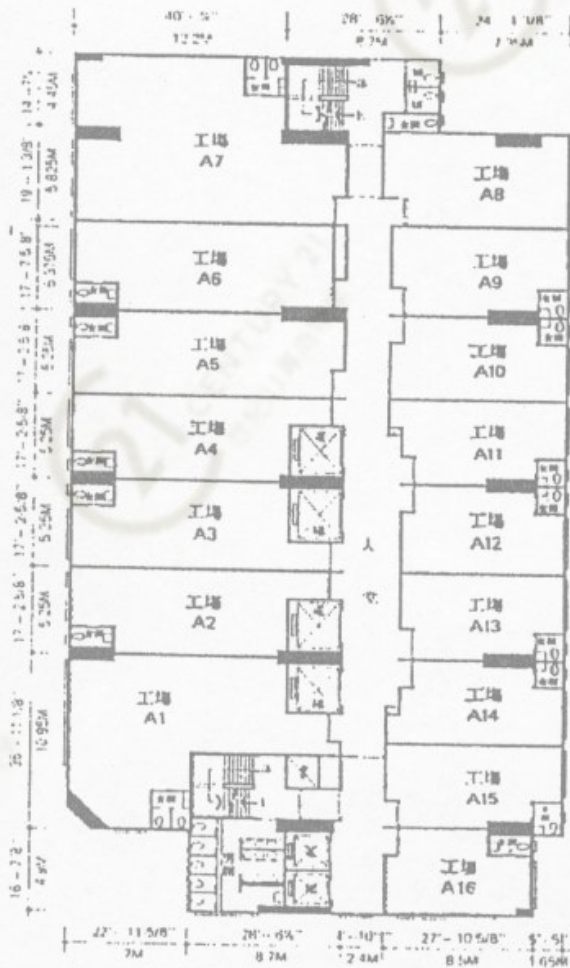
圖中所有數據比例，一概只作參考之用



地盤位置圖 Location

四至六樓樓底高度：9呎6吋  
七樓樓底高度：9呎9吋  
每平方米負重力：130磅

### 四樓至七樓平面圖 4th~7th Floor Plan



### 合力工業中心A座 Hoplite Industrial Centre Block A

NOT TO SCALE, FOR IDENTIFICATION PURPOSE ONLY

圖中所有數據比例，一概只作參考之用





樓底高度：15呎3吋  
每平方呎負重力：300磅

# 八樓平面圖 8th Floor Plan

地盤位置圖 Location



合力工業中心A座 Hoplite Industrial Centre Block A

NOT TO SCALE, FOR IDENTIFICATION PURPOSE ONLY

圖中所有數據比例，一概只作參考之用

# 平面圖

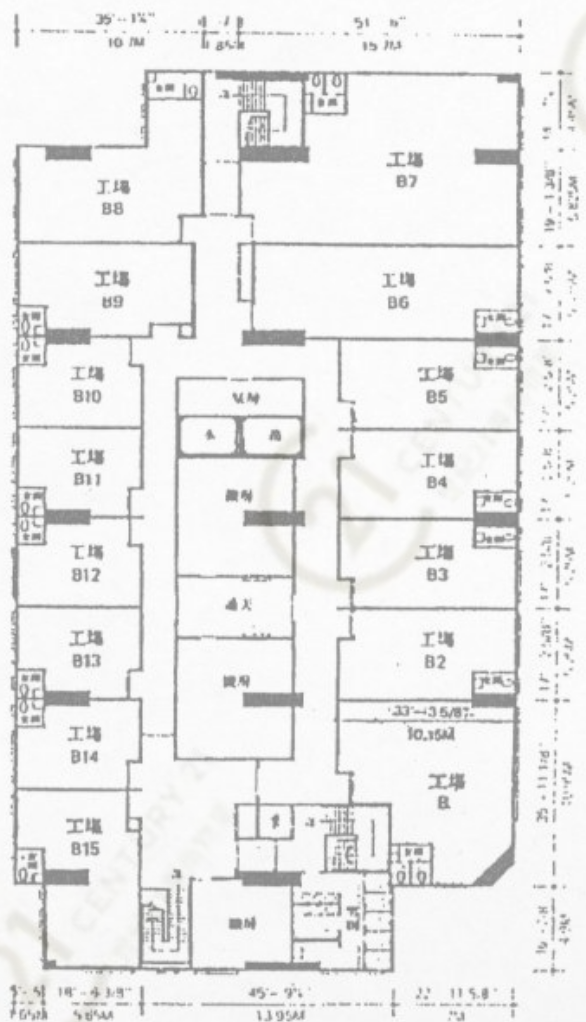
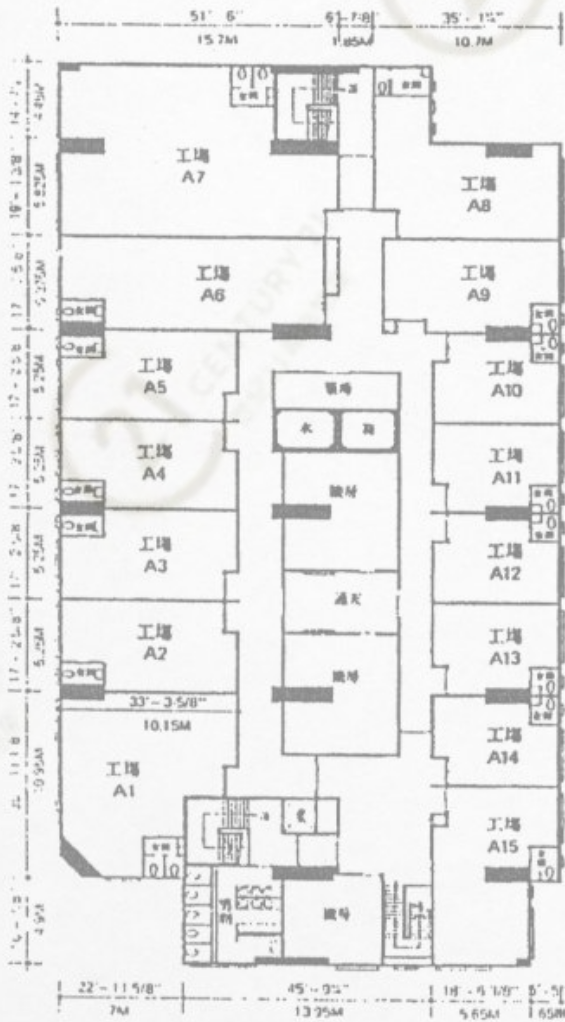
# Floor Plan



地盤位置圖 Location

樓底高度：9呎6吋  
每平方呎負重力：150磅

## 九樓平面圖 9th Floor Plan



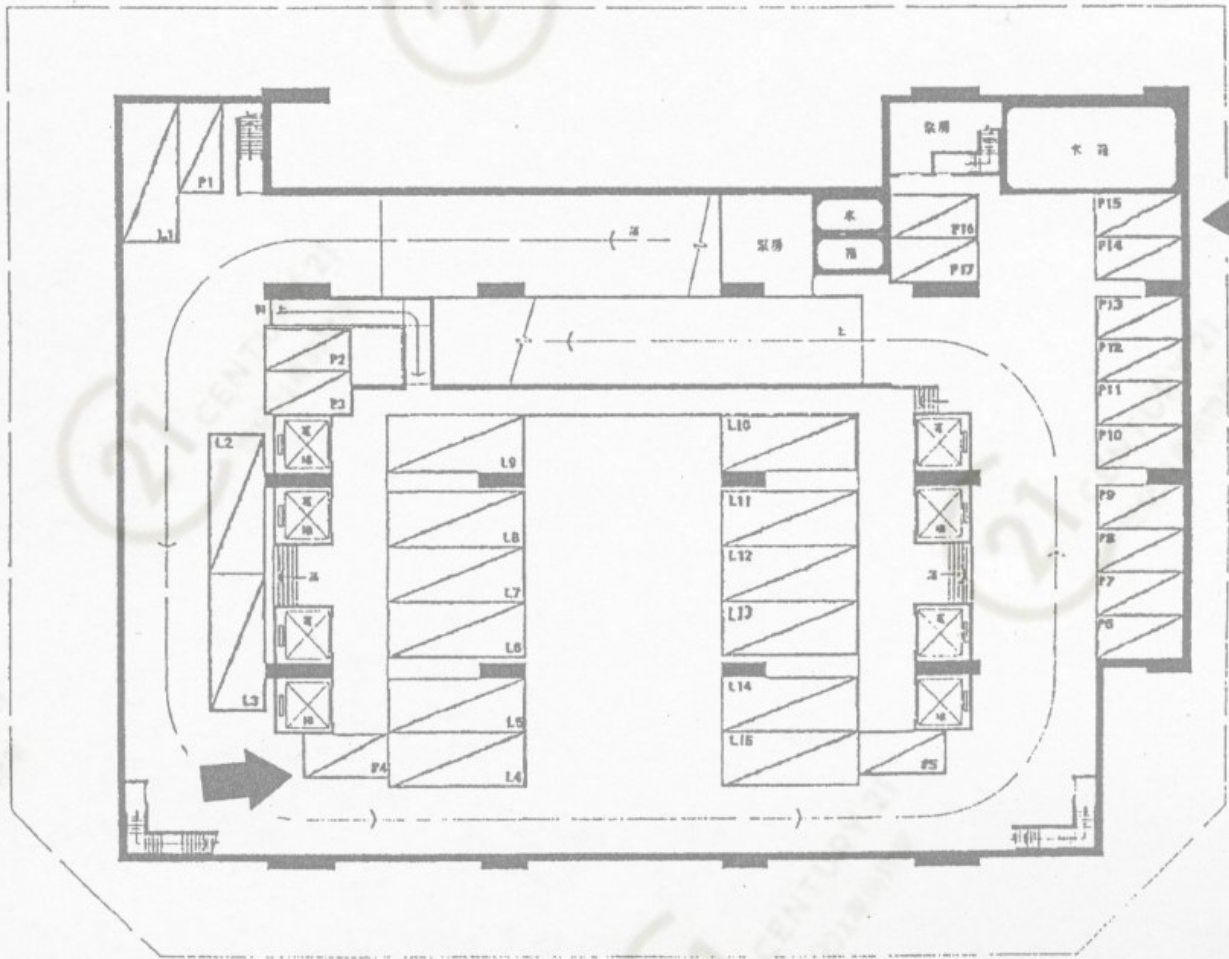
## 合力工業中心A座 Hoptite Industrial Centre Block A

NOT TO SCALE, FOR IDENTIFICATION PURPOSE ONLY

圖中所有數據比例，一概只作參考之用



地庫停車場平面圖  
Basement Plan (Carpark)



合力工業中心A座 Hoplite Industrial Centre Block A

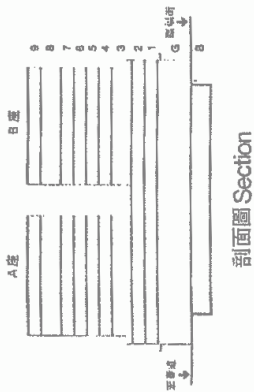
NOT TO SCALE, FOR IDENTIFICATION PURPOSE ONLY

圖中所有數據比例，一概只作參考之用



# 平面圖

# Floor Plan



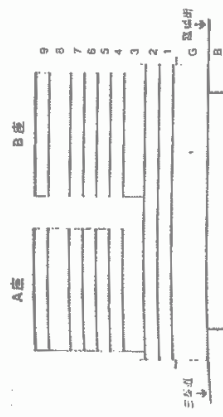
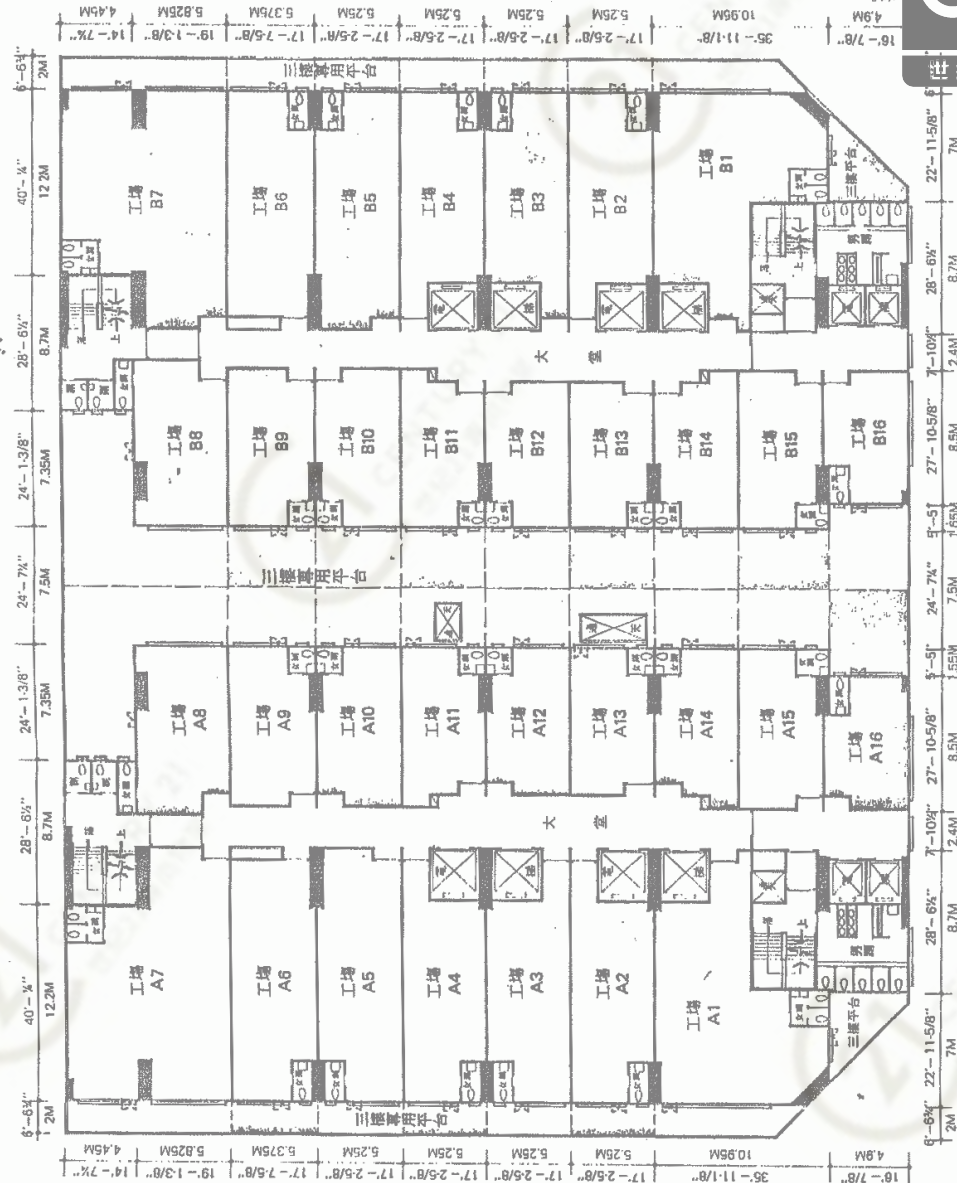
一樓高度：9呎6吋  
 二樓高度：9呎9吋  
 每平方呎負重力：250磅

## 一樓至二樓平面圖 1st ~ 2nd Floor Plan

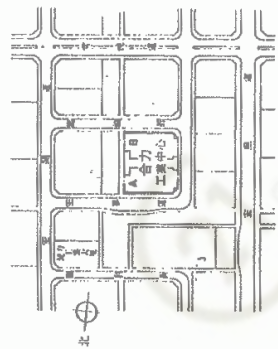
### 合力工業中心A座 Hoplite Industrial Centre Block A

NOT TO SCALE, FOR IDENTIFICATION PURPOSE ONLY

圖中所有數據比例，一概只作參考之用



剖面圖 Section



地盤位置圖 Location

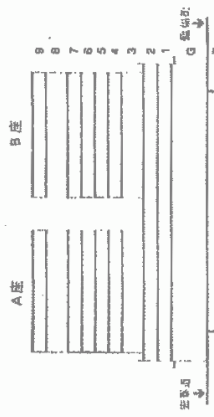
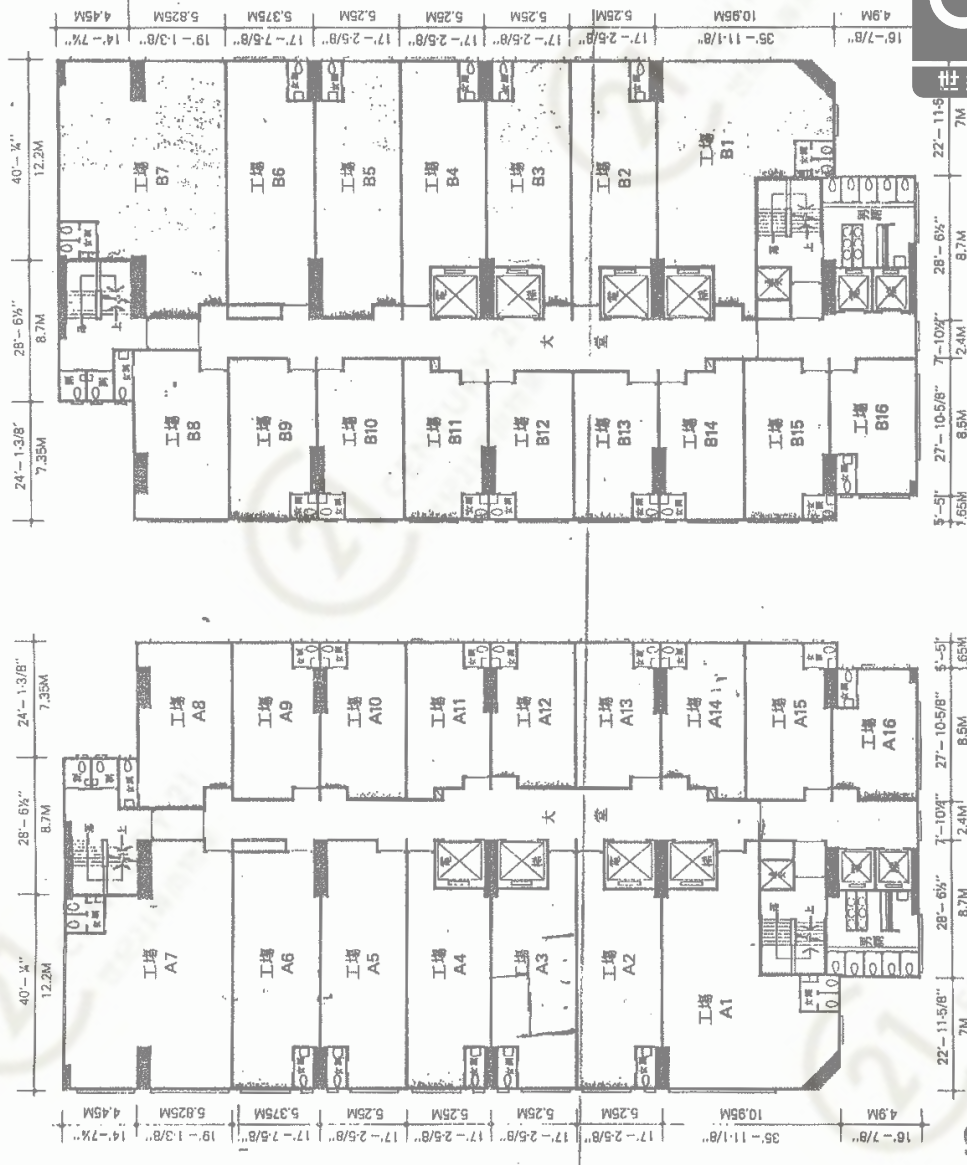
樓底高度：15呎3吋  
每平方呎負重力：300磅

三樓平面圖  
3rd Floor Plan

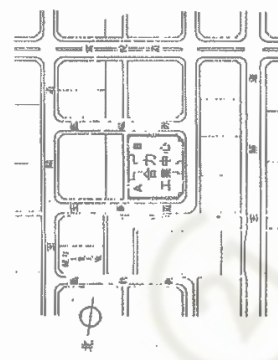
合力工業中心A座 Hoptite Industrial Centre Block A

NOT TO SCALE, FOR IDENTIFICATION PURPOSE ONLY  
圖中所有數據比例，一概只作參考之用





剖面圖 Section



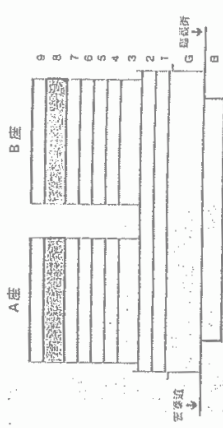
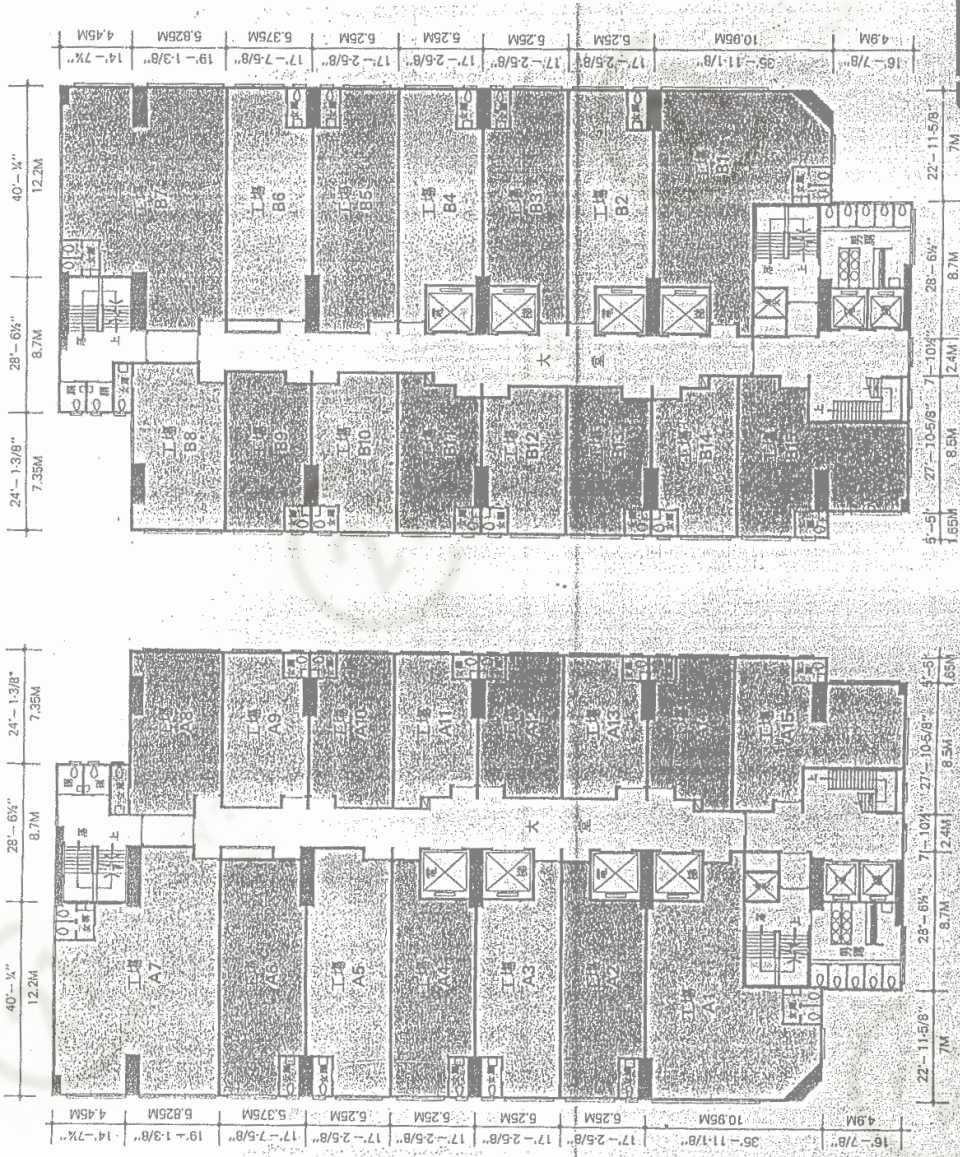
地盤位置圖 Location

四至六樓樓底高度：9呎6吋  
 七樓樓底高度：9呎9吋  
 每平方呎負重力：150磅

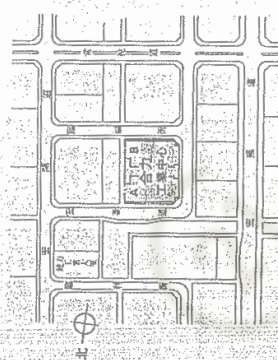
四樓至七樓平面圖  
 4th~7th Floor Plan

合力工業中心A座 Hoplite Industrial Centre Block A

NOT TO SCALE, FOR IDENTIFICATION PURPOSE ONLY  
 圖中所有數據比例，一概只作參考之用



剖面圖 Section



地盤位置圖 Location

樓底高度：15呎 3吋  
每平方呎負重力：300磅

八樓平面圖  
8th Floor Plan

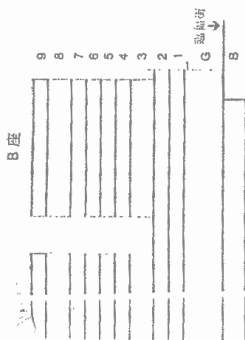
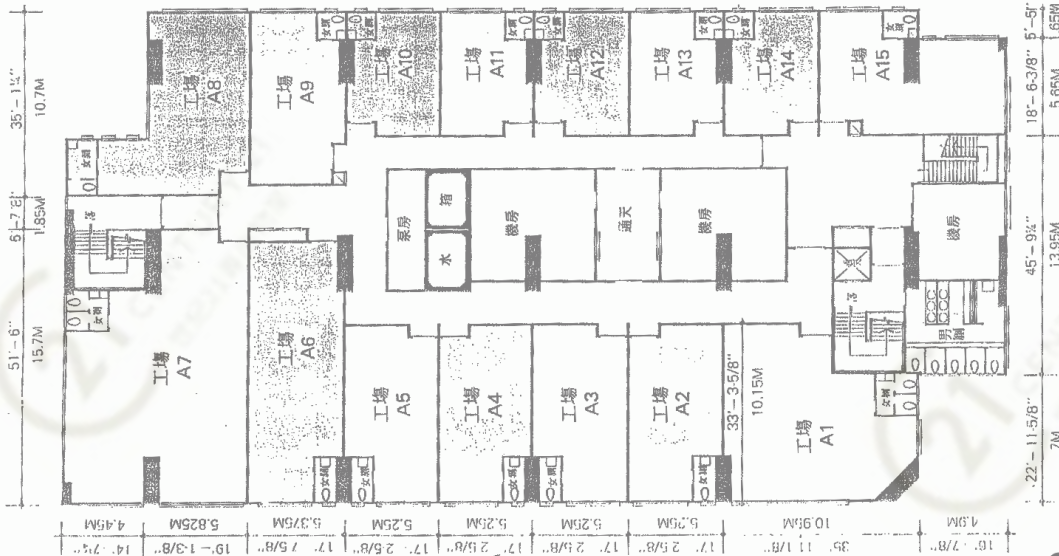
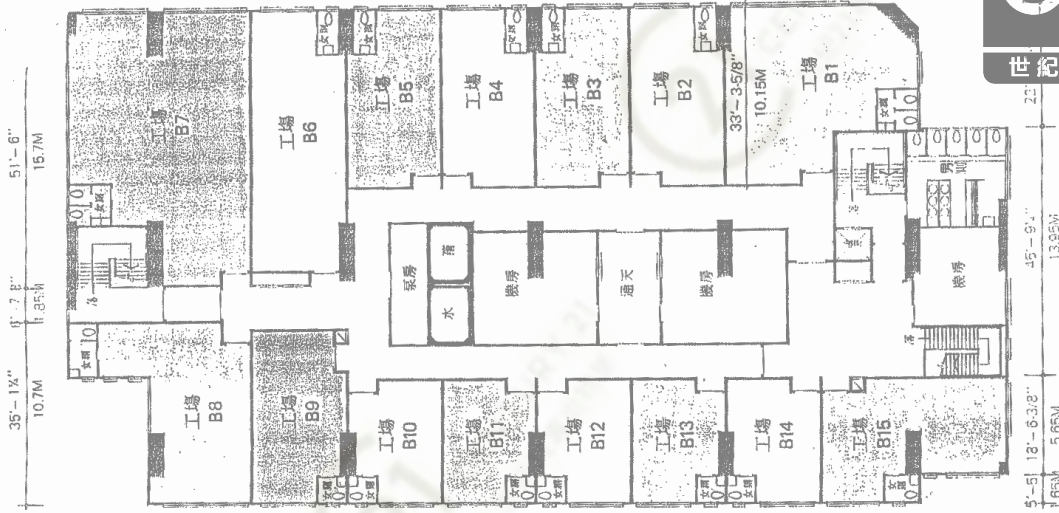
合力工業中心A座 Hoplite Industrial Centre Block A

NOT TO SCALE, FOR IDENTIFICATION PURPOSE ONLY  
圖中所有數據比例，一概只作參考之用

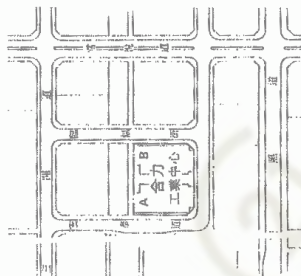


# 平面圖

# Floor Plan



剖面圖 Section



主盤立置圖 Location

樓底高度：9呎6吋  
 呎負電力：150磅

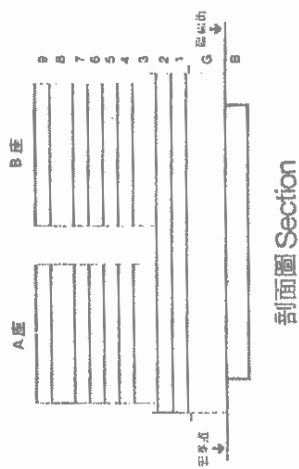
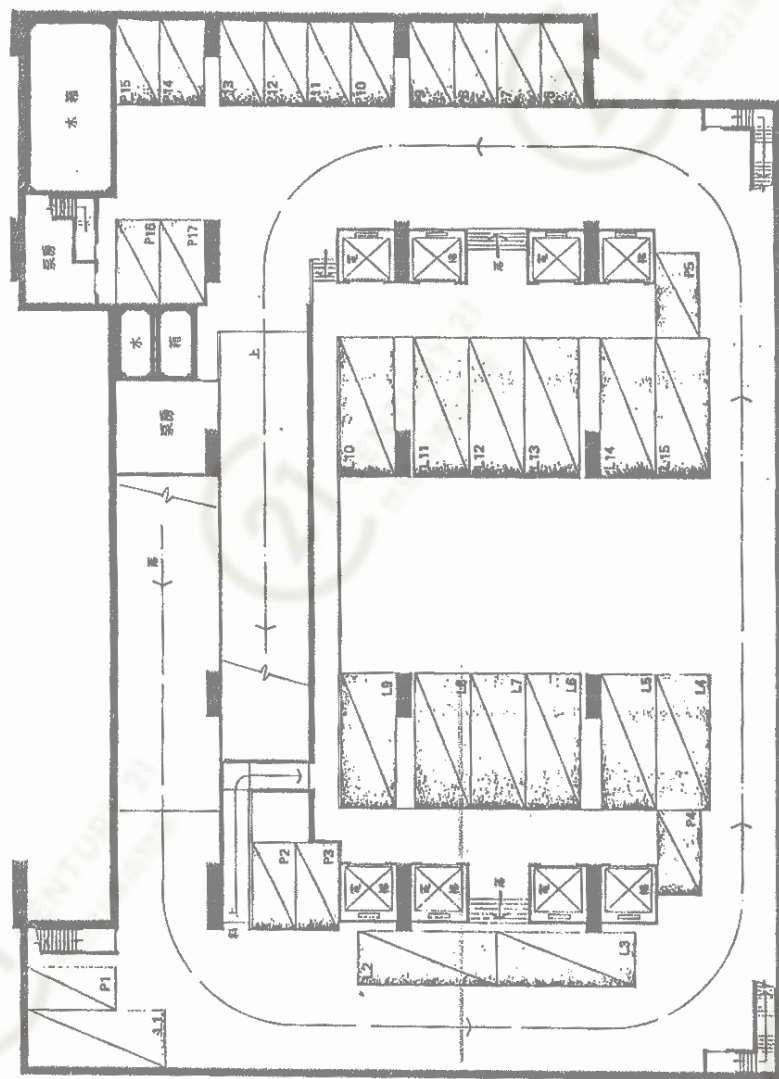
## 九樓平面圖 9th Floor Plan

### 合力工業中心A座 Hoplite Industrial Centre Block A

NOT TO SCALE, FOR IDENTIFICATION PURPOSE ONLY

圖中所有數據比例，一概只作參考之用





地庫停車場平面圖 Basement Plan (Carpark)

合力工業中心A座 Hoplite Industrial Centre Block A

NOT TO SCALE, FOR IDENTIFICATION PURPOSE ONLY

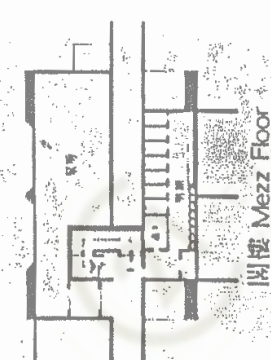
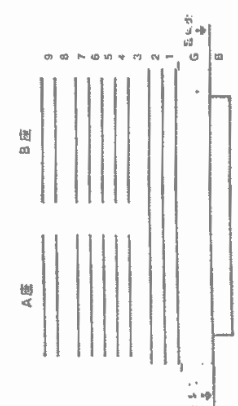
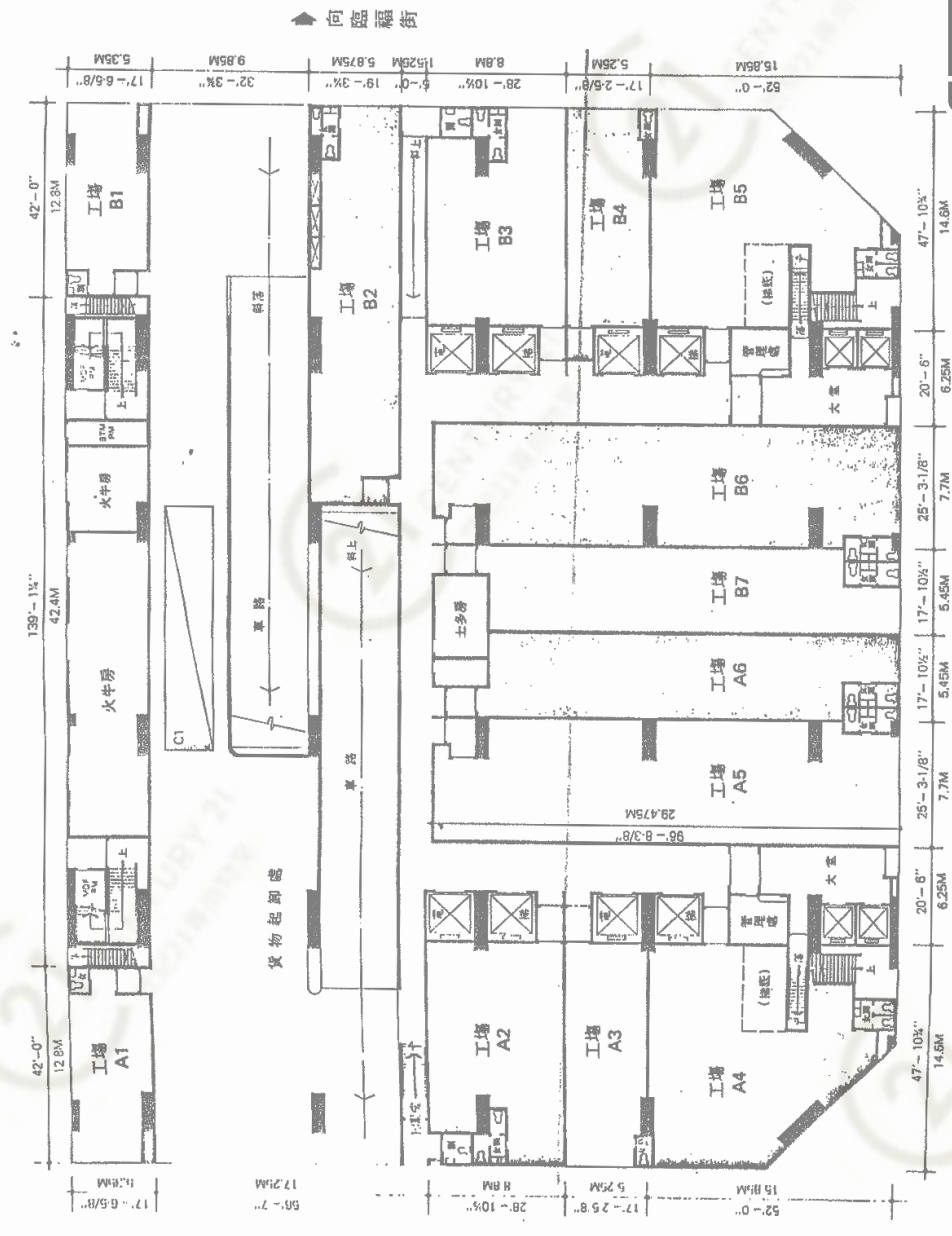
圖中所有數據比例，一概只作參考之用

# 平面圖

# Floor Plan



樓底高度：25呎1吋  
每平方呎負重力：500磅



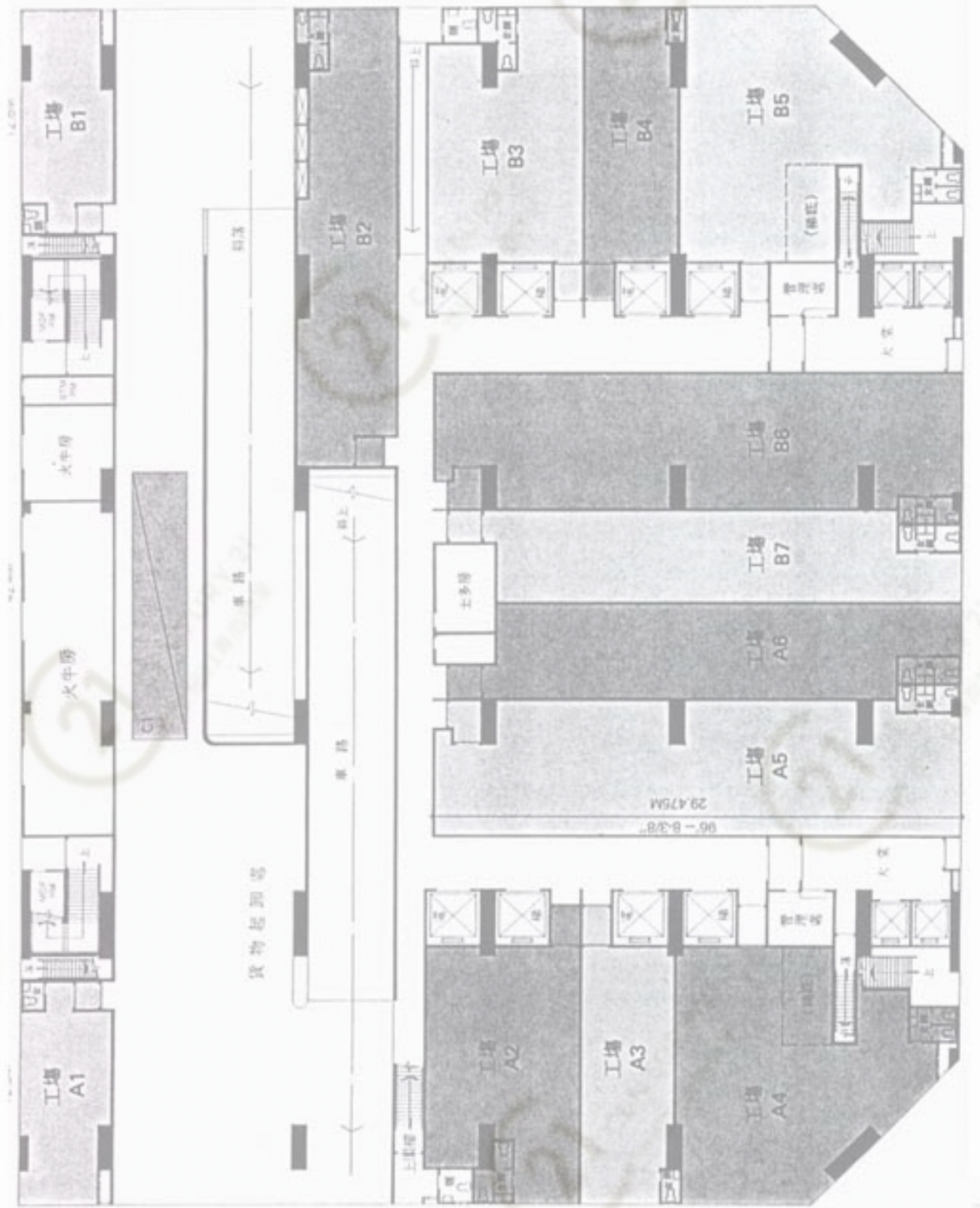
地下平面圖  
Ground Floor Plan

## 合力工業中心A座 Hoplite Industrial Centre Block A

NOT TO SCALE, FOR IDENTIFICATION PURPOSE ONLY  
圖中所有數據比例，一概只作參考之用

# 平面圖

# Floor Plan



G/F

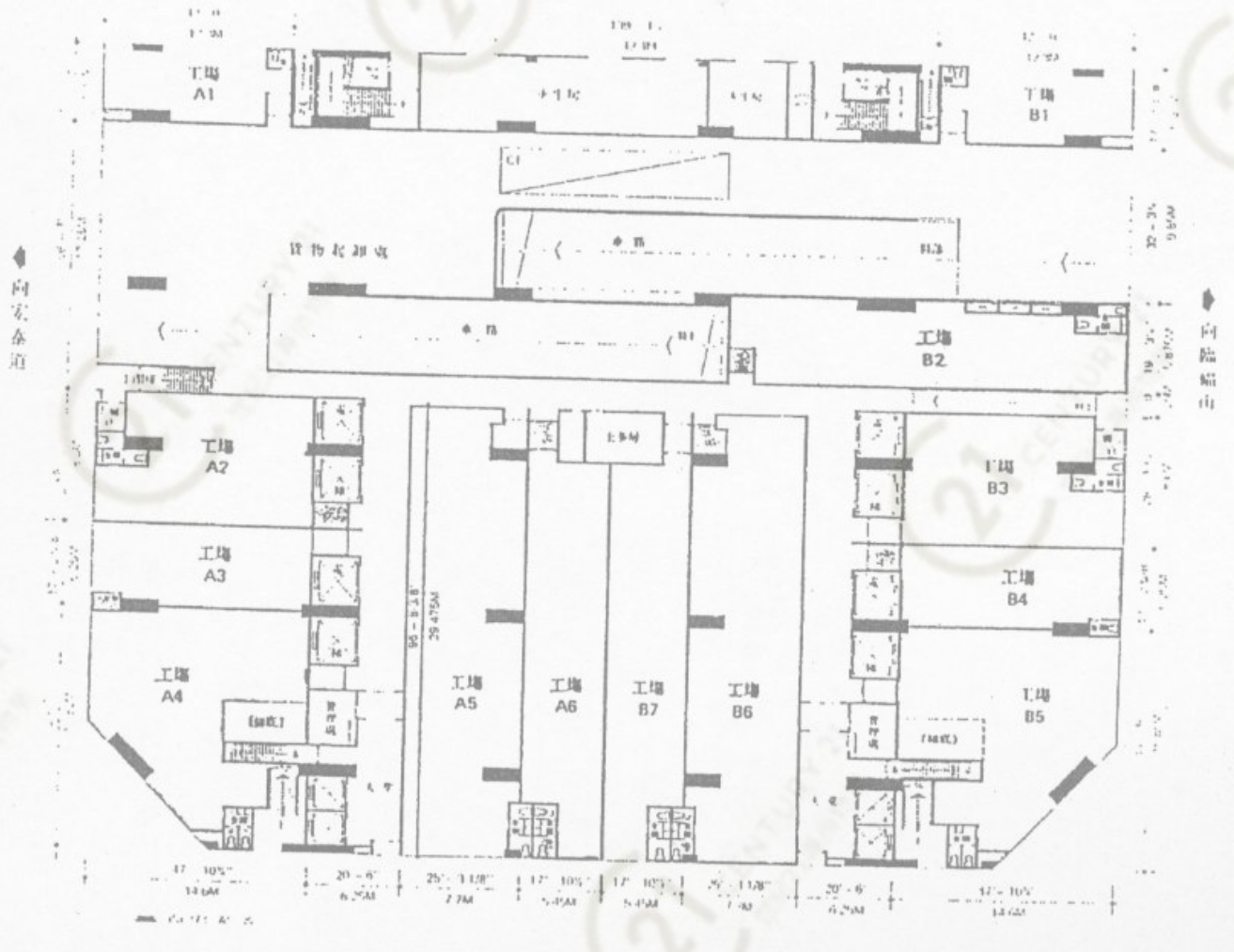
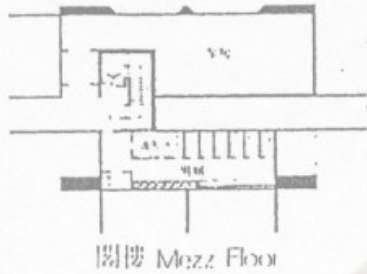
合力工業中心A座 Hoplite Industrial Centre Block A

NOT TO SCALE, FOR IDENTIFICATION PURPOSE ONLY  
圖中所有數據比例，一概只作參考之用





地下平面圖  
Ground Floor Plan



合力工業中心A座 Hoplite Industrial Centre Block A

NOT TO SCALE, FOR IDENTIFICATION PURPOSE ONLY

圖中所有數據比例，一概只作參考之用