

# 平面圖

# Floor Plan



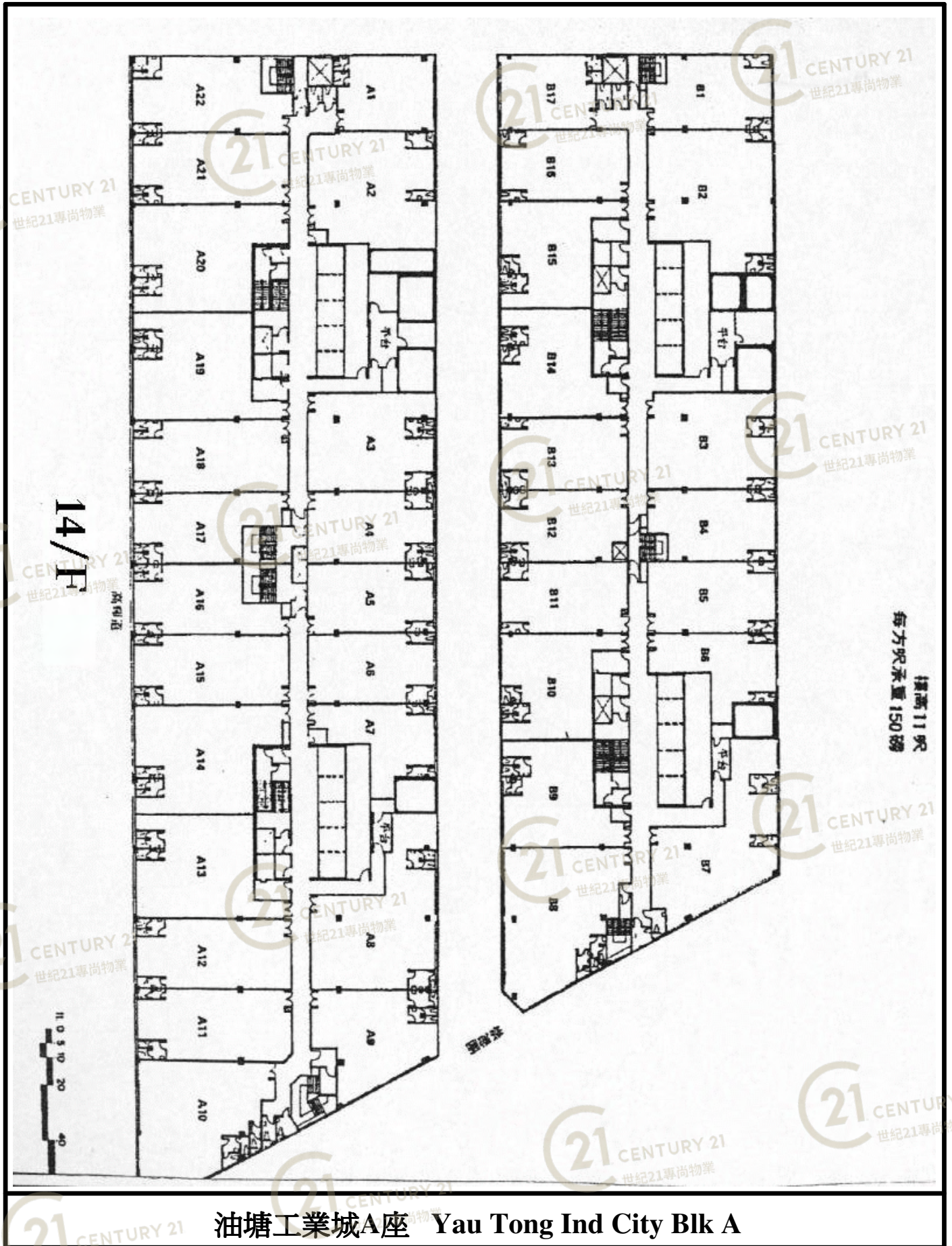
油塘工業城A座 Yau Tong Ind City Blk A

NOT TO SCALE, FOR IDENTIFICATION PURPOSE ONLY

圖中所有數據比例，一概只作參考之用

# 平面圖

# Floor Plan



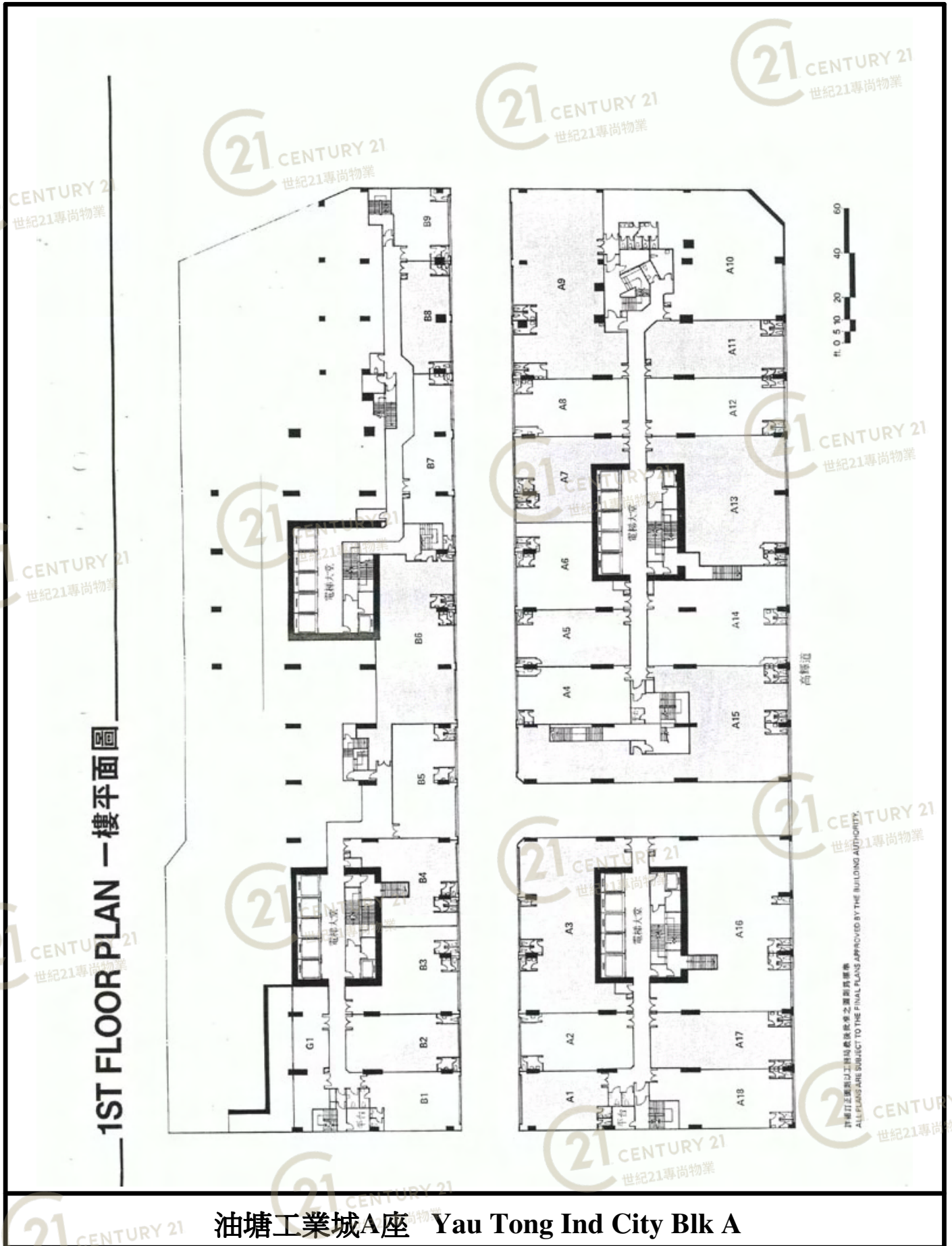
油塘工業城A座 Yau Tong Ind City Blk A

NOT TO SCALE, FOR IDENTIFICATION PURPOSE ONLY

圖中所有數據比例，一概只作參考之用

# 平面圖

# Floor Plan



—1ST FLOOR PLAN—樓平面圖

油塘工業城A座 Yau Tong Ind City Blk A

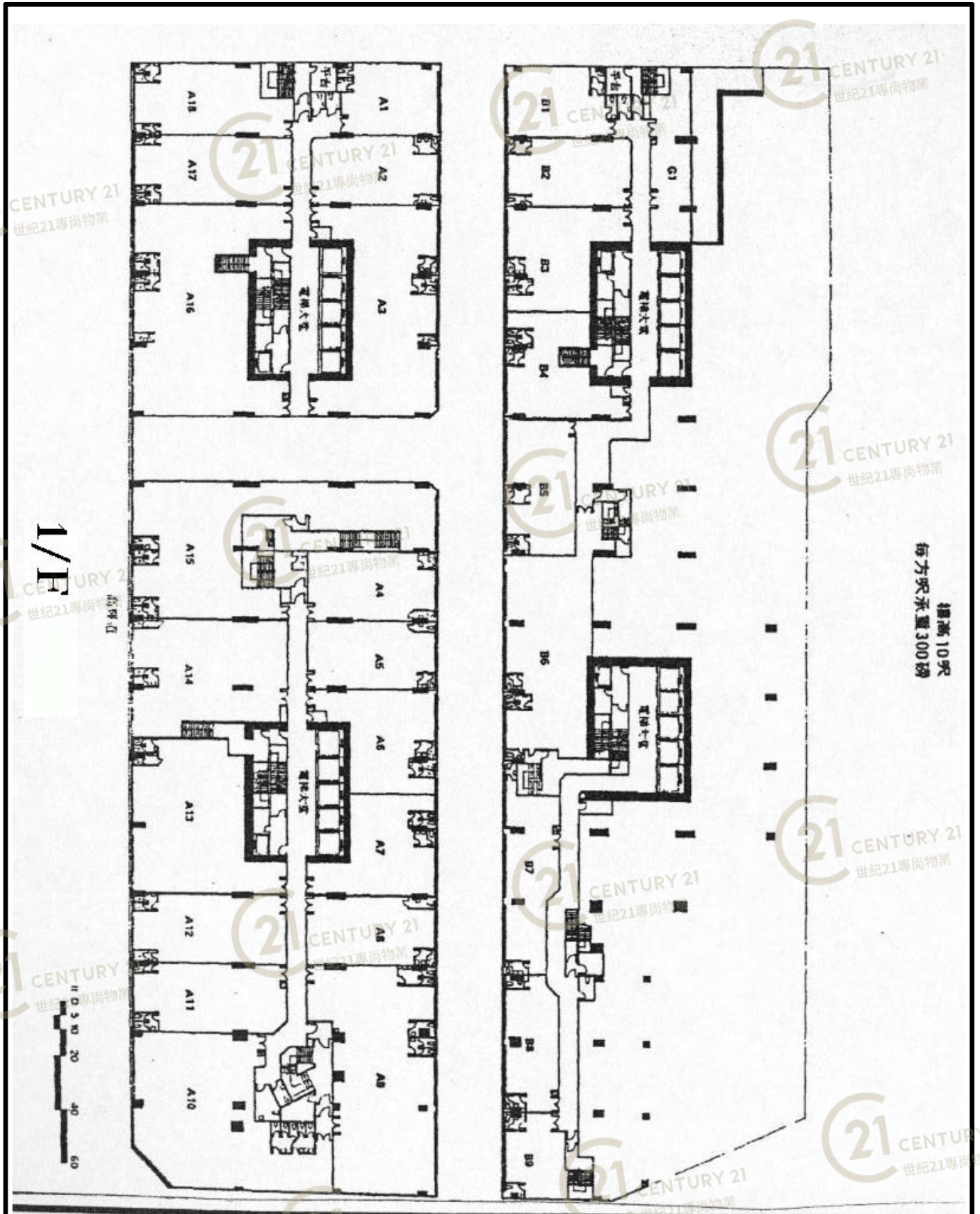
NOT TO SCALE, FOR IDENTIFICATION PURPOSE ONLY

圖中所有數據比例，一概只作參考之用

此圖乃由圖則工程師根據標準之圖則所編繪  
ALL PLANS ARE SUBJECT TO THE FINAL PLANS APPROVED BY THE BUILDING AUTHORITY.

# 平面圖

# Floor Plan



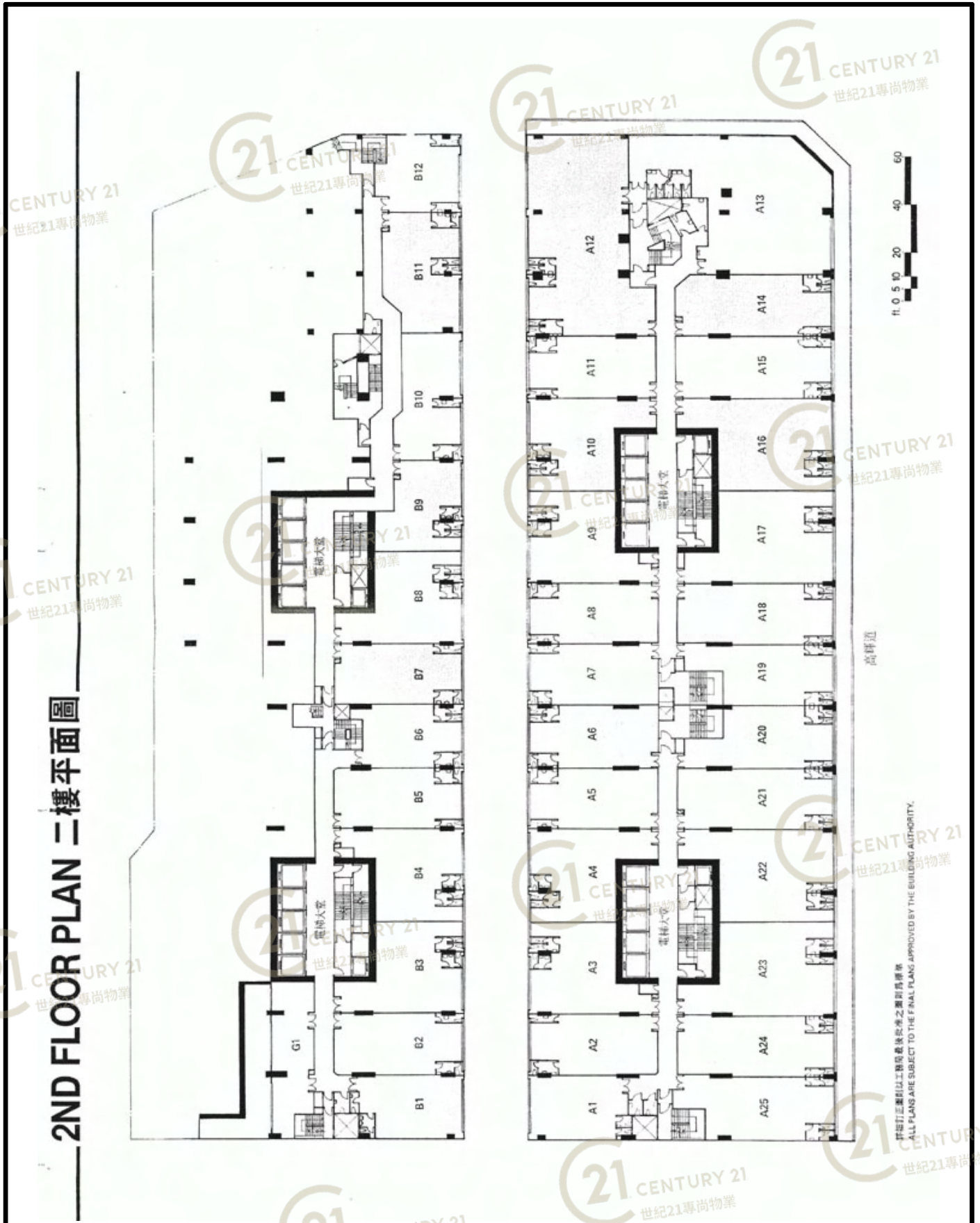
油塘工業城A座 Yau Tong Ind City Blk A

NOT TO SCALE, FOR IDENTIFICATION PURPOSE ONLY

圖中所有數據比例，一概只作參考之用

# 平面圖

# Floor Plan



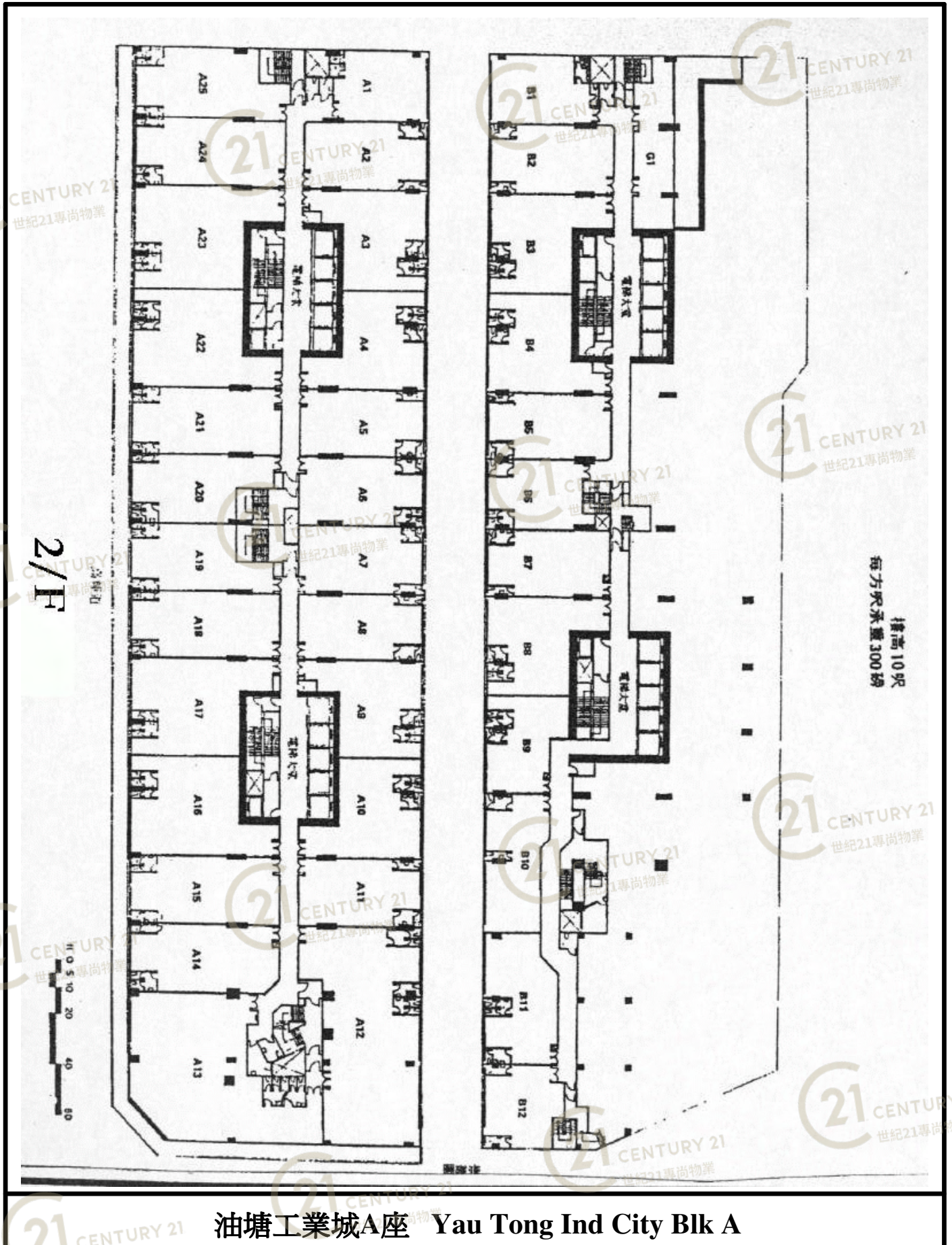
2ND FLOOR PLAN 二樓平面圖

油塘工業城A座 Yau Tong Ind City Blk A

NOT TO SCALE, FOR IDENTIFICATION PURPOSE ONLY  
圖中所有數據比例，一概只作參考之用

# 平面圖

# Floor Plan

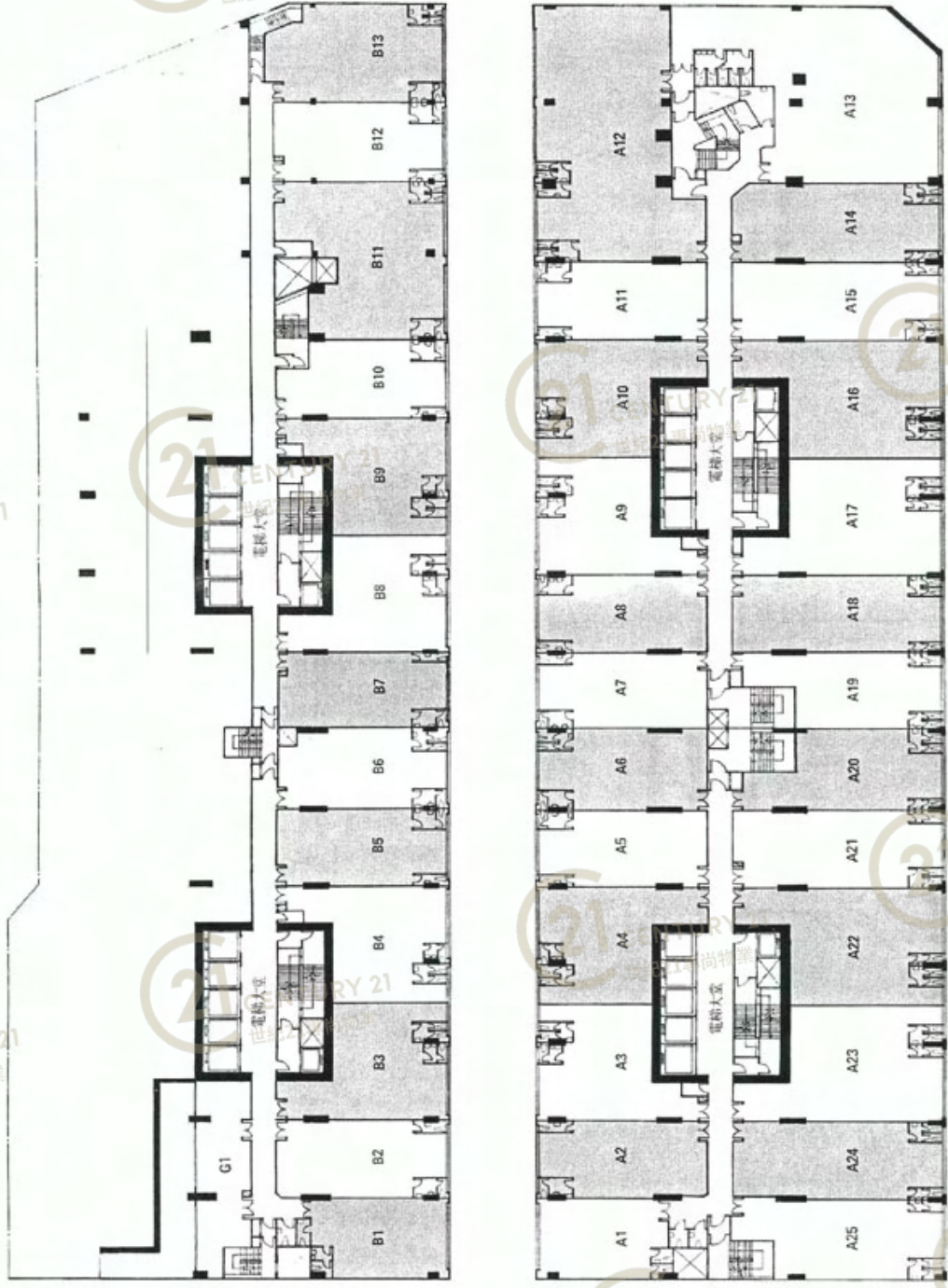


油塘工業城A座 Yau Tong Ind City Blk A

NOT TO SCALE, FOR IDENTIFICATION PURPOSE ONLY

圖中所有數據比例，一概只作參考之用

3RD FLOOR PLAN 三樓平面圖



油塘工業城A座 Yau Tong Ind City Blk A

NOT TO SCALE, FOR IDENTIFICATION PURPOSE ONLY  
圖中所有數據比例，一概只作參考之用

此圖乃正原圖1:1比例縮小後之圖則為參考  
ALL PLANS ARE SUBJECT TO THE FINAL PLANS APPROVED BY THE BUILDING AUTHORITY.

# 平面圖

# Floor Plan



油塘工業城A座 Yau Tong Ind City Blk A

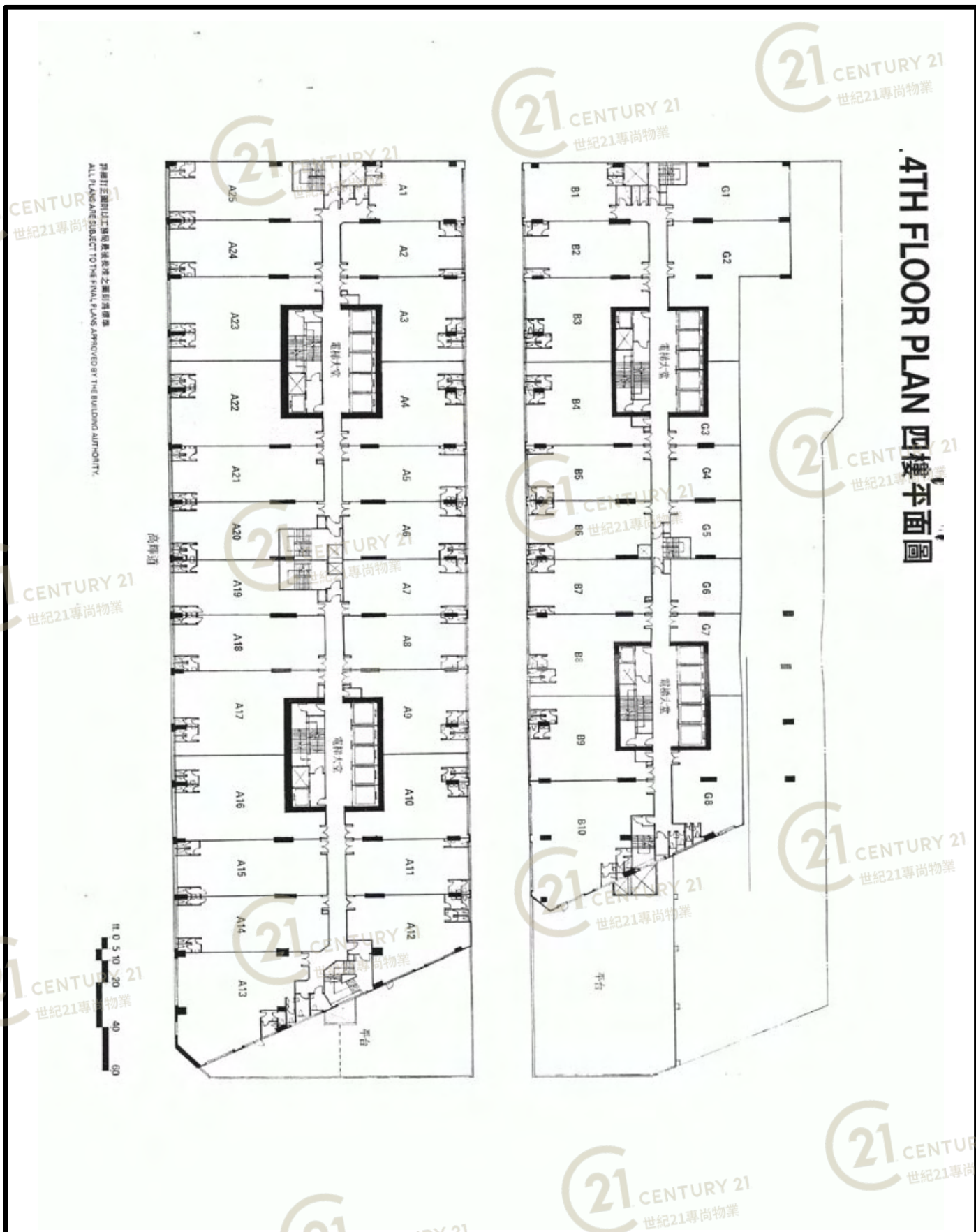
NOT TO SCALE, FOR IDENTIFICATION PURPOSE ONLY

圖中所有數據比例，一概只作參考之用



# 平面圖

# Floor Plan

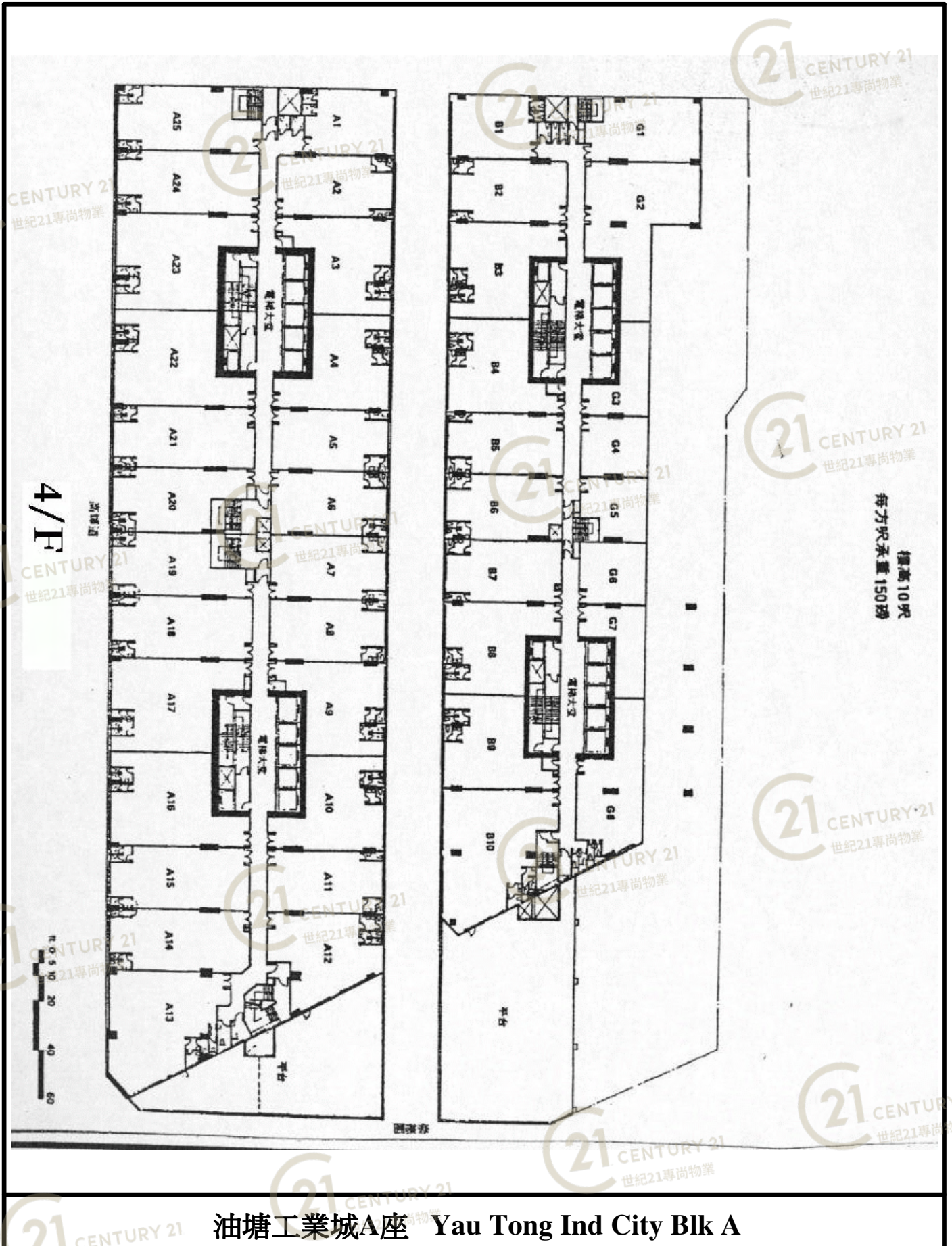


油塘工業城A座 Yau Tong Ind City Blk A

NOT TO SCALE, FOR IDENTIFICATION PURPOSE ONLY  
圖中所有數據比例，一概只作參考之用

# 平面圖

# Floor Plan



NOT TO SCALE, FOR IDENTIFICATION PURPOSE ONLY

圖中所有數據比例，一概只作參考之用

# 平面圖

# Floor Plan



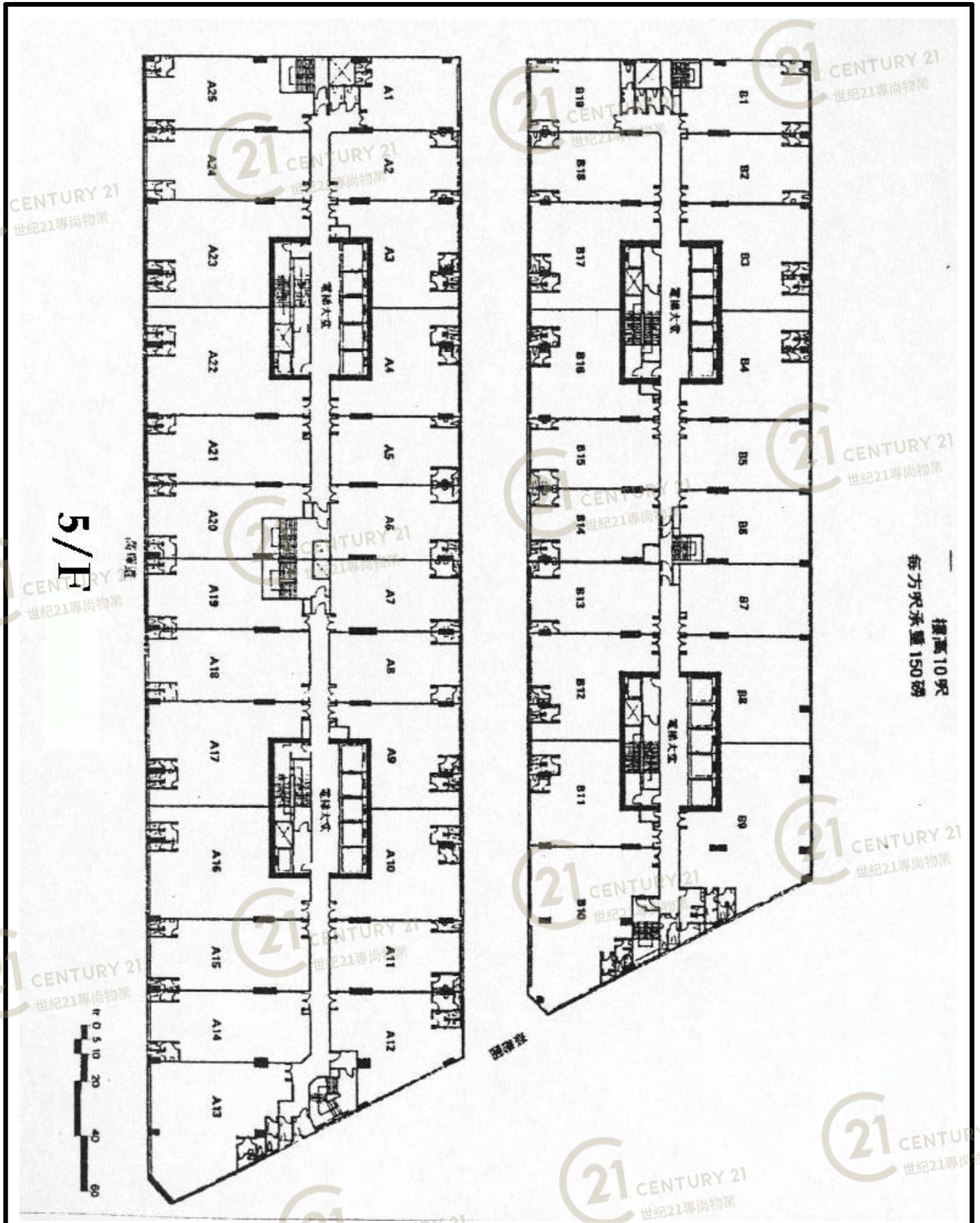
油塘工業城A座 Yau Tong Ind City Blk A

NOT TO SCALE, FOR IDENTIFICATION PURPOSE ONLY

圖中所有數據比例，一概只作參考之用

# 平面圖

# Floor Plan



油塘工業城A座 Yau Tong Ind City Blk A

NOT TO SCALE, FOR IDENTIFICATION PURPOSE ONLY

圖中所有數據比例，一概只作參考之用

# 平面圖

# Floor Plan



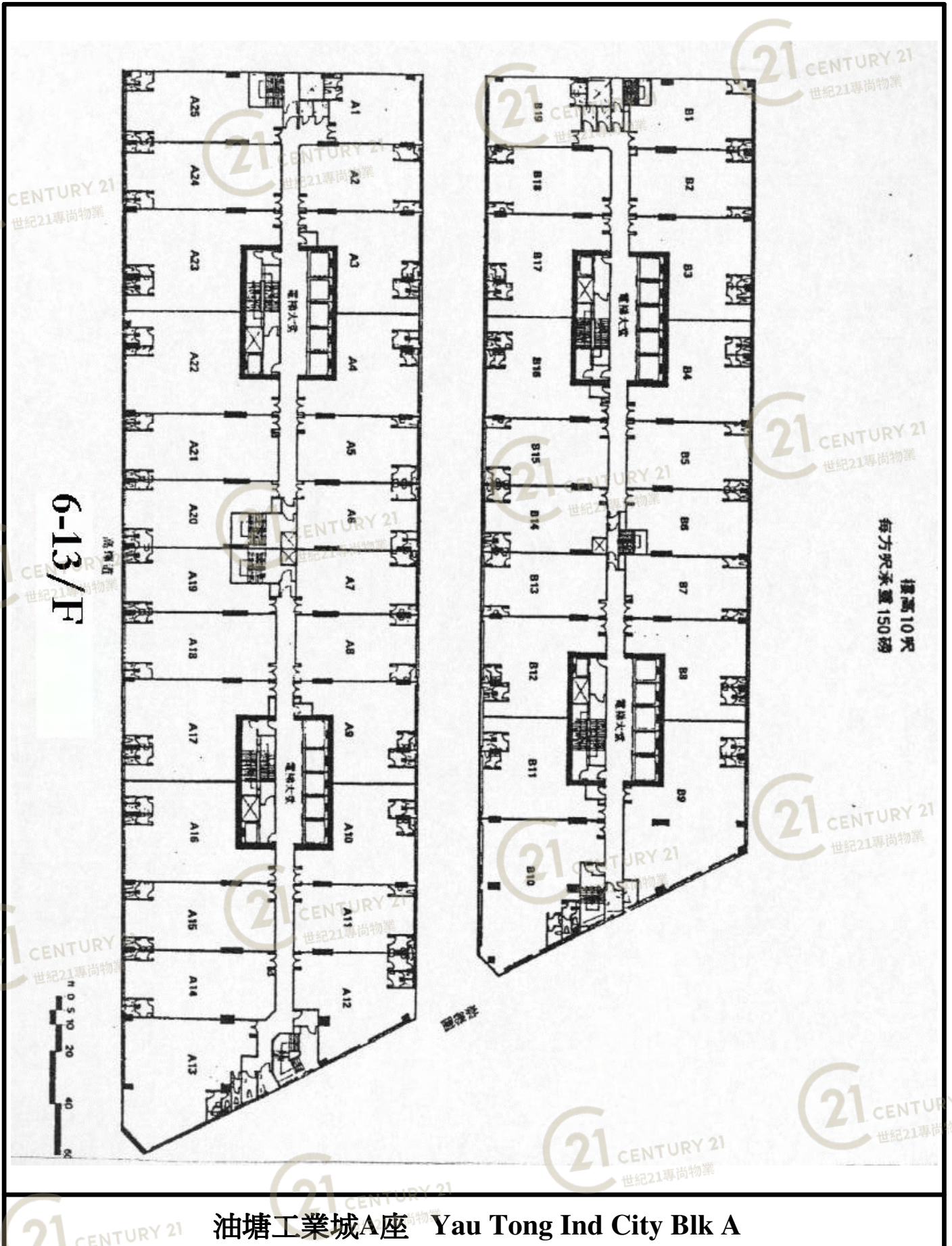
6TH-13TH FLOOR PLAN 六至十三樓平面圖

油塘工業城A座 Yau Tong Ind City Blk A

NOT TO SCALE, FOR IDENTIFICATION PURPOSE ONLY  
圖中所有數據比例，一概只作參考之用

# 平面圖

# Floor Plan



NOT TO SCALE, FOR IDENTIFICATION PURPOSE ONLY

圖中所有數據比例，一概只作參考之用

# 平面圖

# Floor Plan

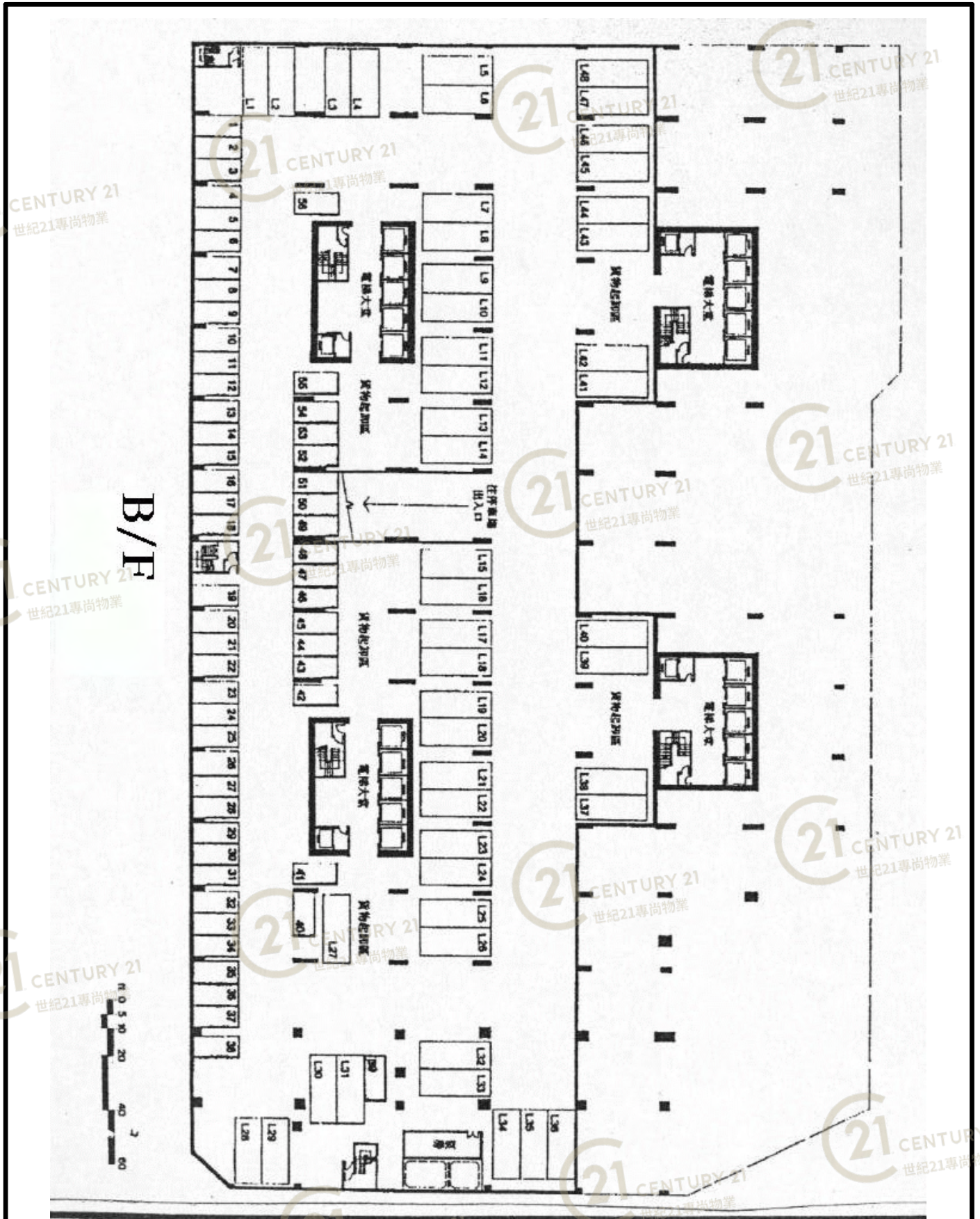


油塘工業城A座 Yau Tong Ind City Blk A

NOT TO SCALE, FOR IDENTIFICATION PURPOSE ONLY  
圖中所有數據比例，一概只作參考之用

# 平面圖

# Floor Plan



B/F

油塘工業城A座 Yau Tong Ind City Blk A

NOT TO SCALE, FOR IDENTIFICATION PURPOSE ONLY

圖中所有數據比例，一概只作參考之用



# 平面圖

# Floor Plan



油塘工業城A座 Yau Tong Ind City Blk A

NOT TO SCALE, FOR IDENTIFICATION PURPOSE ONLY

圖中所有數據比例，一概只作參考之用

# 平面圖

# Floor Plan



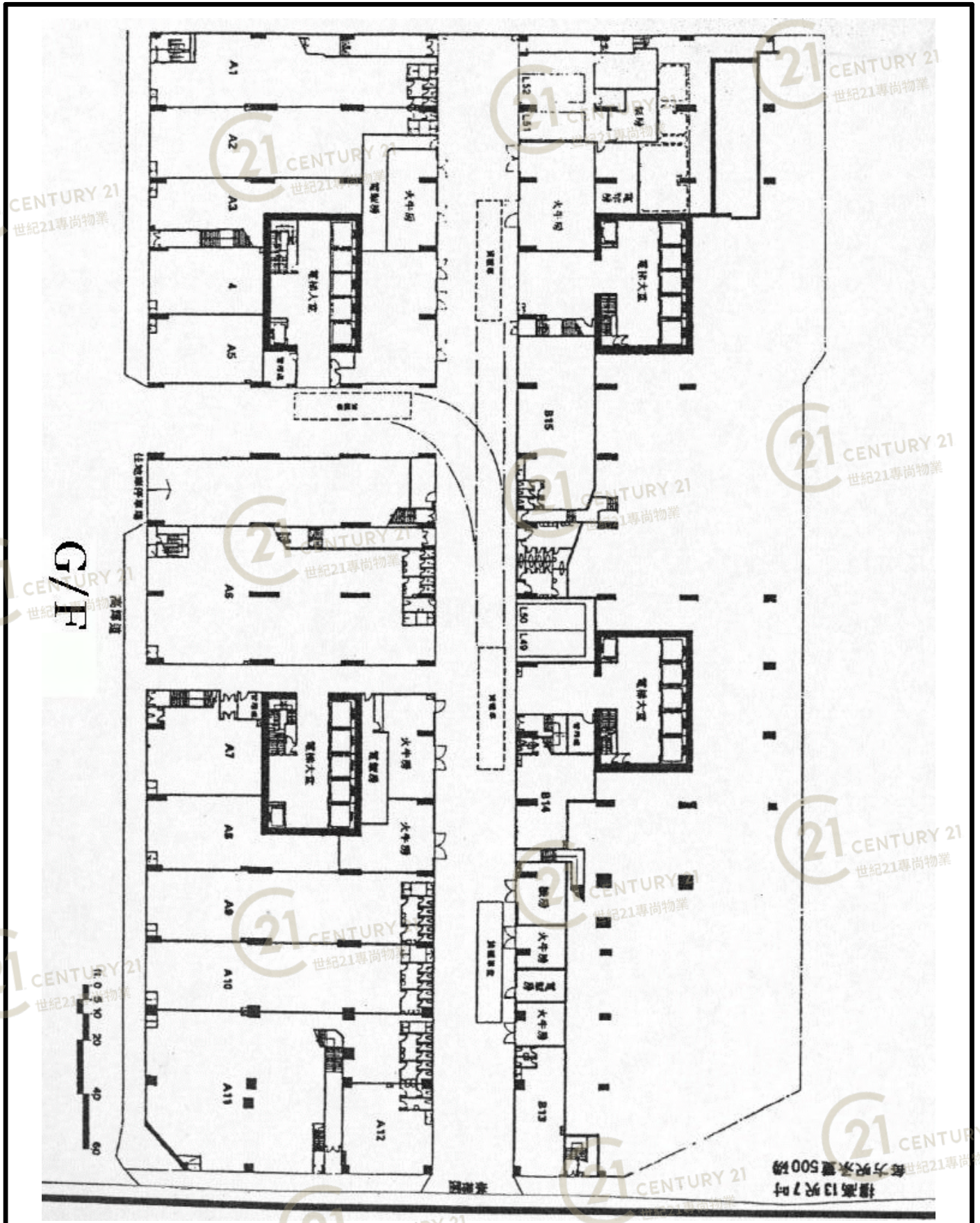
GROUND FLOOR PLAN 地下平面圖

油塘工業城A座 Yau Tong Ind City Blk A

NOT TO SCALE, FOR IDENTIFICATION PURPOSE ONLY  
圖中所有數據比例，一概只作參考之用

# 平面圖

# Floor Plan



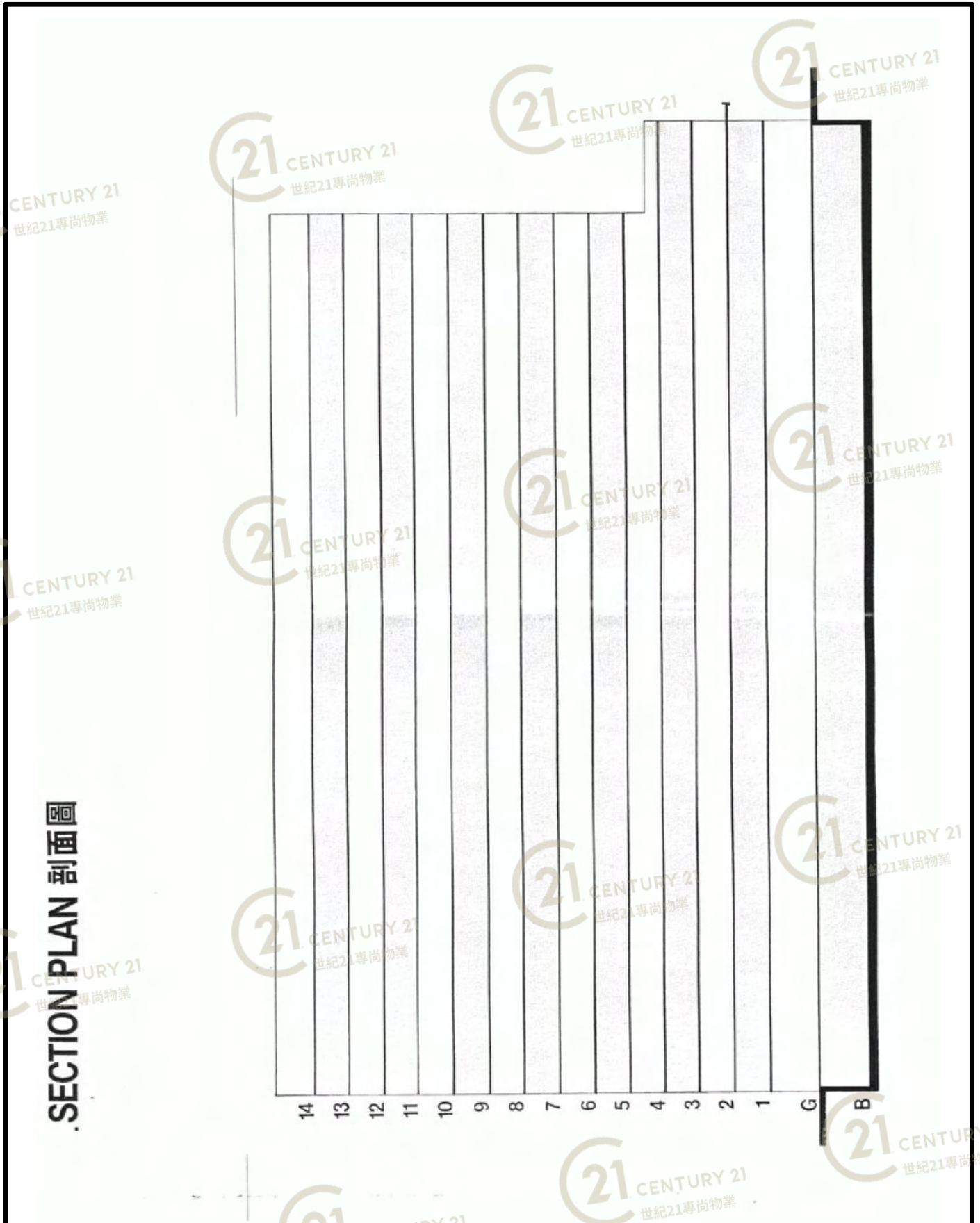
油塘工業城A座 Yau Tong Ind City Blk A

NOT TO SCALE, FOR IDENTIFICATION PURPOSE ONLY

圖中所有數據比例，一概只作參考之用

# 平面圖

# Floor Plan



SECTION PLAN 剖面圖

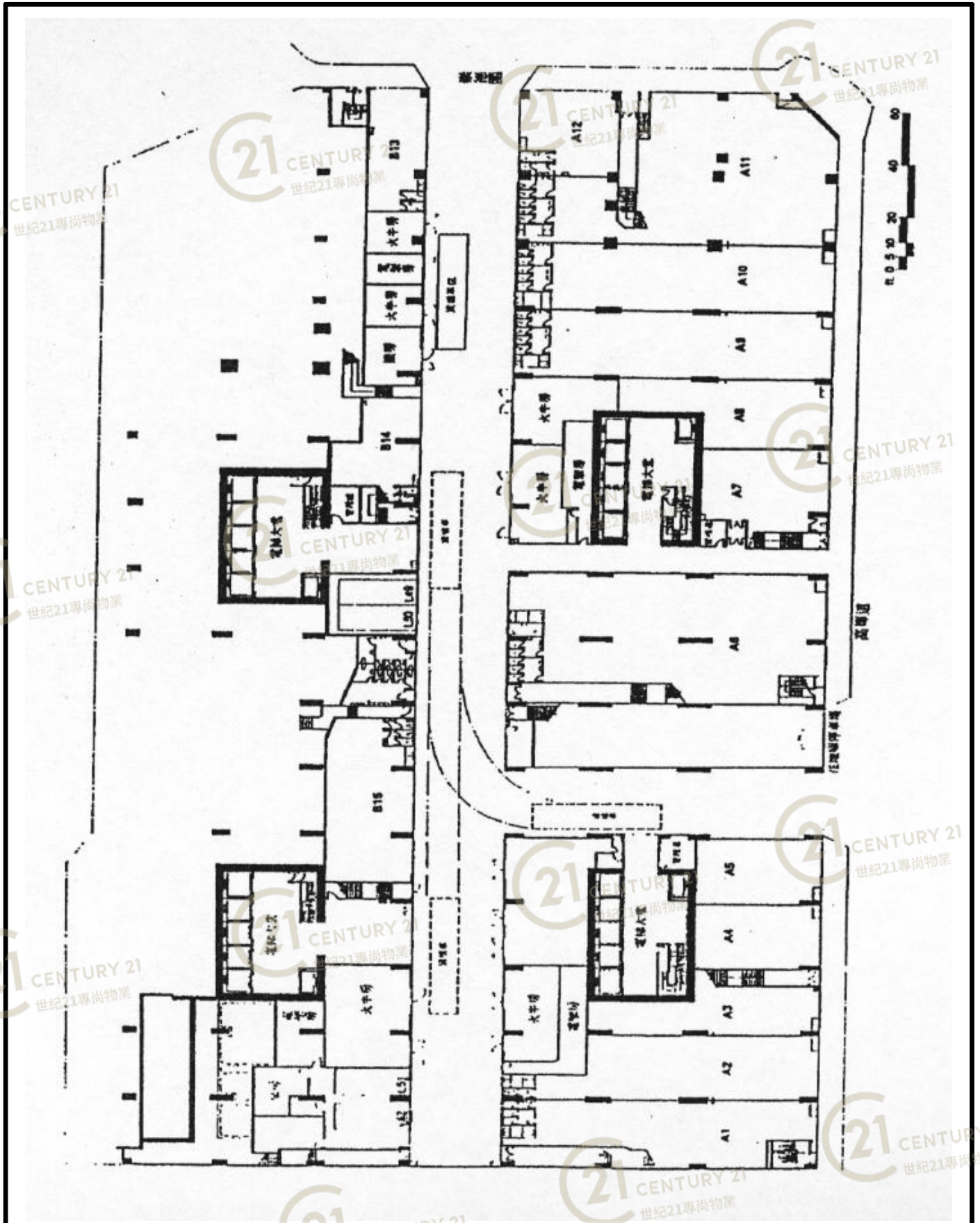
油塘工業城A座 Yau Tong Ind City Blk A

NOT TO SCALE, FOR IDENTIFICATION PURPOSE ONLY

圖中所有數據比例，一概只作參考之用

# 平面圖

# Floor Plan



油塘工業城A座 Yau Tong Ind City Blk A

NOT TO SCALE, FOR IDENTIFICATION PURPOSE ONLY

圖中所有數據比例，一概只作參考之用

# 平面圖

# Floor Plan

## YAU TONG INDUSTRIAL CITY (油塘工業城) 17 Ko Fai Road, Yau Tong, Kowloon

INDUSTRIAL					Remarks
Floor 樓層	Unit 單位	M.F.A. (s.f.) 建築面積	Monthly Rental 月租	P.S.F. 呎租	
Block A					
				\$5.00	
Sub-Total		0			

INDUSTRIAL					Remarks
Floor 樓層	Unit 單位	M.F.A. (s.f.) 建築面積	Monthly Rental 月租	P.S.F. 呎租	
Block B					
				\$5.00	
Sub-Total		0			

**Total** 0

G/F	A1	3,053	\$54,954	\$18.00	Expire on 16/6/08-->25/10/08
7/F	A12	1,873	\$9,365	\$5.00	Expire on 19/9/08
7/F	A23	2,545	\$12,725	\$5.00	Expire on 22/4/08-->20/10/08
12/F	B16	1,903	\$9,515	\$5.00	Expire on 8/5/08-->8/8/08
13/F	A6	1,604	\$8,020	\$5.00	Licence expire on 2/7/08
14/F	B13 & B14	3,464	\$17,320	\$5.00	Expire on 6/6/08(repossess on 15/6/08)
4/F	BG8	1,893	LEASED		Terminate on 6/6/08(repossess on 15/6/08)
10/F	B16	1,903	LEASED		Terminate on 6/6/08(repossess on 15/6/08)
13/F	A6	1,604	LEASED		Expire on 2/6/08

**Under Negotiation**  
**Under Offer**

### Other Information:

Landlord : Real Maker Development Limited  
 Lease Term : 2 Years  
 Stamp Duty : Borne by both parties in equal shares  
 Management Fee (p.m.): Typical Floor : approx. @0.89psf  
 Ground Floor : approx. @0.62psf  
 Cleaning Charges (p.m.): **Typical Floor : approx.\$0.92 p.s.f. & Ground Floor : approx.\$0.64 p.s.f.(Effective from 1/2/08)**  
 HK\$0.40p.s.f. (1,000 sq.ft. or below) OR Minimum HK\$300, Whichever is the higher  
 HK\$0.35p.s.f. (1,001 sq.ft. to 5,000 sq.ft.) OR Minimum HK\$400, Whichever is the higher  
 HK\$0.30p.s.f. (5,001 sq.ft. or above) OR Minimum HK\$1750, Whichever is the higher  
 Deposit : 3 Months' Rental, Mgmt. Fee, Rates, Gov't Rent & Cleaning Charges  
 Person In Charge : Mr. W. H. Ng (Tel 3176 8308)/ Mr. Alan Leung (Tel 3176 8305)/ Ms. Cathy Chan (Tel 31768307)  
 Tenancy Agreement : To be prepared by Mr. Raymond Law (Tel : 2132 8345)/Ms. Eva Chau (Tel : 2132 8594)  
 Management Office : Mr. James Wong/Mr. Edmond Law /Mr. Chow(Tel: 2727 2016)

\*\*All prices are subject to change without prior notice\*



## 油塘工業城A座 Yau Tong Ind City Blk A

**NOT TO SCALE, FOR IDENTIFICATION PURPOSE ONLY**

圖中所有數據比例，一概只作參考之用

# 外觀圖

# Building Outlook



油塘工業城A座 Yau Tong Ind City Blk A

NOT TO SCALE, FOR IDENTIFICATION PURPOSE ONLY

圖中所有數據比例，一概只作參考之用

# 外觀圖

# Building Outlook



油塘工業城A座 Yau Tong Ind City Blk A

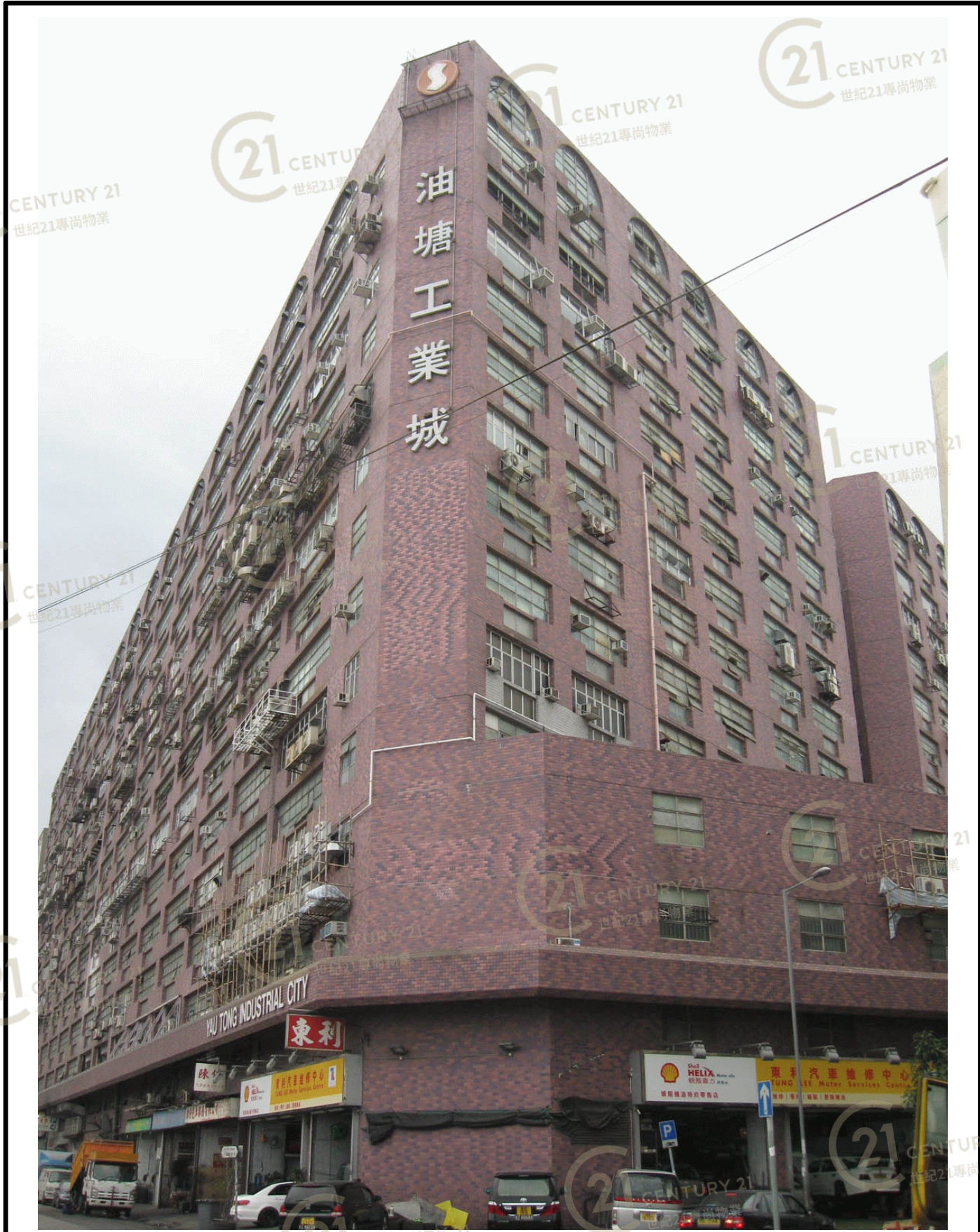
NOT TO SCALE, FOR IDENTIFICATION PURPOSE ONLY

圖中所有數據比例，一概只作參考之用



# 外觀圖

# Building Outlook



油塘工業城A座 Yau Tong Ind City Blk A

NOT TO SCALE, FOR IDENTIFICATION PURPOSE ONLY

圖中所有數據比例，一概只作參考之用