

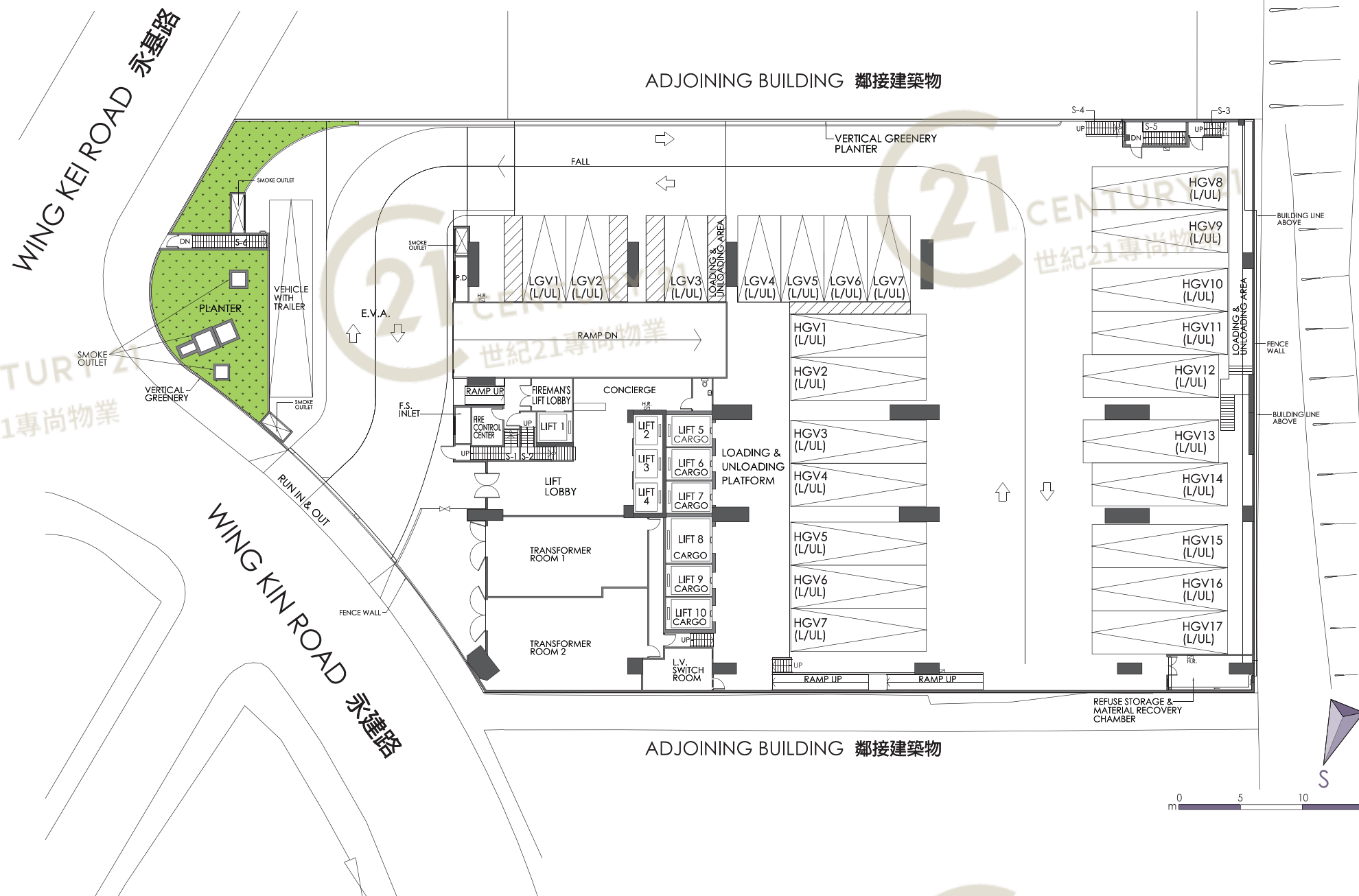
BASEMENT FLOOR PLAN (地庫樓面平面圖)



Excluding 4/F, 13/F and 14/F 不設4, 13及14樓
 The internal areas of units on upper floors are in general slightly larger than lower floors due to possible reduced thickness of structural walls on those floors.
 層數較高單位由於結構牆較低層單位稍薄，因而室內空間或會稍為增多。
 All given information on this brochure is for reference only and the plan is subject to final Government approved plans and documentation.
 本售樓書所提供的資料僅供參考，一切內容均以政府最後批准圖則及法律文件為準。



GROUND FLOOR PLAN (地下樓面平面圖)



21 CENTURY 21
世紀21專尚物業

TSUEN WAN ROAD 荃灣路



Excluding 4/F, 13/F and 14/F 不設4、13及14樓
 The internal areas of units on upper floors are in general slightly larger than lower floors due to possible reduced thickness of structural walls on those floors.
 層數較高單位由於結構牆較低層單位稍薄，因而室內空間或會稍為增多。
 All given information on this brochure is for reference only and the plan is subject to final Government approved plans and documentation.
 本售樓書所提供的資料僅供參考，一切內容均以政府最後批准圖則及法律文件為準。

21 CENTURY 21
世紀21專尚物業

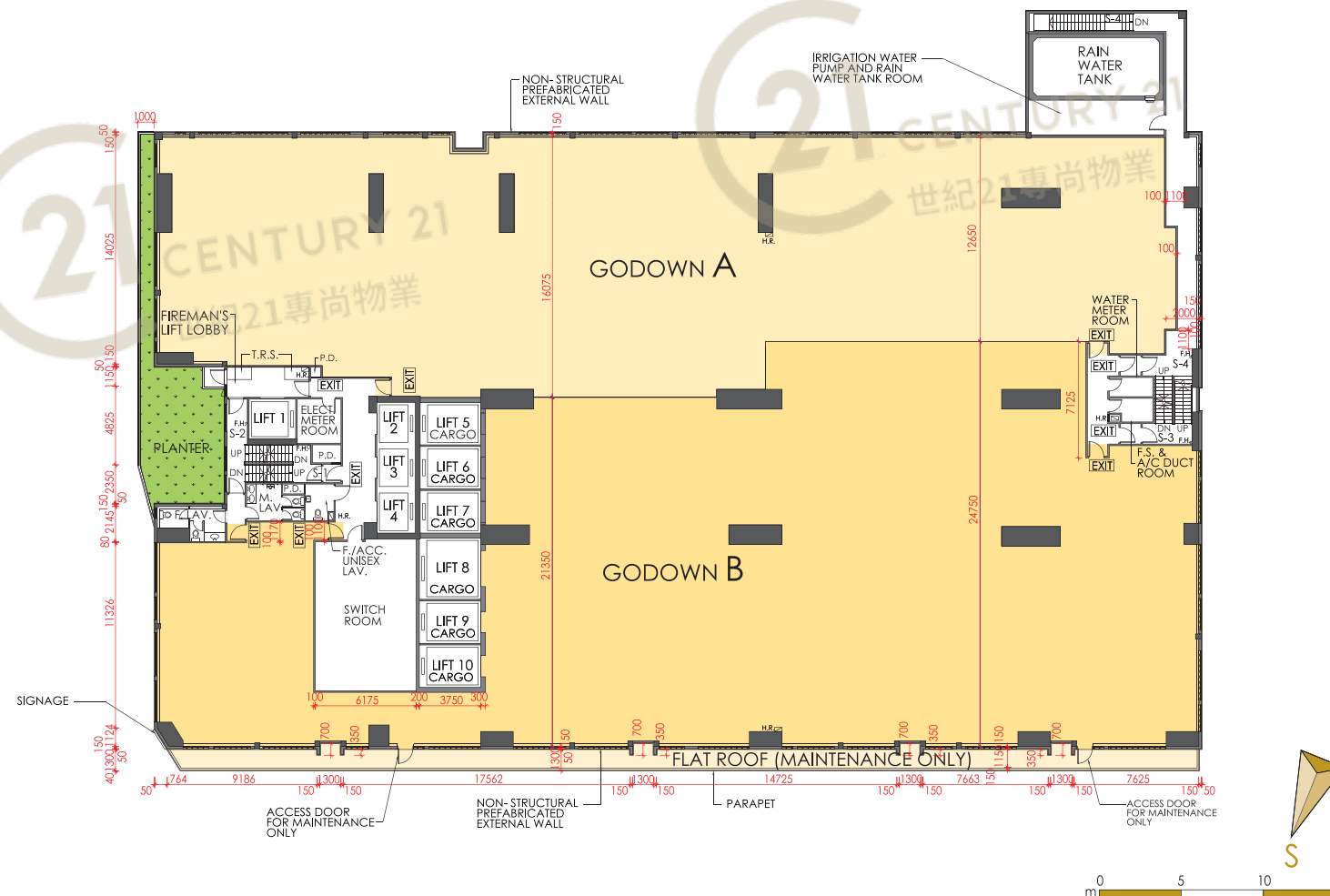
21 CENTURY 21
世紀21專尚物業

21 CENTURY 21
世紀21專尚物業

21 CENTURY 21
世紀21專尚物業

21 CENTURY 21
世紀21專尚物業

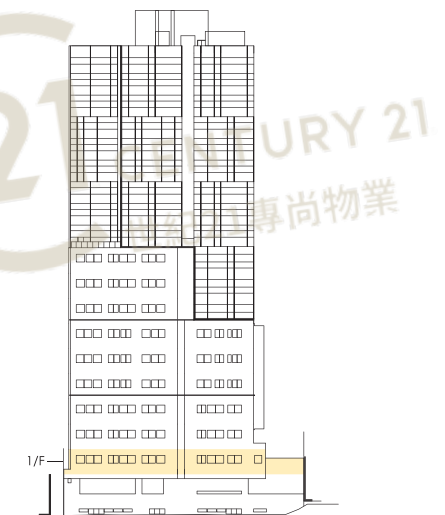
1st FLOOR PLAN (1樓樓面平面圖)



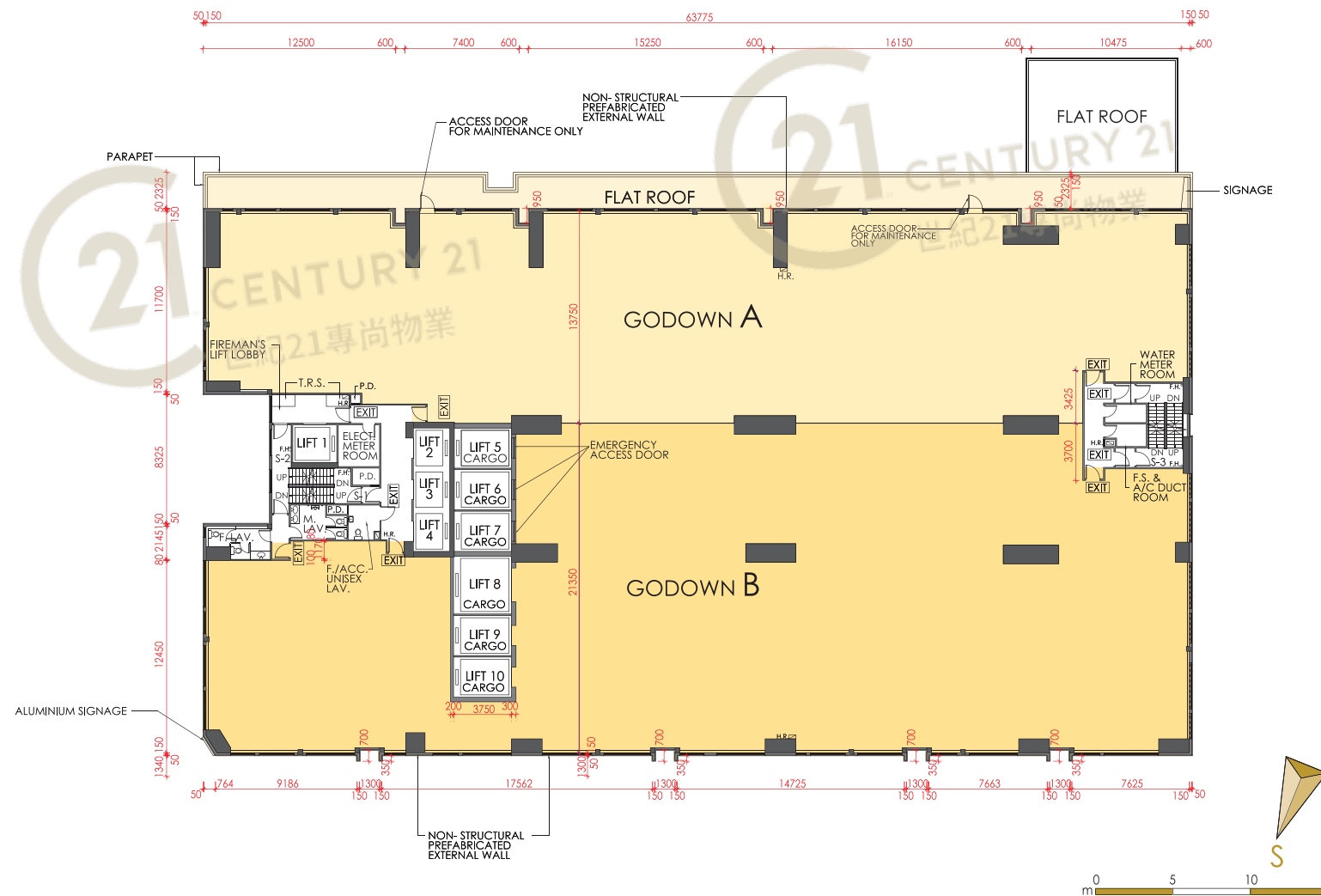
1st Floor Area Schedule

| GODOWN AREA (sq.ft) | GODOWN A | GODOWN B |
|----------------------------------|----------|----------|
| Gross Floor Area | 12,825 | 16,516 |
| Saleable Area | 9,747 | 12,552 |
| Unit Covered Area | 9,747 | 12,552 |
| Apportioned Share Of Common Area | 3,078 | 3,964 |
| Flat Roof | | 786 |

Excluding 4/F, 13/F and 14/F 不設4、13及14樓
 The internal areas of units on upper floors are in general slightly larger than lower floors due to possible reduced thickness of structural walls on those floors.
 層數較高單位由於結構牆較低層單位稍薄，因而室內空間或會稍為增多。
 All given information on this brochure is for reference only and the plan is subject to final Government approved plans and documentation.
 本售樓書所提供的資料僅供參考，一切內容均以政府最後批准圖則及法律文件為準。



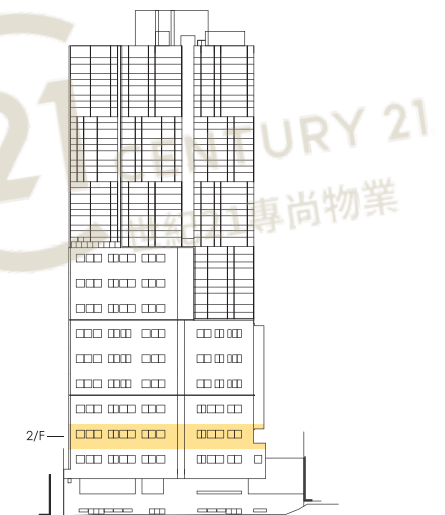
2nd FLOOR PLAN (2樓樓面平面圖)



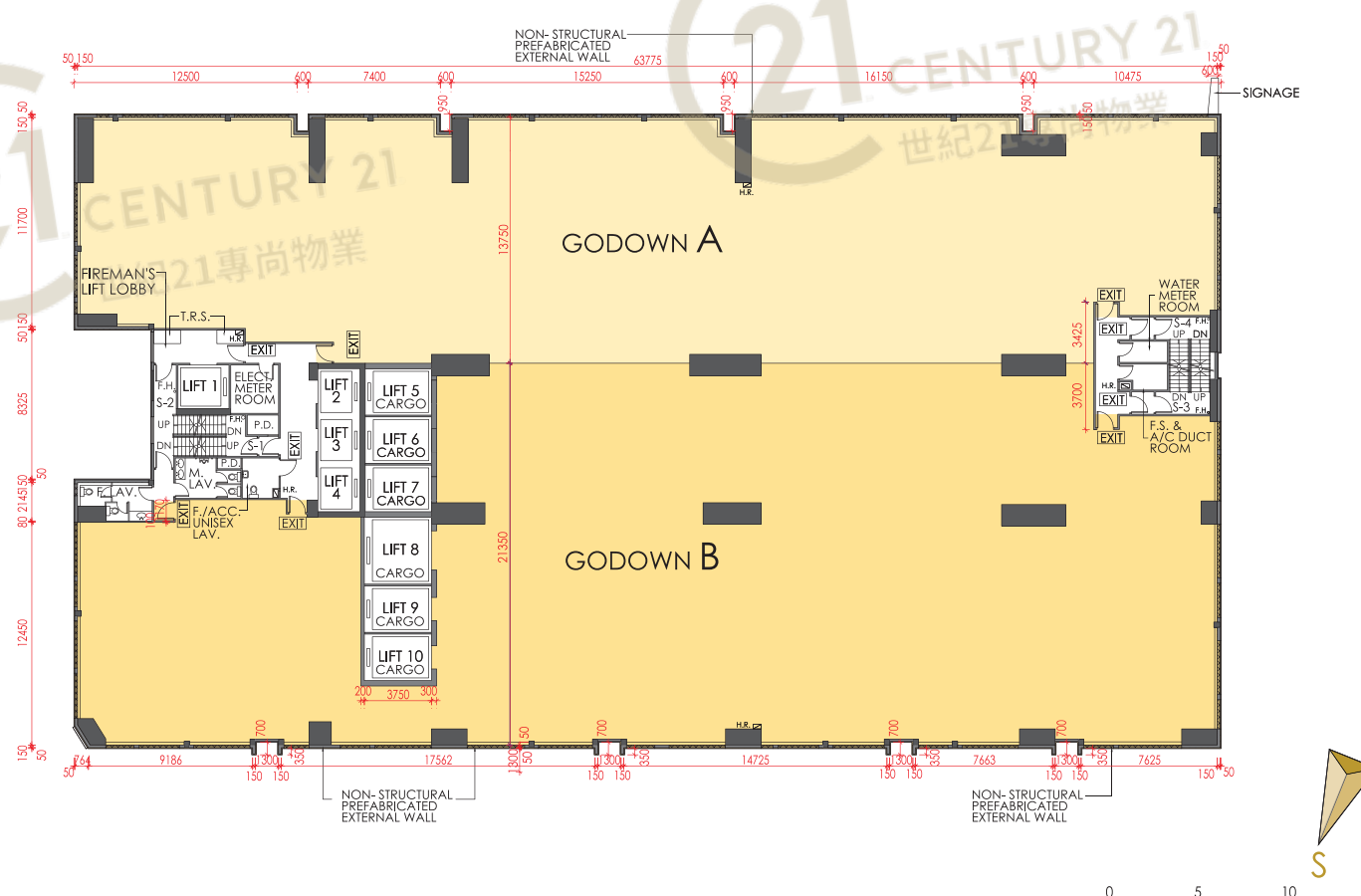
2nd Floor Area Schedule

| GODOWN AREA (sq.ft) | GODOWN A | GODOWN B |
|----------------------------------|----------|----------|
| Gross Floor Area | 12,025 | 16,432 |
| Saleable Area | 9,139 | 12,488 |
| Unit Covered Area | 9,139 | 12,488 |
| Apportioned Share Of Common Area | 2,886 | 3,944 |
| Flat Roof | 1,387 | |

Excluding 4/F, 13/F and 14/F 不設 4、13 及 14 樓
 The internal areas of units on upper floors are in general slightly larger than lower floors due to possible reduced thickness of structural walls on those floors.
 層數較高單位由於結構牆較低層單位稍薄，因而室內空間或會稍為增多。
 All given information on this brochure is for reference only and the plan is subject to final Government approved plans and documentation.
 本售樓書所提供的資料僅供參考，一切內容均以政府最後批准圖則及法律文件為準。



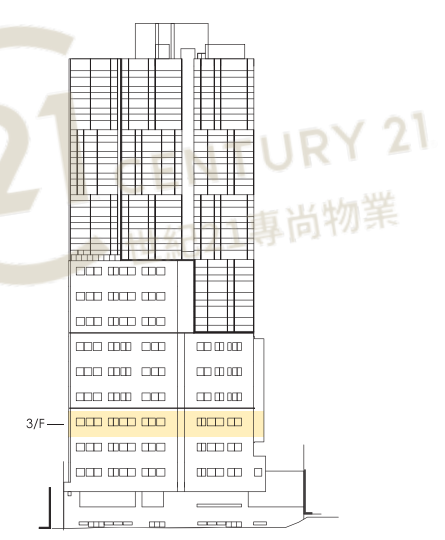
3rd FLOOR PLAN (3樓樓面平面圖)



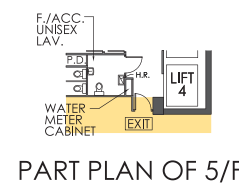
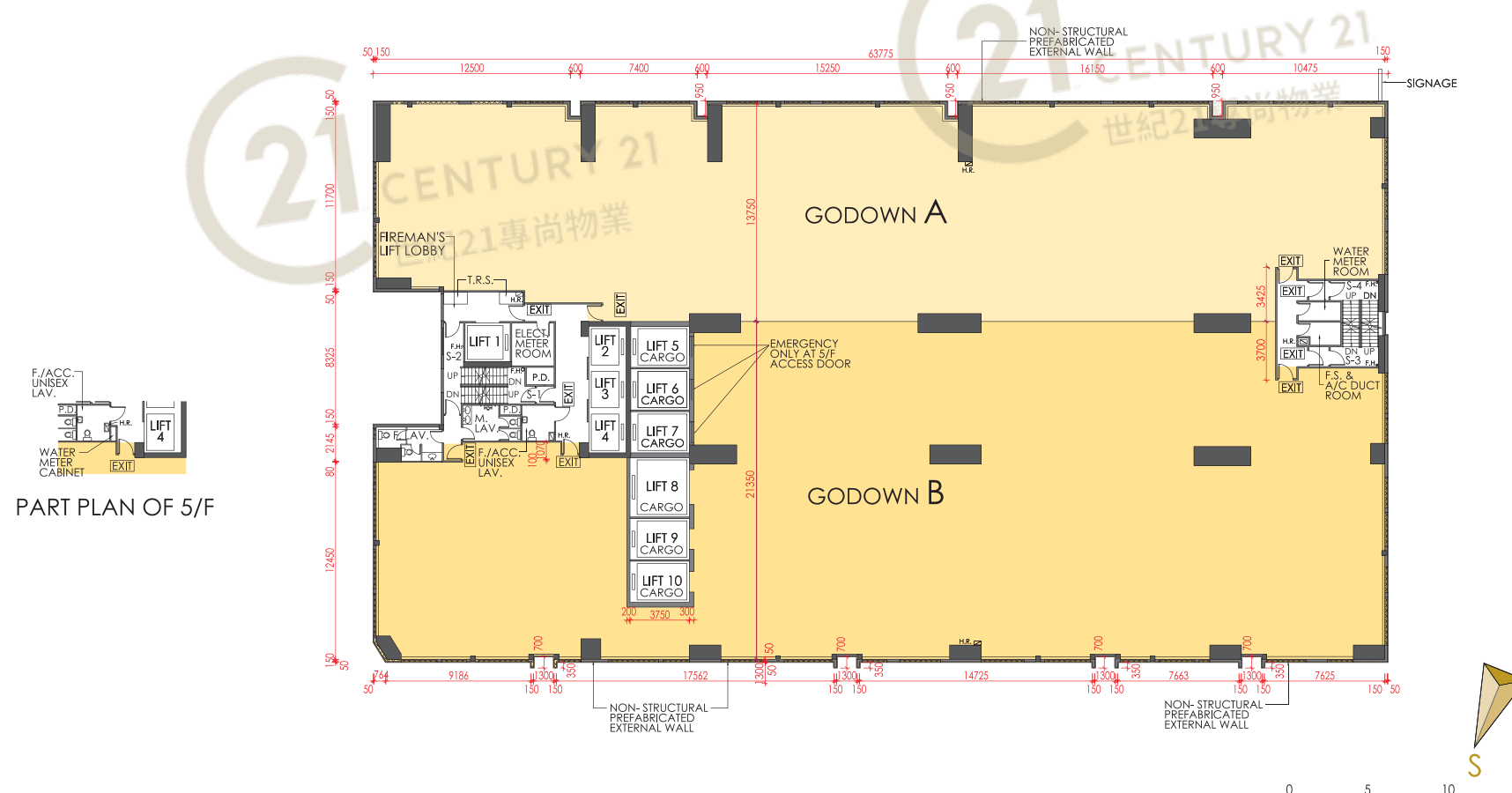
3rd Floor Area Schedule

| GODOWN AREA (sq.ft) | GODOWN A | GODOWN B |
|----------------------------------|----------|----------|
| Gross Floor Area | 12,036 | 16,432 |
| Saleable Area | 9,147 | 12,488 |
| Unit Covered Area | 9,147 | 12,488 |
| Apportioned Share Of Common Area | 2,889 | 3,944 |

Excluding 4/F, 13/F and 14/F 不設 4、13 及 14 樓
 The internal areas of units on upper floors are in general slightly larger than lower floors due to possible reduced thickness of structural walls on those floors.
 層數較高單位由於結構牆較低層單位稍薄，因而室內空間或會稍為增多。
 All given information on this brochure is for reference only and the plan is subject to final Government approved plans and documentation.
 本售樓書所提供的資料僅供參考，一切內容均以政府最後批准圖則及法律文件為準。

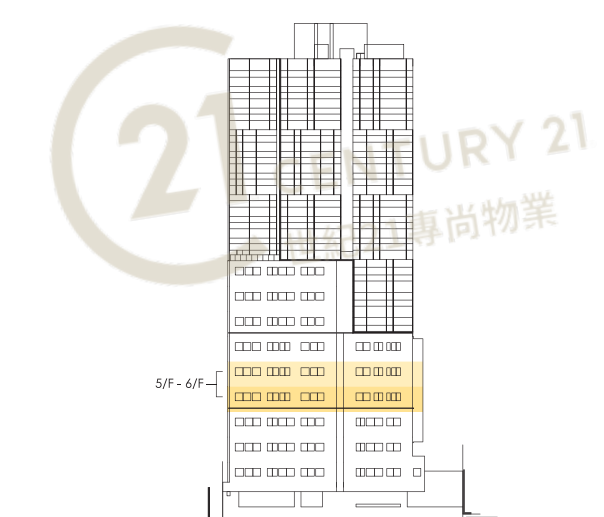


5th - 6th FLOOR PLAN (5樓至6樓樓面平面圖)

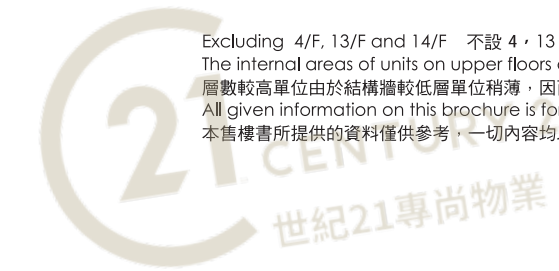


5th - 6th Floor Area Schedule

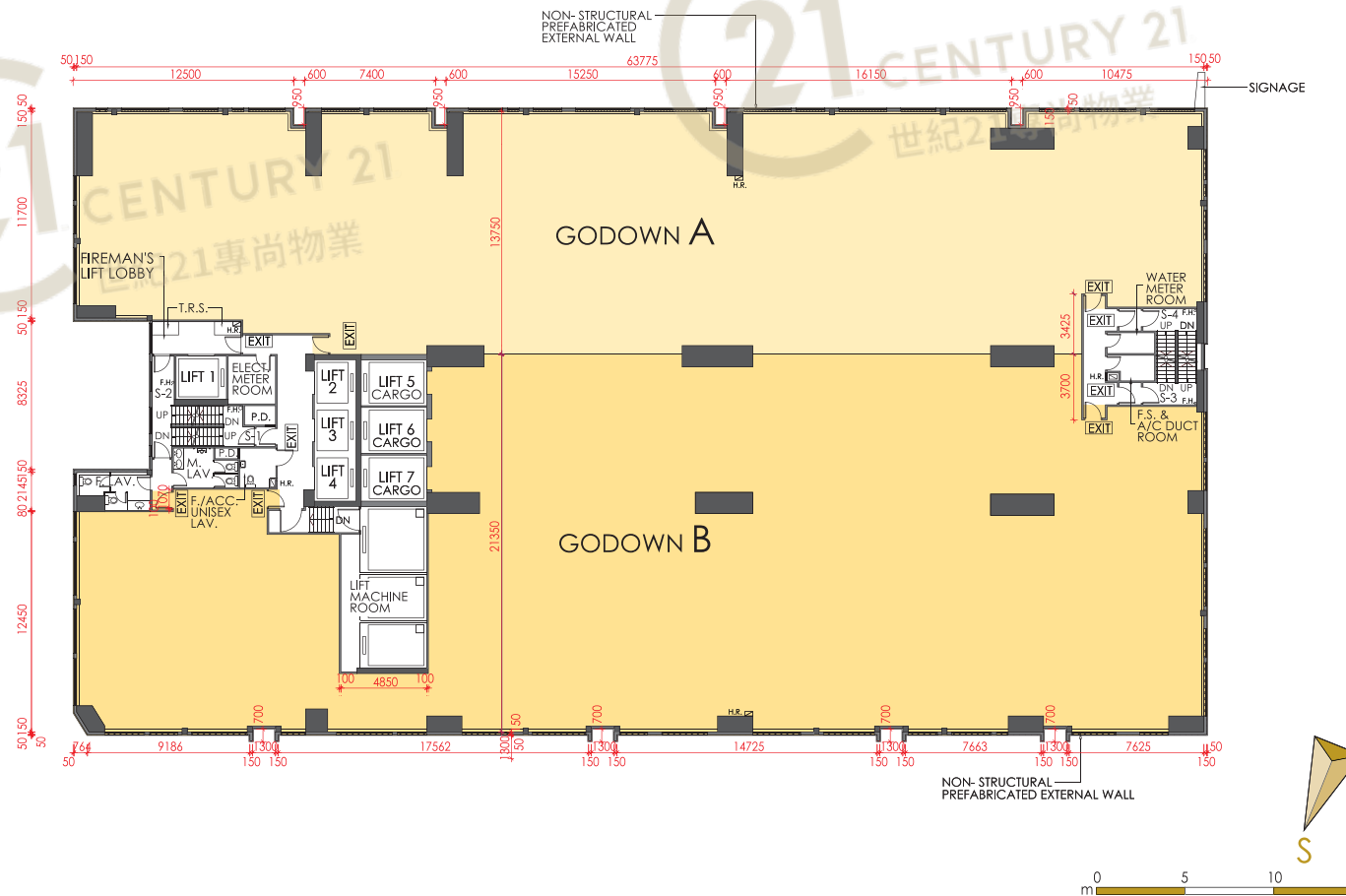
| GODOWN AREA (sq.ft) | GODOWN A | GODOWN B |
|----------------------------------|----------|----------|
| Gross Floor Area | 12,036 | 16,432 |
| Saleable Area | 9,147 | 12,488 |
| Unit Covered Area | 9,147 | 12,488 |
| Apportioned Share Of Common Area | 2,889 | 3,944 |



Excluding 4/F, 13/F and 14/F 不設4, 13及14樓
 The internal areas of units on upper floors are in general slightly larger than lower floors due to possible reduced thickness of structural walls on those floors.
 層數較高單位由於結構牆較低層單位稍薄，因而室內空間或會稍為增多。
 All given information on this brochure is for reference only and the plan is subject to final Government approved plans and documentation.
 本售樓書所提供的資料僅供參考，一切內容均以政府最後批准圖則及法律文件為準。



7th FLOOR PLAN (7樓樓面平面圖)



7th Floor Area Schedule

| GODOWN AREA (sq.ft) | GODOWN A | GODOWN B |
|----------------------------------|----------|----------|
| Gross Floor Area | 12,036 | 16,170 |
| Saleable Area | 9,147 | 12,289 |
| Unit Covered Area | 9,147 | 12,289 |
| Apportioned Share Of Common Area | 2,889 | 3,881 |

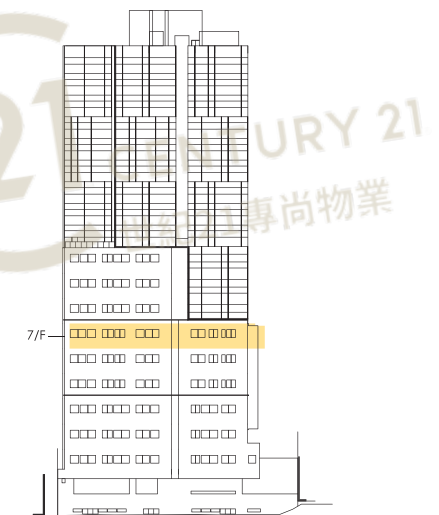
Excluding 4/F, 13/F and 14/F 不設 4、13 及 14 樓

The internal areas of units on upper floors are in general slightly larger than lower floors due to possible reduced thickness of structural walls on those floors.

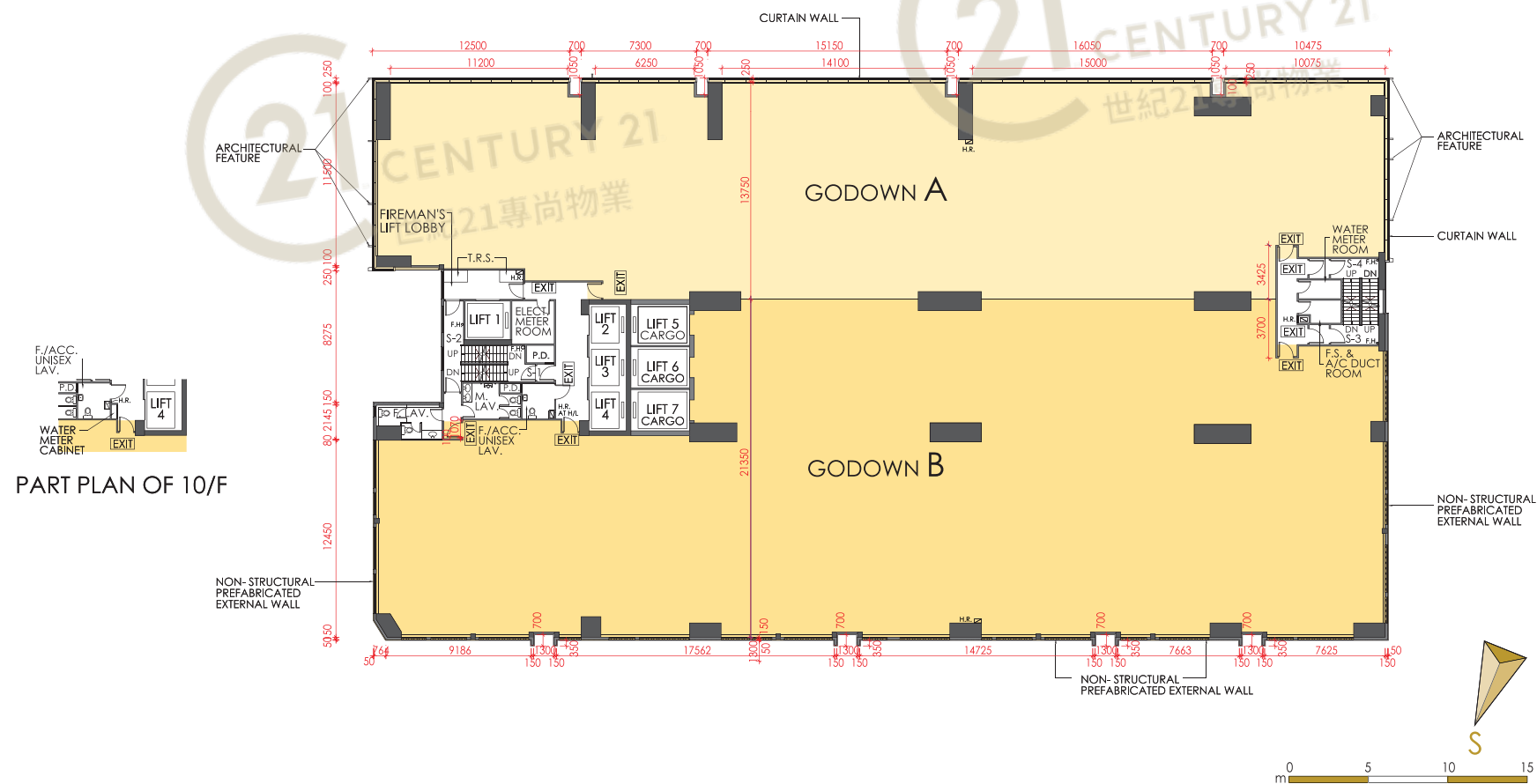
層數較高單位由於結構牆較低層單位稍薄，因而室內空間或會稍為增多。

All given information on this brochure is for reference only and the plan is subject to final Government approved plans and documentation.

本售樓書所提供的資料僅供參考，一切內容均以政府最後批准圖則及法律文件為準。



8th - 10th FLOOR PLAN (8樓至10樓樓面平面圖)



8th - 10th Floor Area Schedule

| GODOWN AREA (sq.ft) | GODOWN A | GODOWN B |
|----------------------------------|----------|----------|
| Gross Floor Area | 12,155 | 16,933 |
| Saleable Area | 9,238 | 12,869 |
| Unit Covered Area | 9,238 | 12,869 |
| Apportioned Share Of Common Area | 2,917 | 4,064 |

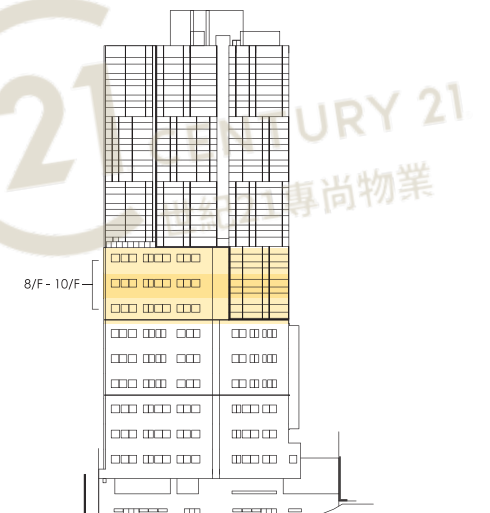
Excluding 4/F, 13/F and 14/F 不設4、13及14樓

The internal areas of units on upper floors are in general slightly larger than lower floors due to possible reduced thickness of structural walls on those floors.

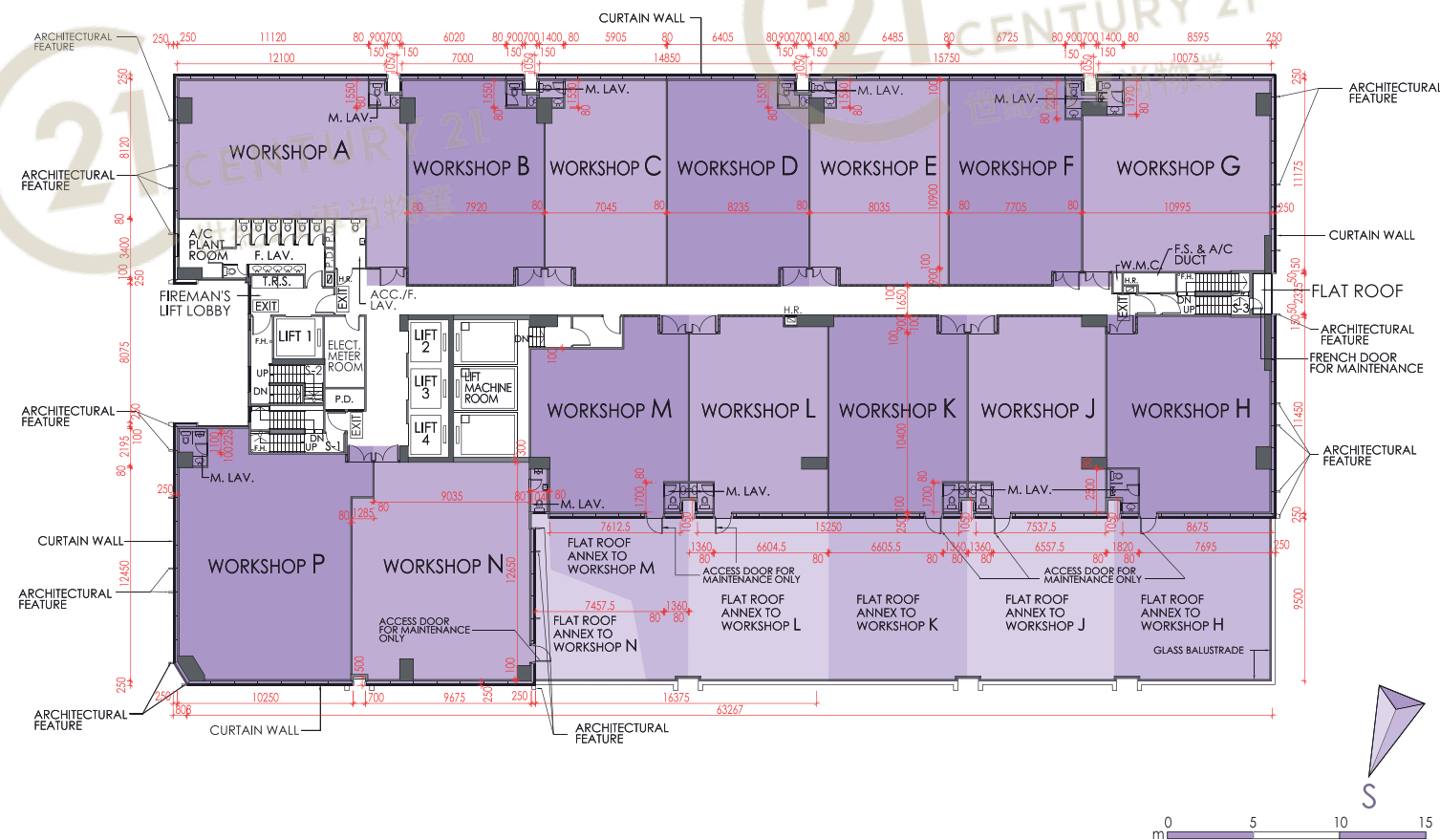
層數較高單位由於結構牆較低層單位稍薄，因而室內空間或會稍為增多。

All given information on this brochure is for reference only and the plan is subject to final Government approved plans and documentation.

本售樓書所提供的資料僅供參考，一切內容均以政府最後批准圖則及法律文件為準。



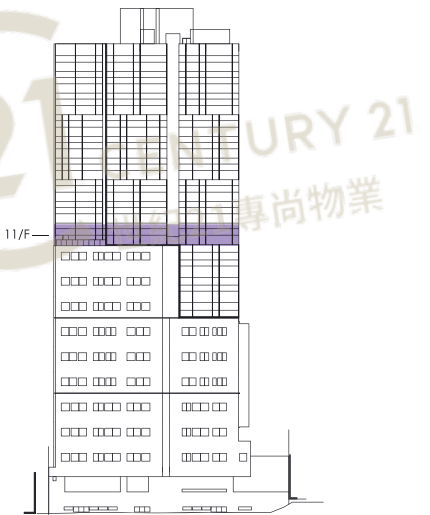
11th FLOOR PLAN (11樓樓面平面圖)



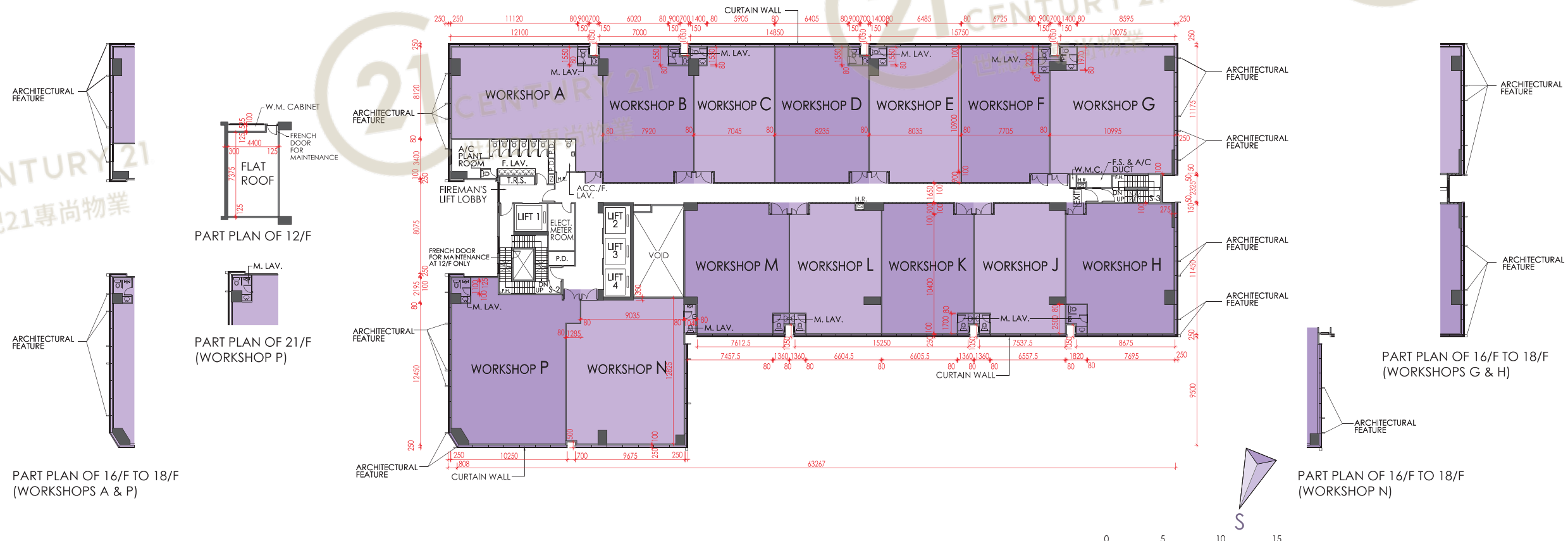
11th Floor Area Schedule

| WORKSHOP AREA (sq.ft) | A | B | C | D | E | F | G | H | J | K | L | M | N | P |
|----------------------------------|-------|-------|-------|-------|-------|-------|-------|-------|-------|-------|-------|-------|-------|-------|
| Gross Floor Area | 1,938 | 1,553 | 1,405 | 1,613 | 1,588 | 1,536 | 2,063 | 1,841 | 1,511 | 1,519 | 1,511 | 1,519 | 2,257 | 2,401 |
| Saleable Area | 1,318 | 1,056 | 956 | 1,097 | 1,080 | 1,045 | 1,403 | 1,252 | 1,028 | 1,033 | 1,028 | 1,033 | 1,535 | 1,633 |
| Unit Covered Area | 1,318 | 1,056 | 956 | 1,097 | 1,080 | 1,045 | 1,403 | 1,252 | 1,028 | 1,033 | 1,028 | 1,033 | 1,535 | 1,633 |
| Apportioned Share Of Common Area | 620 | 497 | 449 | 516 | 508 | 491 | 660 | 589 | 483 | 486 | 483 | 486 | 722 | 768 |
| Flat Roof | | | | | | | | 958 | 831 | 824 | 824 | 552 | 359 | |

Excluding 4/F, 13/F and 14/F 不設4、13及14樓
 The internal areas of units on upper floors are in general slightly larger than lower floors due to possible reduced thickness of structural walls on those floors.
 層數較高單位由於結構牆較低層單位稍薄，因而室內空間或會稍為增多。
 All given information on this brochure is for reference only and the plan is subject to final Government approved plans and documentation.
 本售樓書所提供的資料僅供參考，一切內容均以政府最後批准圖則及法律文件為準。



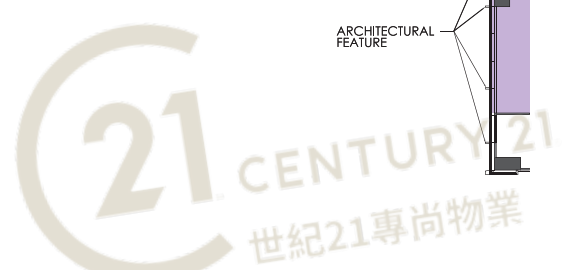
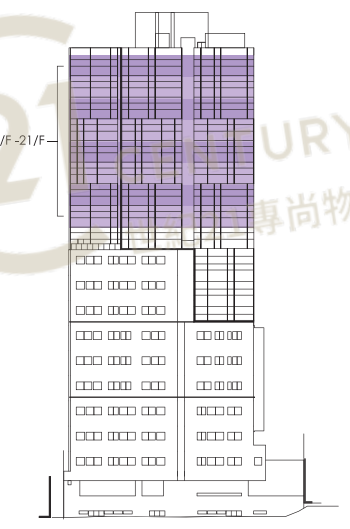
12th - 21st FLOOR PLAN (12樓至21樓樓面平面圖)



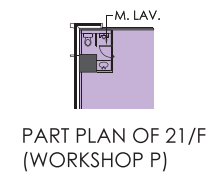
12th - 21st Floor Area Schedule

| WORKSHOP AREA (sq.ft) | A | B | C | D | E | F | G | H | J | K | L | M | N | P |
|----------------------------------|-------|-------|-------|-------|-------|-------|-------|-------|-------|-------|-------|-------|-------|-------|
| Gross Floor Area | 1,938 | 1,553 | 1,405 | 1,613 | 1,588 | 1,536 | 2,063 | 1,841 | 1,511 | 1,519 | 1,511 | 1,682 | 2,257 | 2,401 |
| Saleable Area | 1,318 | 1,056 | 956 | 1,097 | 1,080 | 1,045 | 1,403 | 1,252 | 1,028 | 1,033 | 1,028 | 1,144 | 1,535 | 1,633 |
| Unit Covered Area | 1,318 | 1,056 | 956 | 1,097 | 1,080 | 1,045 | 1,403 | 1,252 | 1,028 | 1,033 | 1,028 | 1,144 | 1,535 | 1,633 |
| Apportioned Share Of Common Area | 620 | 497 | 449 | 516 | 508 | 491 | 660 | 589 | 483 | 486 | 483 | 538 | 722 | 768 |

Excluding 4/F, 13/F and 14/F 不設4, 13及14樓
 The internal areas of units on upper floors are in general slightly larger than lower floors due to possible reduced thickness of structural walls on those floors.
 層數較高單位由於結構牆較低層單位稍薄，因而室內空間或會稍為增多。
 All given information on this brochure is for reference only and the plan is subject to final Government approved plans and documentation.
 本售樓書所提供的資料僅供參考，一切內容均以政府最後批准圖則及法律文件為準。



PART PLAN OF 12/F

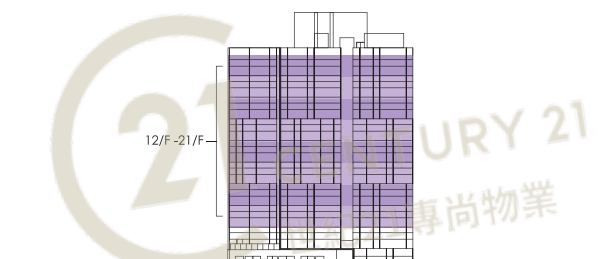
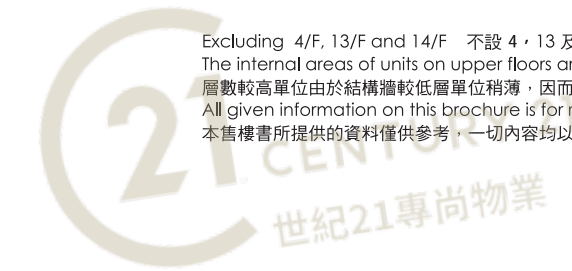


PART PLAN OF 21/F (WORKSHOP P)

PART PLAN OF 16/F TO 18/F (WORKSHOPS A & P)

PART PLAN OF 16/F TO 18/F (WORKSHOPS G & H)

PART PLAN OF 16/F TO 18/F (WORKSHOP N)



ROOF PLAN (天台平面圖)



UPPER ROOF PLAN (上層天台平面圖)



Excluding 4/F, 13/F and 14/F 不設 4、13 及 14 樓
 The internal areas of units on upper floors are in general slightly larger than lower floors due to possible reduced thickness of structural walls on those floors.
 層數較高單位由於結構牆較低層單位稍薄，因而室內空間或會稍為增多。
 All given information on this brochure is for reference only and the plan is subject to final Government approved plans and documentation.
 本售樓書所提供的資料僅供參考，一切內容均以政府最後批准圖則及法律文件為準。

