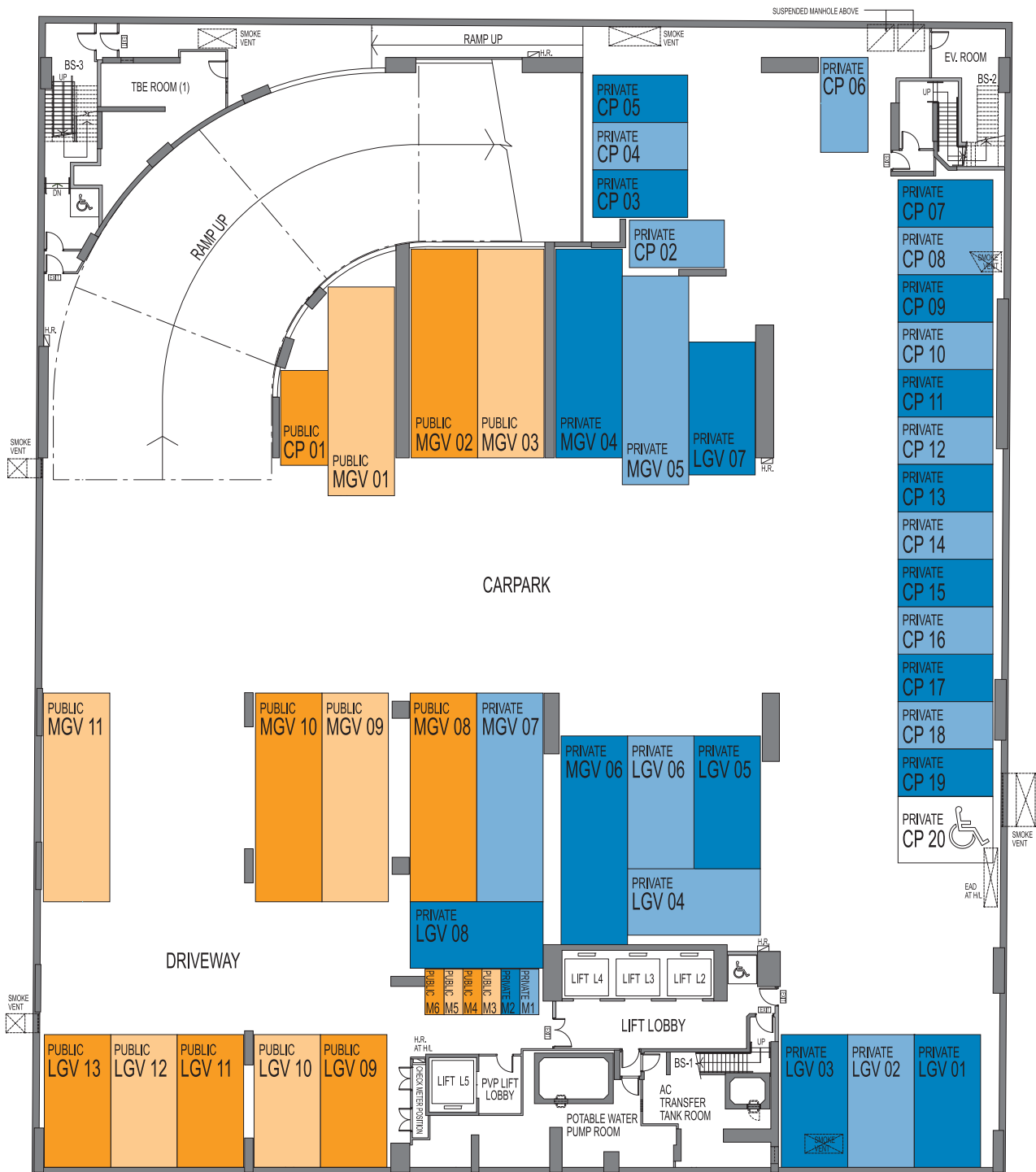


# BASEMENT FLOOR



SCALE 0m 9m

## LEGEND

- PRIVATE VEHICLES PARKING SPACES
- PUBLIC VEHICLES PARKING SPACES

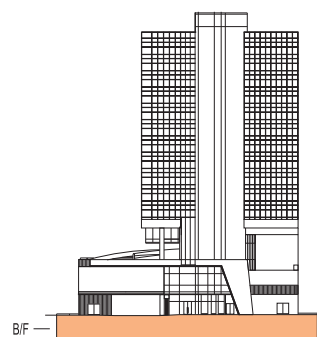
## 備註 Notes

不設4樓、13樓及14樓 Omitted 4/F, 13/F and 14/F

賣方保留權利不時改動發展項目的建築圖則及其他圖則。發展項目的設計以政府相關部門最後批准的圖則為準。The vendor reserves the right to make alterations to the building plans and other plans relating to the Development from time to time, and the design of the Development shall be subject to the final plans approved by the relevant Government authorities.

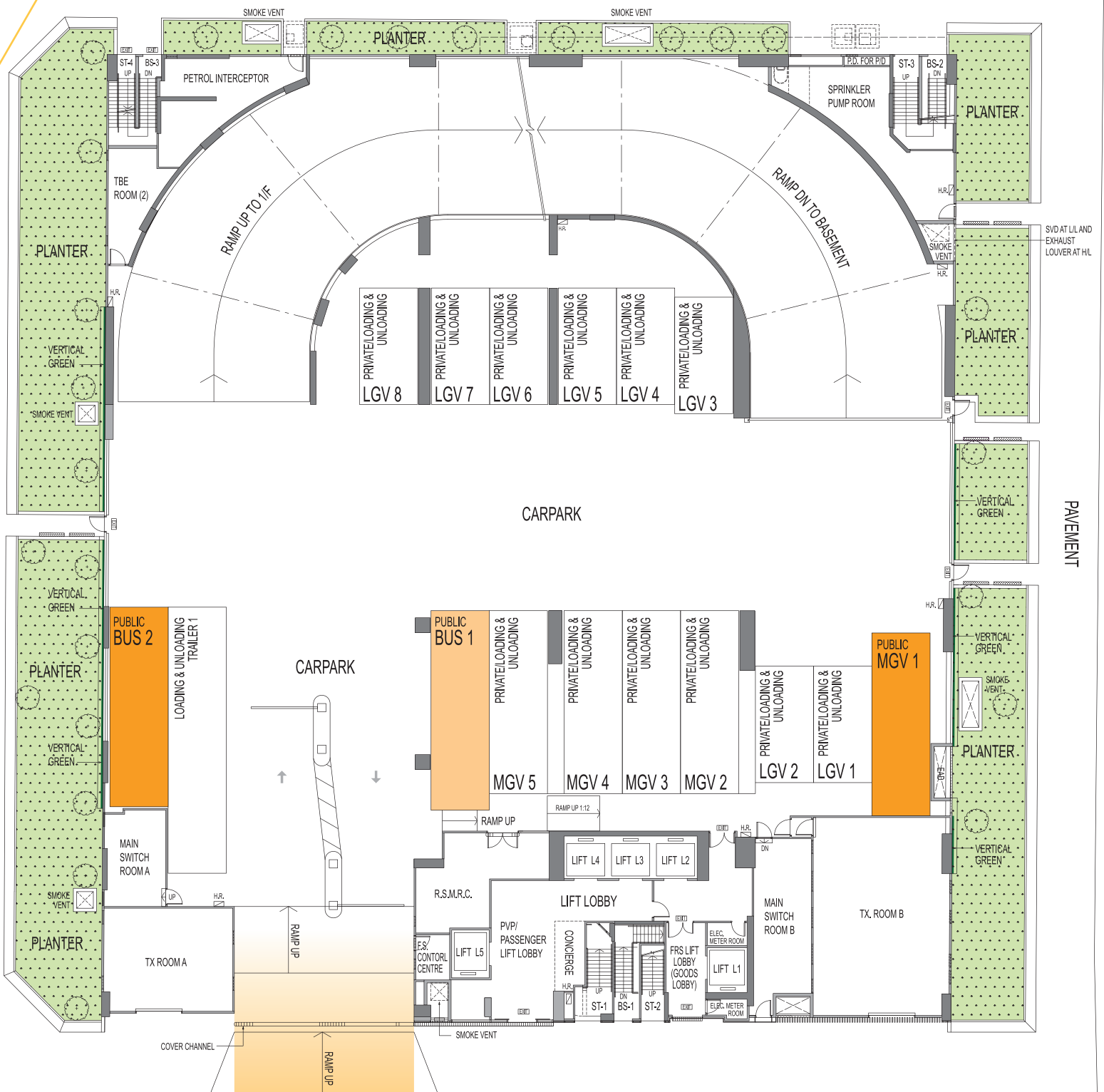
因較高樓層的結構牆的厚度遞減，較高樓層的單位的內部面積，一般比較低樓層的單位的內部面積稍大。The internal areas of units on upper floors will generally be slightly larger than lower floors due to the reducing thickness of structural walls on upper levels.

請就停車位的尺寸參閱「發展項目的資料」。Please see "Information for Reference" for dimensions of parking spaces.



# GROUND FLOOR

安福街 ON FUK STREET



單車徑 CYCLING LANE

安全街 ON CHUEN STREET



SCALE 0m 9m

LEGEND

PUBLIC VEHICLES PARKING SPACES

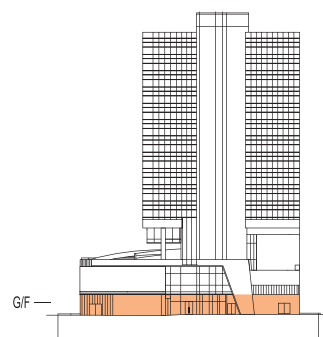
備註 Notes

不設4樓、13樓及14樓 Omitted 4/F, 13/F and 14/F

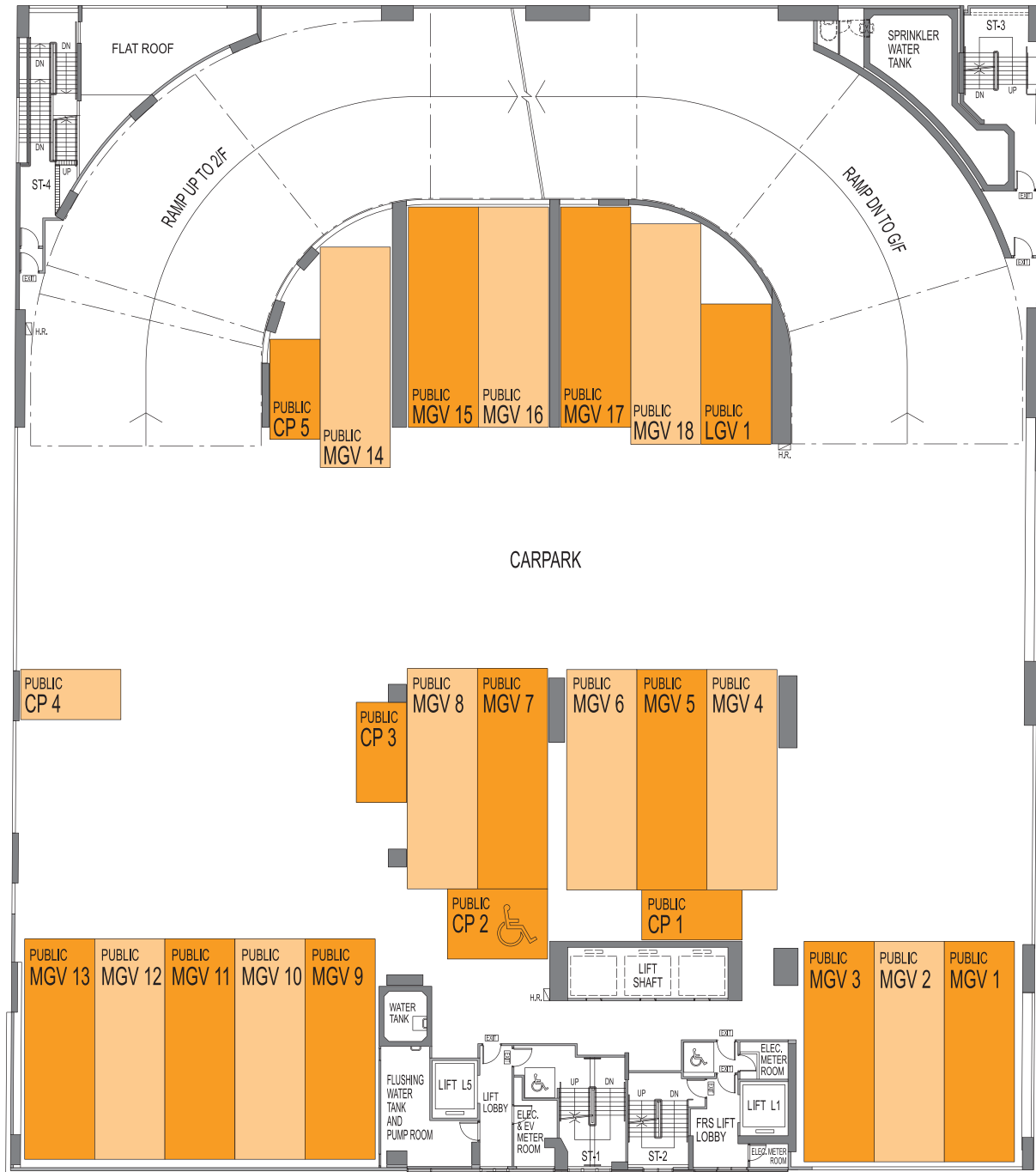
賣方保留權利不時改動發展項目的建築圖則及其他圖則，發展項目的設計以政府相關部門最後批准的圖則為準。The vendor reserves the right to make alterations to the building plans and other plans relating to the Development from time to time, and the design of the Development shall be subject to the final plans approved by the relevant Government authorities.

因較高樓層的結構牆的厚度遞減，較高樓層的單位的內部面積，一般比較低樓層的單位的內部面積稍大。The internal areas of units on upper floors will generally be slightly larger than lower floors due to the reducing thickness of structural walls on upper levels.

請就停車位的尺寸參閱「發展項目的資料」。Please see "Information for Reference" for dimensions of parking spaces.



# 1ST FLOOR



SCALE 0m 9m

## LEGEND

PUBLIC VEHICLES PARKING SPACES

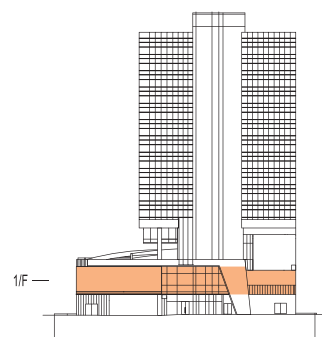
## 備註 Notes

不設4樓、13樓及14樓 Omitted 4/F, 13/F and 14/F

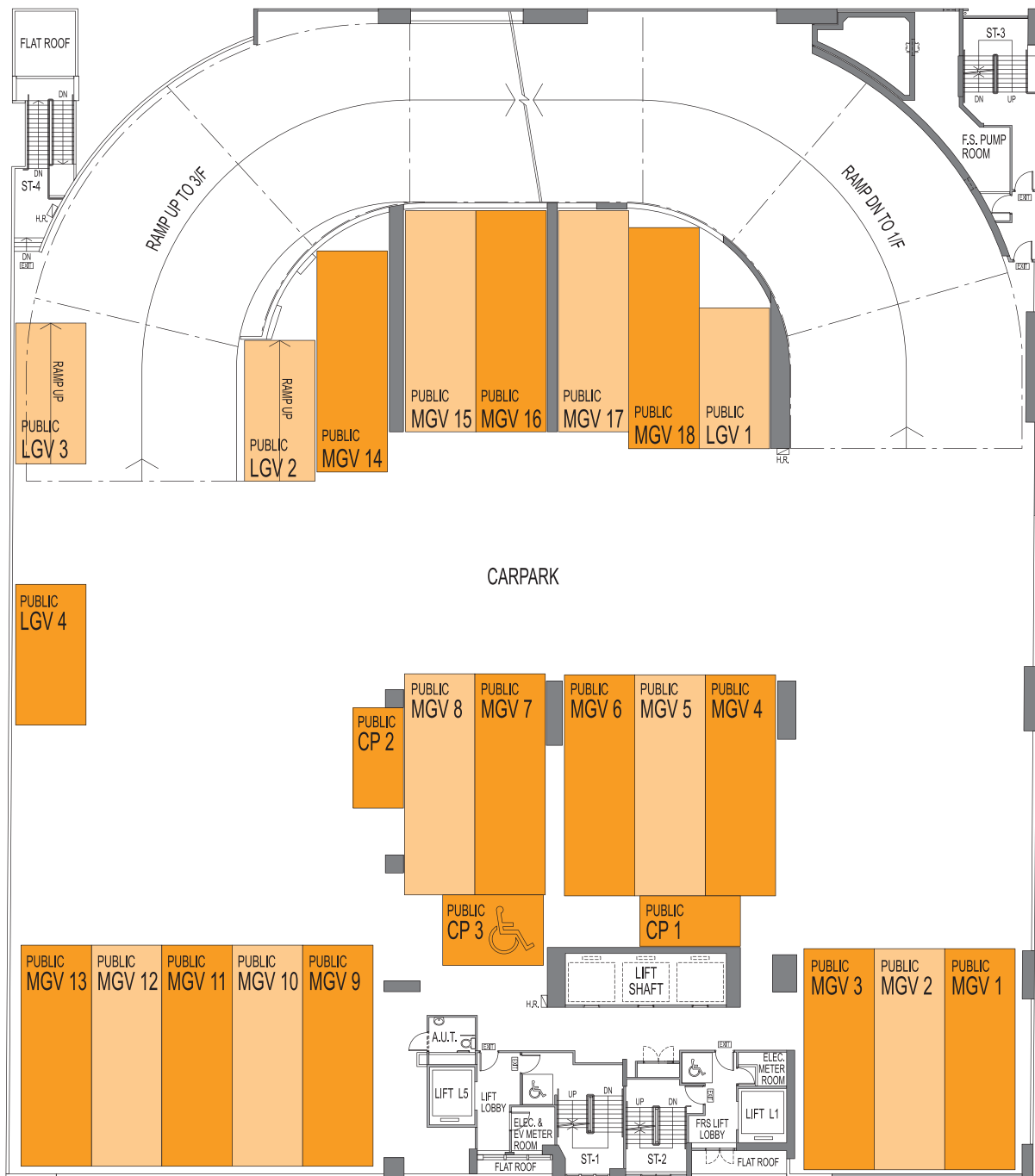
賣方保留權利不時改動發展項目的建築圖則及其他圖則，發展項目的設計以政府相關部門最後批准的圖則為準。The vendor reserves the right to make alterations to the building plans and other plans relating to the Development from time to time, and the design of the Development shall be subject to the final plans approved by the relevant Government authorities.

因較高樓層的結構牆的厚度遞減，較高樓層的單位的內部面積，一般比較低樓層的單位的內部面積稍大。The internal areas of units on upper floors will generally be slightly larger than lower floors due to the reducing thickness of structural walls on upper levels.

請就停車位的尺寸參閱「發展項目的資料」。Please see "Information for Reference" for dimensions of parking spaces.



# 2ND FLOOR



SCALE 0m 9m

## LEGEND

 PUBLIC VEHICLES PARKING SPACES

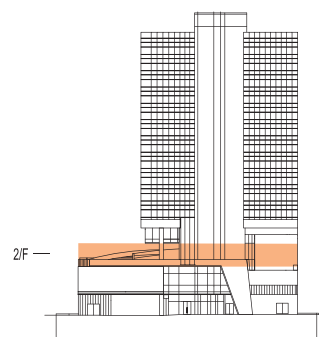
## 備註 Notes

不設4樓、13樓及14樓 Omitted 4/F, 13/F and 14/F

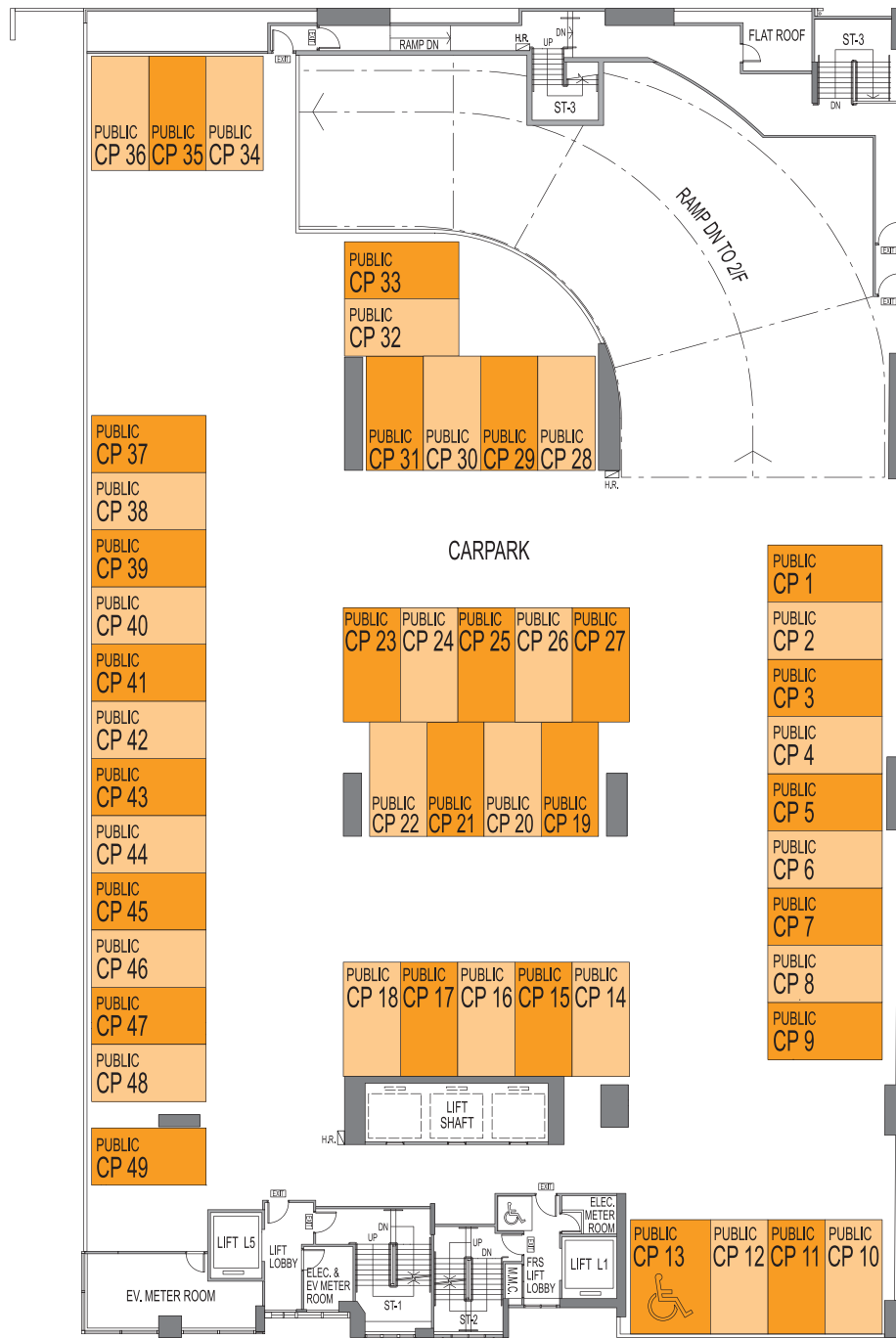
賣方保留權利不時改動發展項目的建築圖則及其他圖則，發展項目的設計以政府相關部門最後批准的圖則為準。The vendor reserves the right to make alterations to the building plans and other plans relating to the Development from time to time, and the design of the Development shall be subject to the final plans approved by the relevant Government authorities.

因較高樓層的結構牆的厚度遞減，較高樓層的單位的內部面積，一般比較低樓層的單位的內部面積稍大。The internal areas of units on upper floors will generally be slightly larger than lower floors due to the reducing thickness of structural walls on upper levels.

請就停車位的尺寸參閱「發展項目的資料」。Please see "Information for Reference" for dimensions of parking spaces.



# 3RD FLOOR



SCALE 0m 9m

## LEGEND

 PUBLIC VEHICLES PARKING SPACES

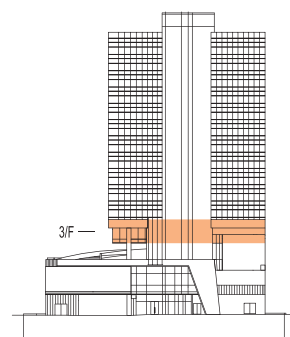
## 備註 Notes

不設4樓、13樓及14樓 Omitted 4/F, 13/F and 14/F

賣方保留權利不時改動發展項目的建築圖則及其他圖則，發展項目的設計以政府相關部門最後批准的圖則為準。The vendor reserves the right to make alterations to the building plans and other plans relating to the Development from time to time, and the design of the Development shall be subject to the final plans approved by the relevant Government authorities.

因較高樓層的結構牆的厚度遞減，較高樓層的單位的內部面積，一般比較低樓層的單位的內部面積稍大。The internal areas of units on upper floors will generally be slightly larger than lower floors due to the reducing thickness of structural walls on upper levels.

請就停車位的尺寸參閱「發展項目的資料」。Please see "Information for Reference" for dimensions of parking spaces.



# 5TH, 6TH-17TH FLOOR

## 5<sup>th</sup> Floor Area Schedule

Workshop	Area(sq.ft)	Gross Floor Area	Saleable Area	Unit Covered Area	Apportioned Share Of Common Area
Workshop A		1,890	1,248	1,248	642
Workshop B		2,022	1,335	1,335	687
Workshop C		1,630	1,076	1,076	554
Workshop D		1,653	1,091	1,091	562
Workshop E		1,589	1,049	1,049	540
Workshop F		1,775	1,172	1,172	603
Workshop G		2,040	1,347	1,347	693
Flat Roof for Workshop G		-	122		
Workshop H		1,936	1,278	1,278	658
Flat Roof for Workshop H		-	122		
Workshop J		1,809	1,194	1,194	615
Workshop K		1,645	1,086	1,086	559
Workshop L		1,656	1,093	1,093	563
Workshop M		1,651	1,090	1,090	561
Workshop N		1,572	1,038	1,038	534
Workshop P		2,019	1,333	1,333	686

Floor to Floor Height: approximately 3,800 mm

## 6<sup>th</sup>-12<sup>th</sup> & 15<sup>th</sup>-17<sup>th</sup> Floor Area Schedule

Workshop	Area(sq.ft)	Gross Floor Area	Saleable Area	Unit Covered Area	Apportioned Share Of Common Area
Workshop A		1,890	1,248	1,248	642
Workshop B		2,022	1,335	1,335	687
Workshop C		1,630	1,076	1,076	554
Workshop D		1,653	1,091	1,091	562
Workshop E		1,589	1,049	1,049	540
Workshop F		1,775	1,172	1,172	603
Workshop G		2,040	1,347	1,347	693
Workshop H		1,936	1,278	1,278	658
Workshop J		1,809	1,194	1,194	615
Workshop K		1,645	1,086	1,086	559
Workshop L		1,656	1,093	1,093	563
Workshop M		1,651	1,090	1,090	561
Workshop N		1,572	1,038	1,038	534
Workshop P		2,019	1,333	1,333	686

Floor to Floor Height: approximately 3,800 mm

### 備註 Notes

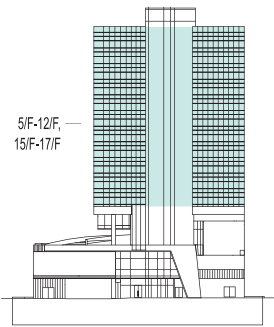
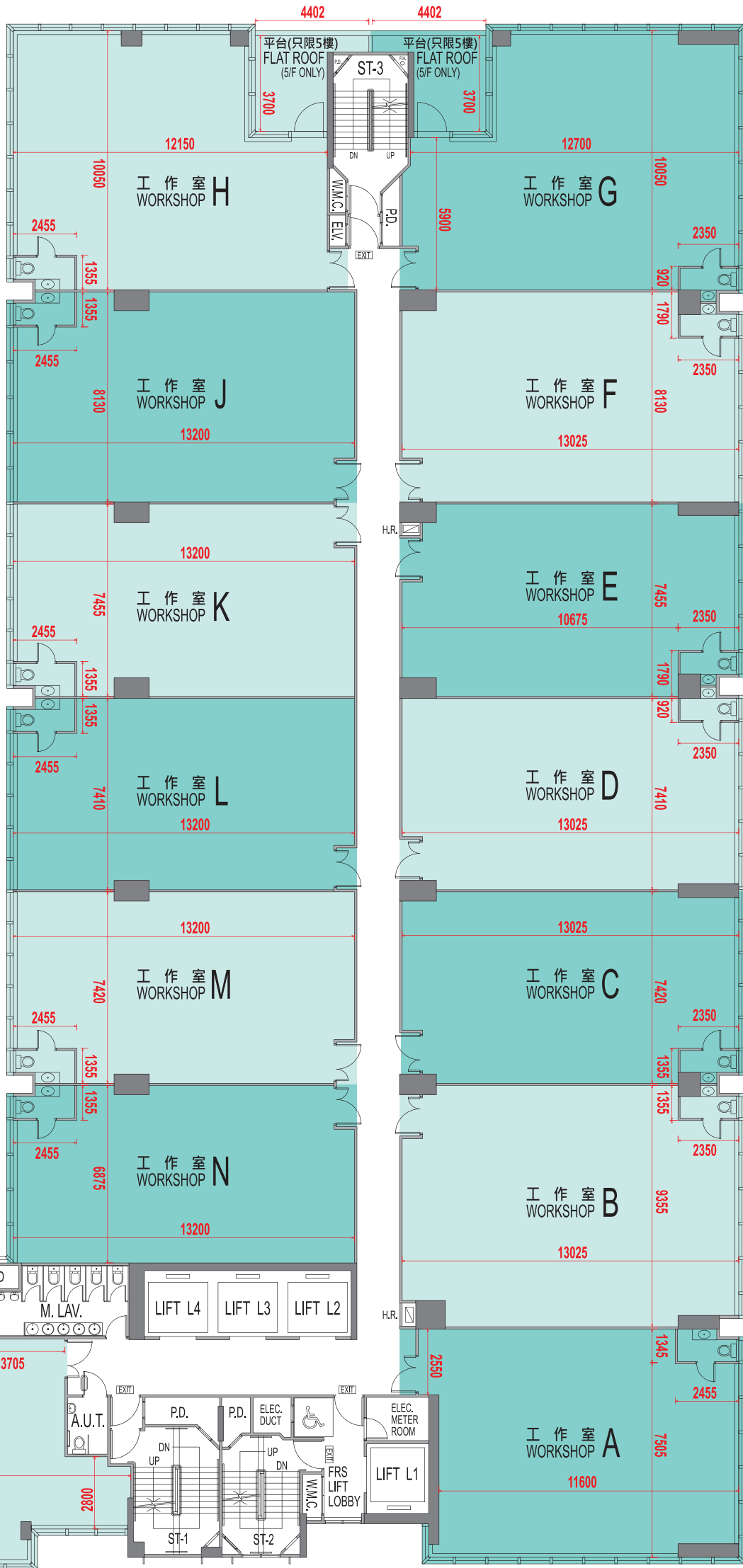
不設4樓、13樓及14樓 Omitted 4/F, 13/F and 14/F

賣方保留權利不時改動發展項目的建築圖則及其他圖則，發展項目的設計以政府相關部門最後批准的圖則為準。The vendor reserves the right to make alterations to the building plans and other plans relating to the Development from time to time, and the design of the Development shall be subject to the final plans approved by the relevant Government authorities.

因較高樓層的結構牆的厚度遞減，較高樓層的單位的內部面積，一般比較低樓層的單位的內部面積稍大。The internal areas of units on upper floors will generally be slightly larger than lower floors due to the reducing thickness of structural walls on upper levels.

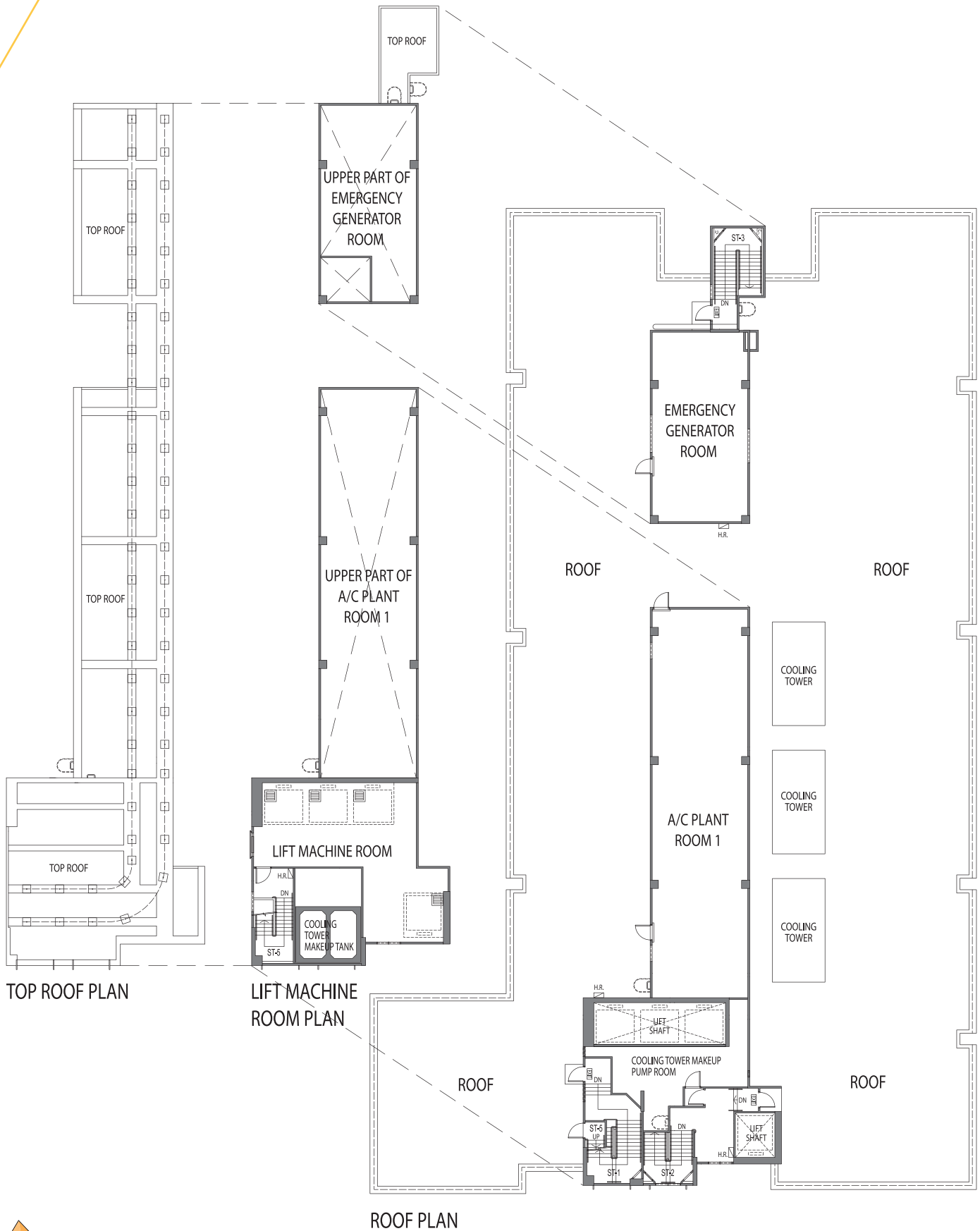
層與層之間的高度指該樓層之石屎地台面與上一層石屎地台面之高度距離。Floor-to-floor height refers to the height between the top surface of the structural slab of a floor and the top surface of its immediate upper floor.

樓面平面圖之尺規所列數字為以毫米標示之建築結構尺寸。The dimensions in the floor plans are all structural dimensions in millimetre.

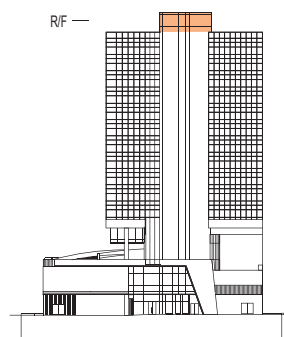


單車徑 CYCLING LANE

# ROOF PLAN



SCALE 0m 9m



**備註 Notes**

不設4樓、13樓及14樓 Omitted 4/F, 13/F and 14/F

賣方保留權利不時改動發展項目的建築圖則及其他圖則。發展項目的設計以政府相關部門最後批准的圖則為準。The vendor reserves the right to make alterations to the building plans and other plans relating to the Development from time to time, and the design of the Development shall be subject to the final plans approved by the relevant Government authorities.

因較高樓層的結構牆的厚度遞減，較高樓層的單位的內部面積，一般比較低樓層的單位的內部面積稍大。The internal areas of units on upper floors will generally be slightly larger than lower floors due to the reducing thickness of structural walls on upper levels.