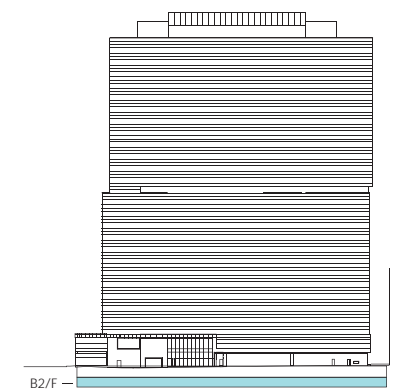


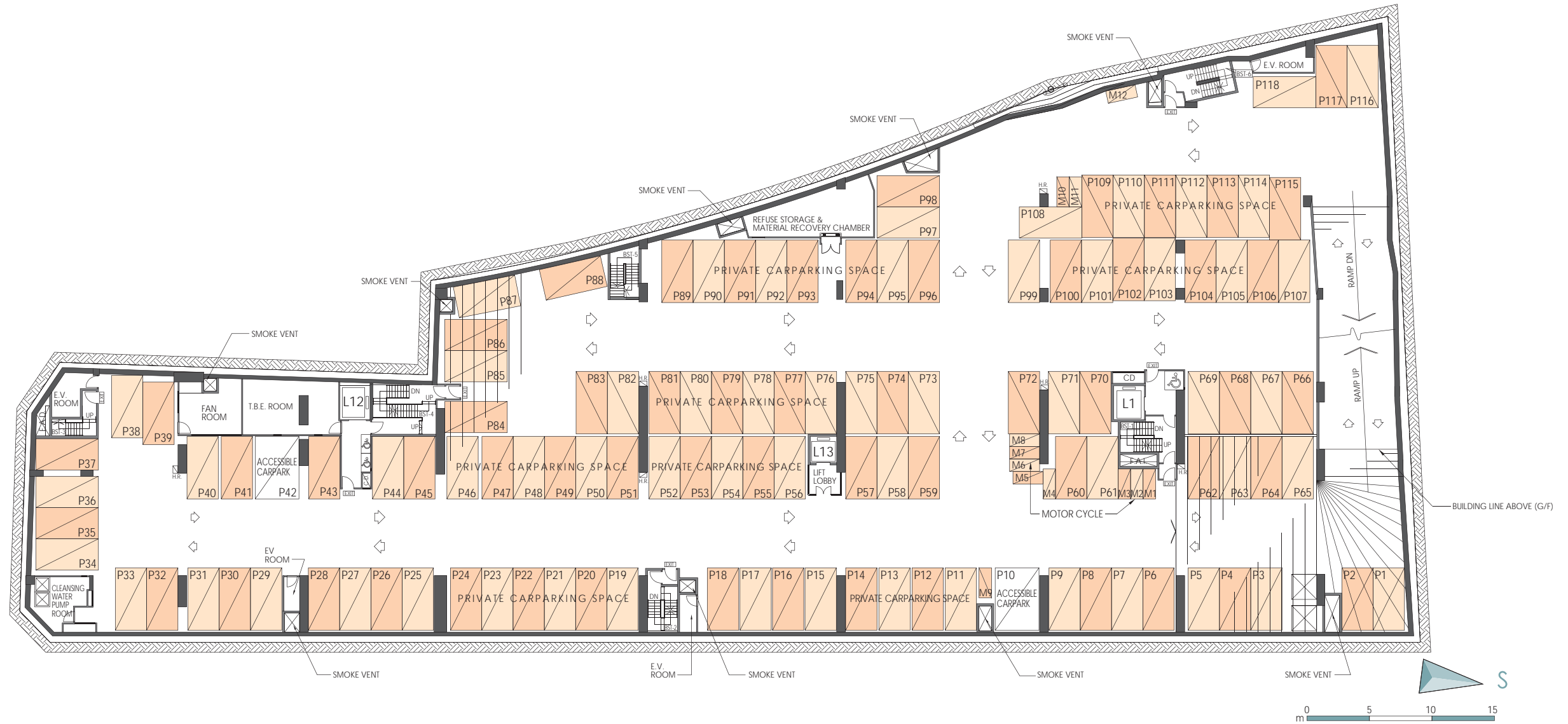
# BASEMENT 2 FLOOR PLAN



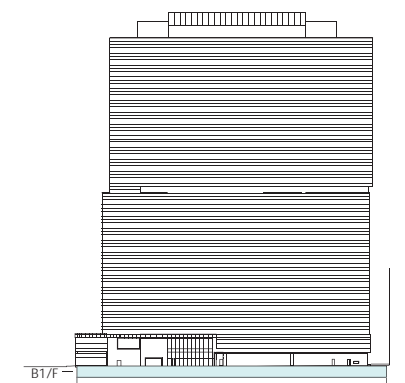
Excluding 4/F, 13/F, 14/F and 24/F 不設 4, 13, 14 及 24 樓  
 The internal areas of units on upper floors are in general slightly larger than lower floors due to possible reduced thickness of structural walls on those floors.  
 層數較高單位由於結構牆較低層單位稍薄，因而室內空間或會稍為增多。  
 All given information on this brochure is for reference only and the plan is subject to final Government approved plans and documentation.  
 本售樓書所提供的資料僅供參考，一切內容均以政府最後批准圖則及法律文件為準。



# BASEMENT 1 FLOOR PLAN



Excluding 4/F, 13/F, 14/F and 24/F 不設 4, 13, 14 及 24 樓  
 The internal areas of units on upper floors are in general slightly larger than lower floors due to possible reduced thickness of structural walls on those floors.  
 層數較高單位由於結構牆較低層單位稍薄，因而室內空間或會稍為增多。  
 All given information on this brochure is for reference only and the plan is subject to final Government approved plans and documentation.  
 本售樓書所提供的資料僅供參考，一切內容均以政府最後批准圖則及法律文件為準。

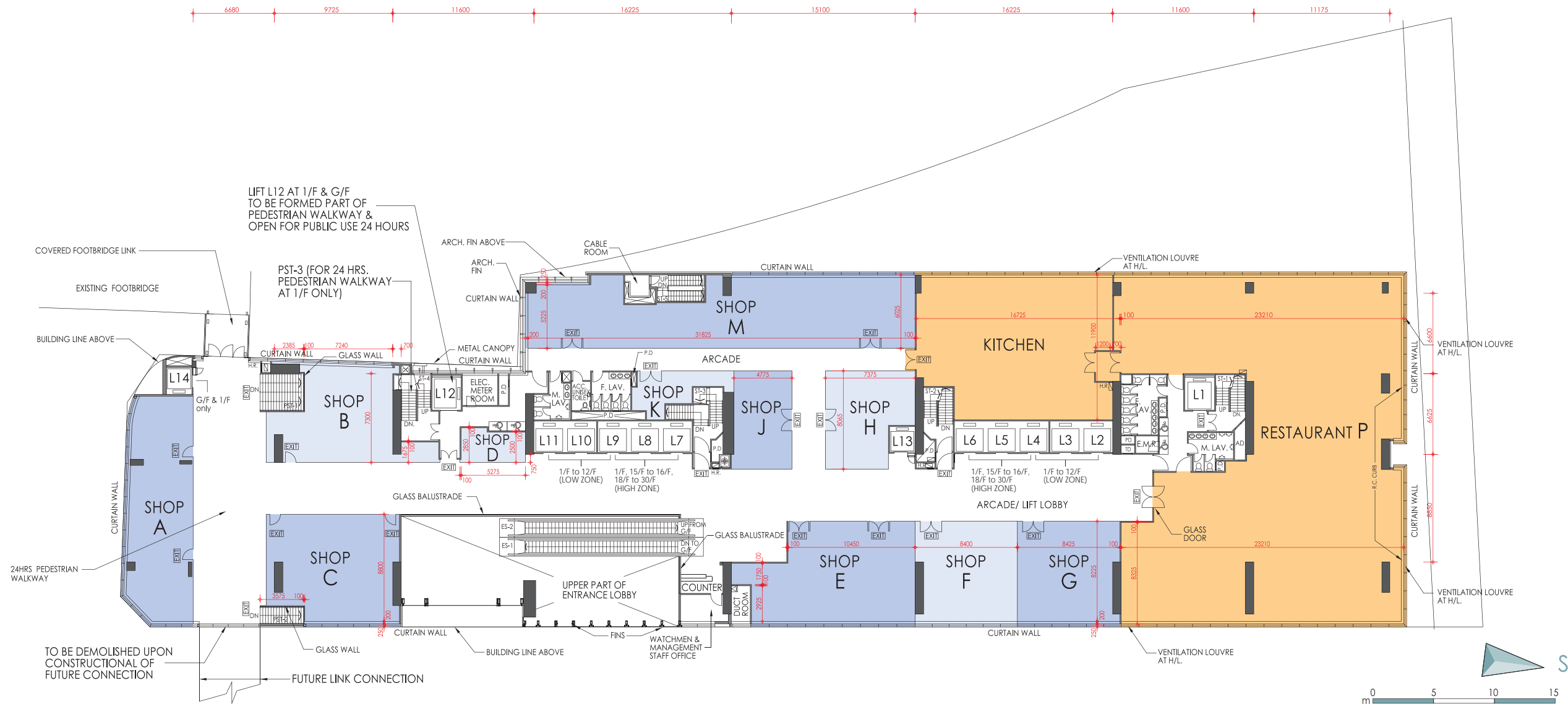


# GROUND FLOOR PLAN



Excluding 4/F, 13/F, 14/F and 24/F 不設 4、13、14 及 24 樓  
 The internal areas of units on upper floors are in general slightly larger than lower floors due to possible reduced thickness of structural walls on those floors.  
 層數較高單位由於結構牆較低層單位稍薄，因而室內空間或會稍為增多。  
 All given information on this brochure is for reference only and the plan is subject to final Government approved plans and documentation.  
 本售樓書所提供的資料僅供參考，一切內容均以政府最後批准圖則及法律文件為準。

# 1<sup>st</sup> FLOOR PLAN

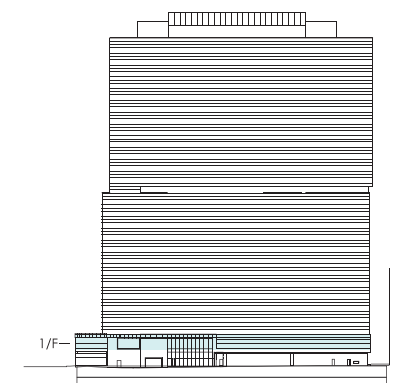


1<sup>st</sup> Floor Area Schedule

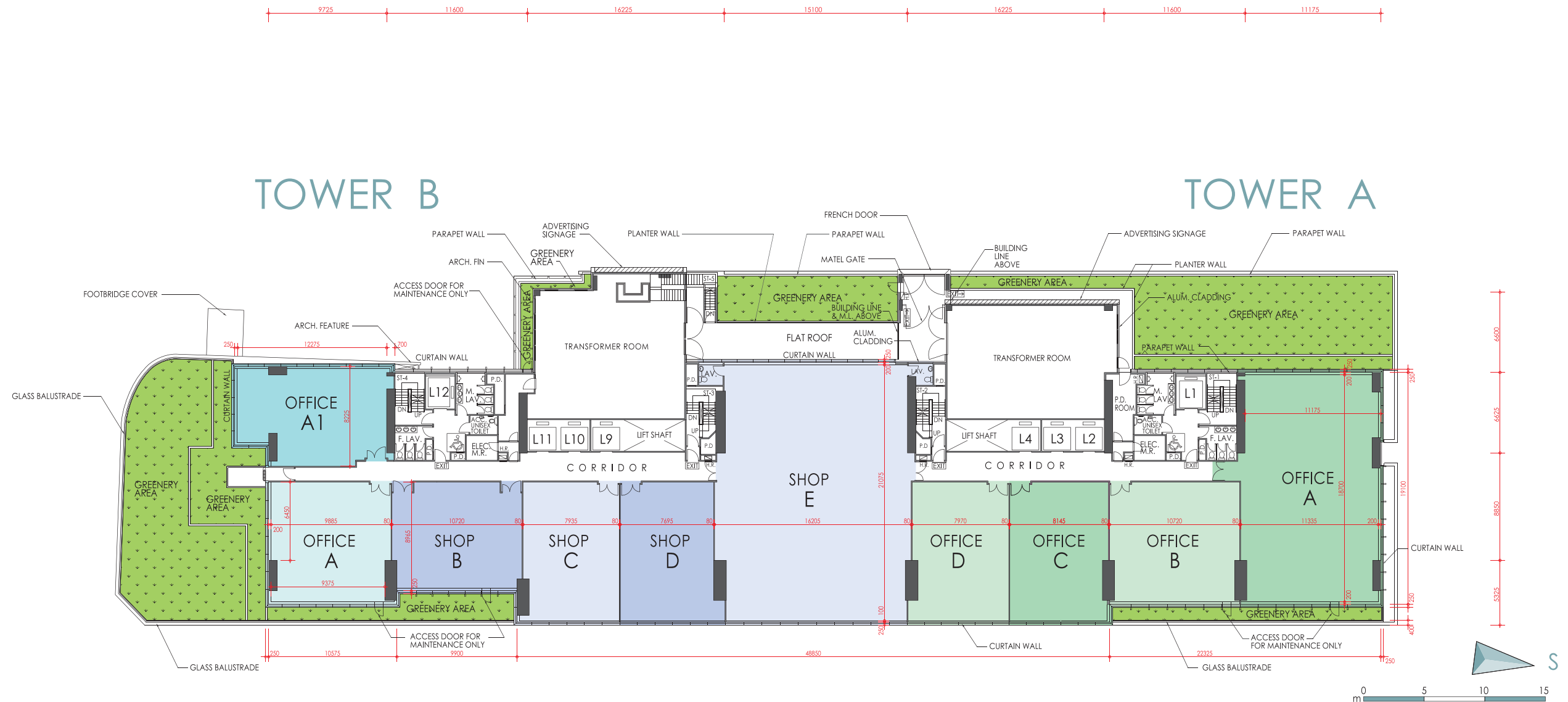
SHOP	AREA (sq.ft)	Gross Floor Area	Saleable Area	Unit Covered Area	Apportioned Share Of Common Area
SHOP A		1,775	1,136	1,136	639
SHOP B		1,482	949	949	533
SHOP C		1,642	1,051	1,051	591
SHOP D		271	174	174	97
SHOP E		1,878	1,202	1,202	676
SHOP F		1,225	784	784	441

SHOP	AREA (sq.ft)	Gross Floor Area	Saleable Area	Unit Covered Area	Apportioned Share Of Common Area
SHOP G		1,236	791	791	445
SHOP H		914	585	585	329
SHOP J		731	468	468	263
SHOP K		364	233	233	131
SHOP M		3,028	1,938	1,938	1,090
RESTAURANT P + KITCHEN		11,747	8,525	8,525	3,222

Excluding 4/F, 13/F, 14/F and 24/F 不設 4、13、14 及 24 樓  
 The internal areas of units on upper floors are in general slightly larger than lower floors due to possible reduced thickness of structural walls on those floors.  
 層數較高單位由於結構牆較低層單位稍薄，因而室內空間或會稍為增多。  
 All given information on this brochure is for reference only and the plan is subject to final Government approved plans and documentation.  
 本售樓書所提供的資料僅供參考，一切內容均以政府最後批准圖則及法律文件為準。



# 2nd FLOOR PLAN



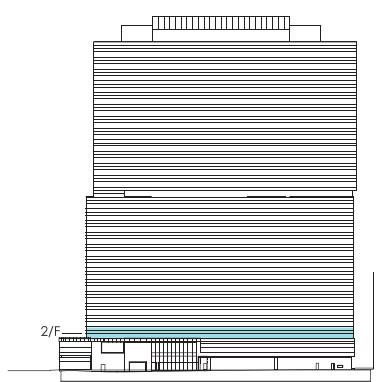
2nd Floor Area Schedule (Tower B)

AREA (sq.ft)	Gross Floor Area	Saleable Area	Unit Covered Area	Apportioned Share Of Common Area
OFFICE A1	1,732	1,178	1,178	554
OFFICE A	1,724	1,173	1,173	551
SHOP B	1,592	1,083	1,083	509
SHOP C	1,533	1,043	1,043	490
SHOP D	1,516	1,031	1,031	485

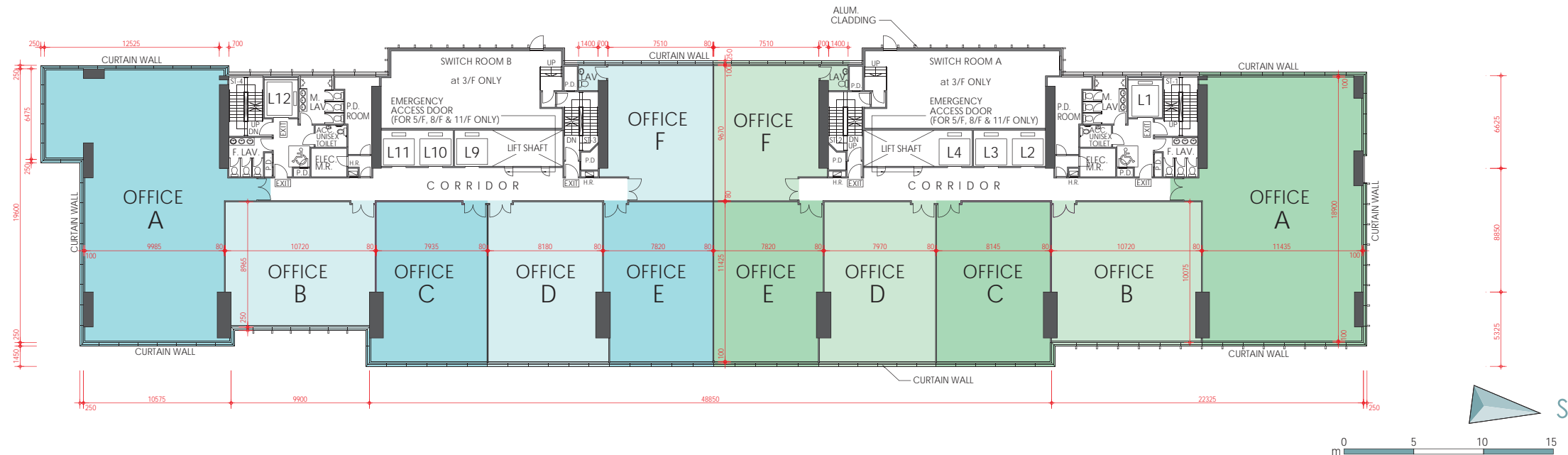
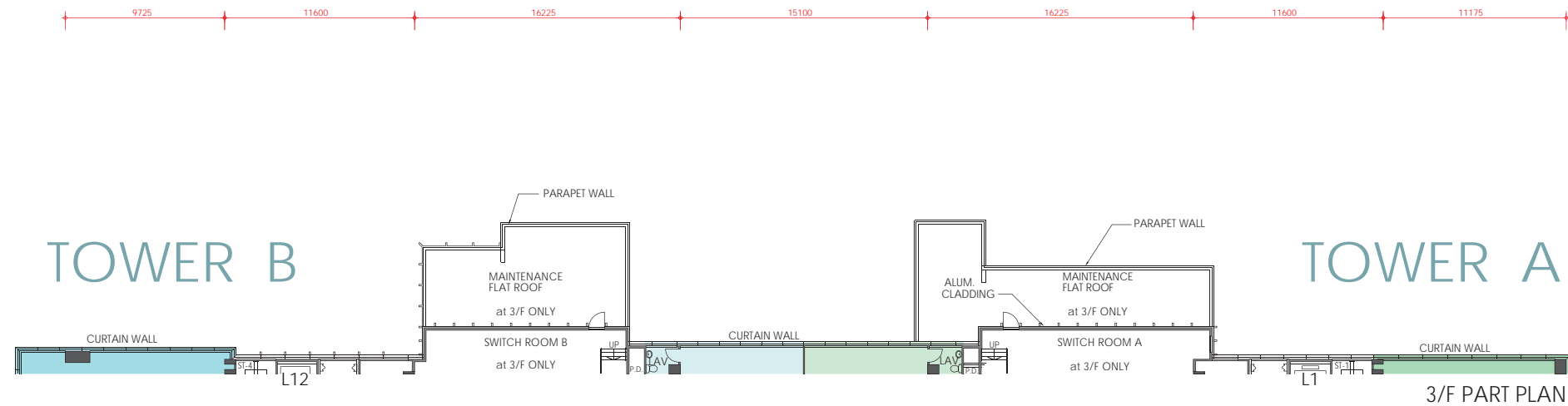
2nd Floor Area Schedule (Tower A)

AREA (sq.ft)	Gross Floor Area	Saleable Area	Unit Covered Area	Apportioned Share Of Common Area
OFFICE A	3,655	2,557	2,557	1,098
OFFICE B	1,779	1,210	1,210	569
OFFICE C	1,553	1,056	1,056	497
OFFICE D	1,533	1,043	1,043	490
SHOP E	5,597	3,868	3,868	1,729

Excluding 4/F, 13/F, 14/F and 24/F 不設 4、13、14 及 24 樓  
 The internal areas of units on upper floors are in general slightly larger than lower floors due to possible reduced thickness of structural walls on those floors.  
 層數較高單位由於結構牆較低層單位稍薄，因而室內空間或會稍為增多。  
 All given information on this brochure is for reference only and the plan is subject to final Government approved plans and documentation.  
 本售樓書所提供的資料僅供參考，一切內容均以政府最後批准圖則及法律文件為準。



# 3rd -12th FLOOR PLAN



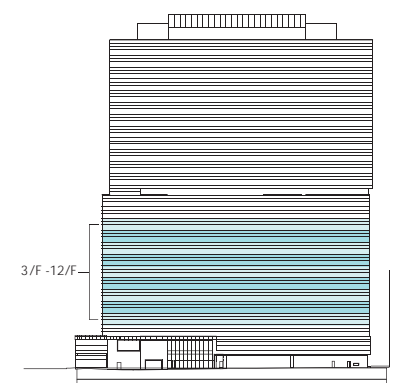
3rd -12th Floor Area Schedule (Tower B)

OFFICE	AREA (sq.ft)	Gross Floor Area	Saleable Area	Unit Covered Area	Apportioned Share Of Common Area
OFFICE A		3,616	2,551	2,551	1,065
OFFICE B		1,589	1,081	1,081	508
OFFICE C		1,535	1,044	1,044	491
OFFICE D		1,579	1,074	1,074	505
OFFICE E		1,453	988	988	465
OFFICE F		1,311	892	892	419

3rd -12th Floor Area Schedule (Tower A)

OFFICE	AREA (sq.ft)	Gross Floor Area	Saleable Area	Unit Covered Area	Apportioned Share Of Common Area
OFFICE A		3,652	2,557	2,557	1,095
OFFICE B		1,779	1,210	1,210	569
OFFICE C		1,553	1,056	1,056	497
OFFICE D		1,533	1,043	1,043	490
OFFICE E		1,458	992	992	466
OFFICE F		1,311	892	892	419

Excluding 4/F, 13/F, 14/F and 24/F 不設 4, 13, 14 及 24 樓  
 The internal areas of units on upper floors are in general slightly larger than lower floors due to possible reduced thickness of structural walls on those floors.  
 層數較高單位由於結構牆較低層單位稍薄，因而室內空間或會稍為增多。  
 All given information on this brochure is for reference only and the plan is subject to final Government approved plans and documentation.  
 本售樓書所提供的資料僅供參考，一切內容均以政府最後批准圖則及法律文件為準。

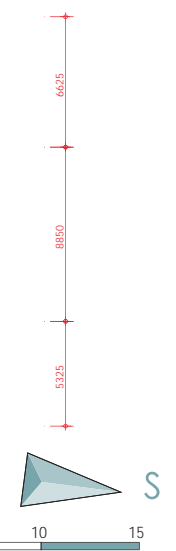
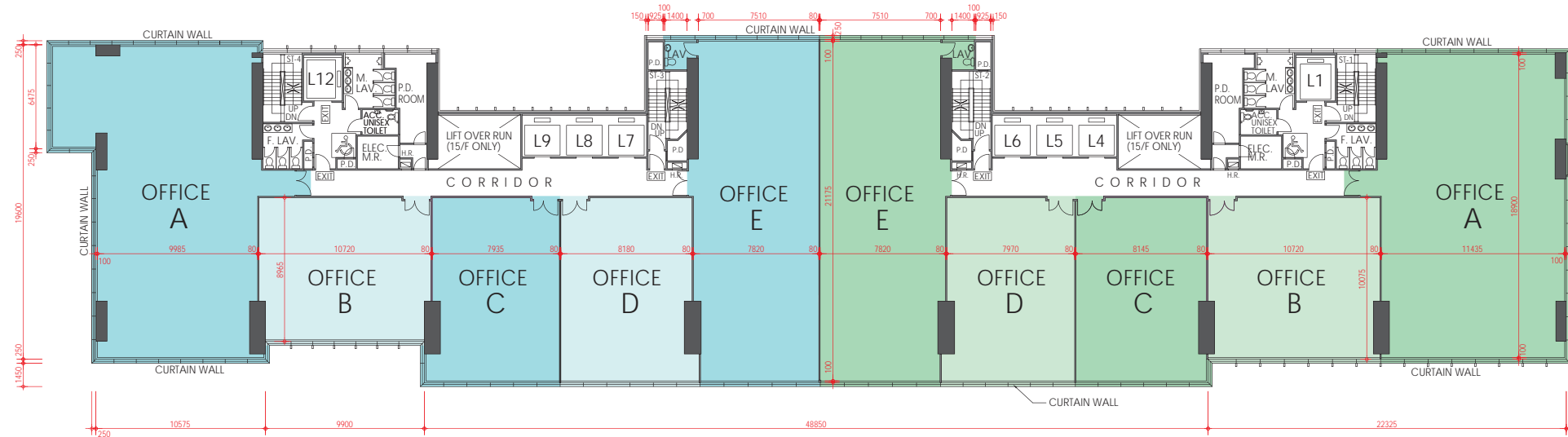


# 15<sup>th</sup> -16<sup>th</sup> FLOOR PLAN



## TOWER B

## TOWER A



15<sup>th</sup> -16<sup>th</sup> Floor Area Schedule (Tower B)

OFFICE	AREA (sq.ft)	Gross Floor Area	Saleable Area	Unit Covered Area	Apportioned Share Of Common Area
OFFICE A		3,616	2,551	2,551	1,065
OFFICE B		1,589	1,081	1,081	508
OFFICE C		1,535	1,044	1,044	491
OFFICE D		1,578	1,073	1,073	505
OFFICE E		2,765	1,916	1,916	849

15<sup>th</sup> -16<sup>th</sup> Floor Area Schedule (Tower A)

OFFICE	AREA (sq.ft)	Gross Floor Area	Saleable Area	Unit Covered Area	Apportioned Share Of Common Area
OFFICE A		3,652	2,557	2,557	1,095
OFFICE B		1,779	1,210	1,210	569
OFFICE C		1,553	1,056	1,056	497
OFFICE D		1,533	1,043	1,043	490
OFFICE E		2,769	1,920	1,920	849

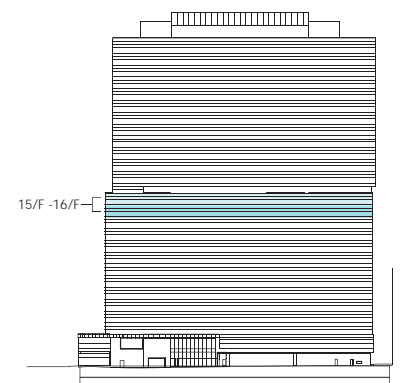
Excluding 4/F, 13/F, 14/F and 24/F 不設 4, 13, 14 及 24 樓

The internal areas of units on upper floors are in general slightly larger than lower floors due to possible reduced thickness of structural walls on those floors.

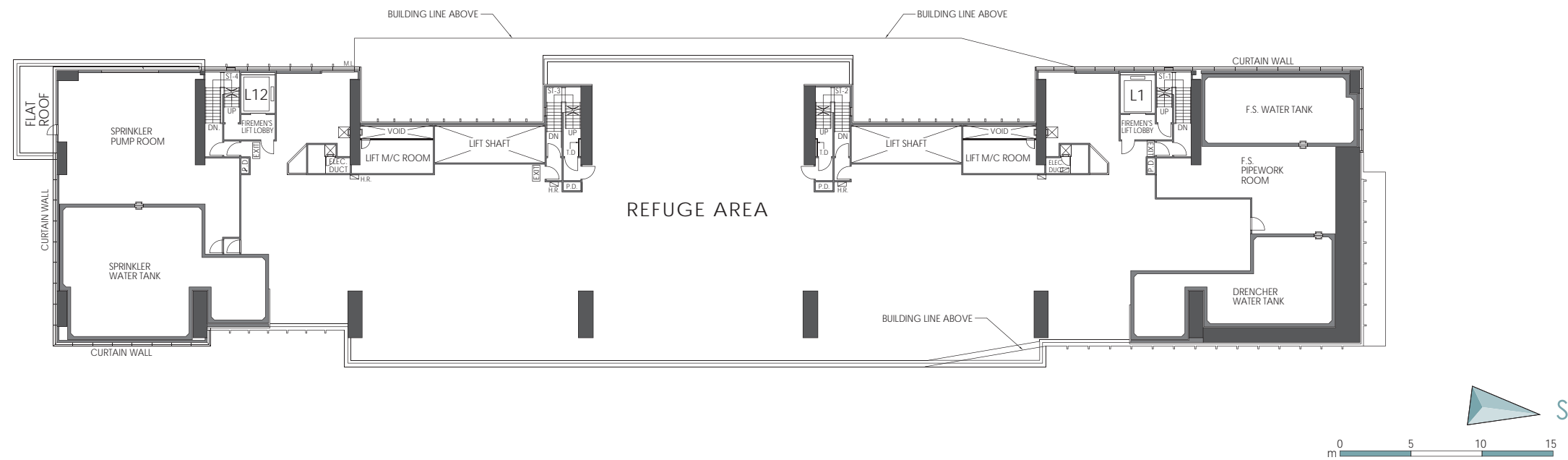
層數較高單位由於結構牆較低層單位稍薄，因而室內空間或會稍為增多。

All given information on this brochure is for reference only and the plan is subject to final Government approved plans and documentation.

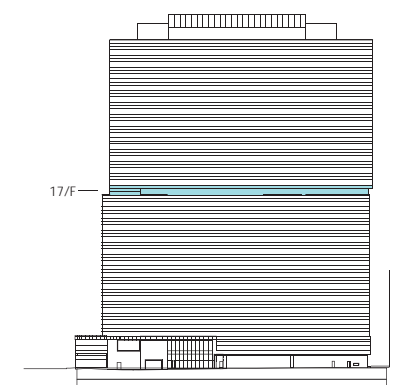
本售樓書所提供的資料僅供參考，一切內容均以政府最後批准圖則及法律文件為準。



# 17<sup>th</sup> FLOOR PLAN (REFUGE FLOOR)

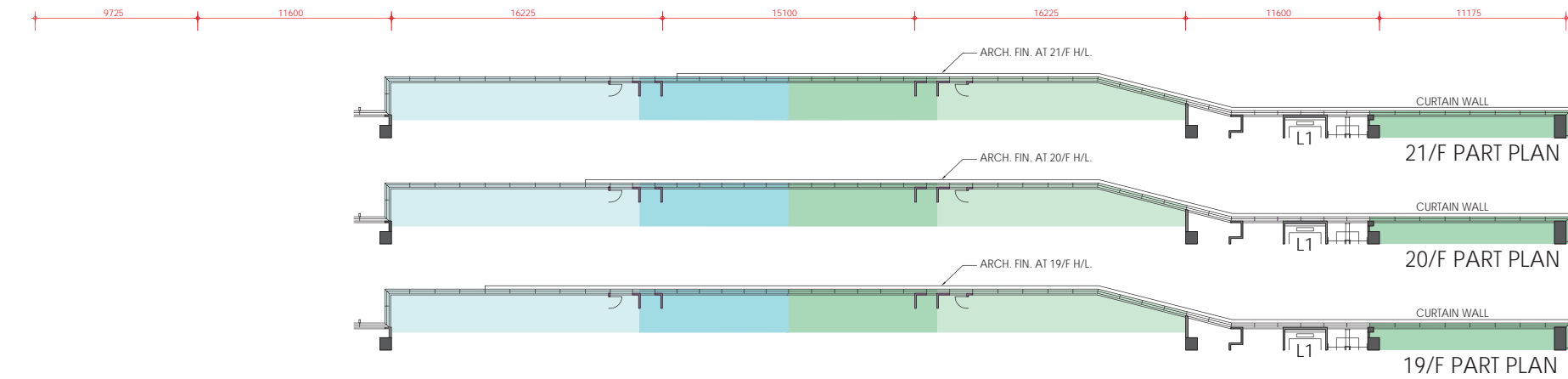


Excluding 4/F, 13/F, 14/F and 24/F 不設 4, 13, 14 及 24 樓  
 The internal areas of units on upper floors are in general slightly larger than lower floors due to possible reduced thickness of structural walls on those floors.  
 層數較高單位由於結構牆較低層單位稍薄，因而室內空間或會稍為增多。  
 All given information on this brochure is for reference only and the plan is subject to final Government approved plans and documentation.  
 本售樓書所提供的資料僅供參考，一切內容均以政府最後批准圖則及法律文件為準。



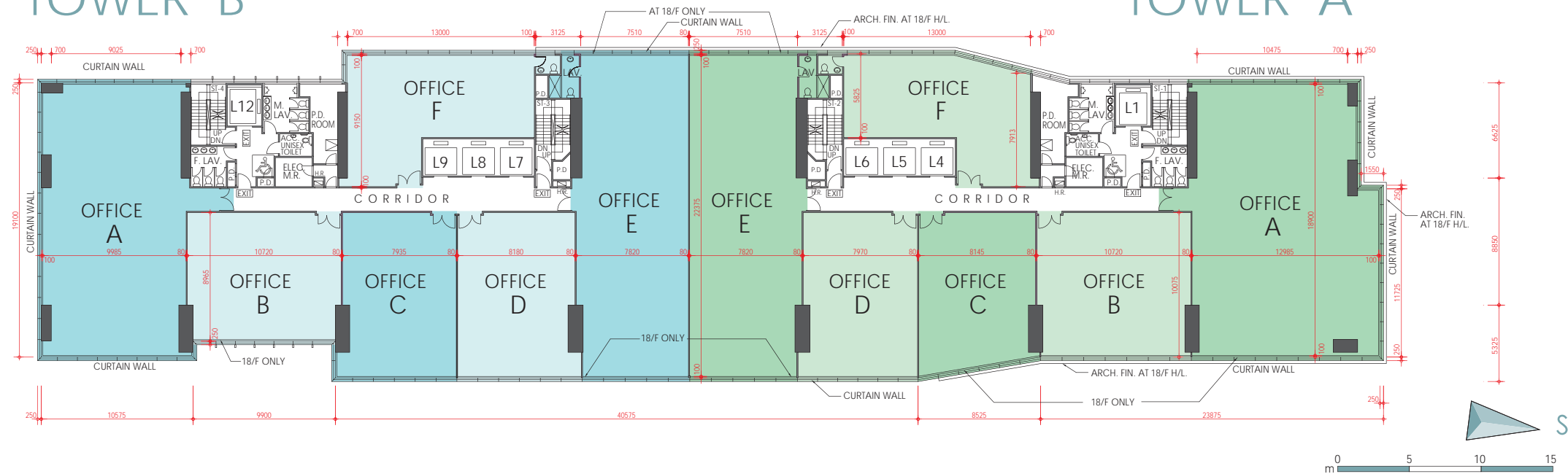


# 18<sup>th</sup> -21<sup>st</sup> FLOOR PLAN



## TOWER B

## TOWER A

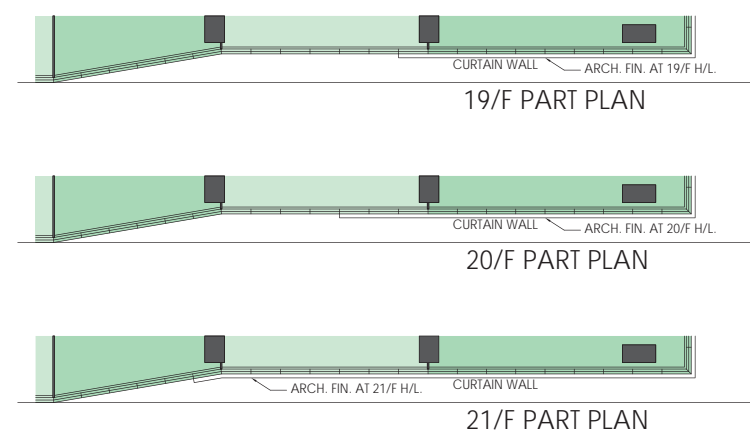


18<sup>th</sup> -21<sup>st</sup> Floor Area Schedule (Tower B)

AREA (sq.ft)	Gross Floor Area	Saleable Area	Unit Covered Area	Apportioned Share Of Common Area
OFFICE A	3,222	2,283	2,283	939
OFFICE B	1,589	1,081	1,081	508
OFFICE C	1,535	1,044	1,044	491
OFFICE D	1,578	1,073	1,073	505
OFFICE E	2,930	2,029	2,029	901
OFFICE F	1,703	1,158	1,158	545

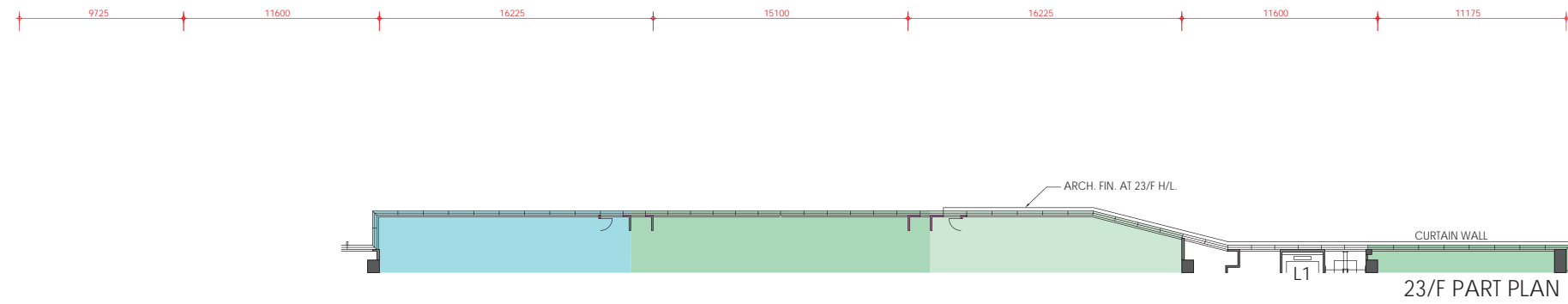
18<sup>th</sup> -21<sup>st</sup> Floor Area Schedule (Tower A)

AREA (sq.ft)	Gross Floor Area	Saleable Area	Unit Covered Area	Apportioned Share Of Common Area
OFFICE A	3,960	2,766	2,766	1,194
OFFICE B	1,770	1,204	1,204	566
OFFICE C	1,464	996	996	468
OFFICE D	1,533	1,043	1,043	490
OFFICE E	2,936	2,033	2,033	903
OFFICE F	1,635	1,112	1,112	523

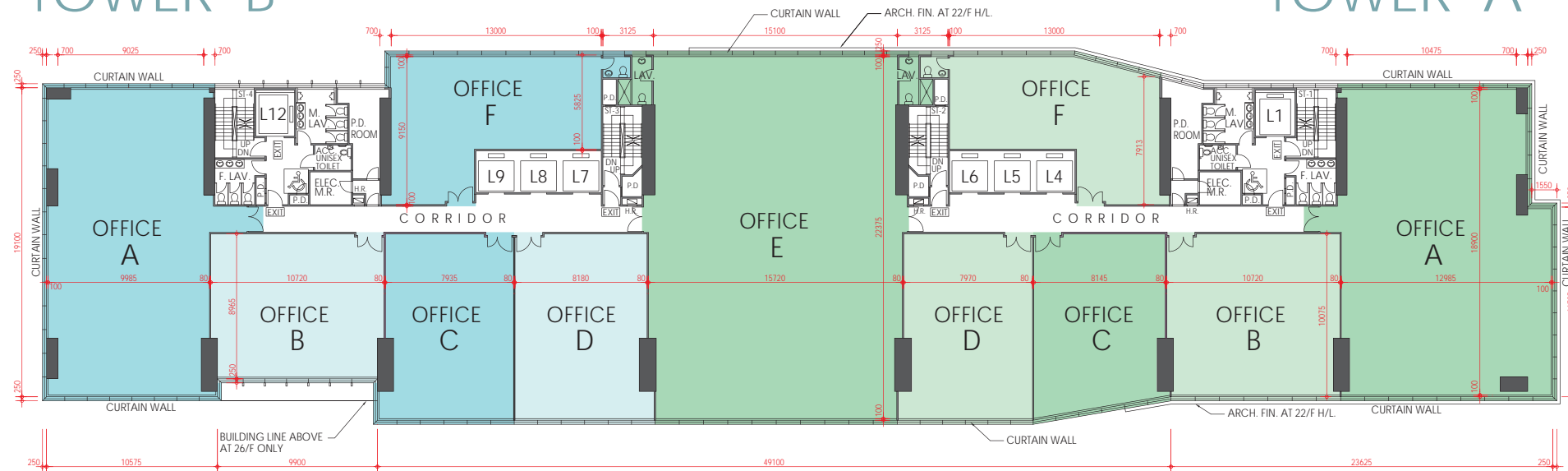


Excluding 4/F, 13/F, 14/F and 24/F 不設 4, 13, 14 及 24 樓  
 The internal areas of units on upper floors are in general slightly larger than lower floors due to possible reduced thickness of structural walls on those floors.  
 層數較高單位由於結構牆較低層單位稍薄，因而室內空間或會稍為增多。  
 All given information on this brochure is for reference only and the plan is subject to final Government approved plans and documentation.  
 本售樓書所提供的資料僅供參考，一切內容均以政府最後批准圖則及法律文件為準。

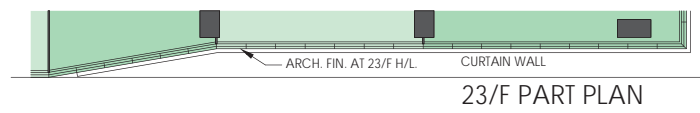
# 22nd -23rd FLOOR PLAN



## TOWER B



## TOWER A

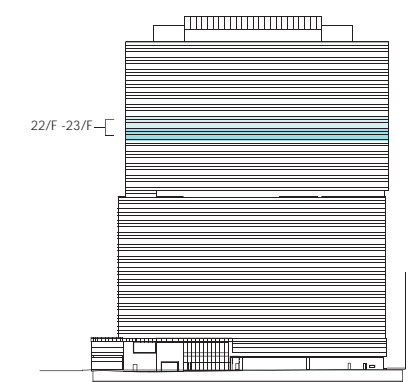
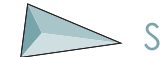


22nd -23rd Floor Area Schedule (Tower B)

AREA (sq.ft)	Gross Floor Area	Saleable Area	Unit Covered Area	Apportioned Share Of Common Area
OFFICE A	3,222	2,283	2,283	939
OFFICE B	1,589	1,081	1,081	508
OFFICE C	1,535	1,044	1,044	491
OFFICE D	1,578	1,073	1,073	505
OFFICE F	1,703	1,158	1,158	545

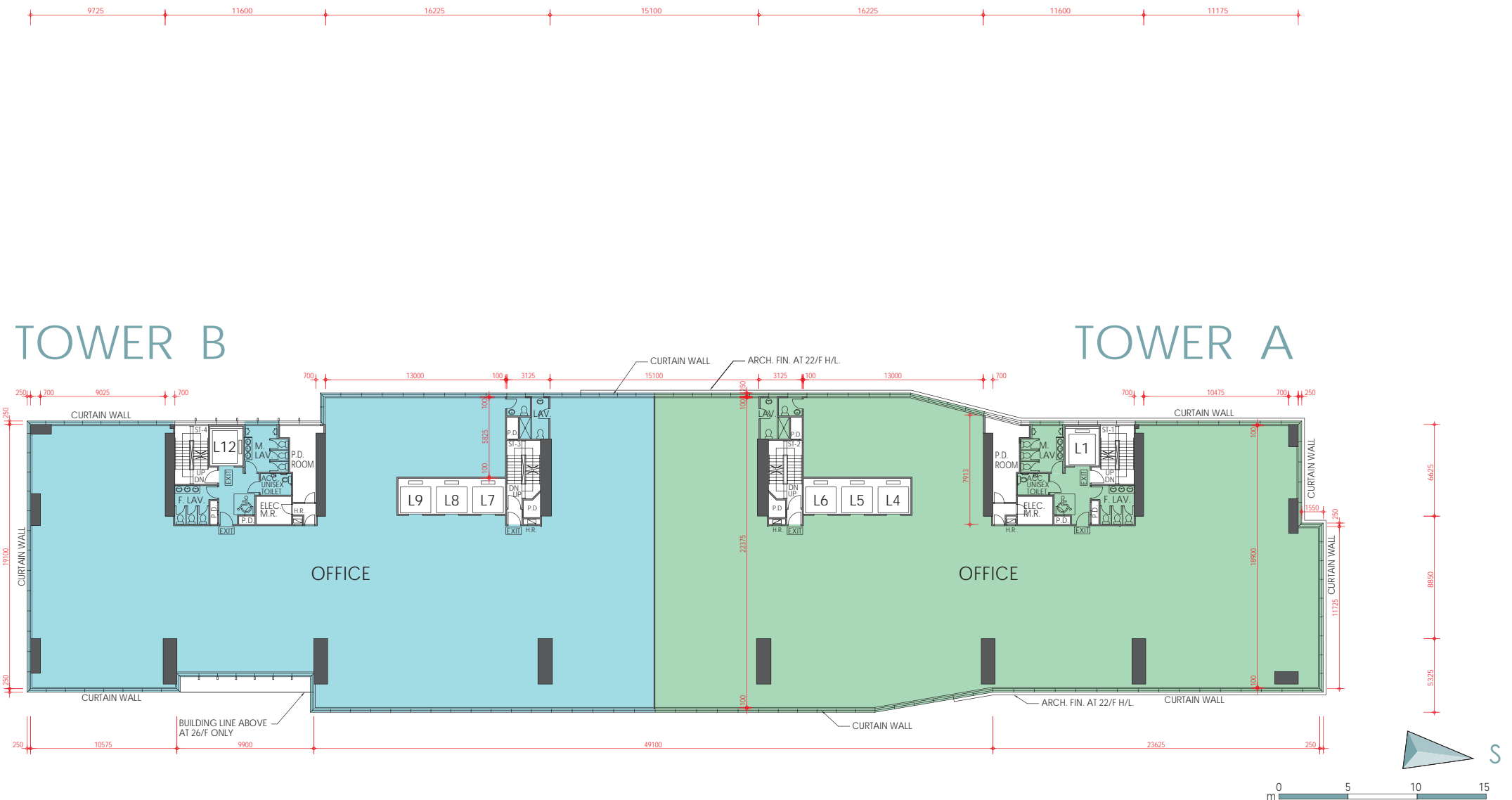
22nd -23rd Floor Area Schedule (Tower A)

AREA (sq.ft)	Gross Floor Area	Saleable Area	Unit Covered Area	Apportioned Share Of Common Area
OFFICE A	3,960	2,766	2,766	1,194
OFFICE B	1,770	1,204	1,204	566
OFFICE C	1,464	996	996	468
OFFICE D	1,533	1,043	1,043	490
OFFICE E	5,866	4,062	4,062	1,804
OFFICE F	1,635	1,112	1,112	523



Excluding 4/F, 13/F, 14/F and 24/F 不設 4, 13, 14 及 24 樓  
 The internal areas of units on upper floors are in general slightly larger than lower floors due to possible reduced thickness of structural walls on those floors.  
 層數較高單位由於結構牆較低層單位稍薄，因而室內空間或會稍為增多。  
 All given information on this brochure is for reference only and the plan is subject to final Government approved plans and documentation.  
 本售樓書所提供的資料僅供參考，一切內容均以政府最後批准圖則及法律文件為準。

# 25<sup>th</sup> -26<sup>th</sup> FLOOR PLAN



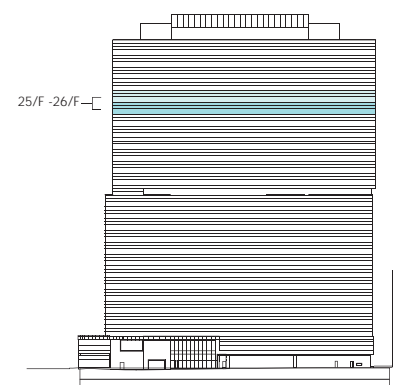
25<sup>th</sup> -26<sup>th</sup> Floor Area Schedule (Tower B)

AREA (sq.ft)	Gross Floor Area	Saleable Area	Unit Covered Area	Apportioned Share Of Common Area
OFFICE	12,612	9,543	9,543	3,069

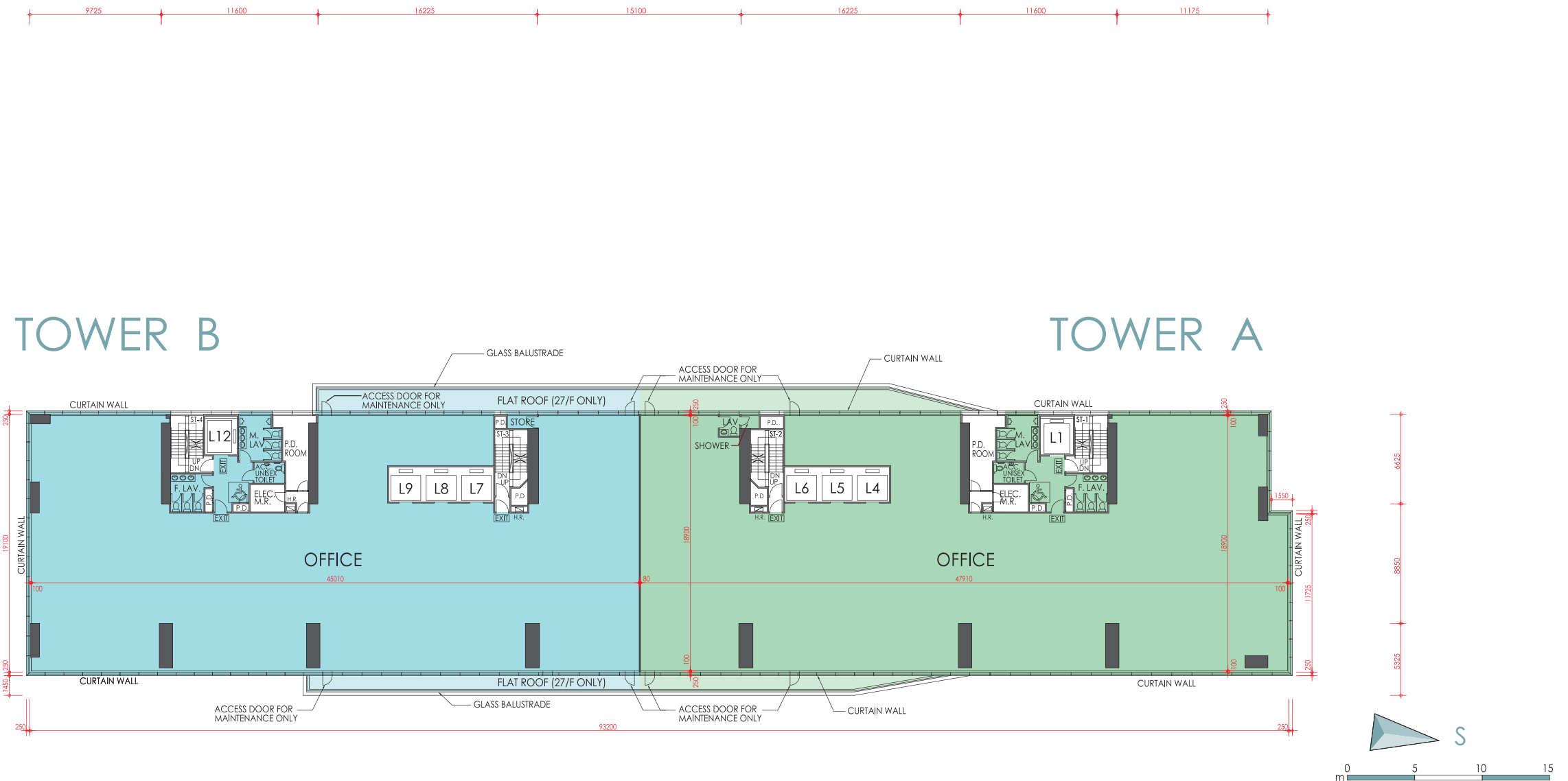
25<sup>th</sup> -26<sup>th</sup> Floor Area Schedule (Tower A)

AREA (sq.ft)	Gross Floor Area	Saleable Area	Unit Covered Area	Apportioned Share Of Common Area
OFFICE	13,242	10,020	10,020	3,222

Excluding 4/F, 13/F, 14/F and 24/F 不設 4, 13, 14 及 24 樓  
 The internal areas of units on upper floors are in general slightly larger than lower floors due to possible reduced thickness of structural walls on those floors.  
 層數較高單位由於結構牆較低層單位稍薄，因而室內空間或會稍為增多。  
 All given information on this brochure is for reference only and the plan is subject to final Government approved plans and documentation.  
 本售樓書所提供的資料僅供參考，一切內容均以政府最後批准圖則及法律文件為準。



# 27th - 30th FLOOR PLAN



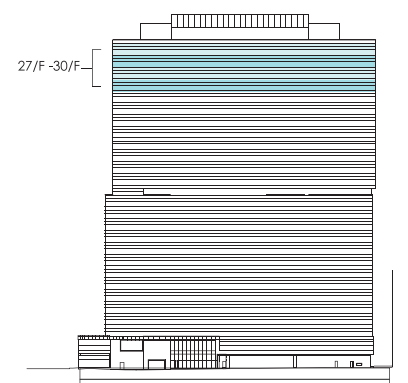
27th -30th Floor Area Schedule (Tower B)

AREA (sq.ft)	Gross Floor Area	Saleable Area	Unit Covered Area	Apportioned Share Of Common Area	Flat Roof at 27/F Only
OFFICE	11,724	8,740	8,740	2,984	667

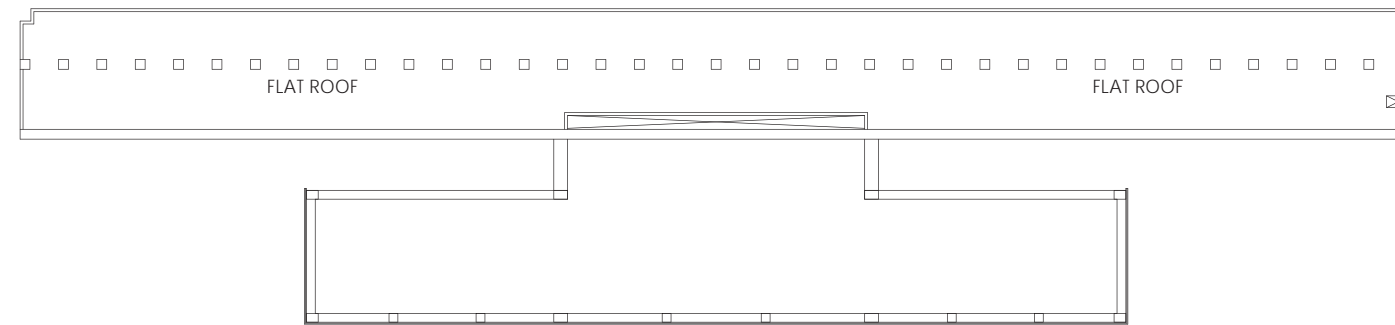
27th -30th Floor Area Schedule (Tower A)

AREA (sq.ft)	Gross Floor Area	Saleable Area	Unit Covered Area	Apportioned Share Of Common Area	Flat Roof at 27/F Only
OFFICE	12,358	9,213	9,213	3,145	567

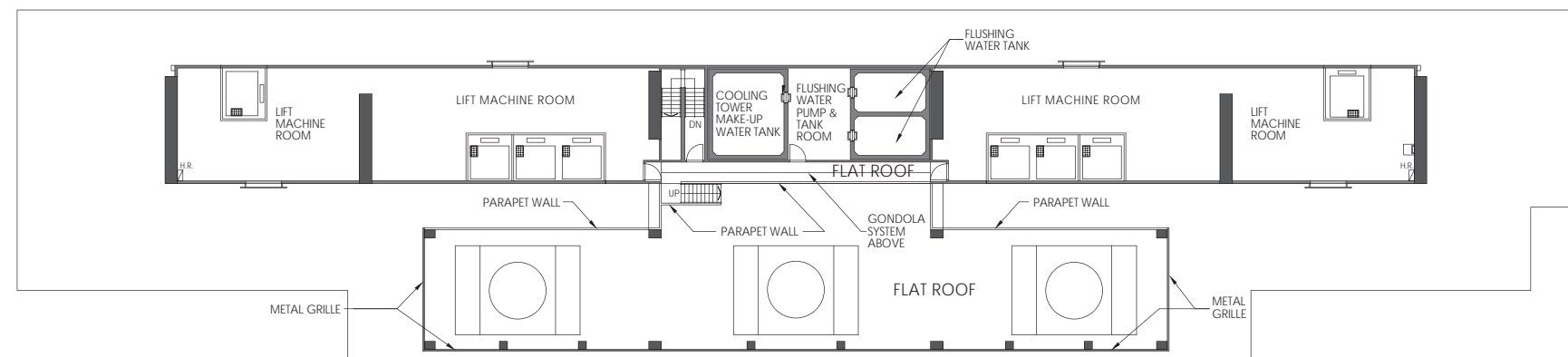
Excluding 4/F, 13/F, 14/F and 24/F 不設 4、13、14 及 24 樓  
 The internal areas of units on upper floors are in general slightly larger than lower floors due to possible reduced thickness of structural walls on those floors.  
 層數較高單位由於結構牆較低層單位稍薄，因而室內空間或會稍為增多。  
 All given information on this brochure is for reference only and the plan is subject to final Government approved plans and documentation.  
 本售樓書所提供的資料僅供參考，一切內容均以政府最後批准圖則及法律文件為準。



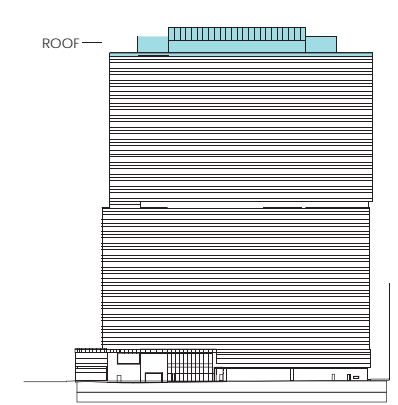
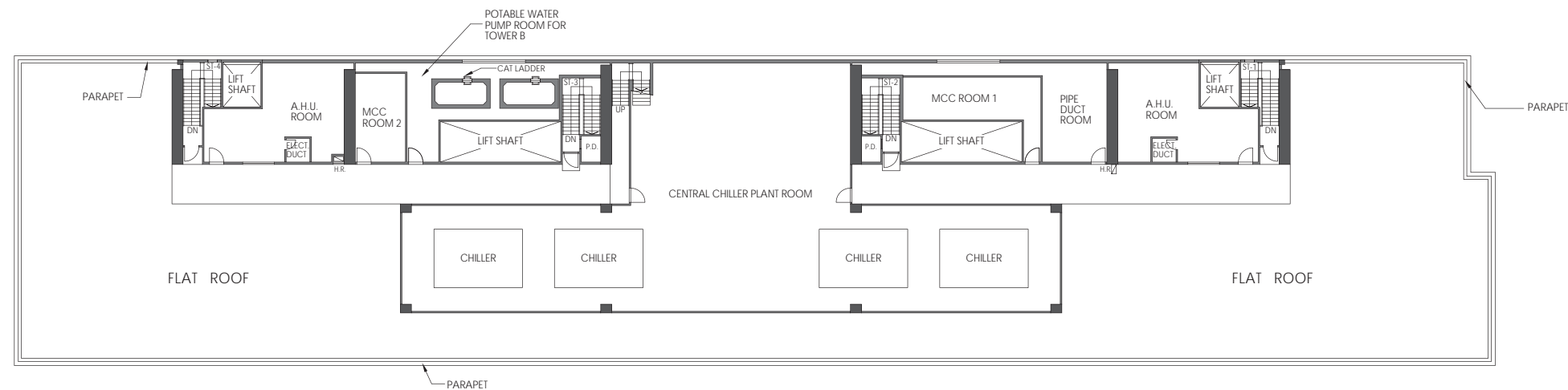
# ROOF PLAN



TOP ROOF PLAN



UPPER ROOF PLAN



Excluding 4/F, 13/F, 14/F and 24/F 不設 4, 13, 14 及 24 樓  
 The internal areas of units on upper floors are in general slightly larger than lower floors due to possible reduced thickness of structural walls on those floors.  
 層數較高單位由於結構牆較低層單位稍薄，因而室內空間或會稍為增多。  
 All given information on this brochure is for reference only and the plan is subject to final Government approved plans and documentation.  
 本售樓書所提供的資料僅供參考，一切內容均以政府最後批准圖則及法律文件為準。

