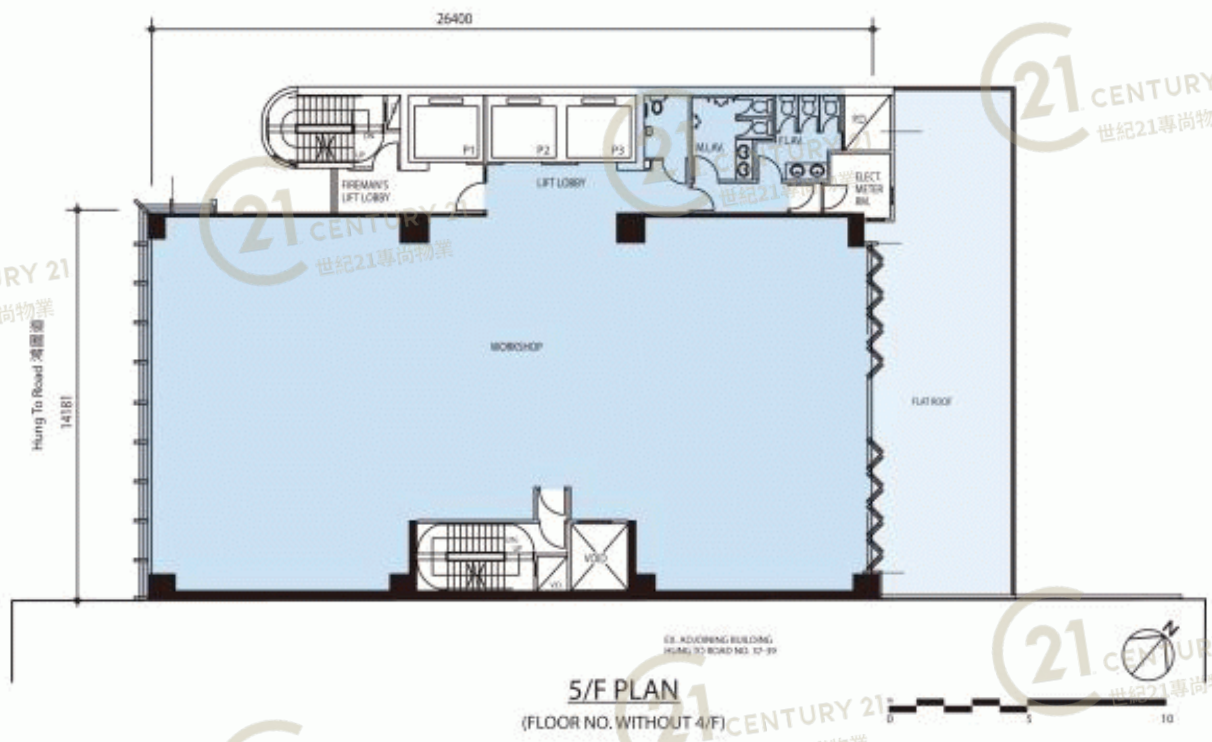


平面圖

Floor Plan

5/F Floor Plan



天星中心 Fun Tower

NOT TO SCALE, FOR IDENTIFICATION PURPOSE ONLY

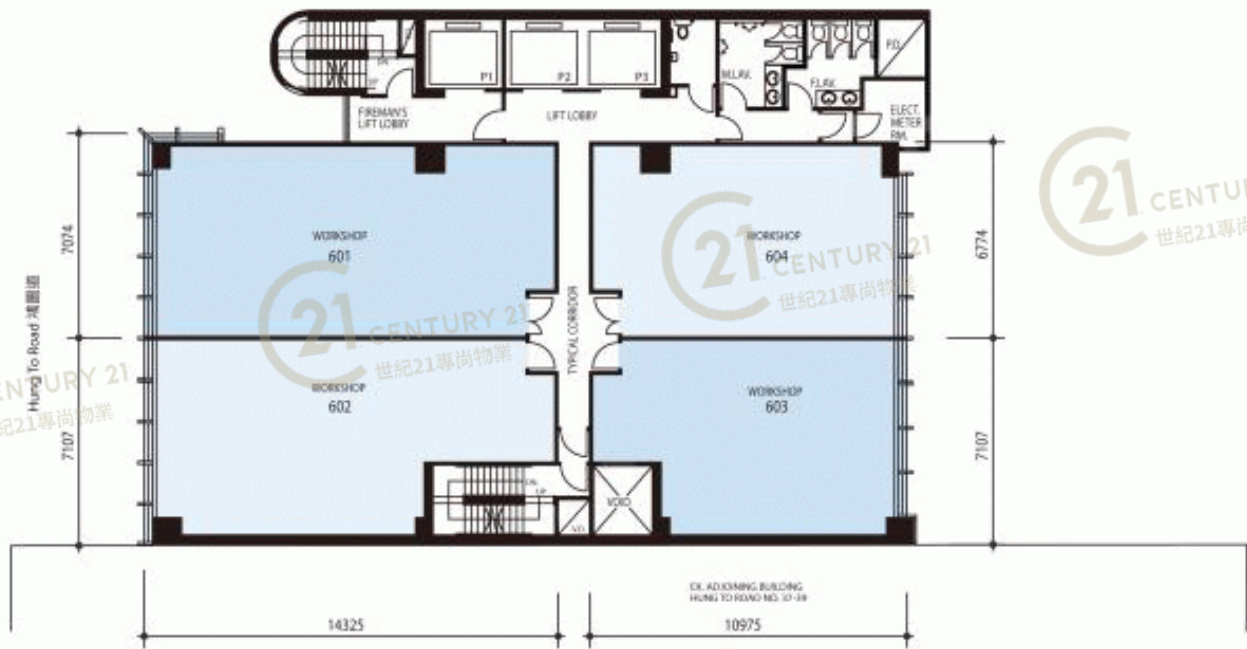
圖中所有數據比例，一概只作參考之用



平面圖

Floor Plan

6/F Floor Plan



6/F PLAN

Unit 單位	Unit gross area (sq. ft) 單位建築面積(平方呎)	Unit saleable area (sq. ft) 單位實用面積(平方呎)
601	1,670	1,036
602	1,533	951
603	1,227	762
604	1,257	780

*Note: Saleable area of unit excluding typical lift lobby, corridor and toilet area. (6/F only)
備註：單位實用面積不包括標準電梯大堂、走廊及洗手間。(6/F only)



天星中心 Fun Tower

NOT TO SCALE, FOR IDENTIFICATION PURPOSE ONLY

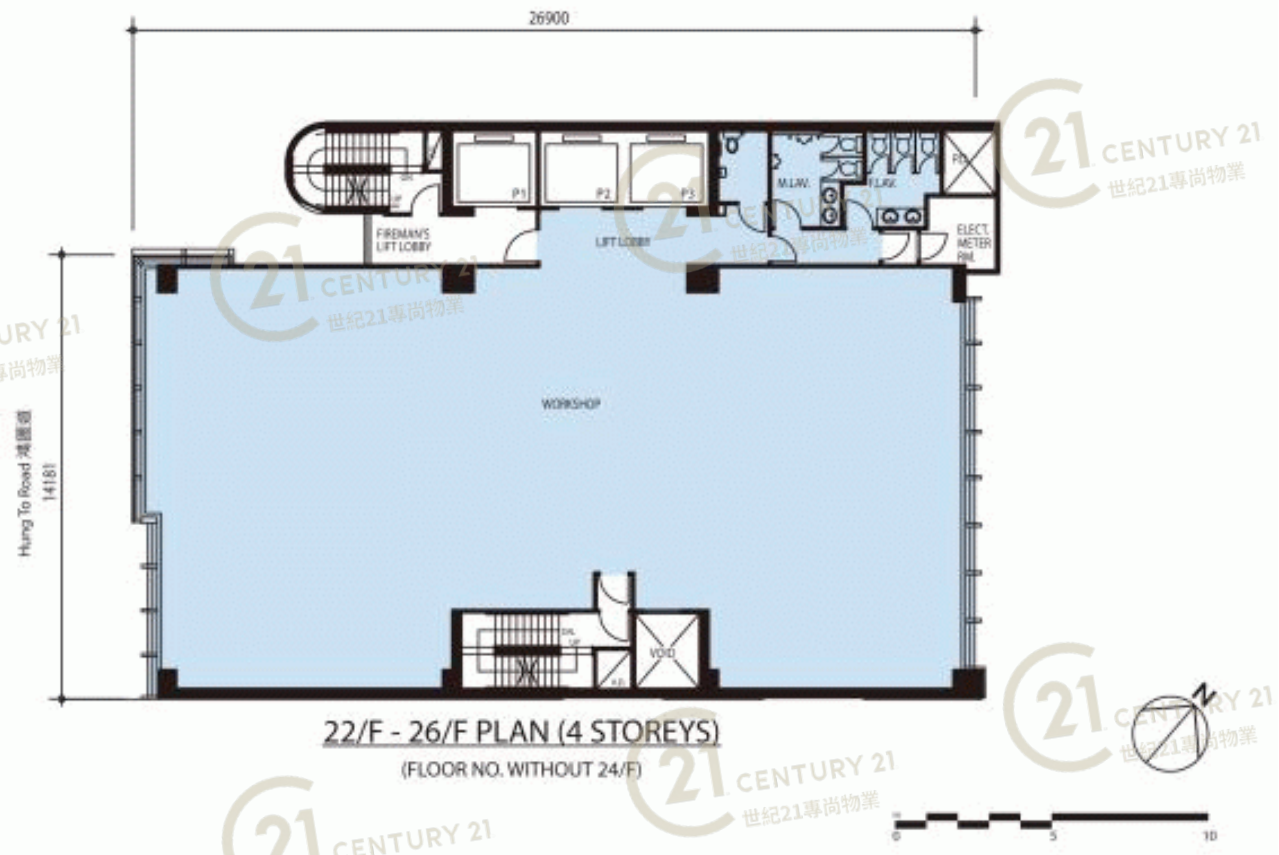
圖中所有數據比例，一概只作參考之用



平面圖

Floor Plan

22/F - 26/F Floor Plan (4 Storeys) floor no. without 24/F



22/F - 26/F PLAN (4 STOREYS)
(FLOOR NO. WITHOUT 24/F)



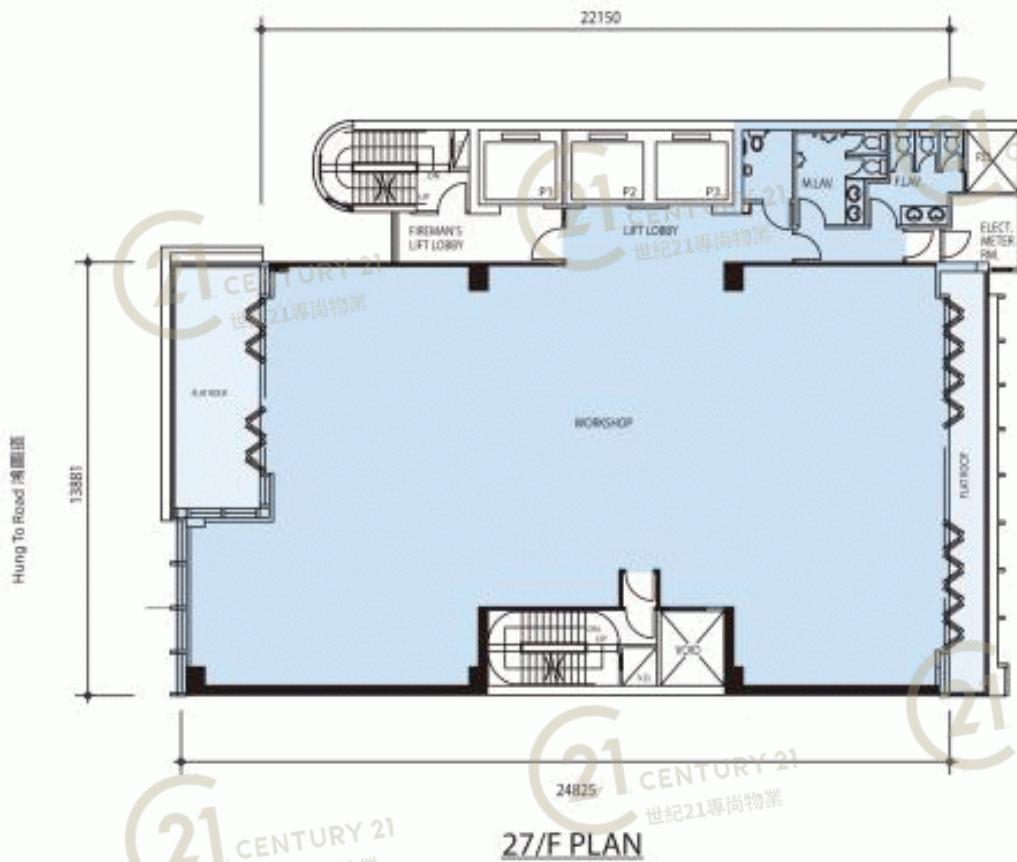
天星中心 Fun Tower

NOT TO SCALE, FOR IDENTIFICATION PURPOSE ONLY
圖中所有數據比例，一概只作參考之用

平面圖

Floor Plan

27/F Floor Plan



天星中心 Fun Tower

NOT TO SCALE, FOR IDENTIFICATION PURPOSE ONLY

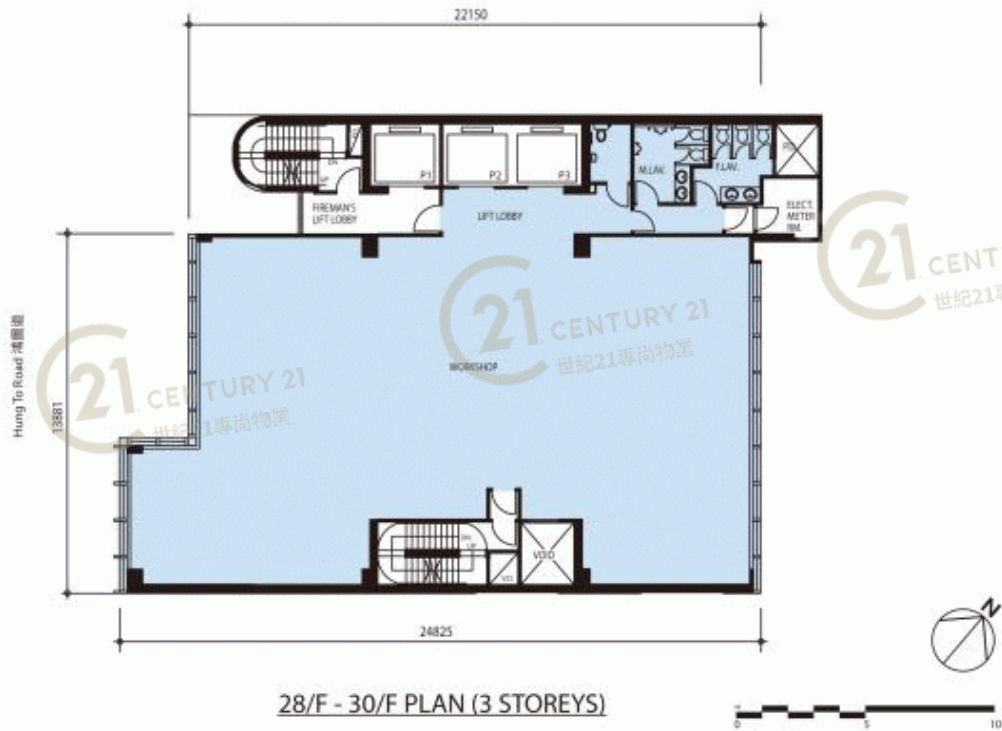
圖中所有數據比例，一概只作參考之用



平面圖

Floor Plan

28/F - 30/F Floor Plan (3 Storeys)



28/F - 30/F PLAN (3 STOREYS)



FLOOR 樓層	Whole floor gross area (sq. ft) 全層建築面積(平方呎)	Whole floor saleable area (sq. ft) 全層實用面積(平方呎)
22/F - 26/F (FLOOR NO. WITHOUT 24/F)	5,750	4,198
28/F - 30/F	5,042	3,680

*Notes: Saleable area of whole floor including typical lift lobby, corridor and toilet area.
備註：全層實用面積包括標準電梯大堂、走廊及洗手間。

Excluding 4/F, 13/F, 14/F, 24/F and 34/F 不設4樓、13樓、14樓、24樓及34樓
The internal area of the units on upper floors are in general slightly larger than lower floors due to a possible reduction in the thickness of structural walls on those floors. All given information in this brochure is for reference only and is subject to final Government approval of plans and documents.
本售樓書所提供的資料僅供參考，一切內容均以政府最後批准圖則及法律文件為準。



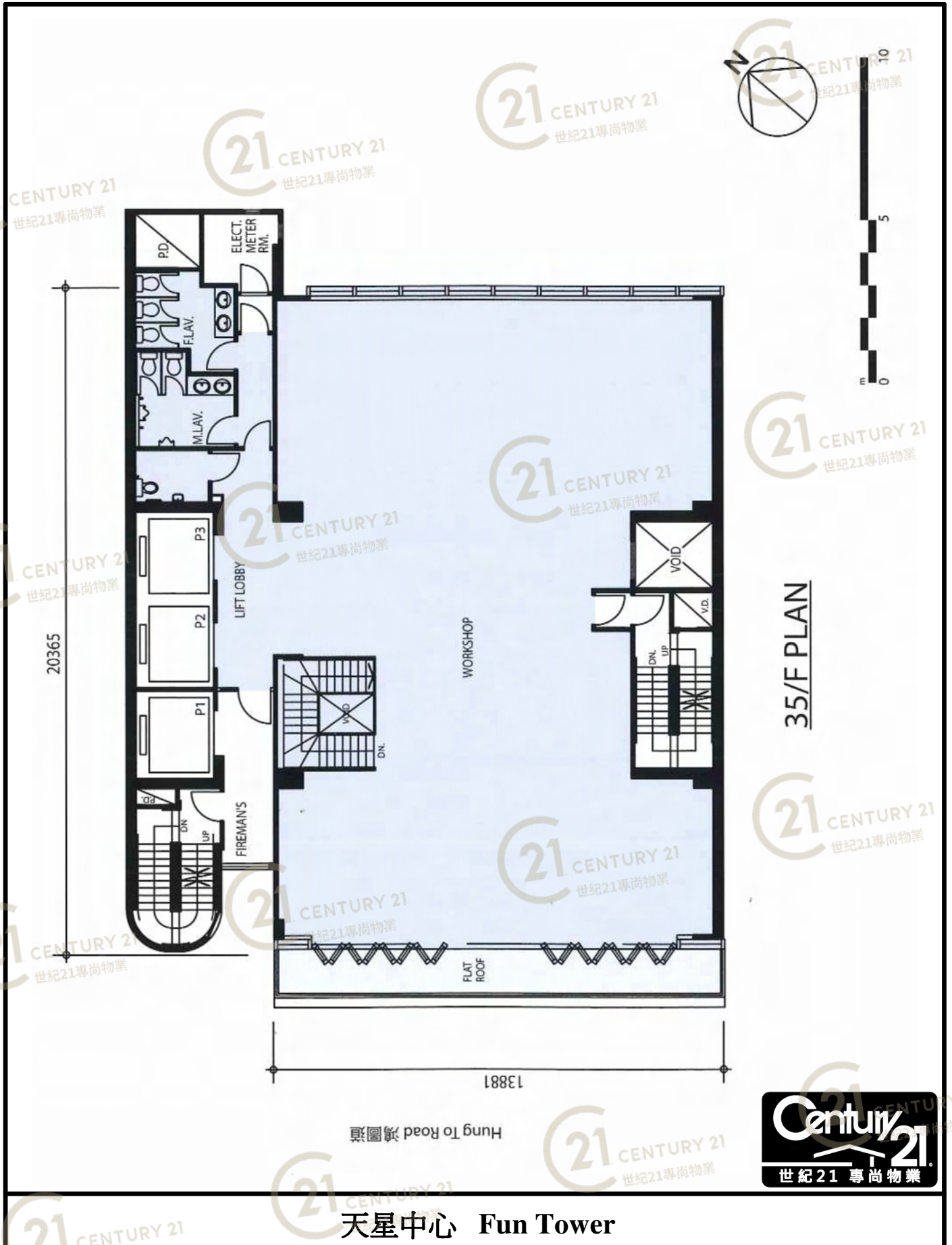
天星中心 Fun Tower

NOT TO SCALE, FOR IDENTIFICATION PURPOSE ONLY

圖中所有數據比例，一概只作參考之用

平面圖

Floor Plan



天星中心 Fun Tower

NOT TO SCALE, FOR IDENTIFICATION PURPOSE ONLY

圖中所有數據比例，一概只作參考之用