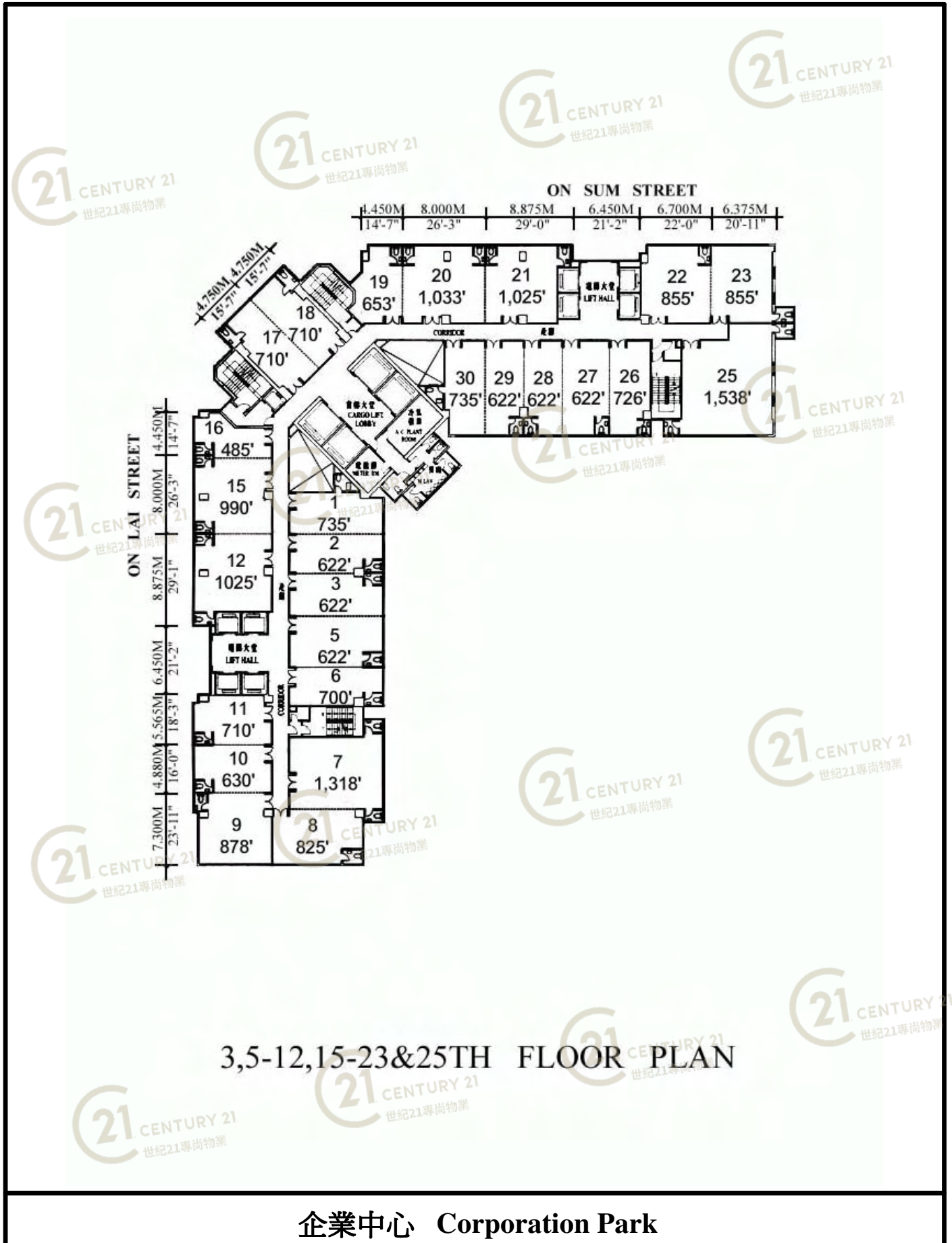


平面圖

Floor Plan

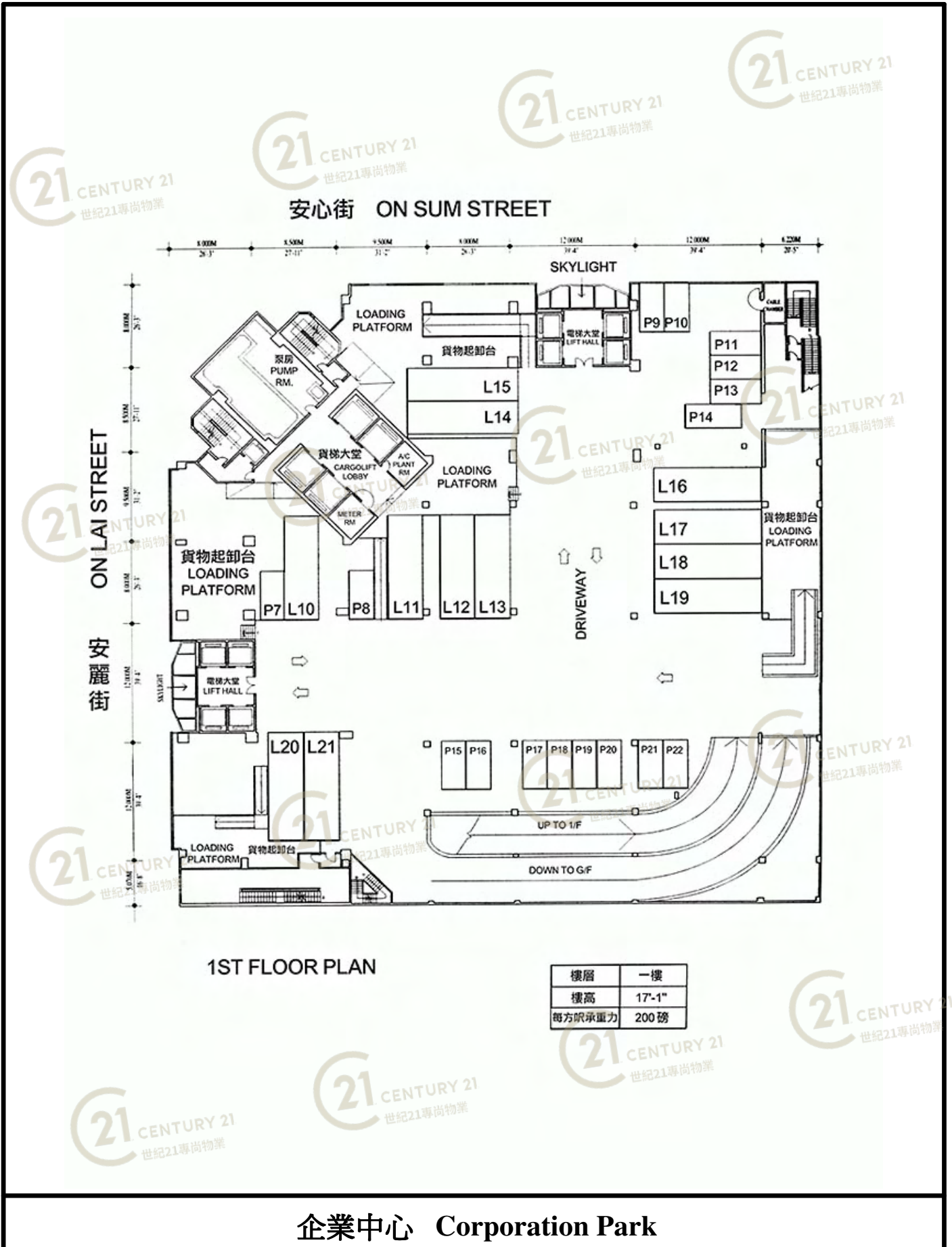


NOT TO SCALE, FOR IDENTIFICATION PURPOSE ONLY

圖中所有數據比例，一概只作參考之用

平面圖

Floor Plan

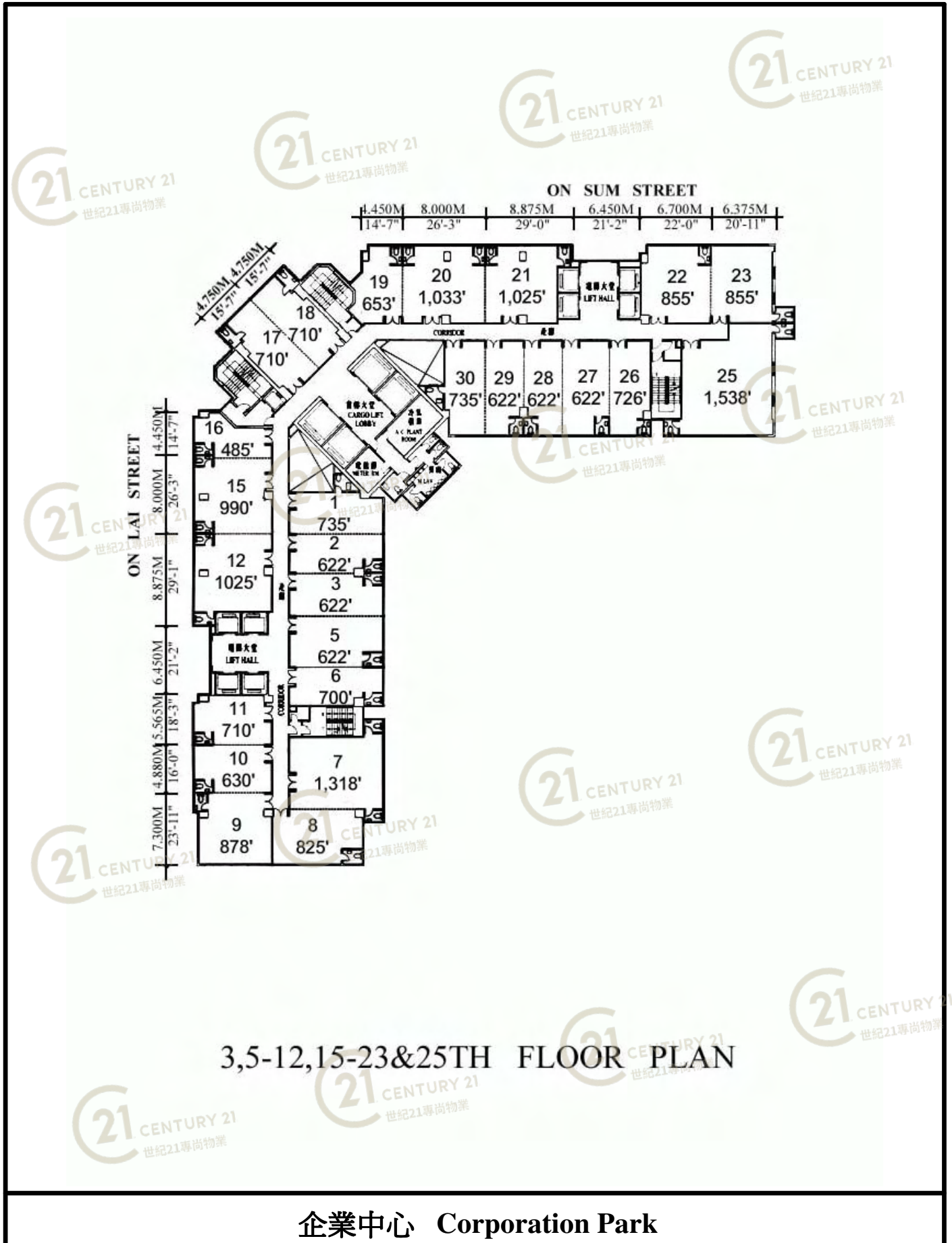


NOT TO SCALE, FOR IDENTIFICATION PURPOSE ONLY

圖中所有數據比例，一概只作參考之用

平面圖

Floor Plan



3,5-12,15-23&25TH FLOOR PLAN

企業中心 Corporation Park

NOT TO SCALE, FOR IDENTIFICATION PURPOSE ONLY

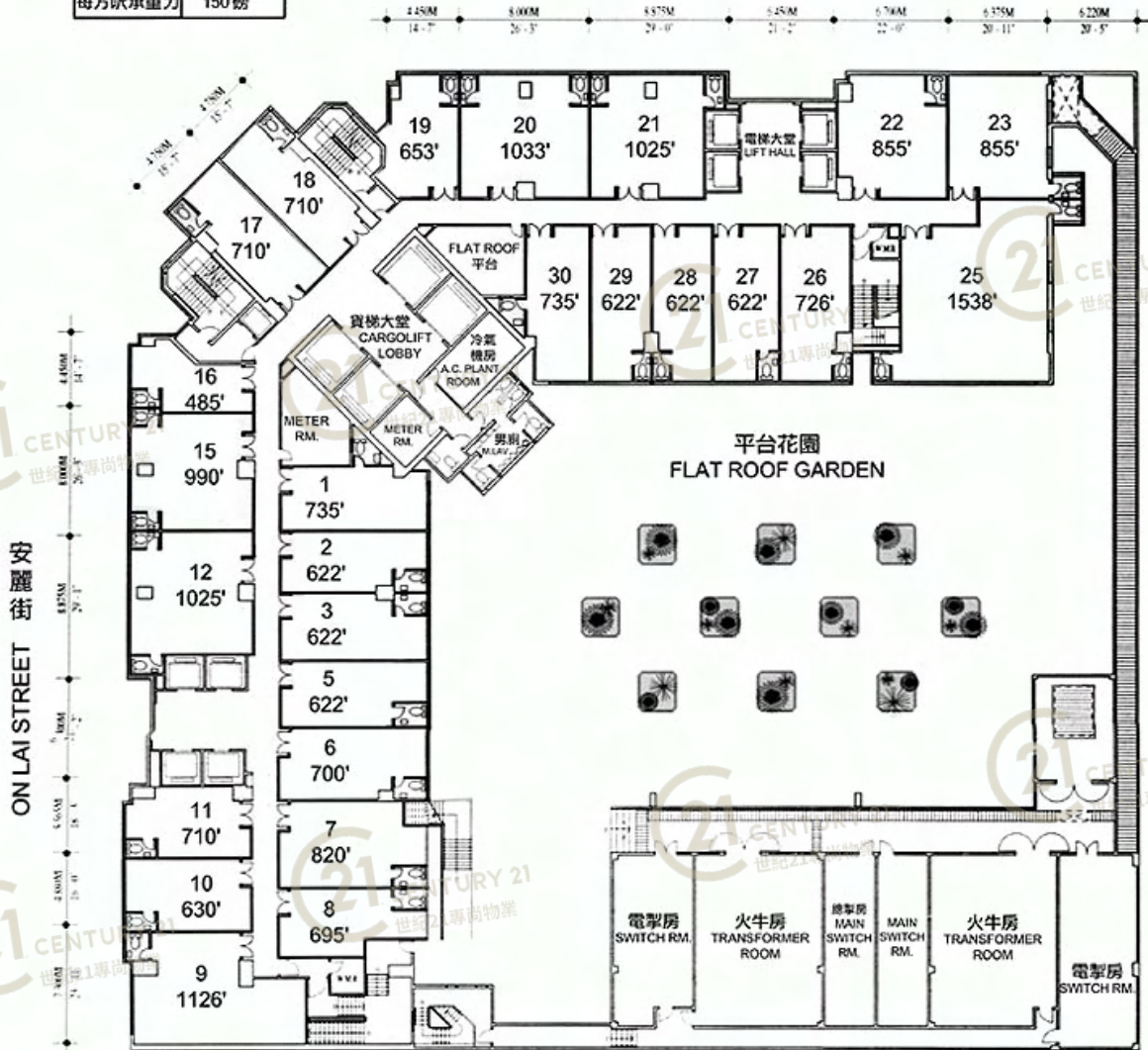
圖中所有數據比例，一概只作參考之用

平面圖

Floor Plan

樓層	二樓
樓高	13'-2"
每方呎承重力	150磅

安心街 ON SUM STREET



2ND FLOOR PLAN

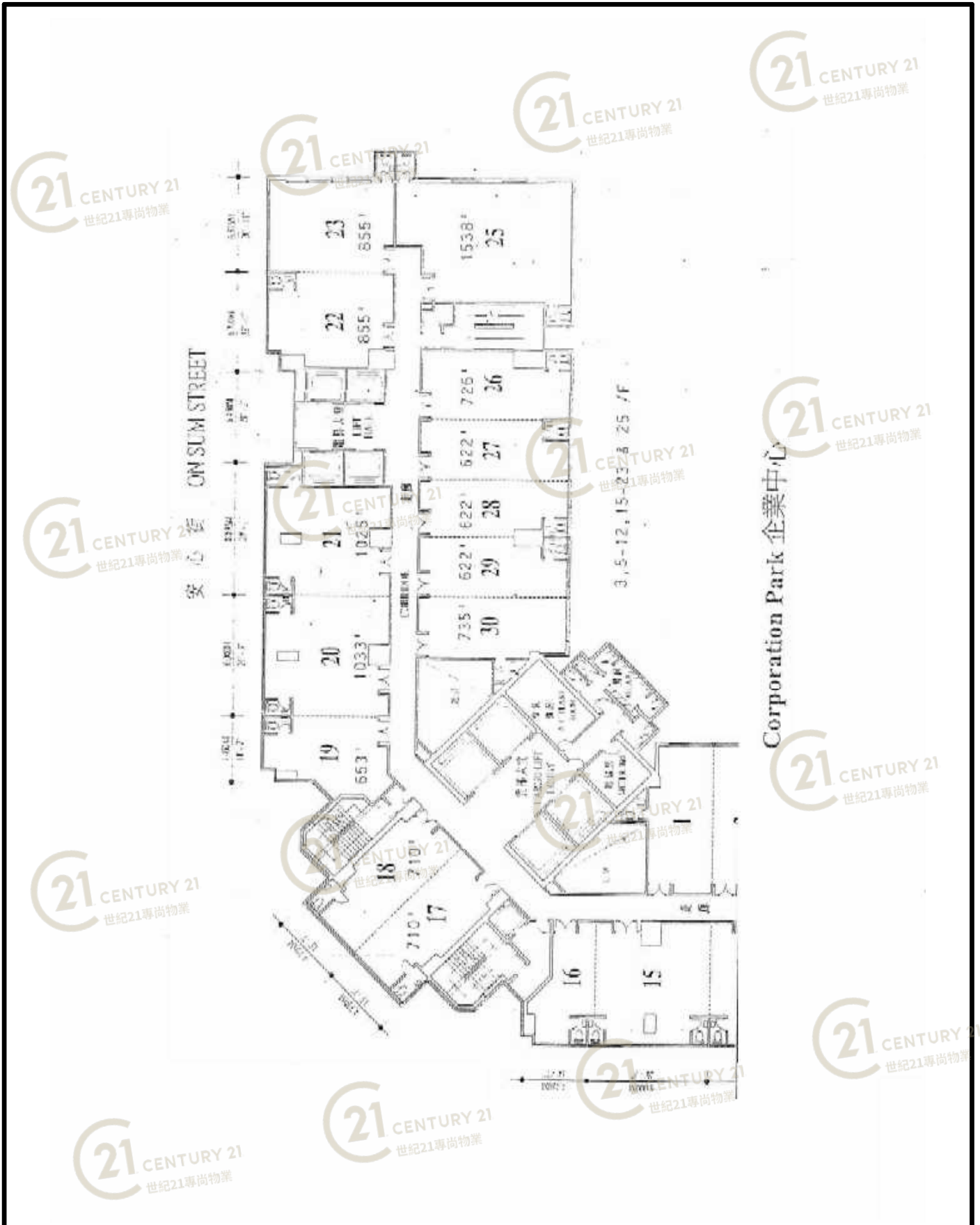
企業中心 Corporation Park

NOT TO SCALE, FOR IDENTIFICATION PURPOSE ONLY

圖中所有數據比例，一概只作參考之用

平面圖

Floor Plan



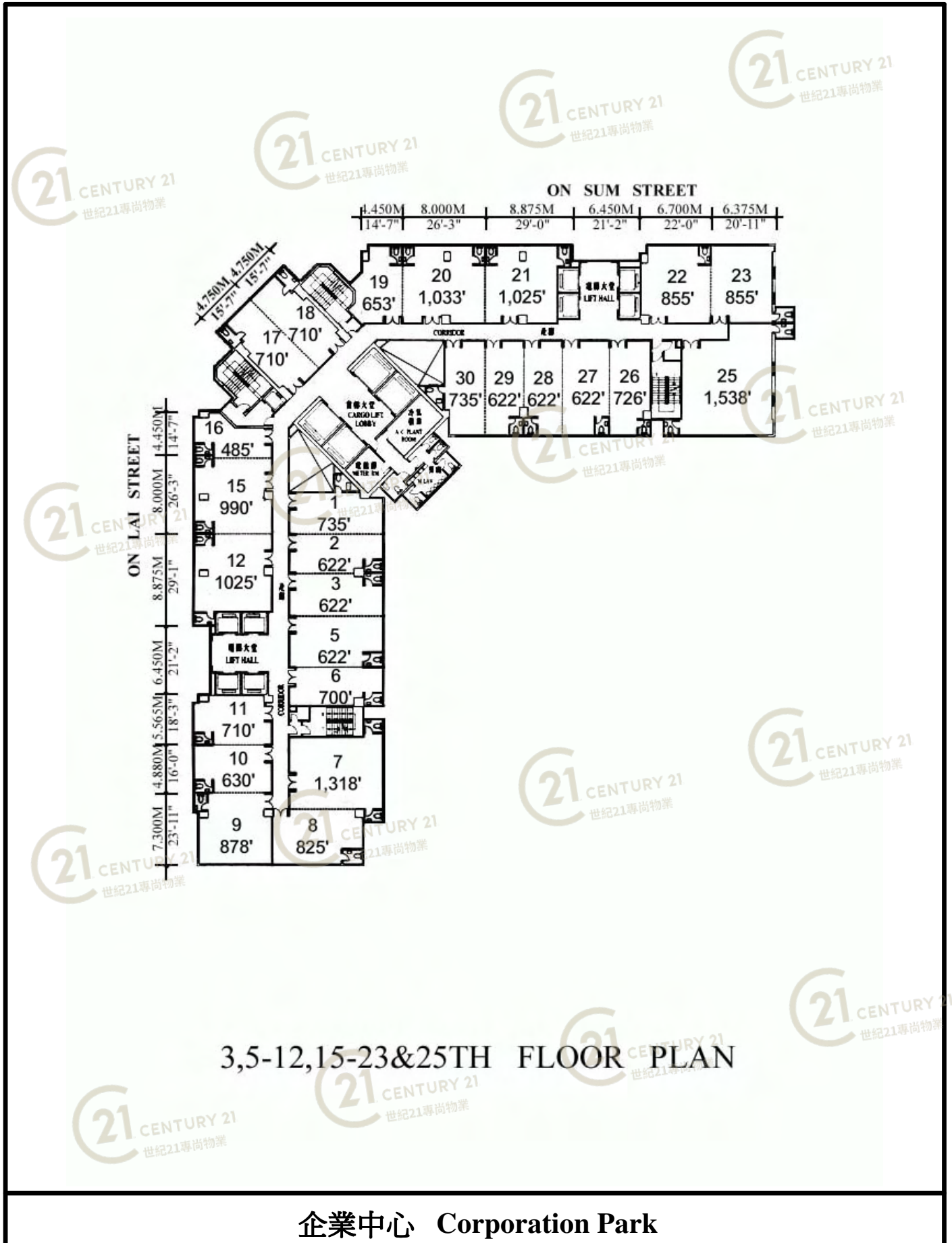
企業中心 Corporation Park

NOT TO SCALE, FOR IDENTIFICATION PURPOSE ONLY

圖中所有數據比例，一概只作參考之用

平面圖

Floor Plan



3,5-12,15-23&25TH FLOOR PLAN

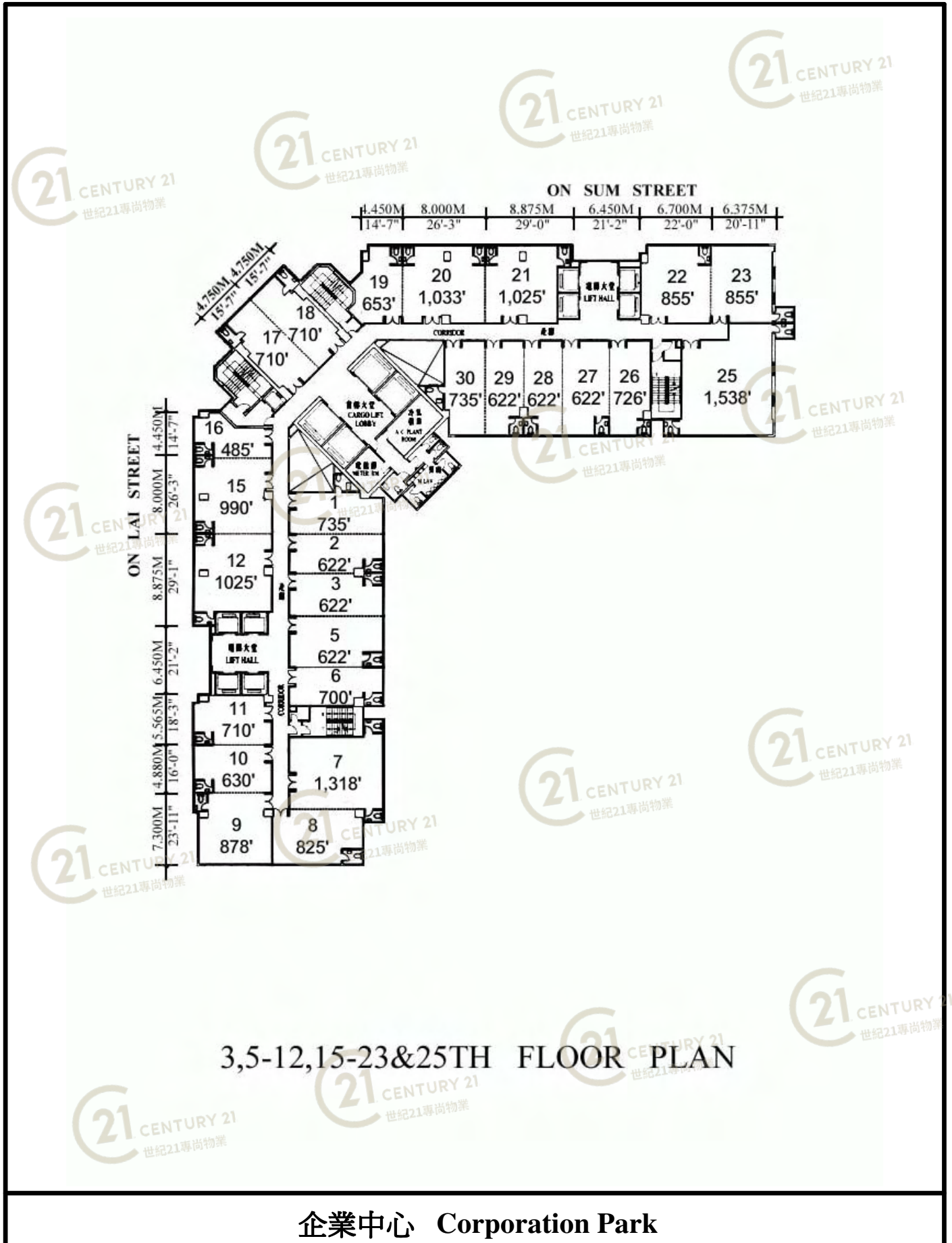
企業中心 Corporation Park

NOT TO SCALE, FOR IDENTIFICATION PURPOSE ONLY

圖中所有數據比例，一概只作參考之用

平面圖

Floor Plan



3,5-12,15-23&25TH FLOOR PLAN

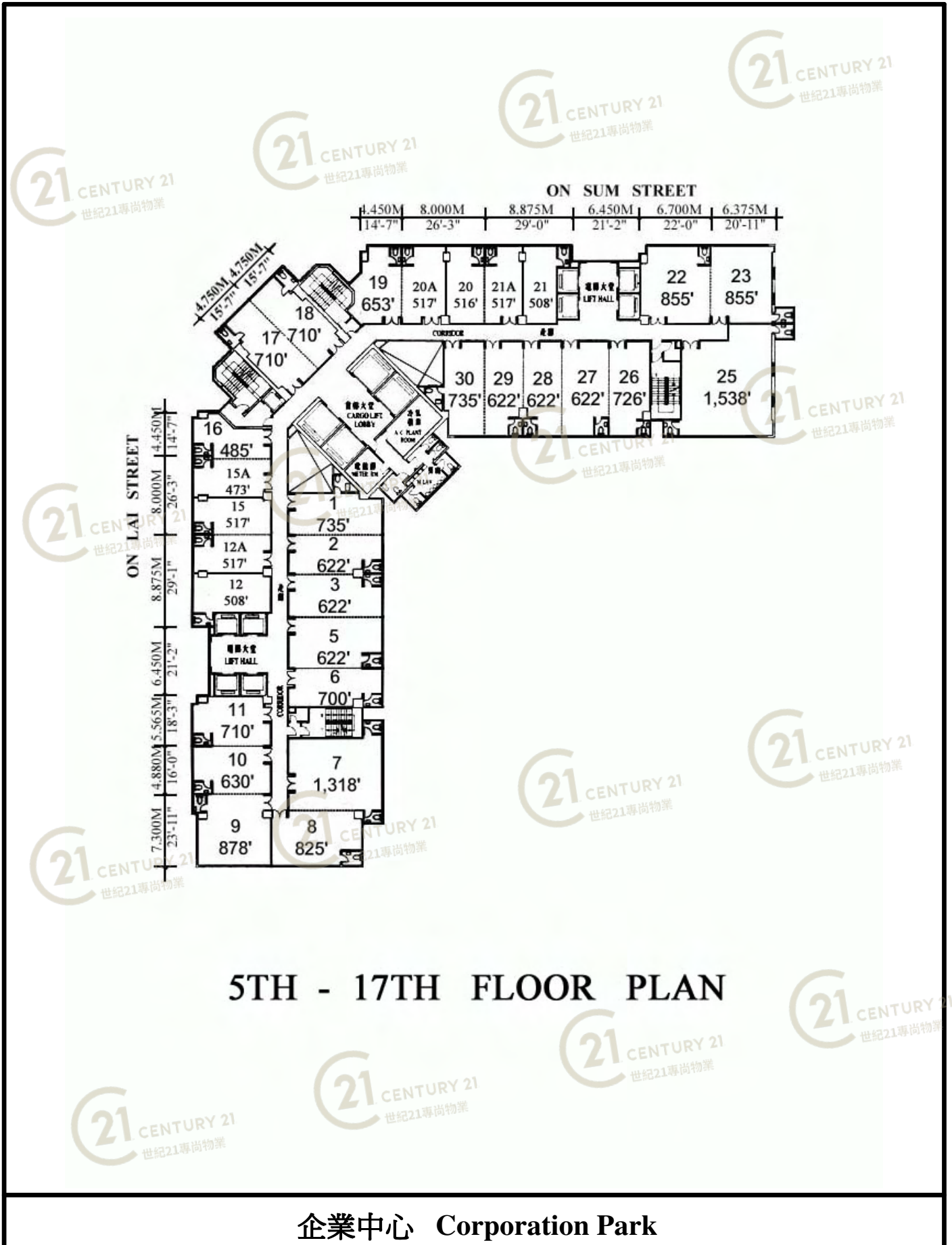
企業中心 Corporation Park

NOT TO SCALE, FOR IDENTIFICATION PURPOSE ONLY

圖中所有數據比例，一概只作參考之用

平面圖

Floor Plan



5TH - 17TH FLOOR PLAN

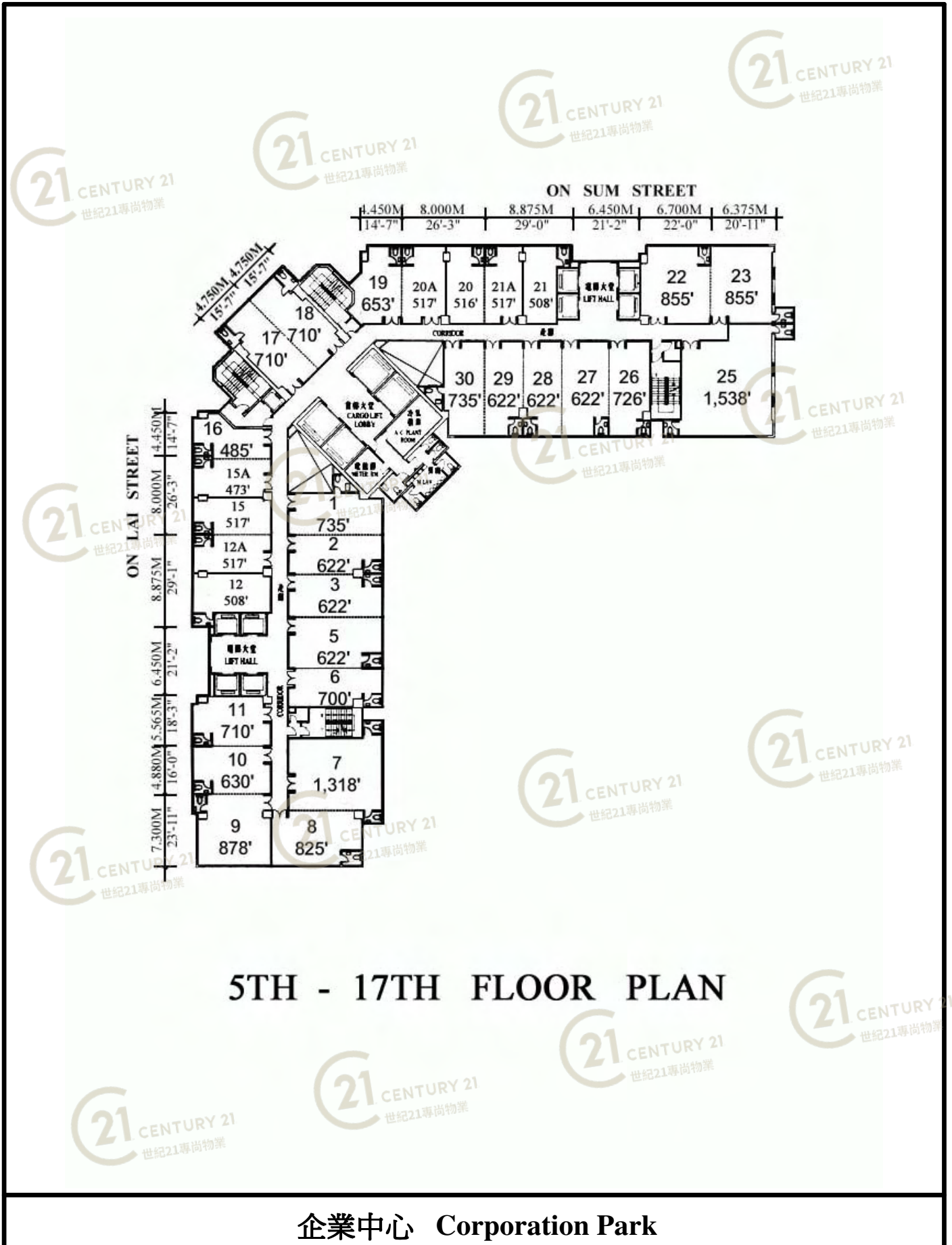
企業中心 Corporation Park

NOT TO SCALE, FOR IDENTIFICATION PURPOSE ONLY

圖中所有數據比例，一概只作參考之用

平面圖

Floor Plan



5TH - 17TH FLOOR PLAN

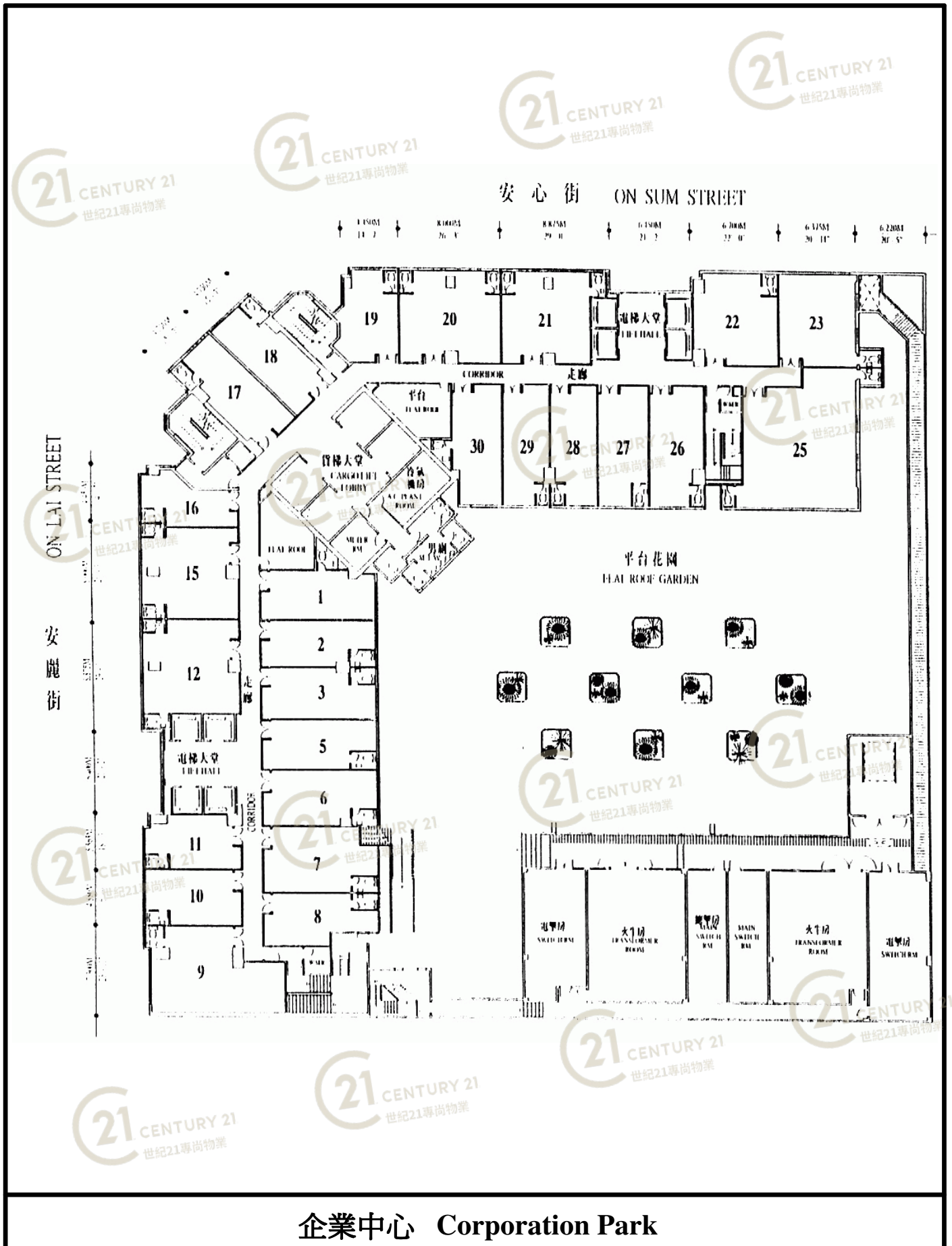
企業中心 Corporation Park

NOT TO SCALE, FOR IDENTIFICATION PURPOSE ONLY

圖中所有數據比例，一概只作參考之用

平面圖

Floor Plan



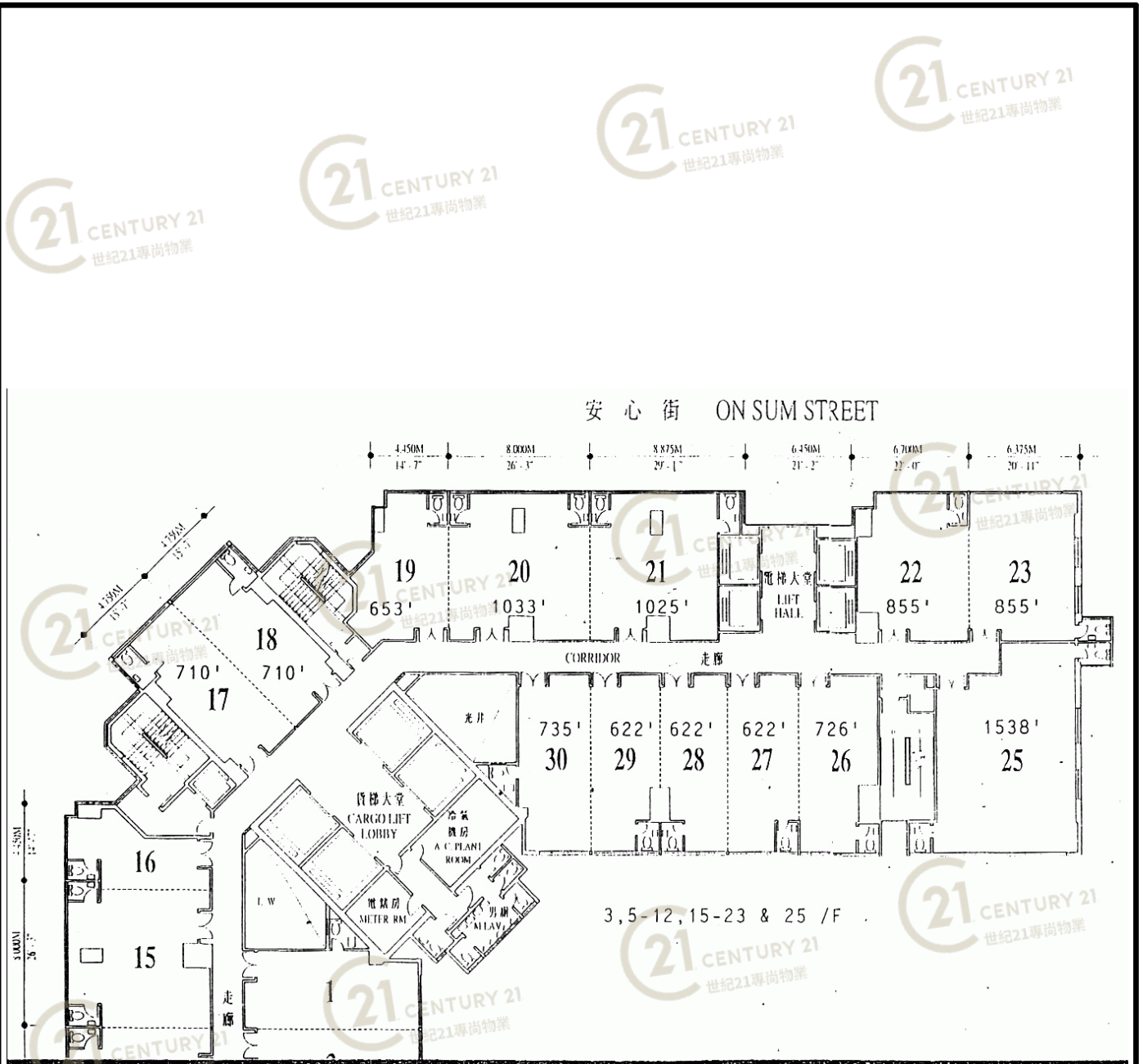
企業中心 Corporation Park

NOT TO SCALE, FOR IDENTIFICATION PURPOSE ONLY

圖中所有數據比例，一概只作參考之用

平面圖

Floor Plan



企業中心 Corporation Park

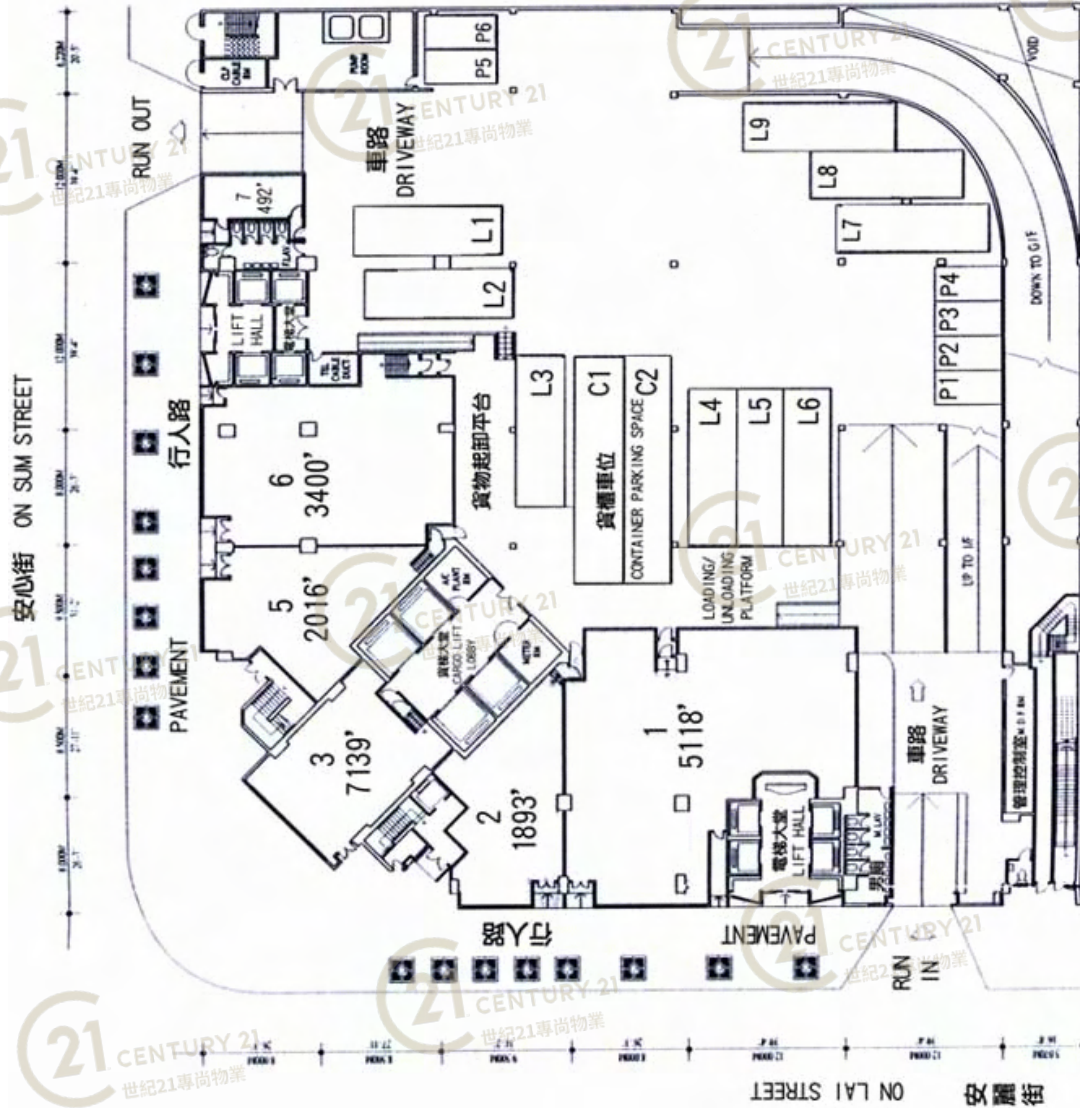
NOT TO SCALE, FOR IDENTIFICATION PURPOSE ONLY

圖中所有數據比例，一概只作參考之用

平面圖

Floor Plan

Ground Floor Plan



樓層	地下
樓高	18'-2" - 24'-1"
每方呎承重力	300磅

企業中心 Corporation Park

NOT TO SCALE, FOR IDENTIFICATION PURPOSE ONLY

圖中所有數據比例，一概只作參考之用

平面圖

Floor Plan



企業中心 Corporation Park

NOT TO SCALE, FOR IDENTIFICATION PURPOSE ONLY

圖中所有數據比例，一概只作參考之用

外觀圖

Building Outlook



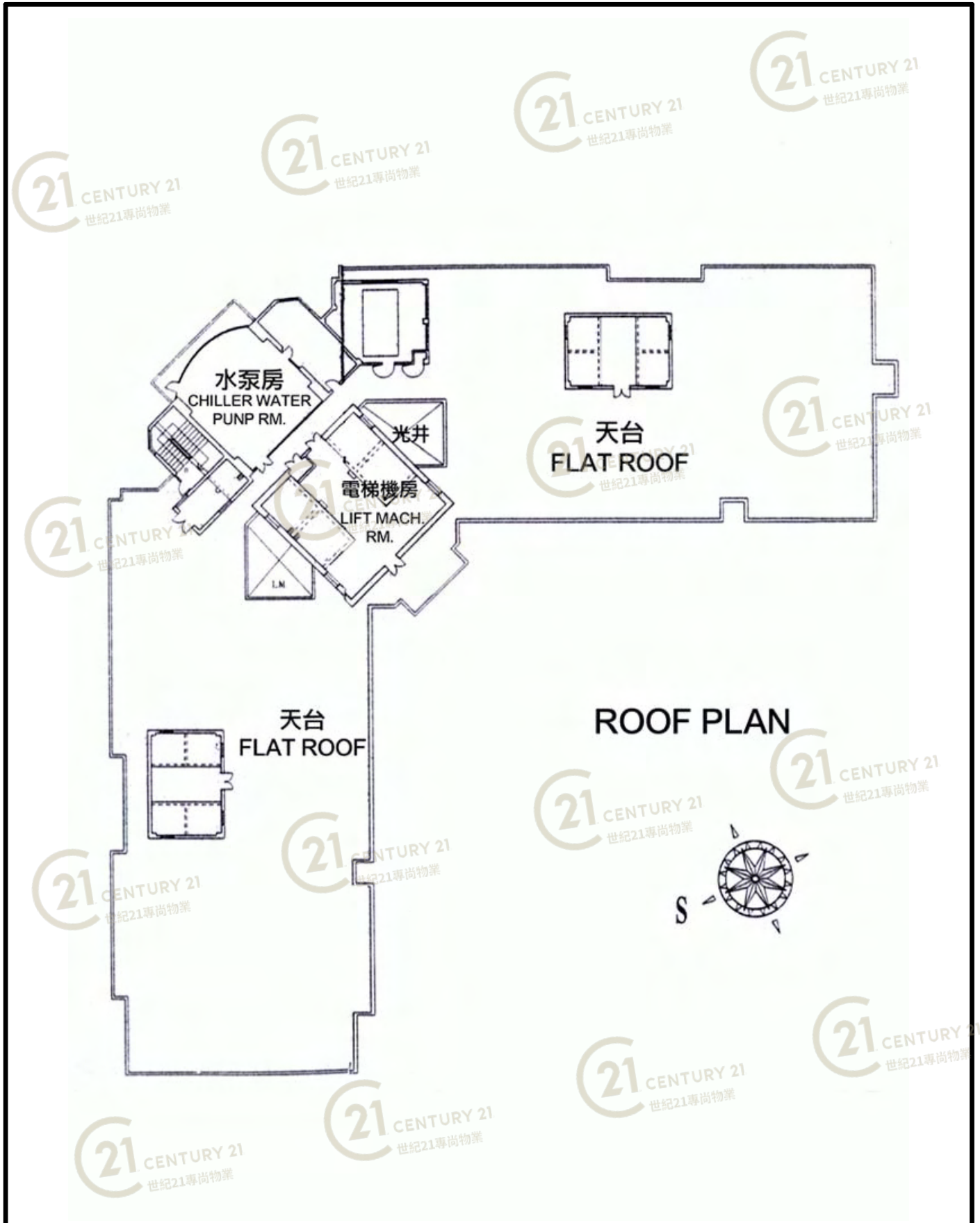
企業中心 Corporation Park

NOT TO SCALE, FOR IDENTIFICATION PURPOSE ONLY

圖中所有數據比例，一概只作參考之用

平面圖

Floor Plan



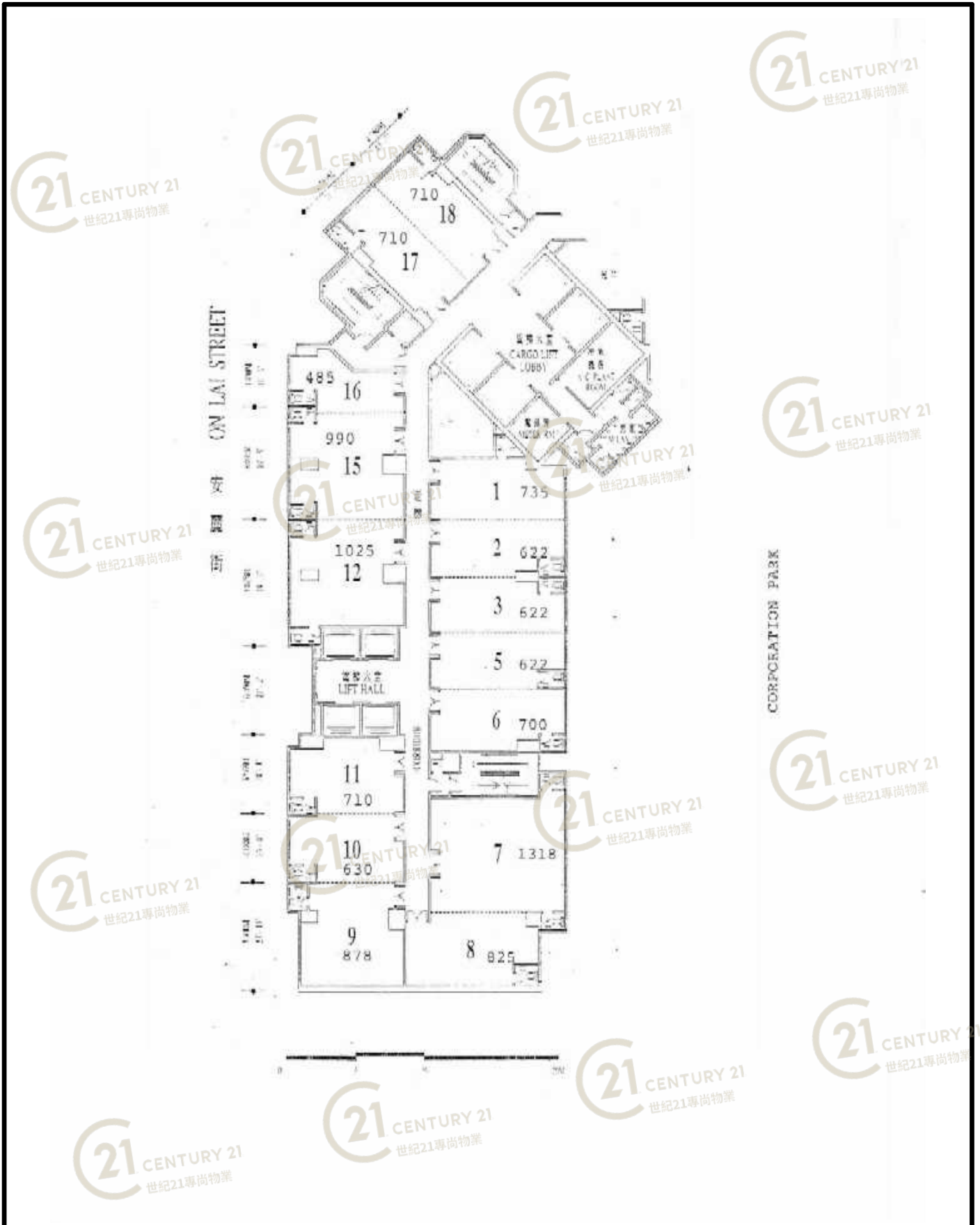
企業中心 Corporation Park

NOT TO SCALE, FOR IDENTIFICATION PURPOSE ONLY

圖中所有數據比例，一概只作參考之用

平面圖

Floor Plan



企業中心 Corporation Park

NOT TO SCALE, FOR IDENTIFICATION PURPOSE ONLY

圖中所有數據比例，一概只作參考之用

平面圖

Floor Plan

Corporation Park (企業中心) 11 On Lai Street, Shatin, N.T.

INDUSTRIAL					
Floor	Unit	M.F.A. (s.f.)	Monthly Rental	P.S.F.	Remarks
樓層	單位	建築面積	月租	呎租	
G/F	7	492	\$12,300	\$25.00	60A單相電, 電箱, 電錶
2/F	12*	1,025	\$9,738	\$9.50	
2/F	17	710	\$6,745	\$9.50	Expire on 22/4/08-->22/5/08
2/F	20	1,033	\$9,814	\$9.50	
2/F	30*	735	\$6,983	\$9.50	
5/F	22	855	\$8,123	\$9.50	
6/F	6	700	\$6,650	\$9.50	燈盤, 60A單相電, 電箱, 電錶
7/F	17	710	\$6,745	\$9.50	
7/F	18	710	\$6,745	\$9.50	
8/F	5 & 6	1,322	\$12,559	\$9.50	63A3相電, 電錶, 地台油
9/F	19	653	\$6,204	\$9.50	Expire on 23/4/08-->31/5/08
10/F	17 & 18	1,420	\$13,490	\$9.50	電箱, 冷氣風機, 膠地板, (1018單位有捲閘)
12/F	12 & 15	2,015	\$19,143	\$9.50	Licence expire on 14/1/08-->14/3/08
16/F	20	1,033	\$9,814	\$9.50	燈, 電箱
17/F	8	825	\$9,488	\$11.50	Show Flat
19/F	17	710	\$6,745	\$9.50	
19/F	18	710	\$6,745	\$9.50	
20/F	17 & 18	1,420	\$13,490	\$9.50	Expire on 30/4/08
20/F	20 & 21	2,058	\$19,551	\$9.50	Expire on 30/4/08
Total		19,136			

2/F	5	622	\$5,909	\$9.50	Expire on 28/6/08
10/F	26	726	\$6,897	\$9.50	Expire on 10/6/08
16/F	22,23,25,26,27	4,596	\$43,662	\$9.50	Expire on 23/6/08
16/F	28	622	\$5,909	\$9.50	Expire on 15/12/08
22/F	22,23,25	3,248	\$30,856	\$9.50	Terminate on 31/7/08
22/F	26 & 27	1,348	\$12,806	\$9.50	Terminate on 31/7/08
11/F	23	855	LEASED		Expire on 30/4/08-->15/6/08
21/F	22	855	LEASED		Expire on 4/6/08

Under Negotiation

Under Offer

Remark : * occupied by material handling

Other Information:

Landlord : Sea Dragon Limited
 Lease Term: 2 years
 Stamp Duty: Borne by both parties in equal shares
 Management Fee and Central Chilled Water Charge(p.m.): approx. \$1.57 p.s.f.
 Cleaning Charges (p.m.): approx. \$0.43 p.s.f.
 Deposit: HK\$0.40p.s.f. (1,000 sq.ft. or below) OR Minimum HK\$300, Whichever is the higher
 HK\$0.35p.s.f. (1,001 sq.ft. to 5,000 sq.ft.) OR Minimum HK\$400, Whichever is the higher
 HK\$0.30p.s.f. (5,001 sq.ft. or above) OR Minimum HK\$1750, Whichever is the higher
 3 Months' Rental, Mgmt. Fee, Central Chilled Water Charges, Rates, Gov't Rent & Cleaning Charges
 Person In Charge: Mr. W. H. Ng (Tel 3176 8308)/ Mr. Alan Leung (Tel 3176 8305)/ Ms. Donna Cheung (Tel 31768301)
 Tenancy Agreement: To be prepared by Mr. Raymond Law (Tel : 2132 8345)/Ms. Peona Ying (Tel : 2132 8484)
 Management Office: Ms. Sharon Wong/Ms Shirin Wong/ Mr. Jack Lai/Ms. Yan/Mr. Law (Tel: 2648 8682)

All prices are subject to change without prior notice



企業中心 Corporation Park

NOT TO SCALE, FOR IDENTIFICATION PURPOSE ONLY

圖中所有數據比例, 一概只作參考之用

外觀圖

Building Outlook



企業中心 Corporation Park

NOT TO SCALE, FOR IDENTIFICATION PURPOSE ONLY

圖中所有數據比例，一概只作參考之用

外觀圖

Building Outlook



企業中心 Corporation Park

NOT TO SCALE, FOR IDENTIFICATION PURPOSE ONLY

圖中所有數據比例，一概只作參考之用

外觀圖

Building Outlook



企業中心 Corporation Park

NOT TO SCALE, FOR IDENTIFICATION PURPOSE ONLY

圖中所有數據比例，一概只作參考之用

外觀圖

Building Outlook



企業中心 Corporation Park

NOT TO SCALE, FOR IDENTIFICATION PURPOSE ONLY

圖中所有數據比例，一概只作參考之用

外觀圖

Building Outlook



企業中心 Corporation Park

NOT TO SCALE, FOR IDENTIFICATION PURPOSE ONLY

圖中所有數據比例，一概只作參考之用

外觀圖

Building Outlook



企業中心 Corporation Park

NOT TO SCALE, FOR IDENTIFICATION PURPOSE ONLY

圖中所有數據比例，一概只作參考之用