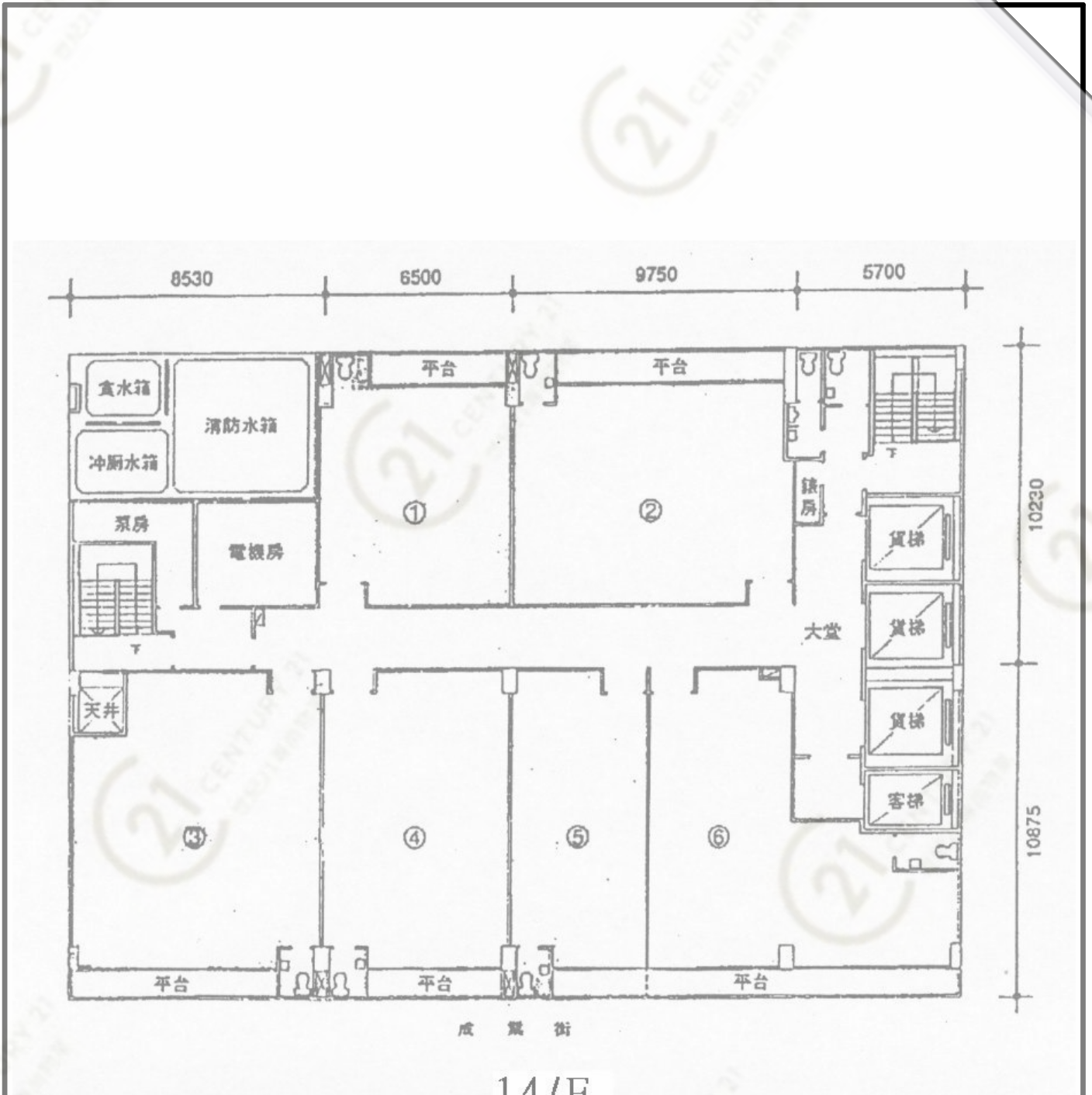


# 平面圖

# Floor Plan



14/F



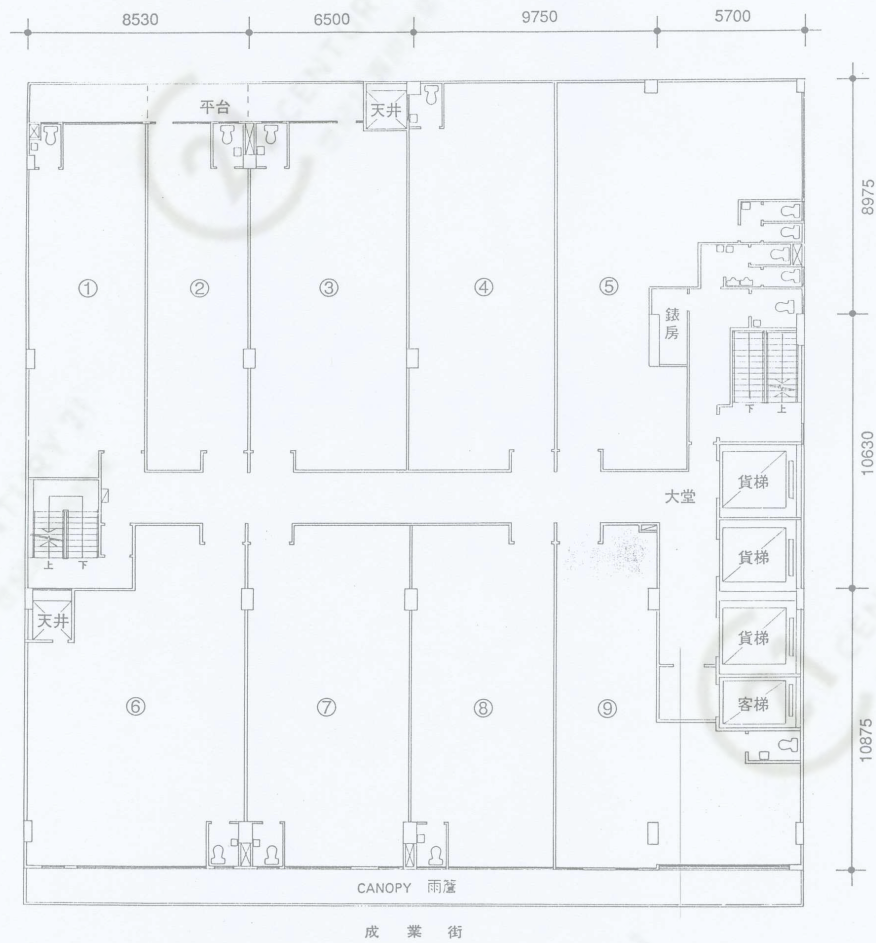
華富工貿中心 Winful Centre

NOT TO SCALE, FOR IDENTIFICATION PURPOSE ONLY

圖中所有數據比例，一概只作參考之用

華富工貿中心

1 一樓平面圖  
1ST FLOOR PLAN



ALL PLANS ARE SUBJECT TO THE FINAL PLANS APPROVED BY THE BUILDING AUTHORITY. 詳細訂正圖則以工務局最後批准之圖則為標準



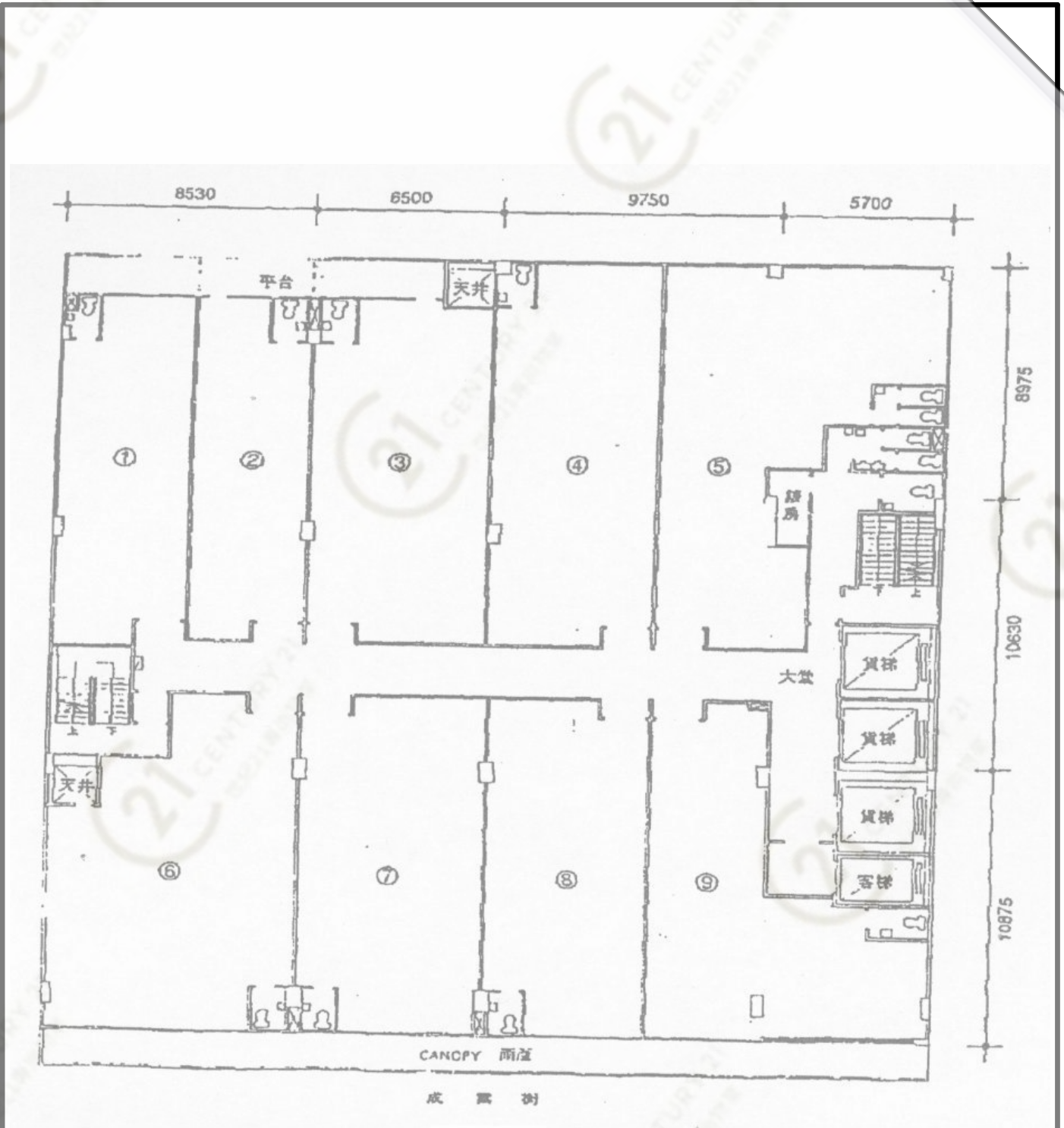
華富工貿中心 Winful Centre

NOT TO SCALE, FOR IDENTIFICATION PURPOSE ONLY

圖中所有數據比例，一概只作參考之用

# 平面圖

# Floor Plan



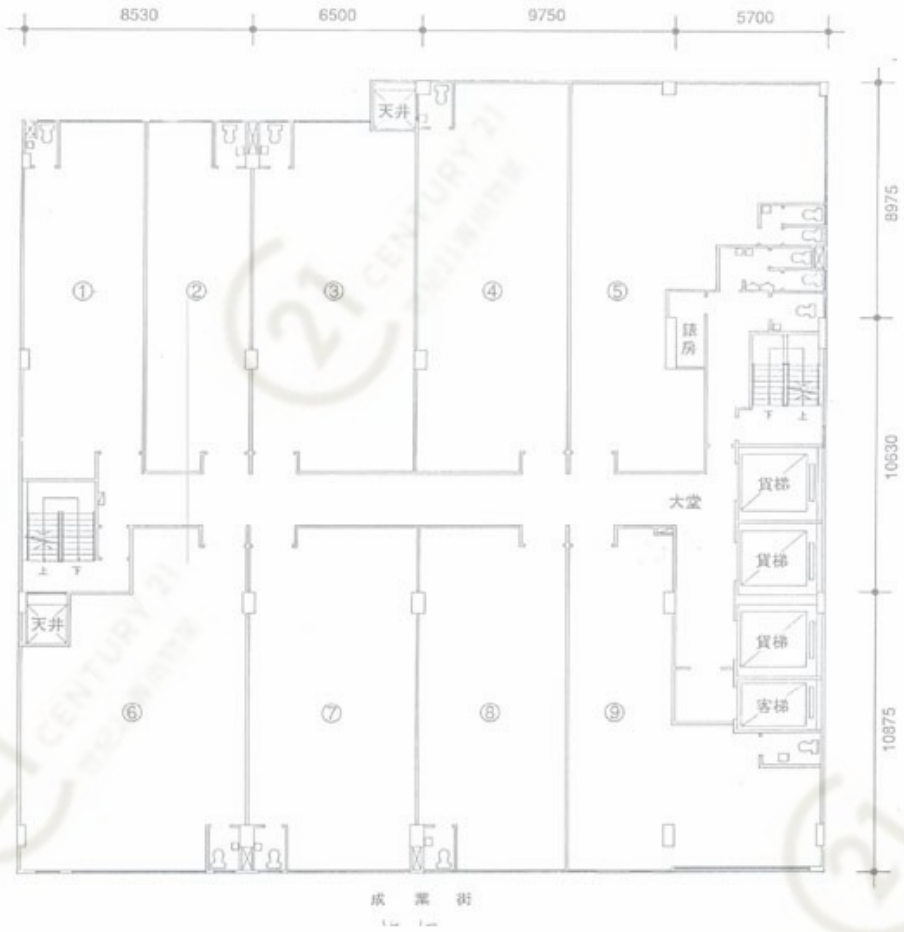
1/F



華富工貿中心 Winful Centre

NOT TO SCALE, FOR IDENTIFICATION PURPOSE ONLY  
圖中所有數據比例，一概只作參考之用

2 二至三樓平面圖  
ND- 3RD FLOOR PLAN

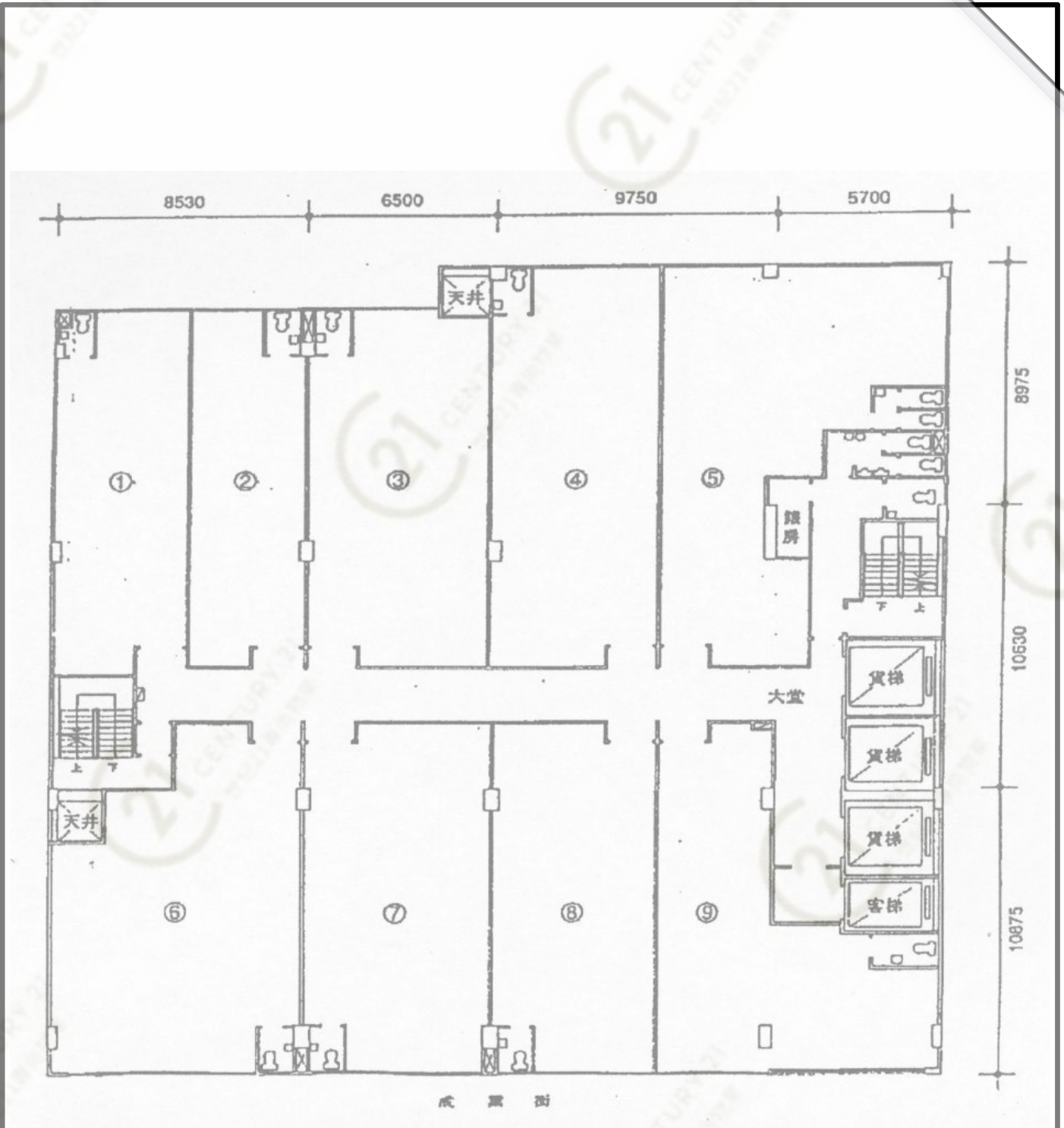


華富工貿中心 Winful Centre

NOT TO SCALE, FOR IDENTIFICATION PURPOSE ONLY  
圖中所有數據比例，一概只作參考之用

# 平面圖

# Floor Plan



2-3/F

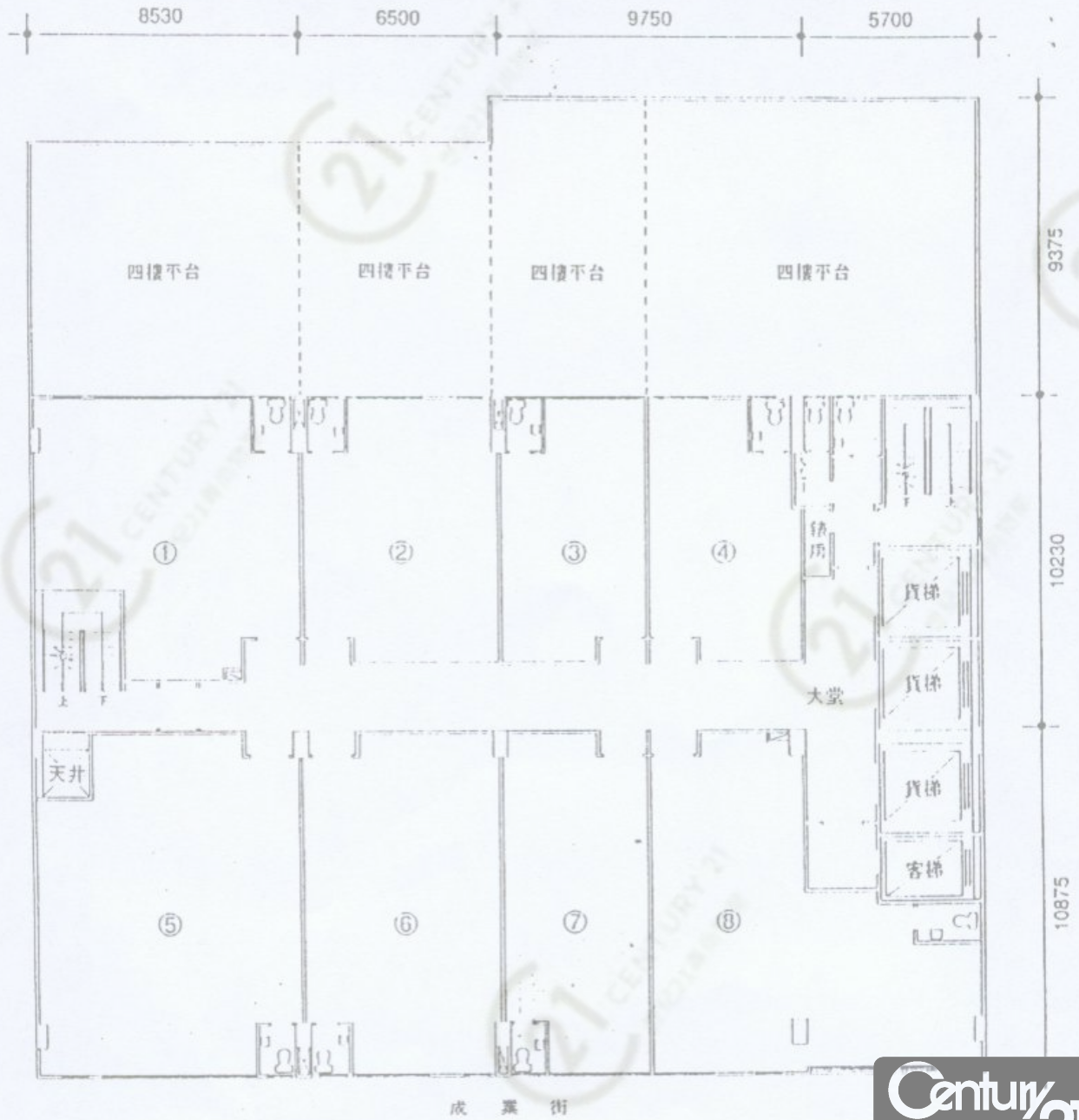


華富工貿中心 Winful Centre

NOT TO SCALE, FOR IDENTIFICATION PURPOSE ONLY

圖中所有數據比例，一概只作參考之用

# 4 TH - 13TH FLOOR PLAN



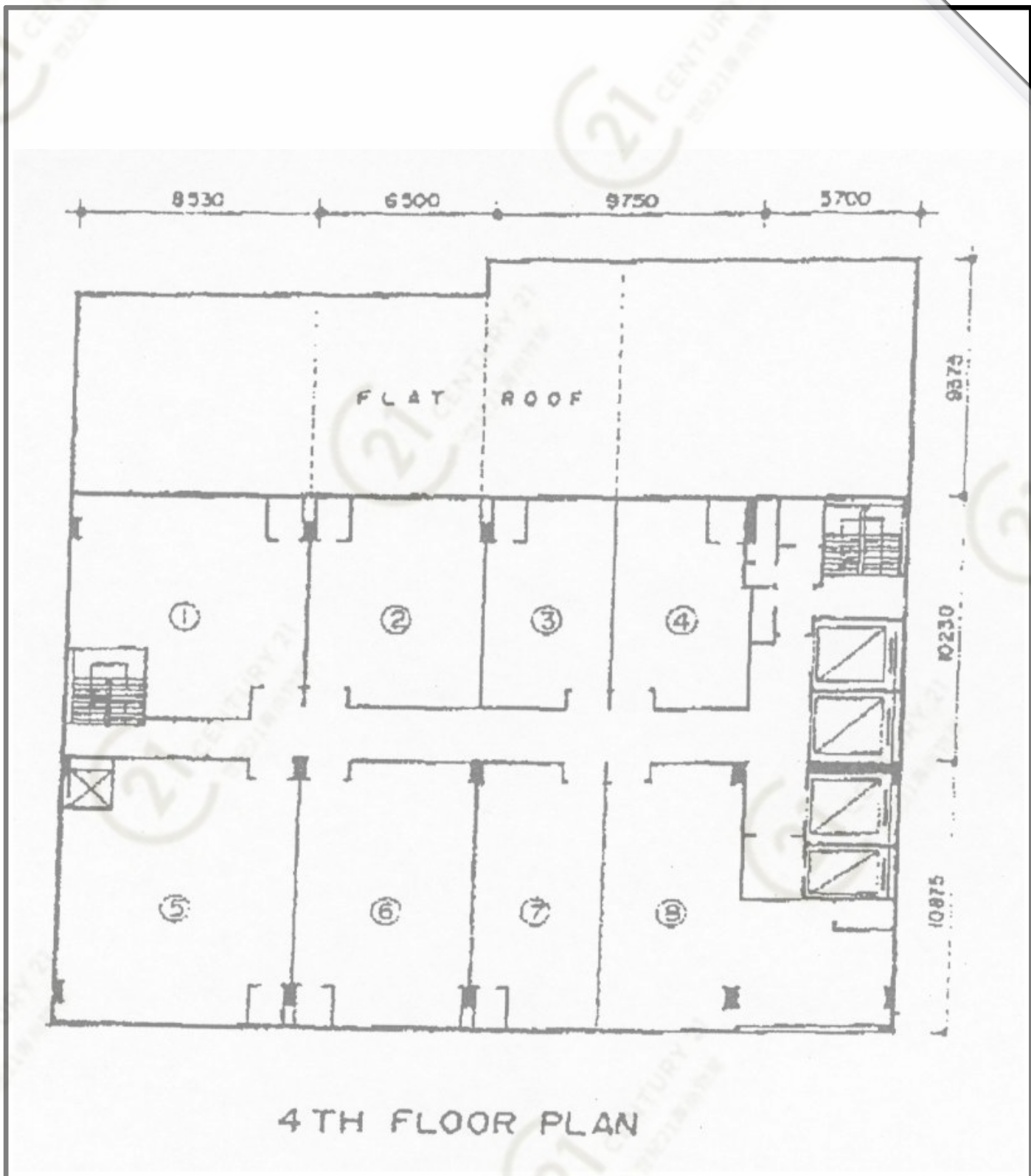
華富工貿中心 Winful Centre

NOT TO SCALE, FOR IDENTIFICATION PURPOSE ONLY

圖中所有數據比例，一概只作參考之用

# 平面圖

# Floor Plan



4 TH FLOOR PLAN

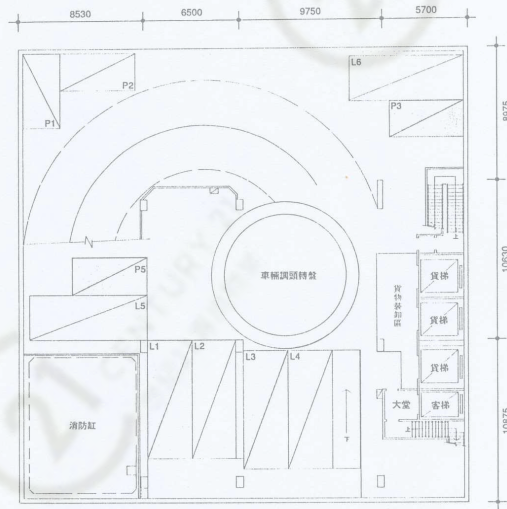


華富工貿中心 Winful Centre

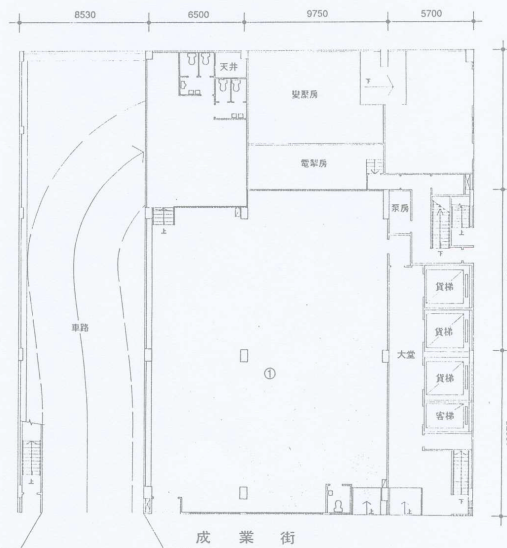
NOT TO SCALE, FOR IDENTIFICATION PURPOSE ONLY

圖中所有數據比例，一概只作參考之用

# B 地庫平面圖 BASEMENT PLAN



成業街



成業街

# G 地下平面圖 GROUND FLOOR PLAN

ALL PLANS ARE SUBJECT TO THE FINAL PLANS APPROVED BY THE BUILDING AUTHORITY  
詳細訂正與圖則以工務局最後批准之圖則為準



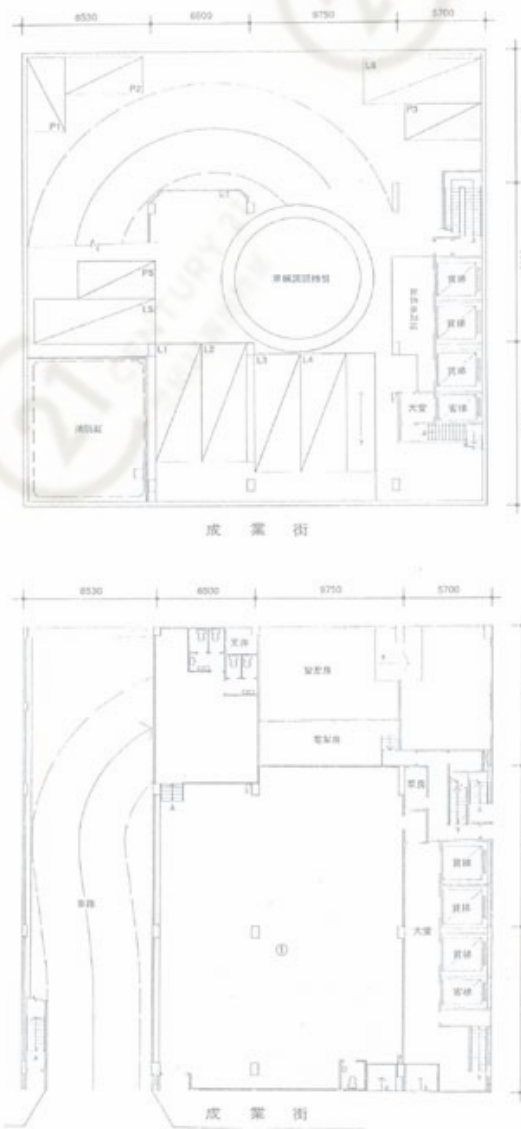
## 華富工貿中心 Winful Centre

NOT TO SCALE, FOR IDENTIFICATION PURPOSE ONLY

圖中所有數據比例，一概只作參考之用



**B** 地庫平面圖  
BASEMENT PLAN



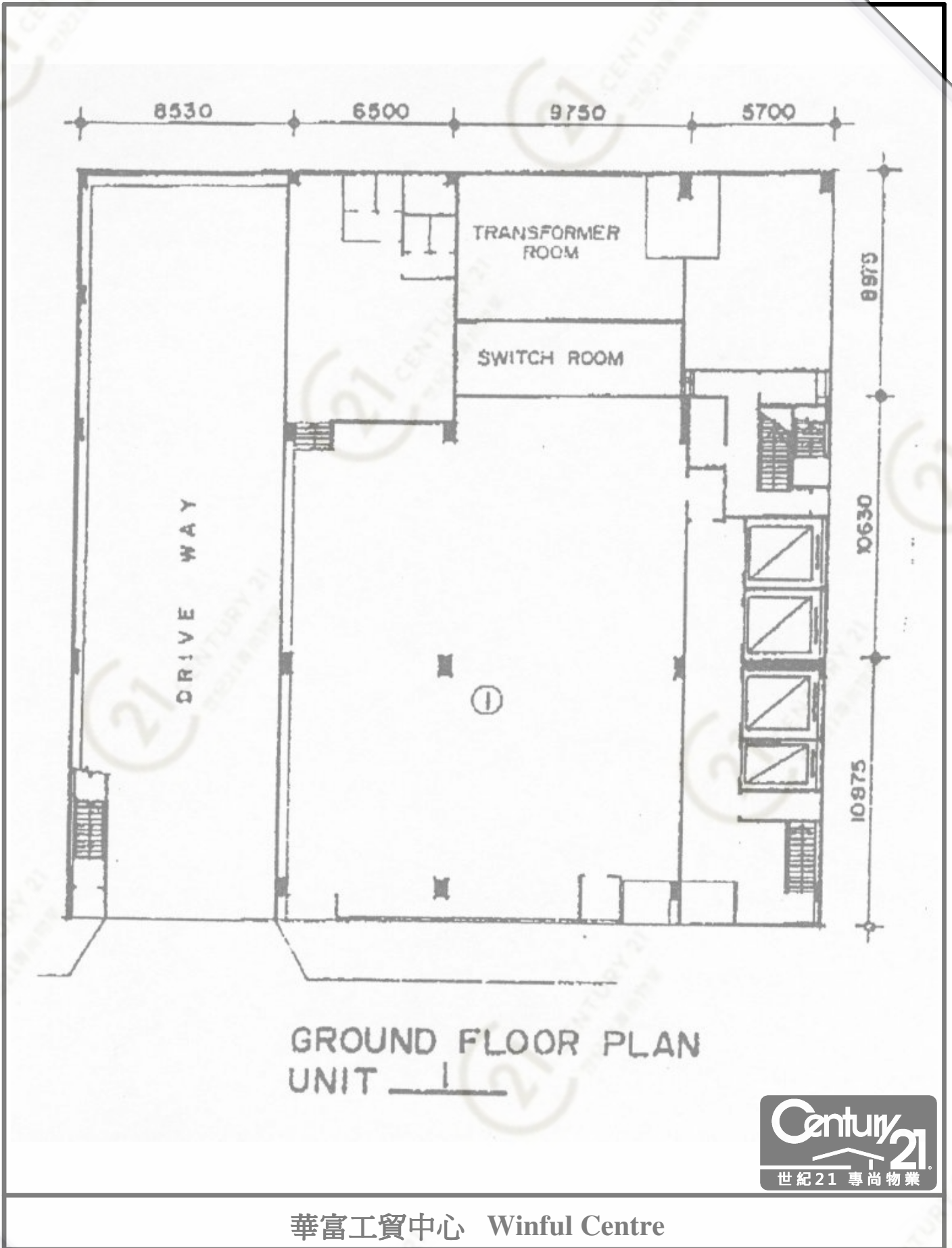
華富工貿中心 Winful Centre

NOT TO SCALE, FOR IDENTIFICATION PURPOSE ONLY

圖中所有數據比例，一概只作參考之用

平面圖

Floor Plan



NOT TO SCALE, FOR IDENTIFICATION PURPOSE ONLY

圖中所有數據比例，一概只作參考之用

# 平面圖

# Floor Plan

Location : No. 10 Shing Yip Street,  
地址 : Kwun Tong, Kowloon.

## PRICE LIST 價目表

座 BLOCK	No. 1	No. 2	No. 3	No. 4	No. 5	No. 6
寫字樓 GA (s.f.)	901	796	1,242	1,296	1,570	1,414
實用面積 JA (s.f.)	671	592	925	964	1,168	1,053
1/F	\$930,715	\$814,340	\$1,279,555	\$1,328,575	\$1,614,050	\$1,449,415
Flat Roof	110 s.f.	76 s.f.	101 s.f.	-	-	-
GA (s.f.)	901	796	1,242	1,296	1,570	1,414
UA (s.f.)	671	592	925	964	1,170	1,053
2/F	\$905,635	\$796,195	\$1,254,570	\$1,322,020	\$1,611,485	\$1,442,385
3/F	\$905,635	\$796,195	\$1,254,570	\$1,322,020	\$1,611,485	\$1,442,385
GA (s.f.)	925	774	587	569	1,266	1,023
UA (s.f.)	688	576	437	424	942	761
4/F	\$1,171,825	\$969,095	\$774,050	\$932,710	\$1,297,795	\$1,064,095
Flat Roof	972 s.f.	713 s.f.	685 s.f.	1,445 s.f.	-	-
5/F	948,290	805,030	616,455	600,305	1,297,795	1,064,095
6/F	943,635	801,135	613,510	597,550	1,291,430	1,058,965
7/F	938,980	797,335	610,565	594,795	1,285,065	1,053,740
8/F	938,980	797,335	610,565	594,795	1,285,065	1,053,740
9/F	934,325	793,440	607,620	591,850	1,278,795	1,048,610
10/F	929,765	789,545	604,770	589,095	1,272,430	1,043,575
11/F	925,110	785,745	601,730	586,150	1,266,160	1,038,445
12/F	925,110	785,745	601,730	586,150	1,266,160	1,038,445
13/F	920,455	781,850	598,880	583,395	1,259,795	1,033,315
GA (s.f.)	740	1,030	1,173	953	721	1,084
UA (s.f.)	545	762	867	710	539	740
14/F	\$684,855	\$966,910	\$1,080,720	\$878,275	\$668,990	\$1,026,190
Flat Roof	69 s.f.	114 s.f.	102 s.f.	69 s.f.	48 s.f.	155 s.f.

## 華富工貿中心 Winful Centre



NOT TO SCALE, FOR IDENTIFICATION PURPOSE ONLY

圖中所有數據比例, 一概只作參考之用

PRICE LIST 價目表

樓層 BLOCK	No. 7		No. 8		No. 9		每層平均價 AP/s.f. 折實售價 @ % Dis.
	單位編號 Unit No.	每呎平均價 AP/s.f. (折實售價) @ % Dis.	單位編號 Unit No.	每呎平均價 AP/s.f. (折實售價) @ % Dis.	單位編號 Unit No.	每呎平均價 AP/s.f. (折實售價) @ % Dis.	
1/F	771	\$1,036	1,098	\$1,026	1,209	\$1,020	\$1,028
	574		817		900		
	\$1,295,990				\$1,233,290		
2/F		1,030		1,020		1,015	1,018
	1,289,625		1,120,050		1,227,210		
3/F		1,030		1,020		1,015	1,018
	1,289,625		1,120,050		1,227,210		
4/F	771		1,148				
	574	\$1,051	855	\$1,055			\$1,166
5/F	\$809,685		\$1,211,250				
	809,685	1,051	1,211,250	1,055			1,041
6/F	805,790	1,046	1,205,550	1,051			1,036
	801,990	1,041	1,199,755	1,045			1,031
8/F	801,990	1,041	1,199,755	1,045			1,031
	798,095	1,036	1,194,055	1,041			1,026
10/F	794,295	1,031	1,188,260	1,035			1,021
	790,305	1,025	1,182,560	1,031			1,016
12/F	790,305	1,025	1,182,560	1,031			1,016
	786,505	1,021	1,176,860	1,026			1,011
14/F							931
BLOCK	Unit 01						
GA (s.f.)	5,942						
	4,421						
G/F	\$9,210,250	\$1,155					\$1,155

訂購時付款辦法:-  
 (A) 一次付清  
 1. 定金先付 HK\$10000;  
 2. 首期樓價 20%。由落成日計三天內交付;  
 3. 全部樓款於由入伙紙發出七天內付清。  
 (B) 分期付款 HK\$10000:  
 1. 定金先付 HK\$10000;  
 2. 首期樓價 10%。由落成日計三天內交付;  
 3. 餘款樓價 90%。于本公司分期供付。由落成翌月首日起供付。最長可分 14 年供。(利率按 11% P.A. 浮動計)。



華富工貿中心 Winful Centre



NOT TO SCALE, FOR IDENTIFICATION PURPOSE ONLY  
 圖中所有數據比例，一概只作參考之用