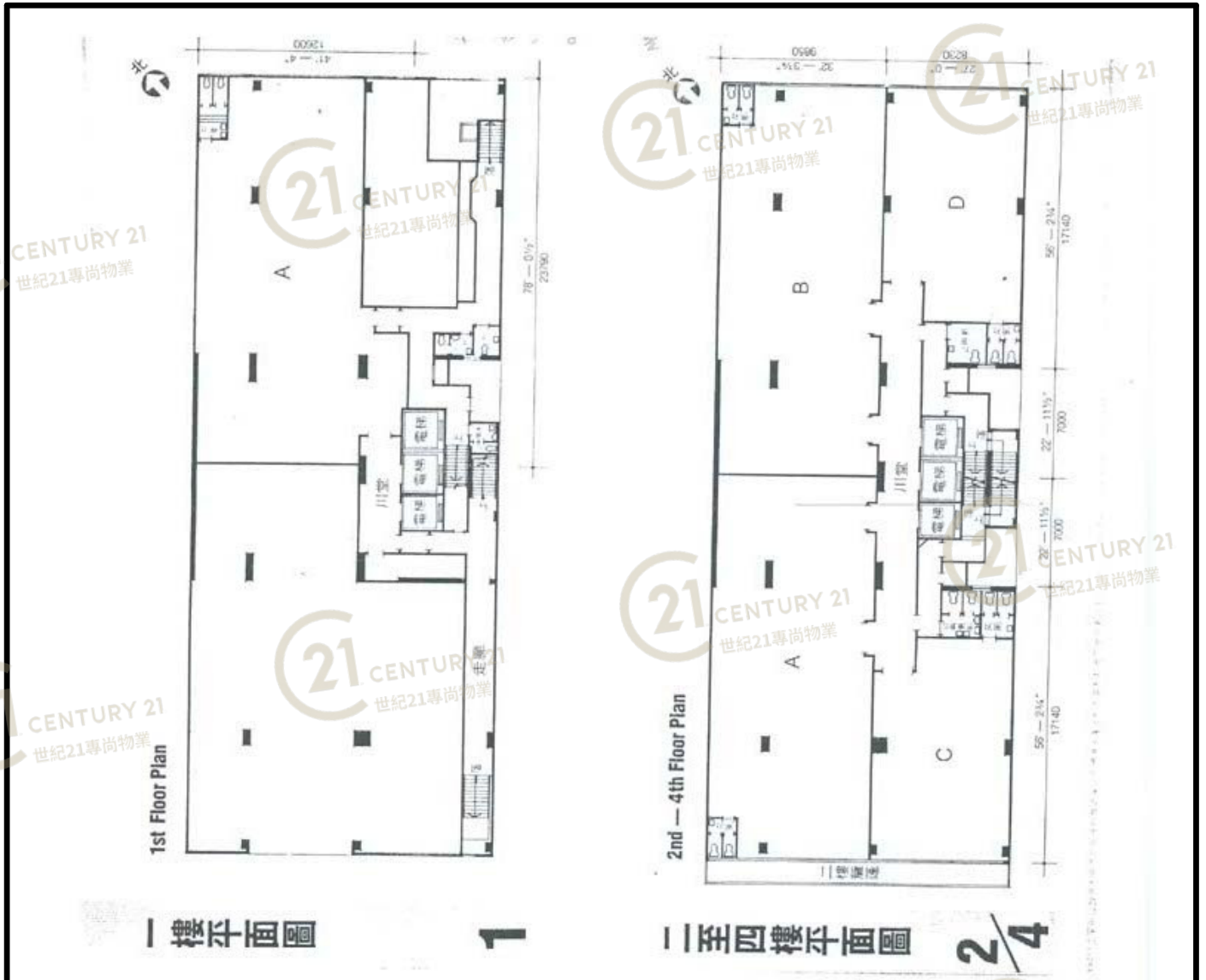


平面圖

Floor Plan



榮昌工業大廈 (官塘) Wing Cheung Industrial Building (KT)

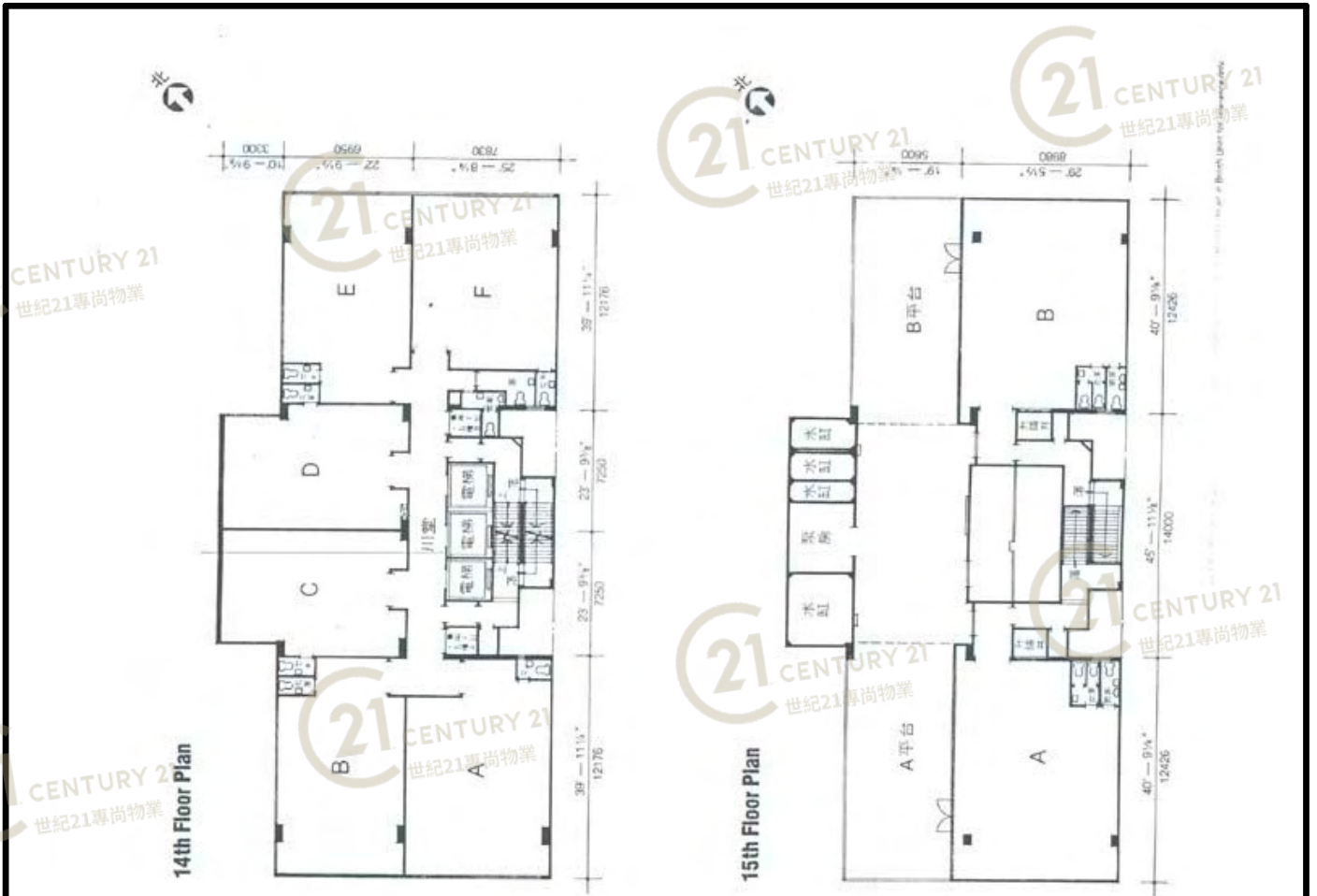
NOT TO SCALE, FOR IDENTIFICATION PURPOSE ONLY

圖中所有數據比例，一概只作參考之用



平面圖

Floor Plan



十四樓平面圖

14

十五樓平面圖

15

榮昌工業大廈 (官塘) Wing Cheung Industrial Building (KT)

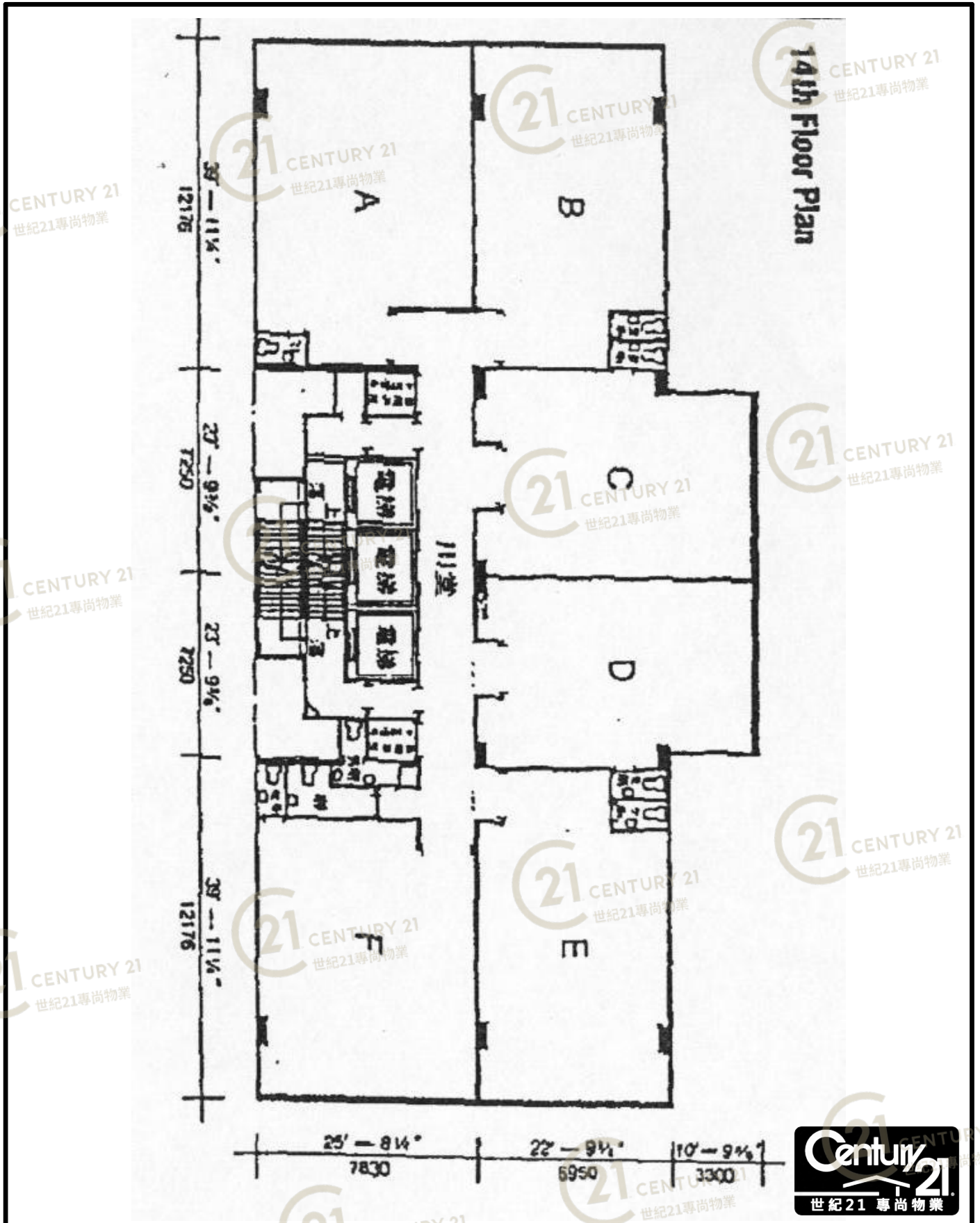
NOT TO SCALE, FOR IDENTIFICATION PURPOSE ONLY

圖中所有數據比例，一概只作參考之用



平面圖

Floor Plan



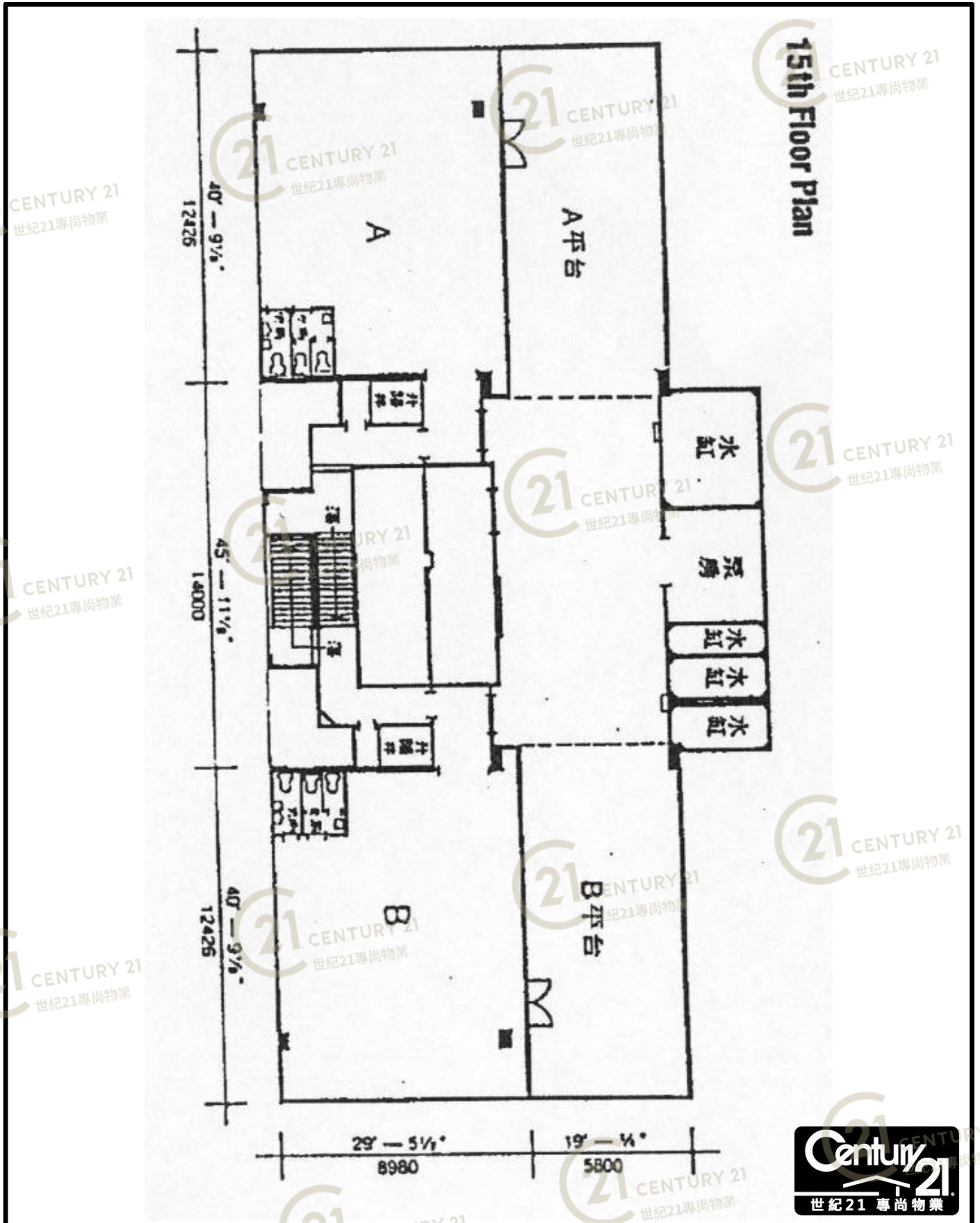
榮昌工業大廈 (官塘) Wing Cheung Industrial Building (KT)

NOT TO SCALE, FOR IDENTIFICATION PURPOSE ONLY

圖中所有數據比例，一概只作參考之用

平面圖

Floor Plan



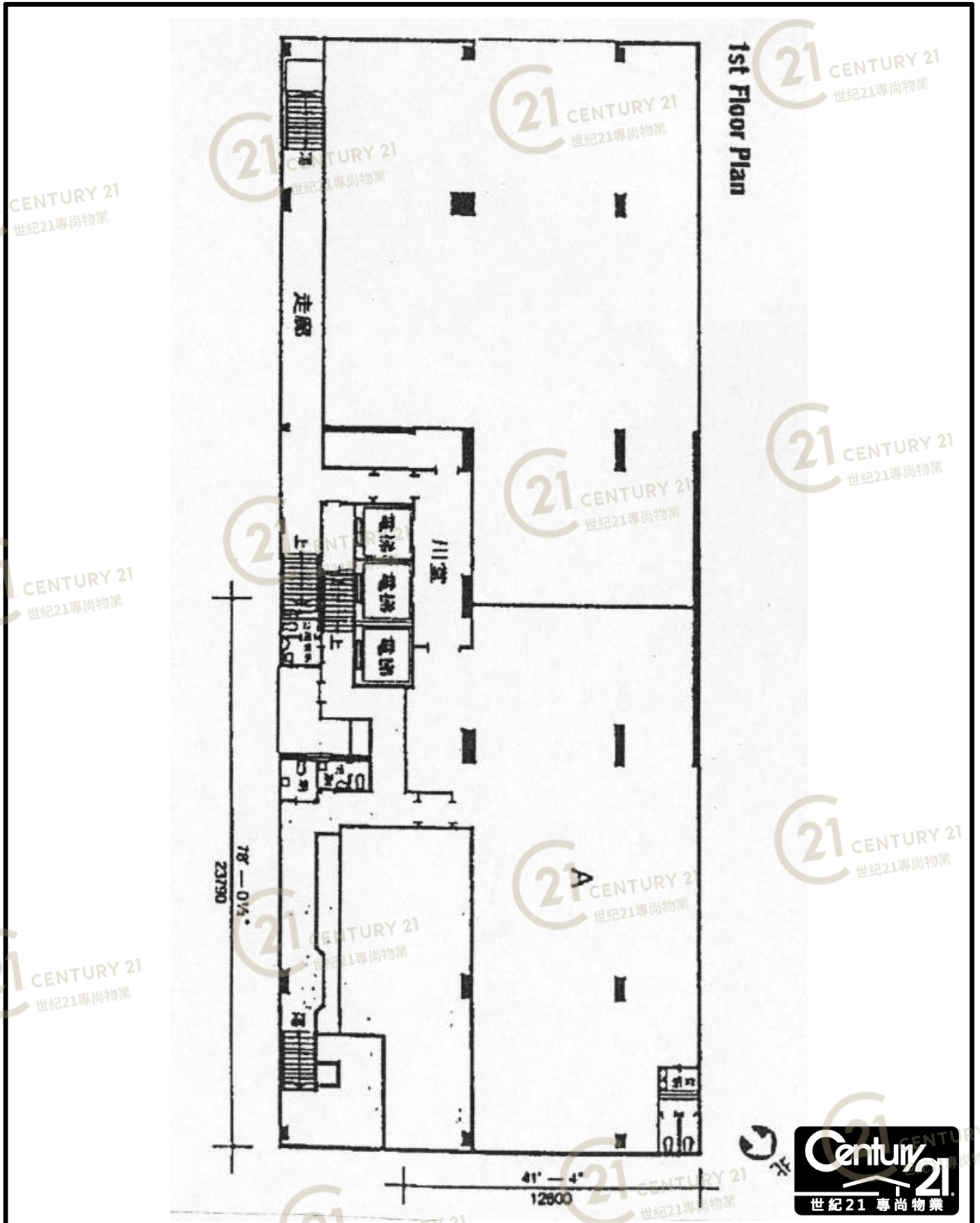
榮昌工業大廈 (官塘) Wing Cheung Industrial Building (KT)

NOT TO SCALE, FOR IDENTIFICATION PURPOSE ONLY

圖中所有數據比例，一概只作參考之用

平面圖

Floor Plan

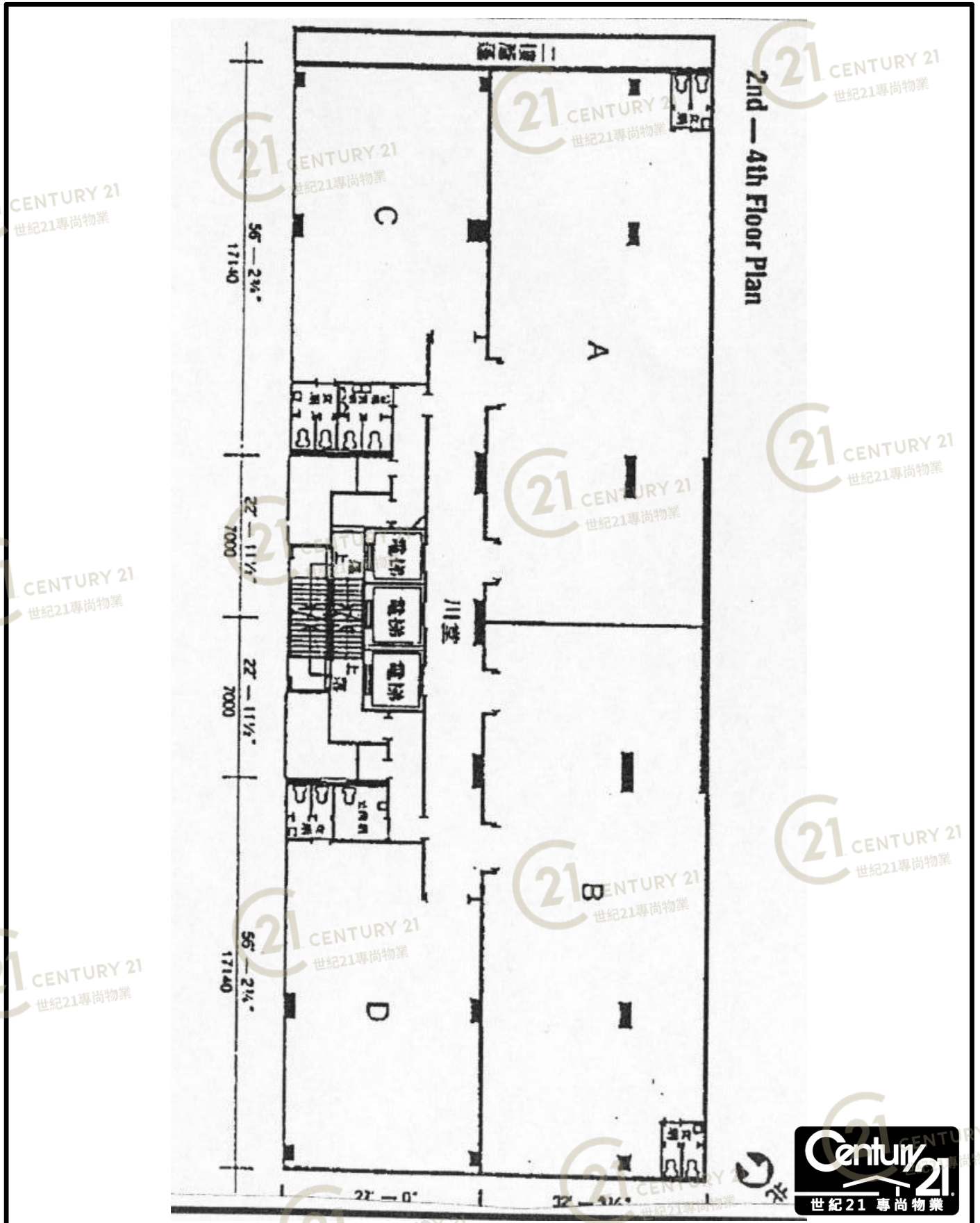


榮昌工業大廈 (官塘) Wing Cheung Industrial Building (KT)

NOT TO SCALE, FOR IDENTIFICATION PURPOSE ONLY
圖中所有數據比例，一概只作參考之用

平面圖

Floor Plan



榮昌工業大廈 (官塘) Wing Cheung Industrial Building (KT)

NOT TO SCALE, FOR IDENTIFICATION PURPOSE ONLY

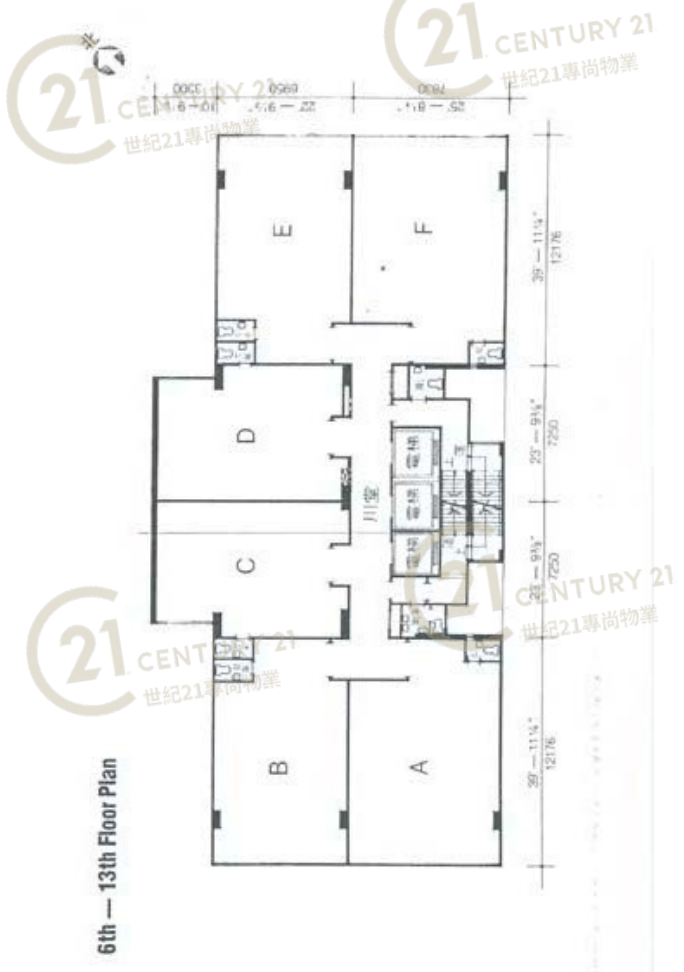
圖中所有數據比例，一概只作參考之用

平面圖

Floor Plan



五樓平面圖 5



六至十三樓平面圖 6/13

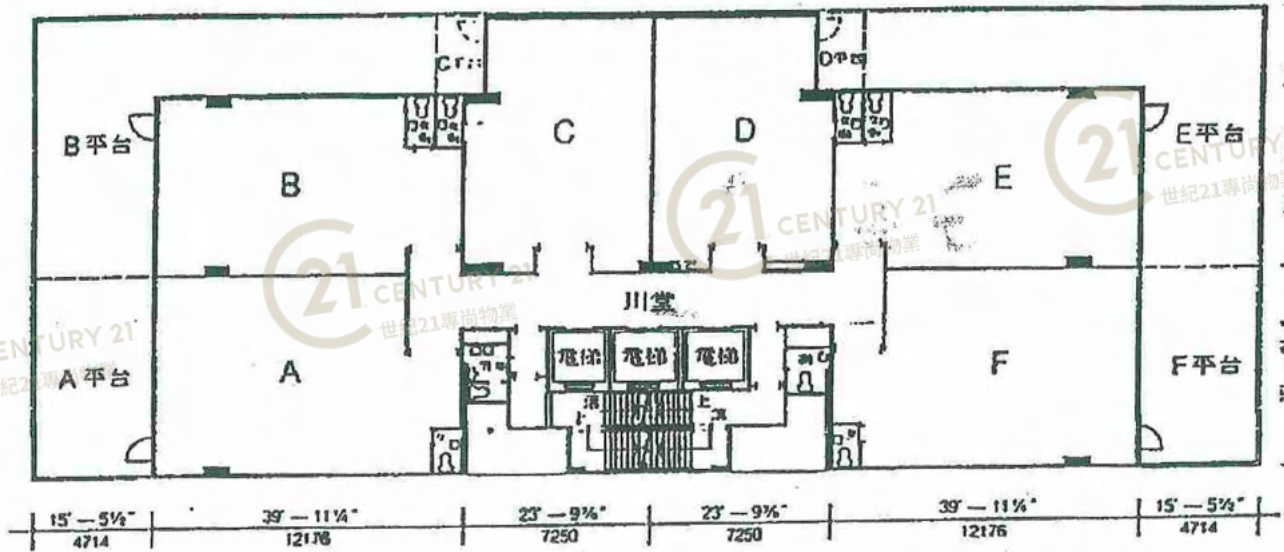


榮昌工業大廈 (官塘) Wing Cheung Industrial Building (KT)

NOT TO SCALE, FOR IDENTIFICATION PURPOSE ONLY
圖中所有數據比例，一概只作參考之用

榮昌工業大廈 5/F(WING CHEUNG IND BLDG)

5th Floor Plan



5F



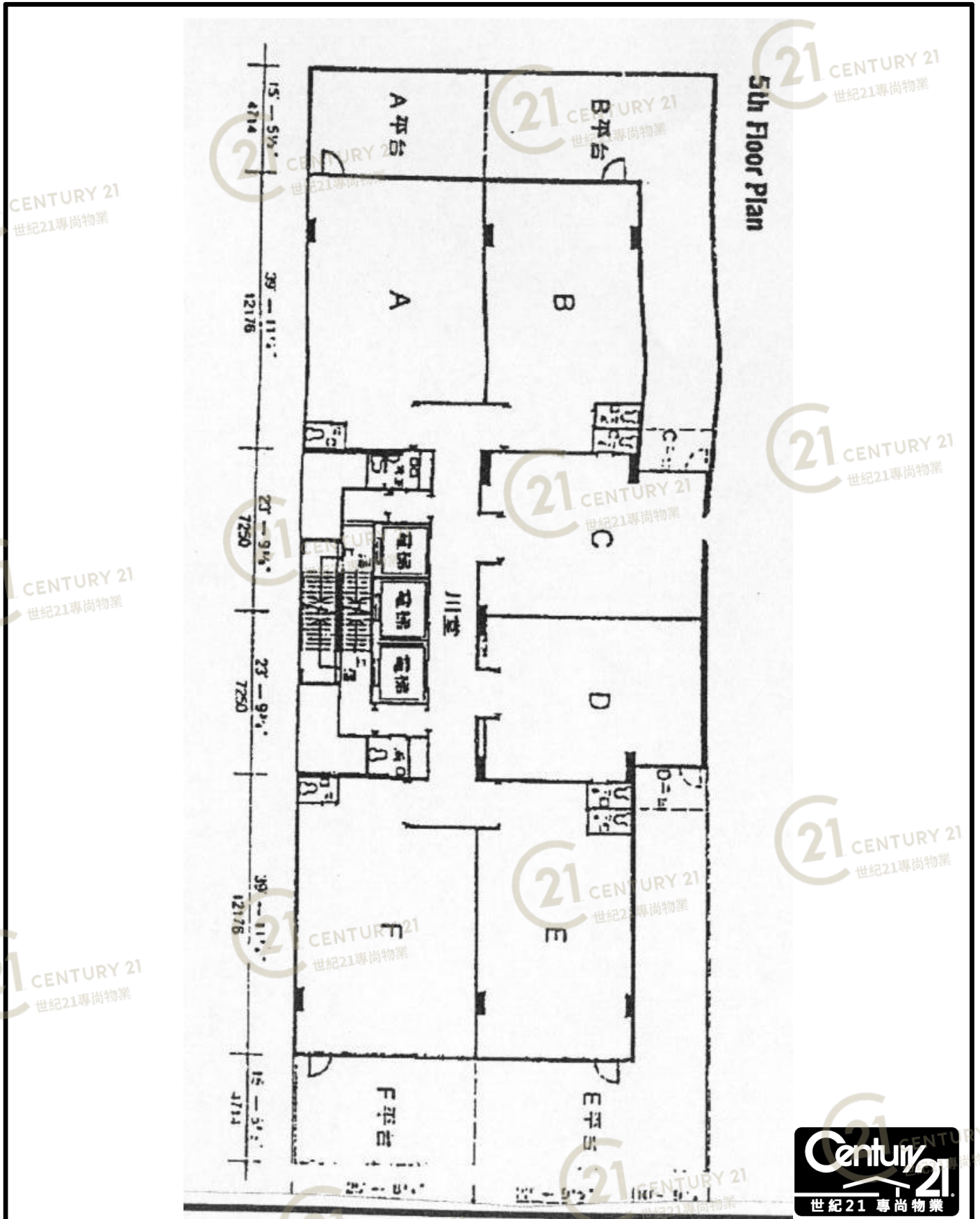
榮昌工業大廈 (官塘) Wing Cheung Industrial Building (KT)

NOT TO SCALE, FOR IDENTIFICATION PURPOSE ONLY

圖中所有數據比例, 一概只作參考之用

平面圖

Floor Plan



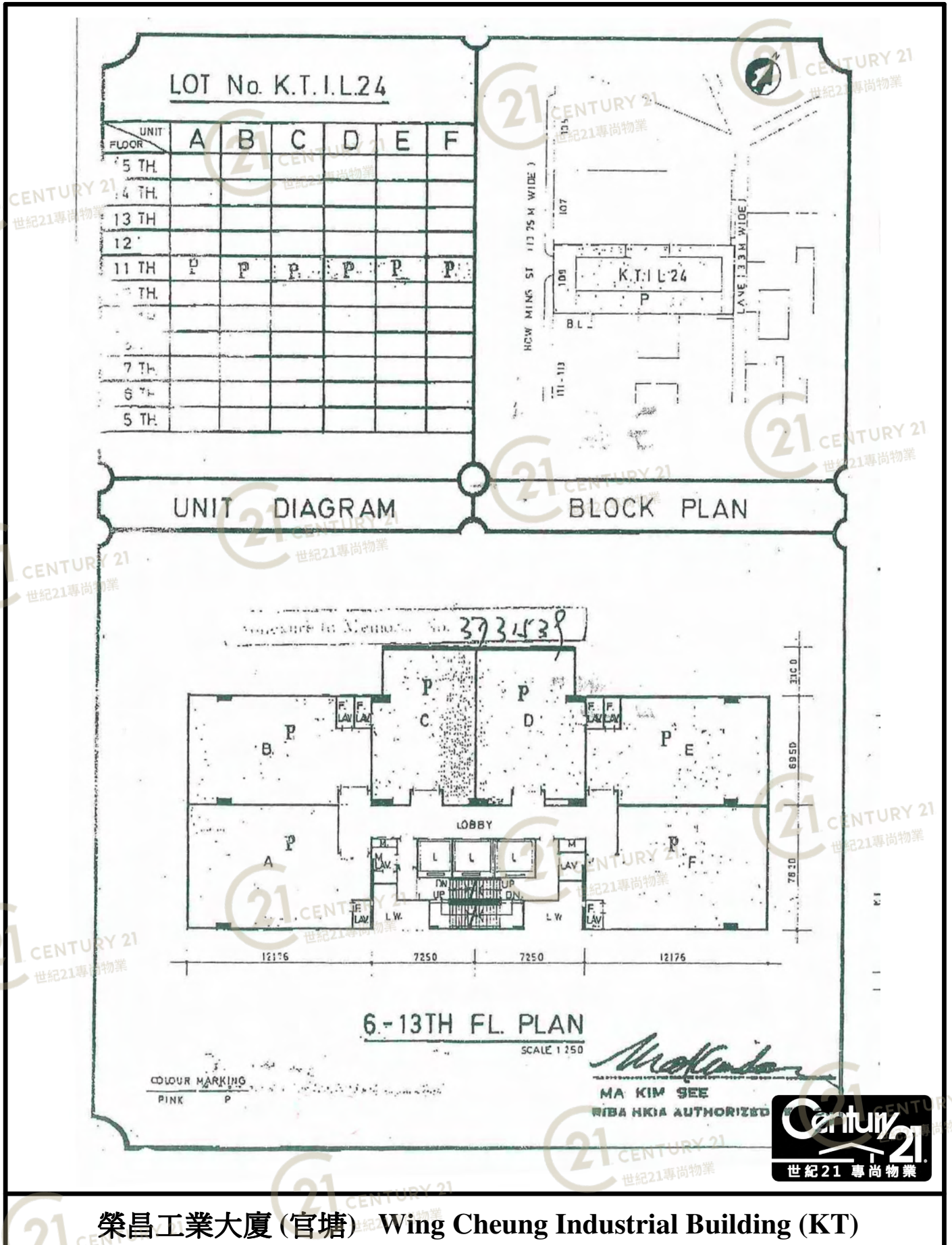
榮昌工業大廈 (官塘) Wing Cheung Industrial Building (KT)

NOT TO SCALE, FOR IDENTIFICATION PURPOSE ONLY

圖中所有數據比例，一概只作參考之用

平面圖

Floor Plan



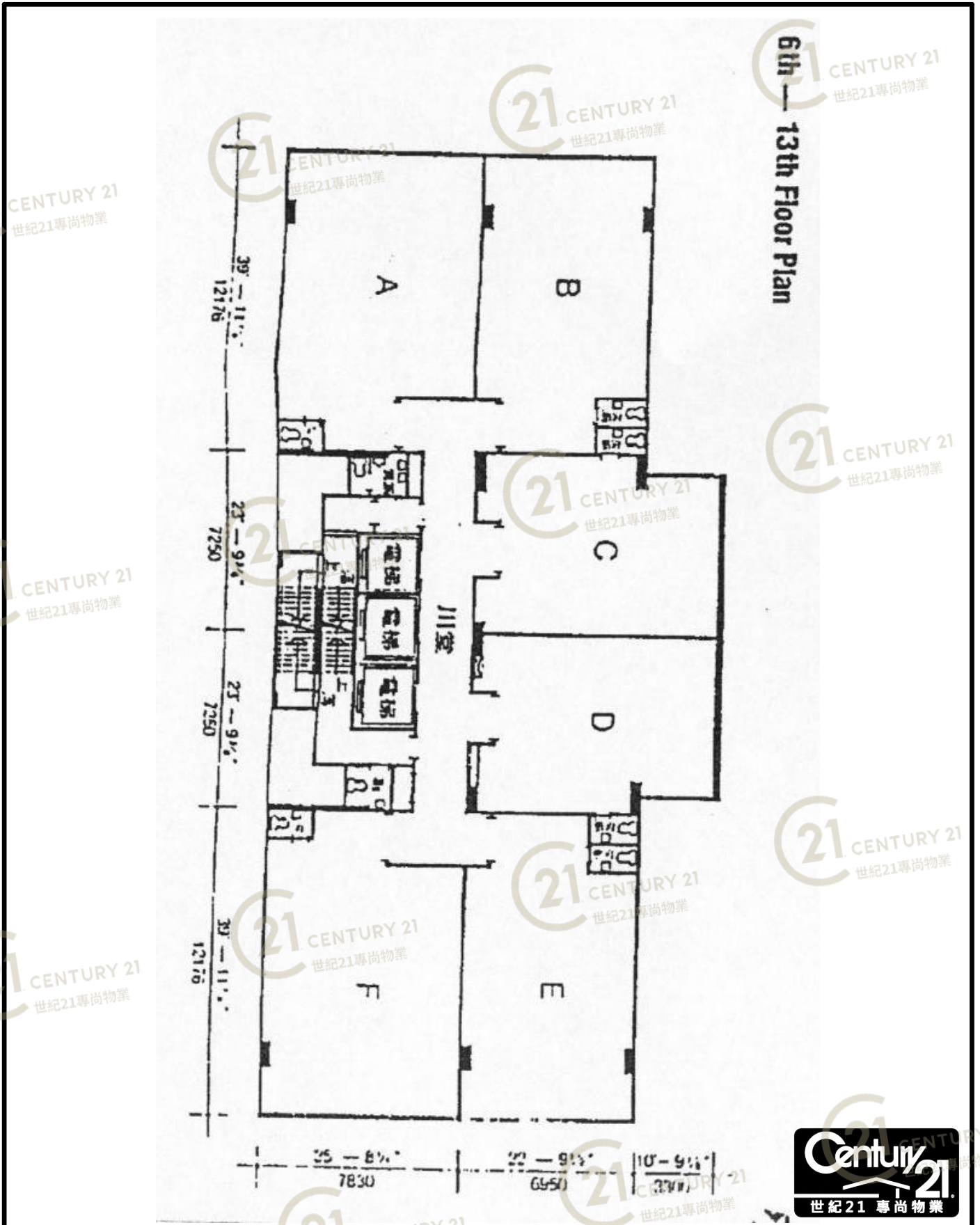
榮昌工業大廈 (官塘) Wing Cheung Industrial Building (KT)

NOT TO SCALE, FOR IDENTIFICATION PURPOSE ONLY

圖中所有數據比例，一概只作參考之用

平面圖

Floor Plan

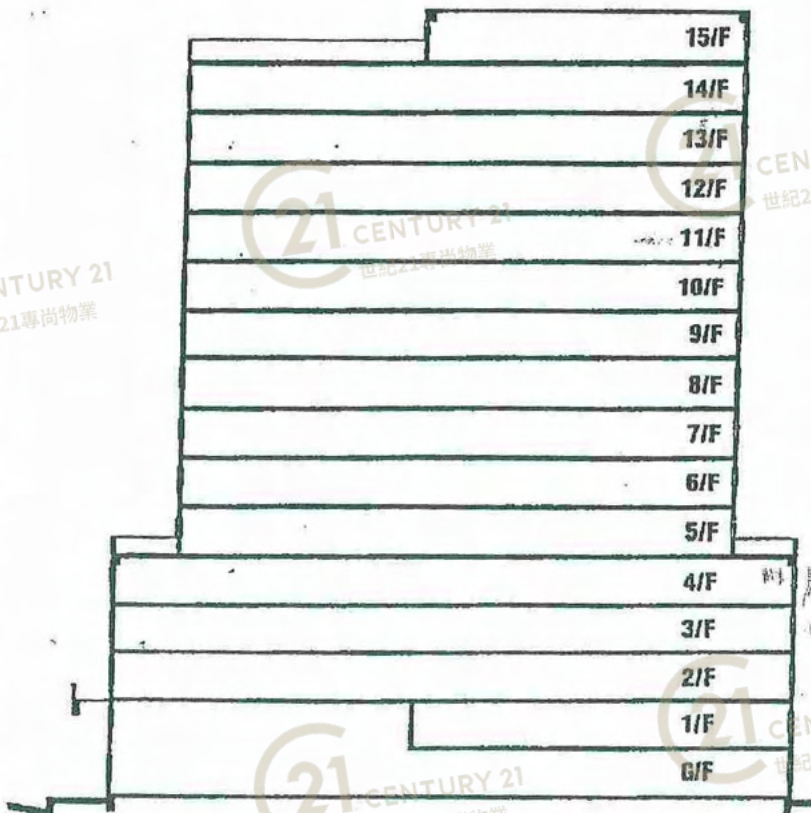


榮昌工業大廈 (官塘) Wing Cheung Industrial Building (KT)

NOT TO SCALE, FOR IDENTIFICATION PURPOSE ONLY

圖中所有數據比例，一概只作參考之用

榮昌工業大廈 (WING CHEUNG IND BLDG)



樓面載重	樓面高度
150 lbs/s.f.	2850 9' - 4 1/4"
150 lbs/s.f.	3000 9' - 10"
150 lbs/s.f.	3000 9' - 10"
150 lbs/s.f.	3000 9' - 10"
150 lbs/s.f.	3000 9' - 10"
150 lbs/s.f.	3000 9' - 10"
150 lbs/s.f.	3000 9' - 10"
150 lbs/s.f.	3000 9' - 10"
150 lbs/s.f.	3000 9' - 10"
150 lbs/s.f.	3000 9' - 10"
150 lbs/s.f.	3000 9' - 10"
200 lbs/s.f.	3000 9' - 10"
200 lbs/s.f.	3000 9' - 10"
200 lbs/s.f.	3000 9' - 10"
200 lbs/s.f.	3000 9' - 10"
A = 4900	16' - 0 1/4"
B = 3000	9' - 10"

榮昌工業大廈 (官塘) Wing Cheung Industrial Building (KT)

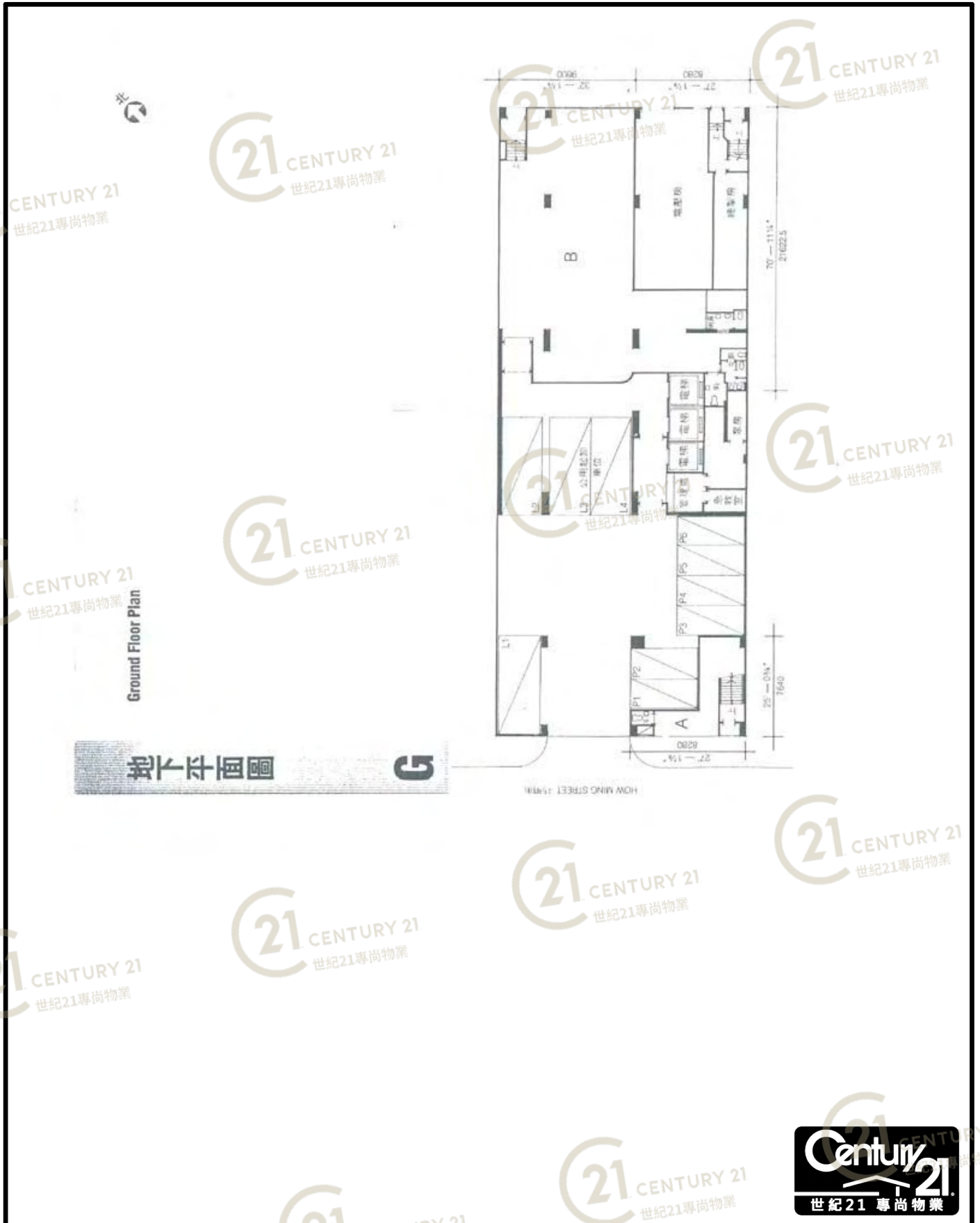
NOT TO SCALE, FOR IDENTIFICATION PURPOSE ONLY

圖中所有數據比例，一概只作參考之用



平面圖

Floor Plan



地下平面圖

G

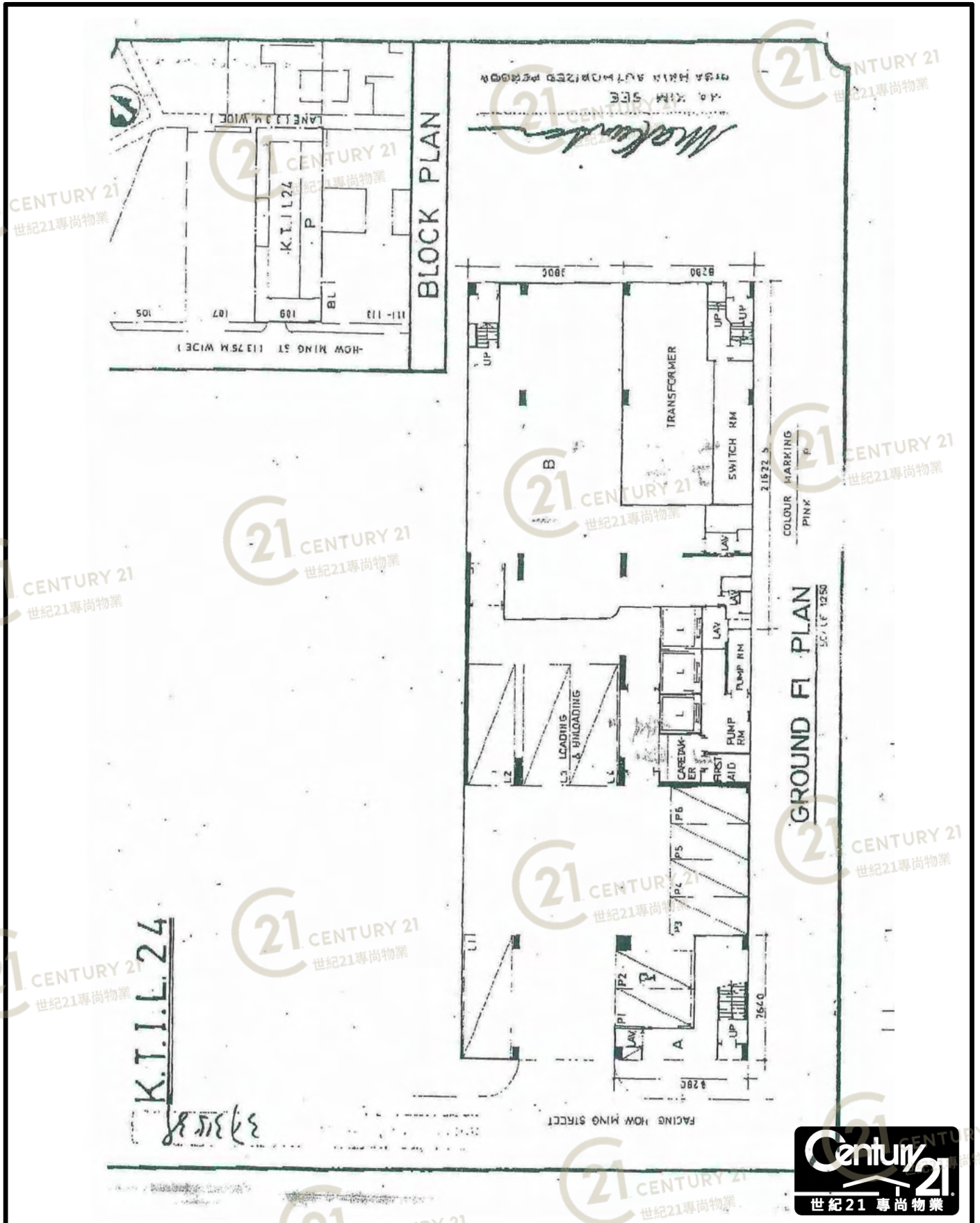
榮昌工業大廈 (官塘) Wing Cheung Industrial Building (KT)

NOT TO SCALE, FOR IDENTIFICATION PURPOSE ONLY
圖中所有數據比例，一概只作參考之用



平面圖

Floor Plan



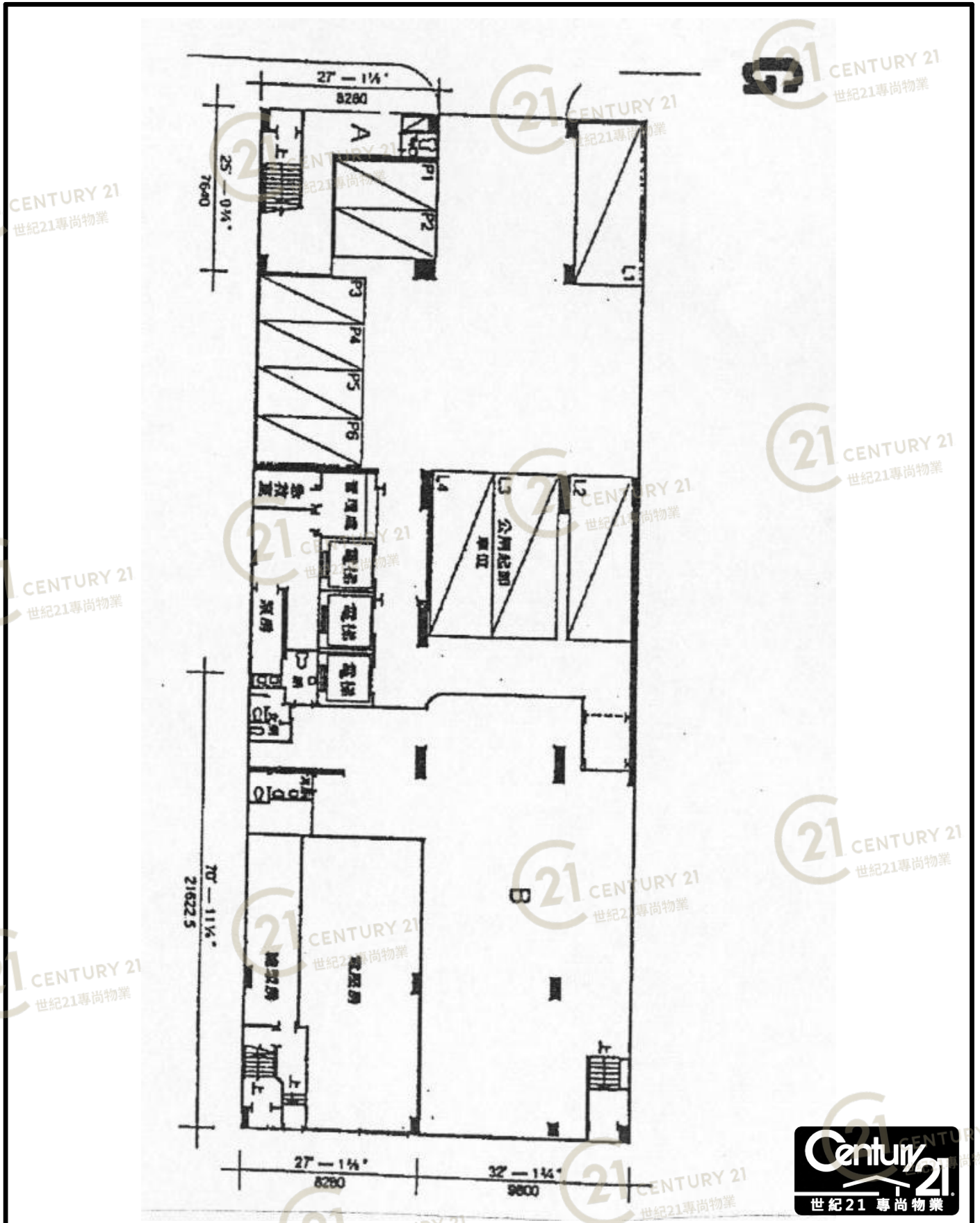
榮昌工業大廈 (官塘) Wing Cheung Industrial Building (KT)

NOT TO SCALE, FOR IDENTIFICATION PURPOSE ONLY

圖中所有數據比例，一概只作參考之用

平面圖

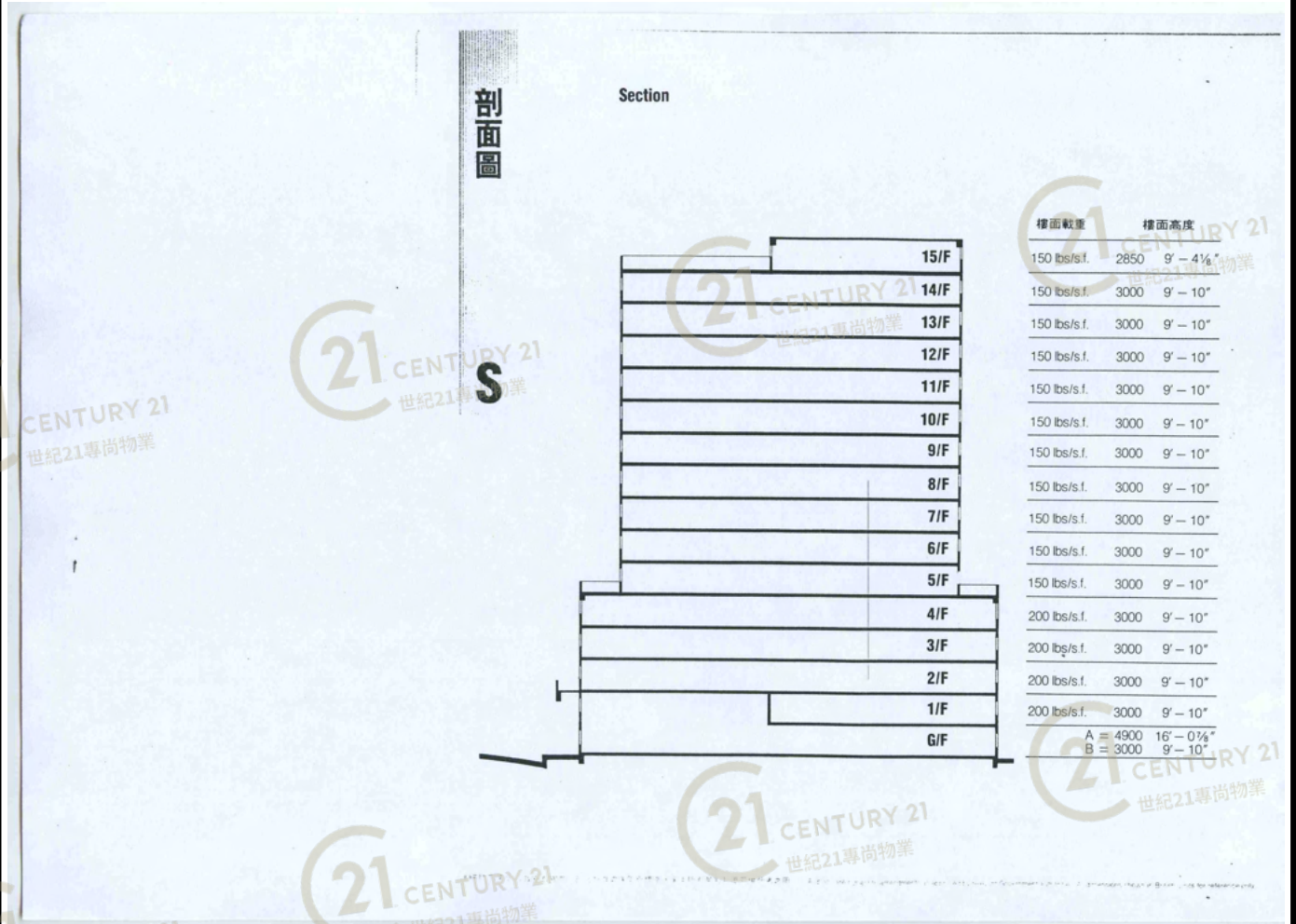
Floor Plan



榮昌工業大廈 (官塘) Wing Cheung Industrial Building (KT)

NOT TO SCALE, FOR IDENTIFICATION PURPOSE ONLY

圖中所有數據比例，一概只作參考之用



榮昌工業大廈 (官塘) Wing Cheung Industrial Building (KT)

NOT TO SCALE, FOR IDENTIFICATION PURPOSE ONLY

圖中所有數據比例，一概只作參考之用

