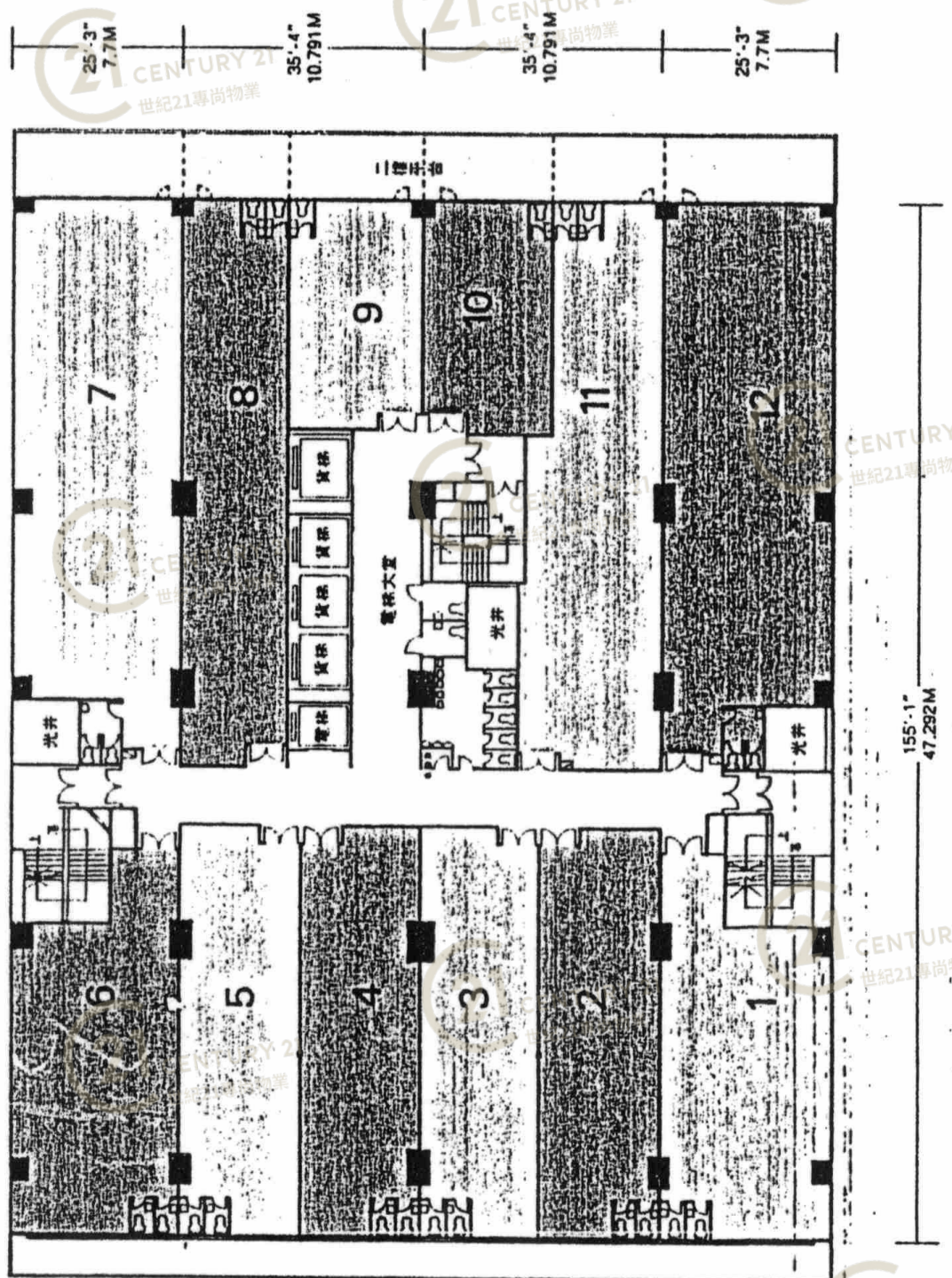


1樓至3樓平面圖 1st to 3rd Floor Plan



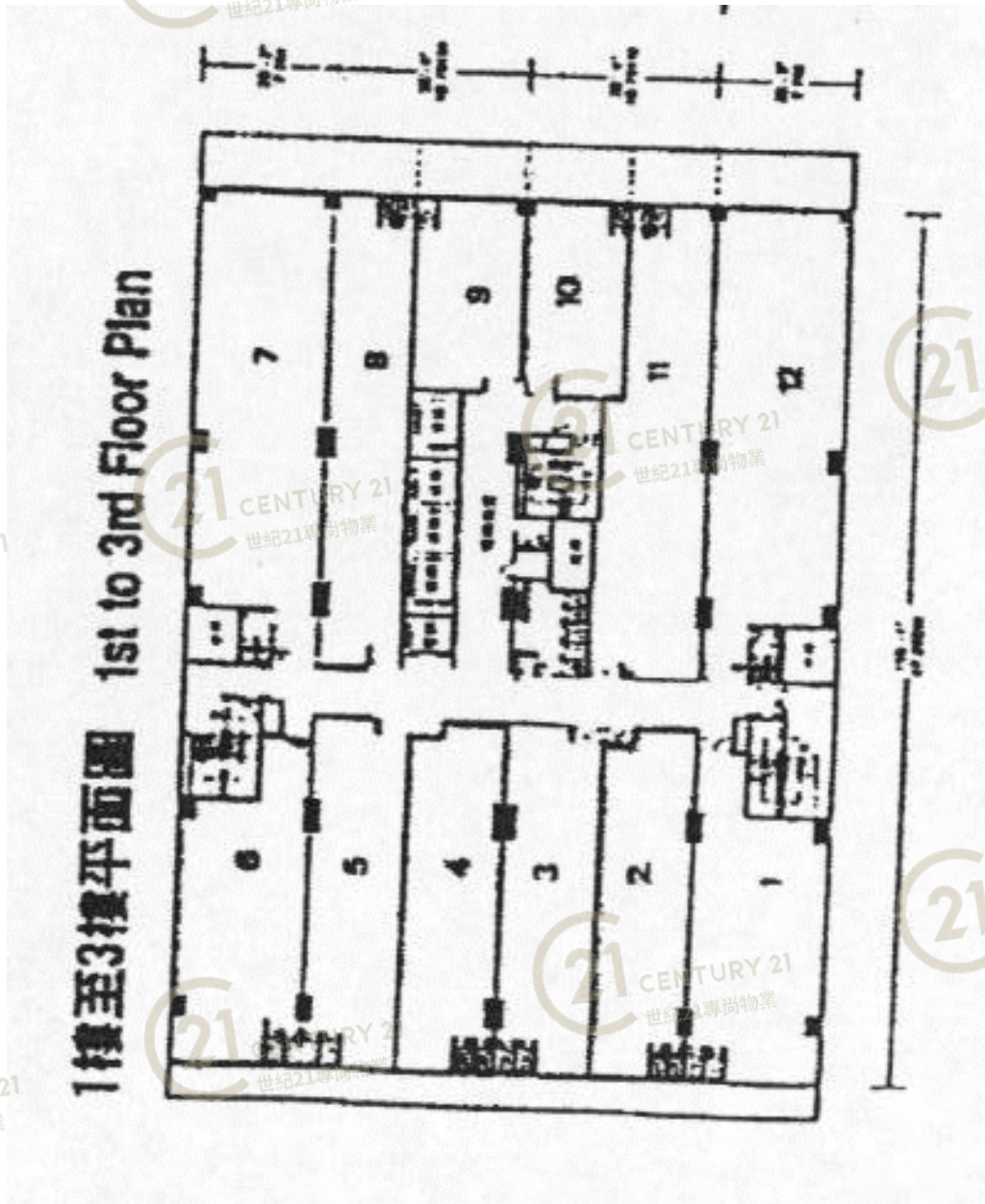
鴻泰工業大廈 Hung Tai Industrial Building

NOT TO SCALE, FOR IDENTIFICATION PURPOSE ONLY
圖中所有數據比例，一概只作參考之用



平面圖

Floor Plan



鴻泰工業大廈 Hung Tai Industrial Building

NOT TO SCALE, FOR IDENTIFICATION PURPOSE ONLY

圖中所有數據比例，一概只作參考之用

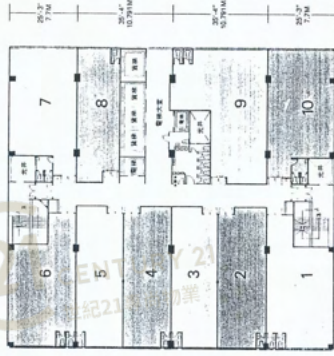


平面圖

Floor Plan

鴻泰工業大廈

13樓平面圖 13th Floor Plan



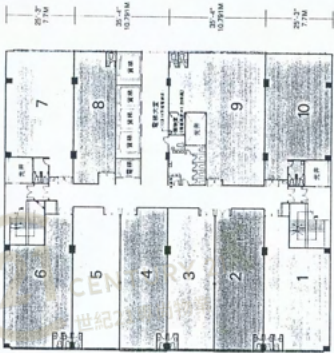
單位	建築面積(呎)	實用面積(呎)
1	1,441	1,101
2	1,207	922
3	1,208	922
4	1,208	922
5	1,207	922
6	1,441	1,101
7	1,522	1,163
8	1,021	780
9	1,883	1,438
10	1,522	1,163

全層面積：13,660呎

單位	建築面積(呎)	實用面積(呎)
1	1,441	1,101
2	1,207	922
3	1,208	922
4	1,208	922
5	1,207	922
6	1,441	1,101
7	1,522	1,163
8	1,021	780
9	1,813	1,385
10	1,522	1,163

全層面積：13,590呎

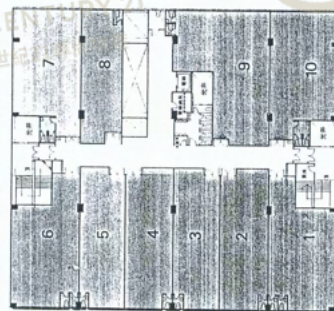
12樓平面圖 12th Floor Plan



單位	建築面積(呎)	實用面積(呎)
1	1,441	1,101
2	1,207	922
3	1,208	922
4	1,208	922
5	1,207	922
6	1,441	1,101
7	1,522	1,163
8	1,021	780
9	1,883	1,438
10	1,522	1,163

全層面積：13,660呎

14樓平面圖 14th Floor Plan



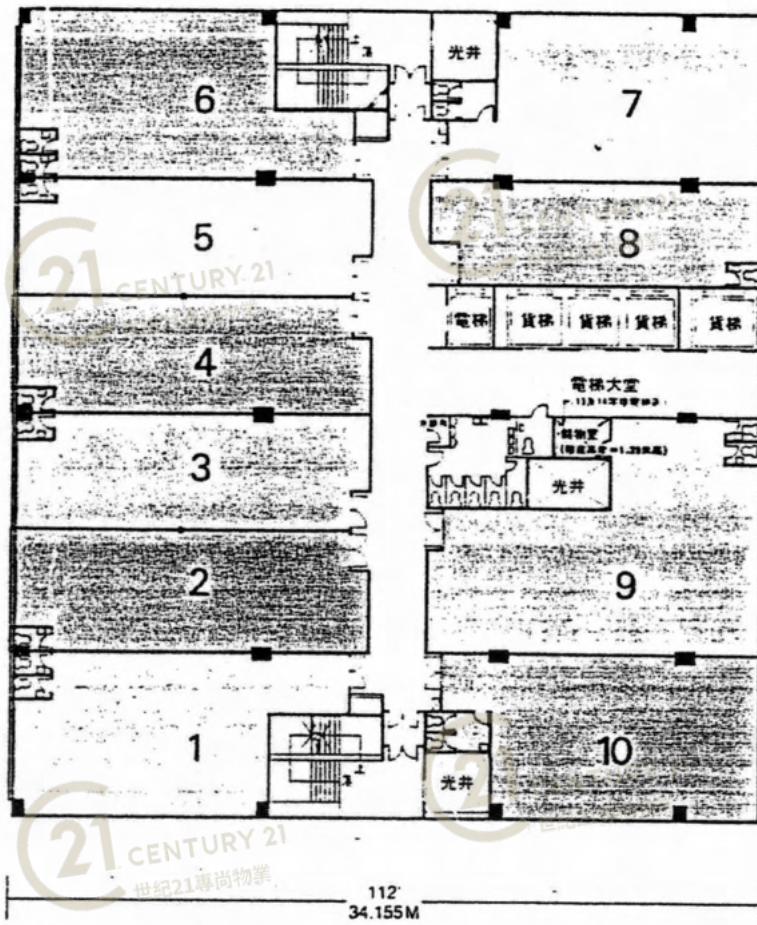
所有圖紙訂正圖則以政府部門核准之圖則為準。
All plans are subject to the amendments to be approved by the Building Authority.



鴻泰工業大廈 Hung Tai Industrial Building

NOT TO SCALE, FOR IDENTIFICATION PURPOSE ONLY
圖中所有數據比例，一概只作參考之用

12樓平面圖 12th Floor Plan

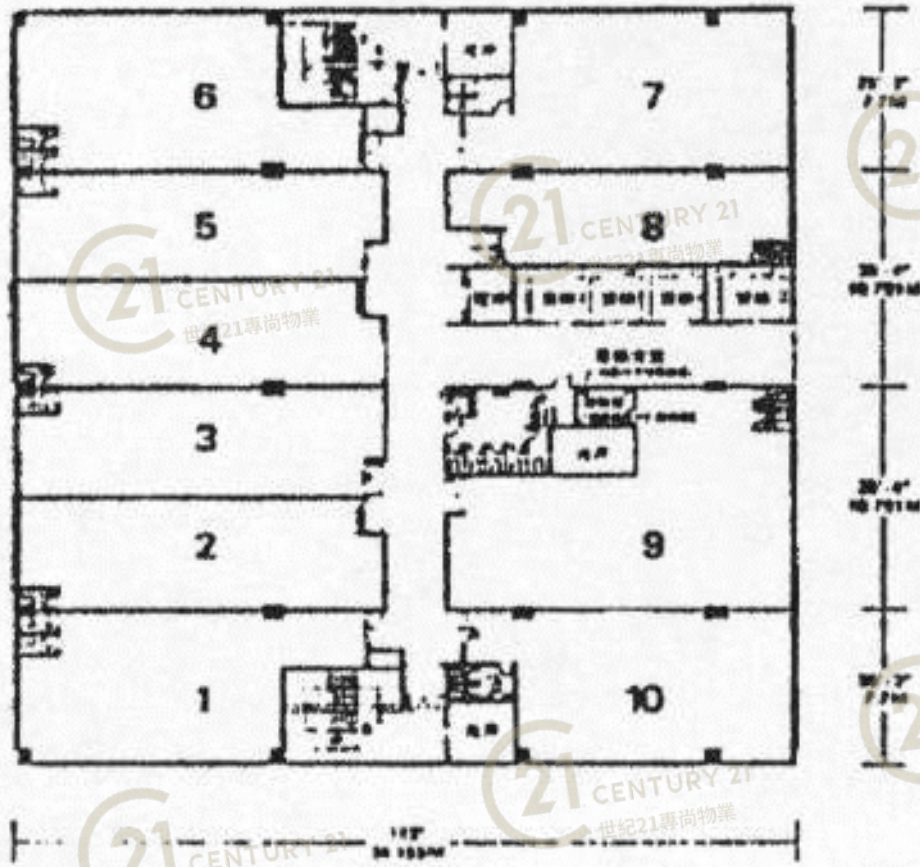


鴻泰工業大廈 Hung Tai Industrial Building

NOT TO SCALE, FOR IDENTIFICATION PURPOSE ONLY

圖中所有數據比例，一概只作參考之用

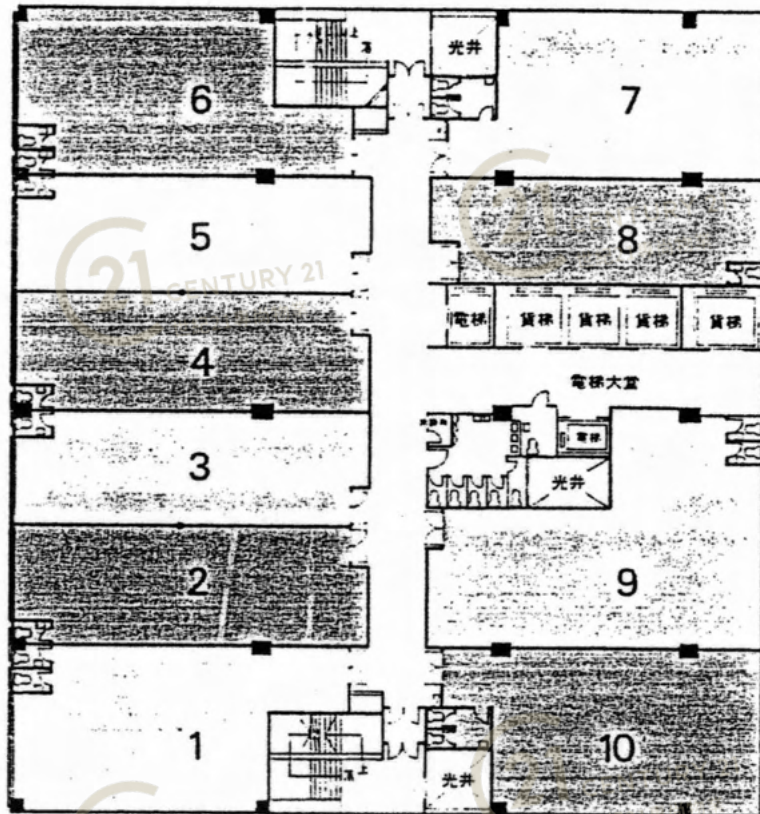
12樓平面圖 12th Floor Plan



鴻泰工業大廈 Hung Tai Industrial Building

NOT TO SCALE, FOR IDENTIFICATION PURPOSE ONLY
圖中所有數據比例，一概只作參考之用

13樓平面圖 13th Floor Plan



25'-3" 7.7M
 35'-4" 10.791M
 35'-4" 10.791M
 25'-3" 7.7M

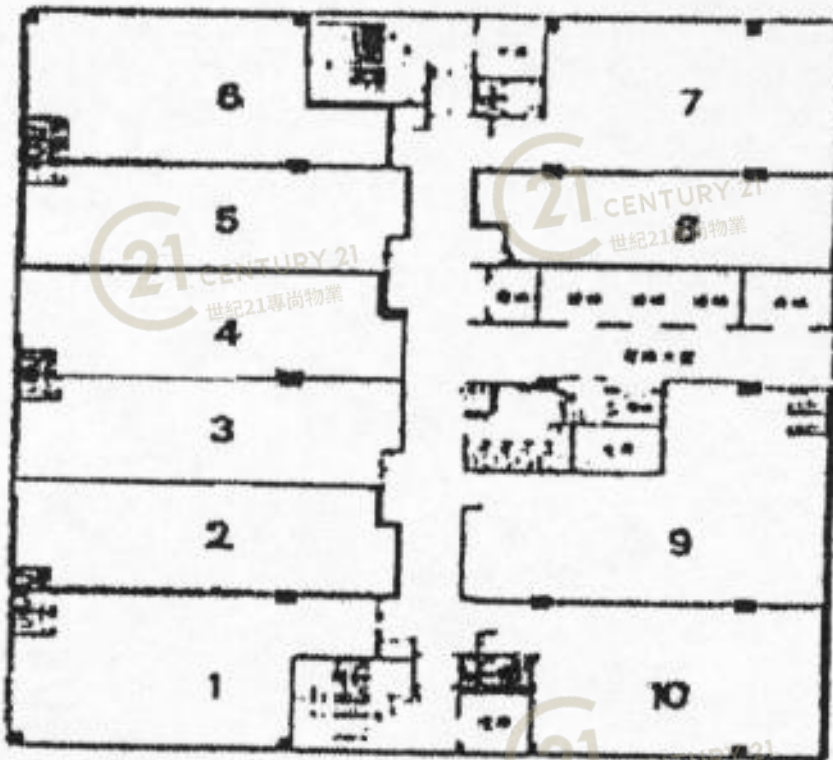
112' 34.155M



鴻泰工業大廈 Hung Tai Industrial Building

NOT TO SCALE, FOR IDENTIFICATION PURPOSE ONLY
 圖中所有數據比例，一概只作參考之用

13樓平面圖 13th Floor Plan



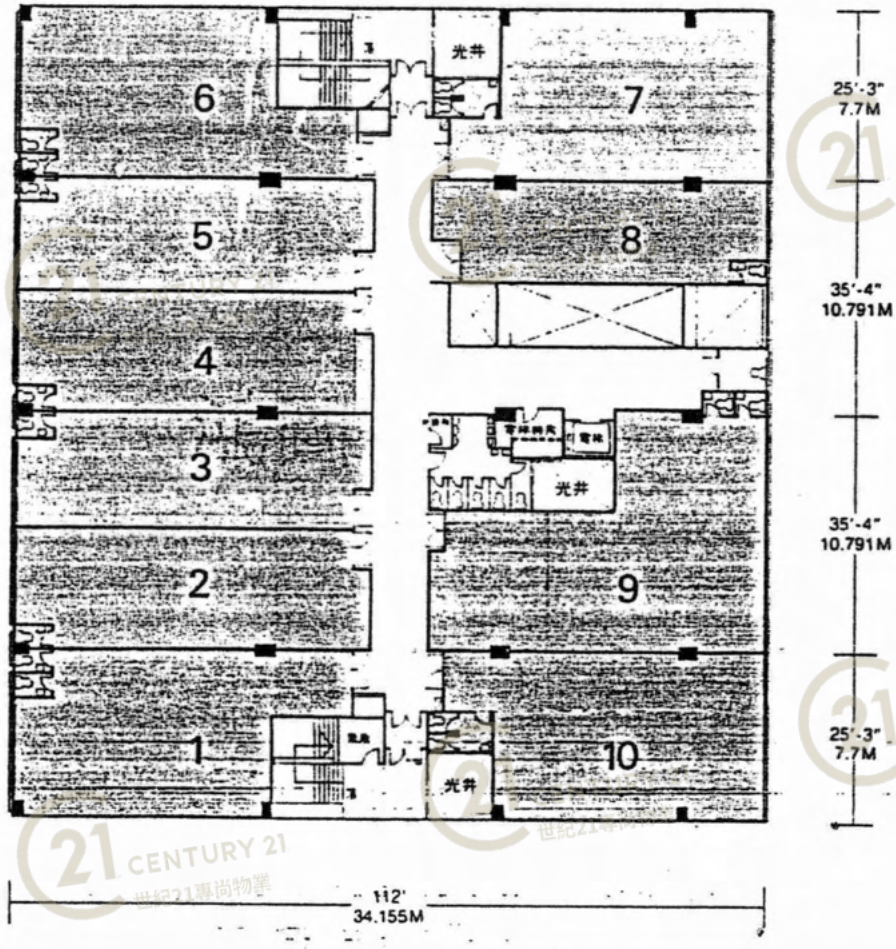
鴻泰工業大廈 Hung Tai Industrial Building

NOT TO SCALE, FOR IDENTIFICATION PURPOSE ONLY

圖中所有數據比例，一概只作參考之用



14樓平面圖 14th Floor Plan



鴻泰工業大廈 Hung Tai Industrial Building

NOT TO SCALE, FOR IDENTIFICATION PURPOSE ONLY

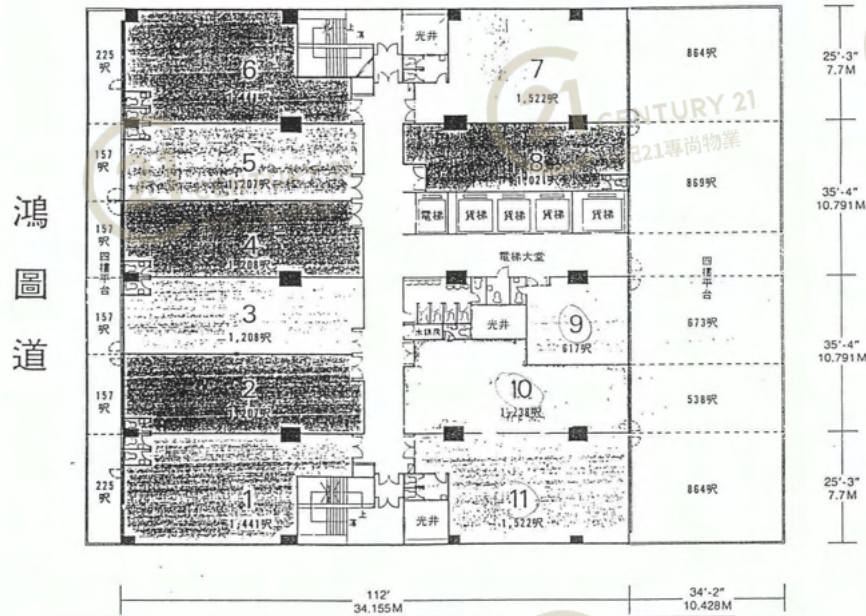
圖中所有數據比例，一概只作參考之用



平面圖

Floor Plan

4樓至11樓平面圖 4th to 11th Floor Plan



鴻泰工業大廈 Hung Tai Industrial Building

NOT TO SCALE, FOR IDENTIFICATION PURPOSE ONLY

圖中所有數據比例，一概只作參考之用

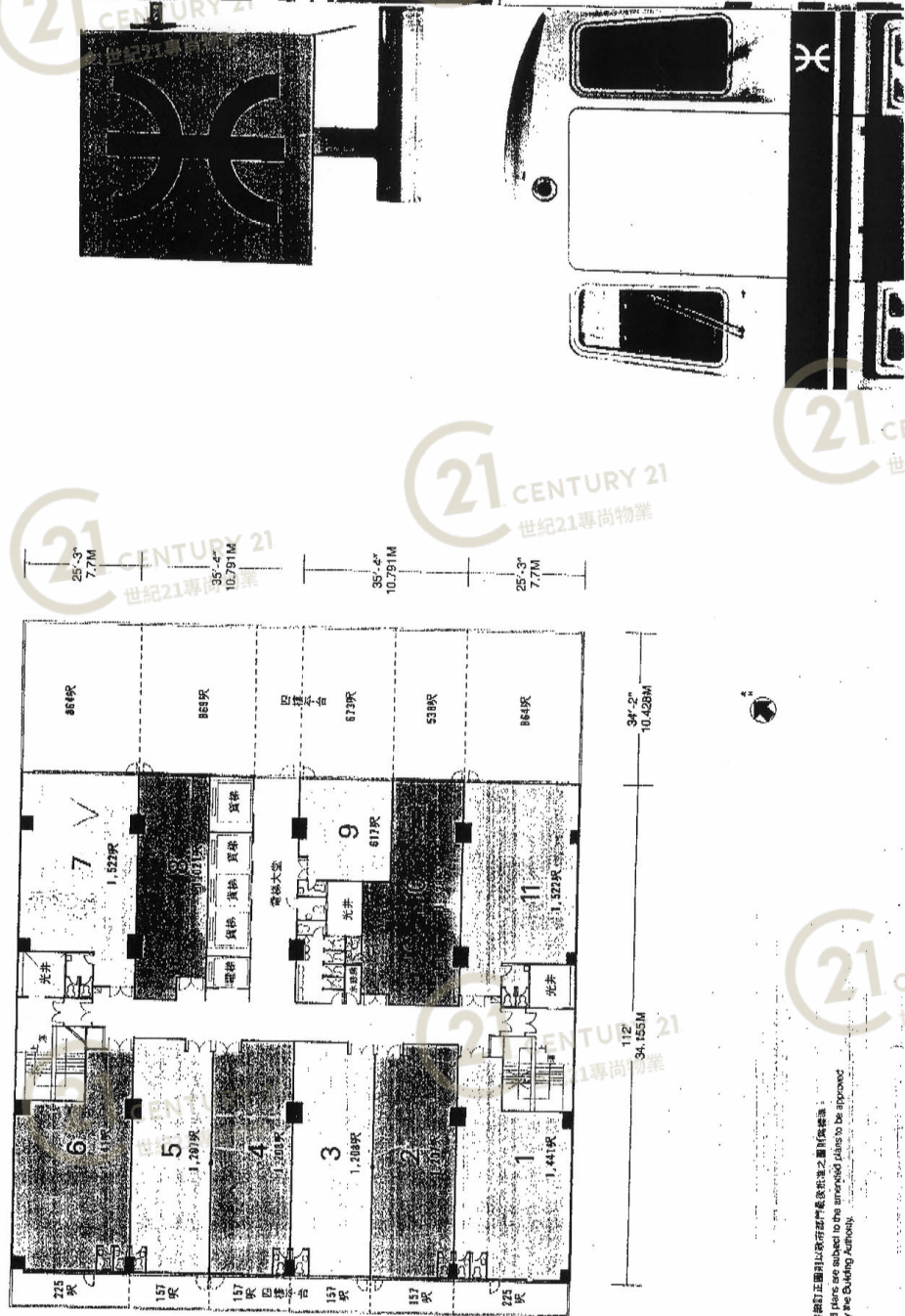


平面圖

Floor Plan

HUNG TAI INDUSTRIAL BUILDING

4樓至11樓平面圖 4th to 11th Floor Plan



鴻圖道 X

此圖則正圖可以改訂或作其他用途之圖則(未經批准)
All plans are subject to the amended plans to be approved
by the Building Authority.

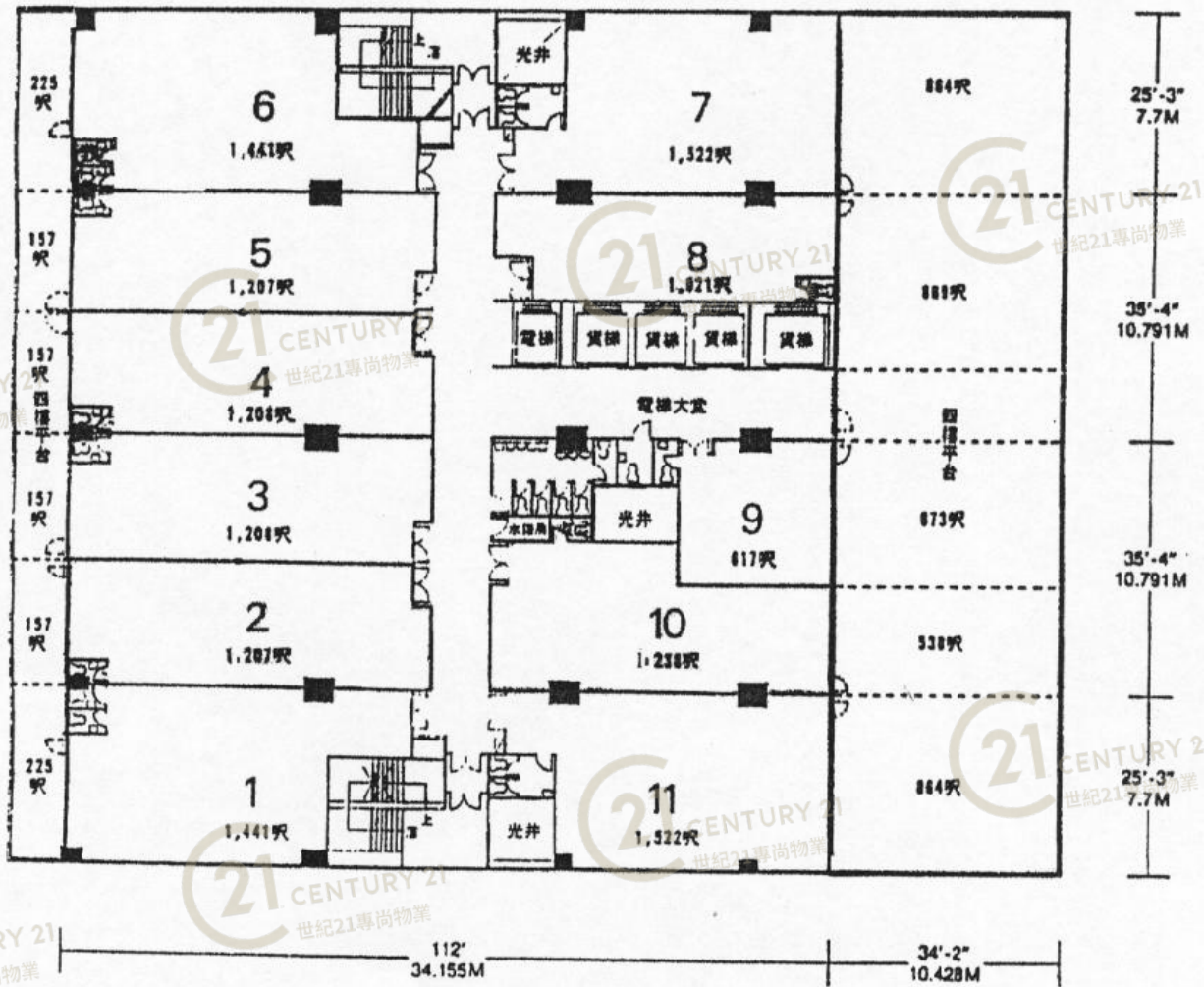


鴻泰工業大廈 Hung Tai Industrial Building

NOT TO SCALE, FOR IDENTIFICATION PURPOSE ONLY

圖中所有數據比例，一概只作參考之用

4樓至11樓平面圖 4th to 11th Floor Plan



鴻
圖
道

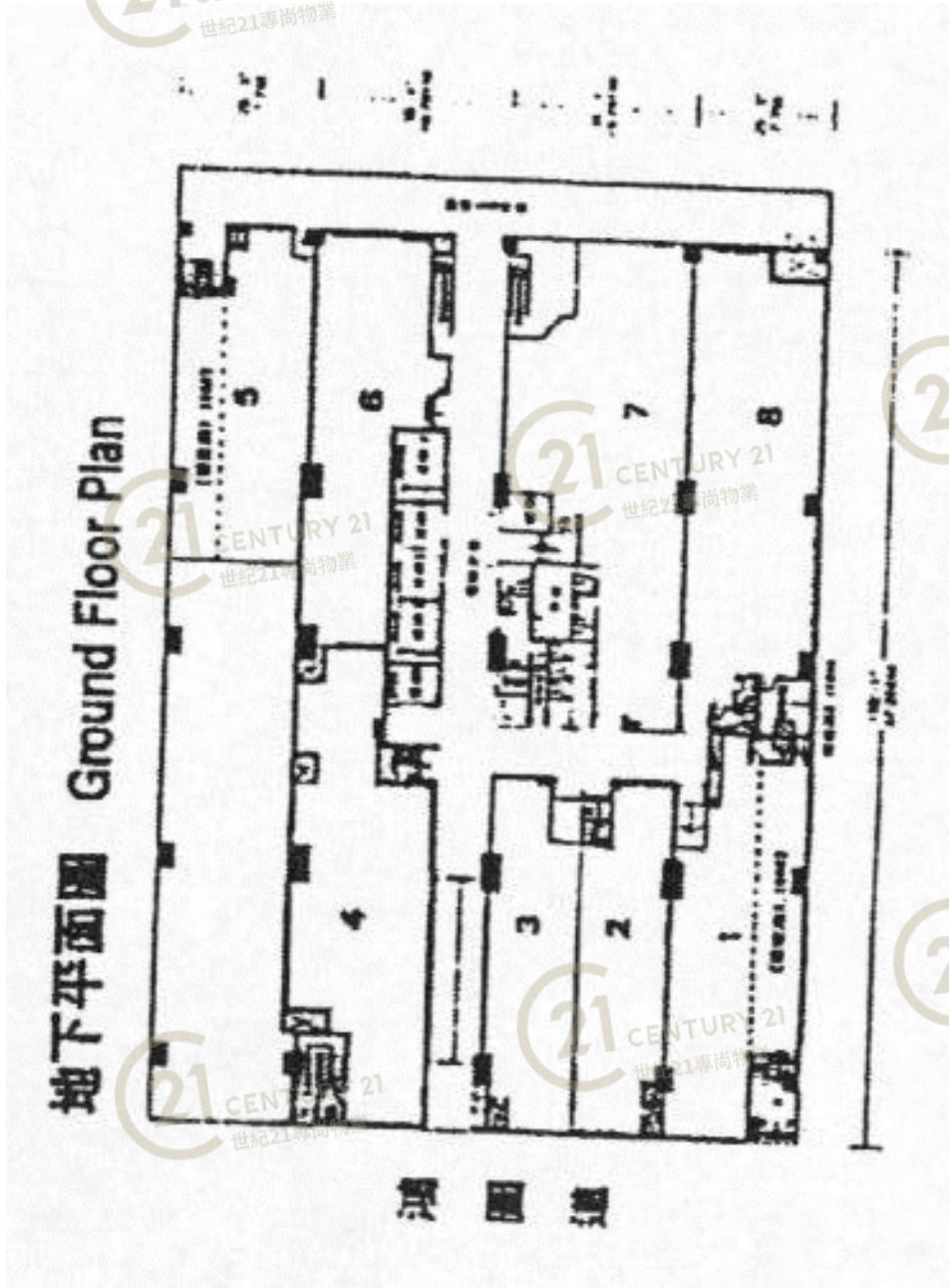


鴻泰工業大廈 Hung Tai Industrial Building

NOT TO SCALE, FOR IDENTIFICATION PURPOSE ONLY
圖中所有數據比例，一概只作參考之用

平面圖

Floor Plan



Ground Floor Plan
地下平面圖

鴻泰工業大廈

鴻泰工業大廈 Hung Tai Industrial Building

NOT TO SCALE, FOR IDENTIFICATION PURPOSE ONLY

圖中所有數據比例，一概只作參考之用



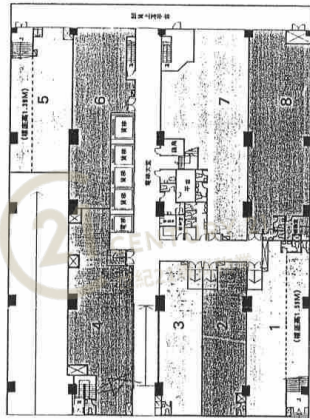
平面圖

Floor Plan

地下	
單位	樓層面積(呎) / 實用面積(呎)
1	1,665 / 1,546
2	1,153 / 1,080
3	1,157 / 1,078
4	1,533 / 1,443
5	1,454 / 1,383
6	1,546 / 1,443
7	2,319 / 2,160
8	2,221 / 2,078

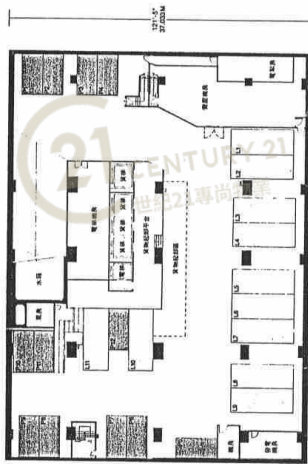
全層面積：13,477呎

地下平面圖 Ground Floor Plan



鴻圖道

低層地下平面圖 Basement Floor Plan



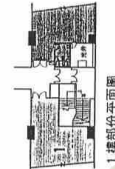
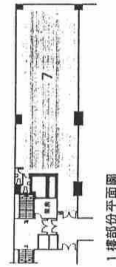
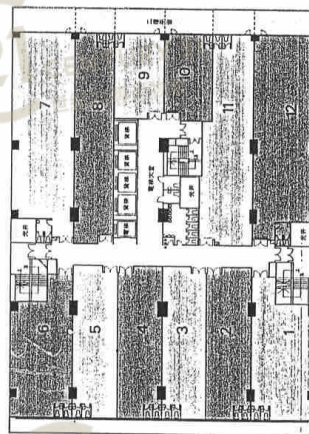
4樓至11樓	
單位	樓層面積(呎) / 實用面積(呎)
1	1,441 / 1,101
2	1,207 / 922
3	1,208 / 922
4	1,208 / 922
5	1,207 / 922
6	1,441 / 1,101
7	1,522 / 1,163
8	1,207 / 922
9	1,617 / 1,480
10	1,228 / 946
11	1,522 / 1,163

全層面積：13,632呎
4樓另平台4,886呎

1樓至3樓	
單位	樓層面積(呎) / 實用面積(呎)
1	1,641 / 1,314
2	1,348 / 1,000
3	1,348 / 1,000
4	1,348 / 1,000
5	1,348 / 1,000
6	1,641 / 1,314
7	2,027 / 1,494
8	1,348 / 1,000
9	1,641 / 1,314
10	1,348 / 1,000
11	1,591 / 1,157
12	1,348 / 1,000

全層面積：18,824呎
2樓另0.018呎另平台1,166呎
3樓另0.018呎
*1樓建築面積2,337呎，實用面積1,847呎

1樓至3樓平面圖 1st to 3rd Floor Plan



此圖訂正圖則以政府部門最後批准之圖則為準。
All plans are subject to the amended plans to be approved by the Building Authority.

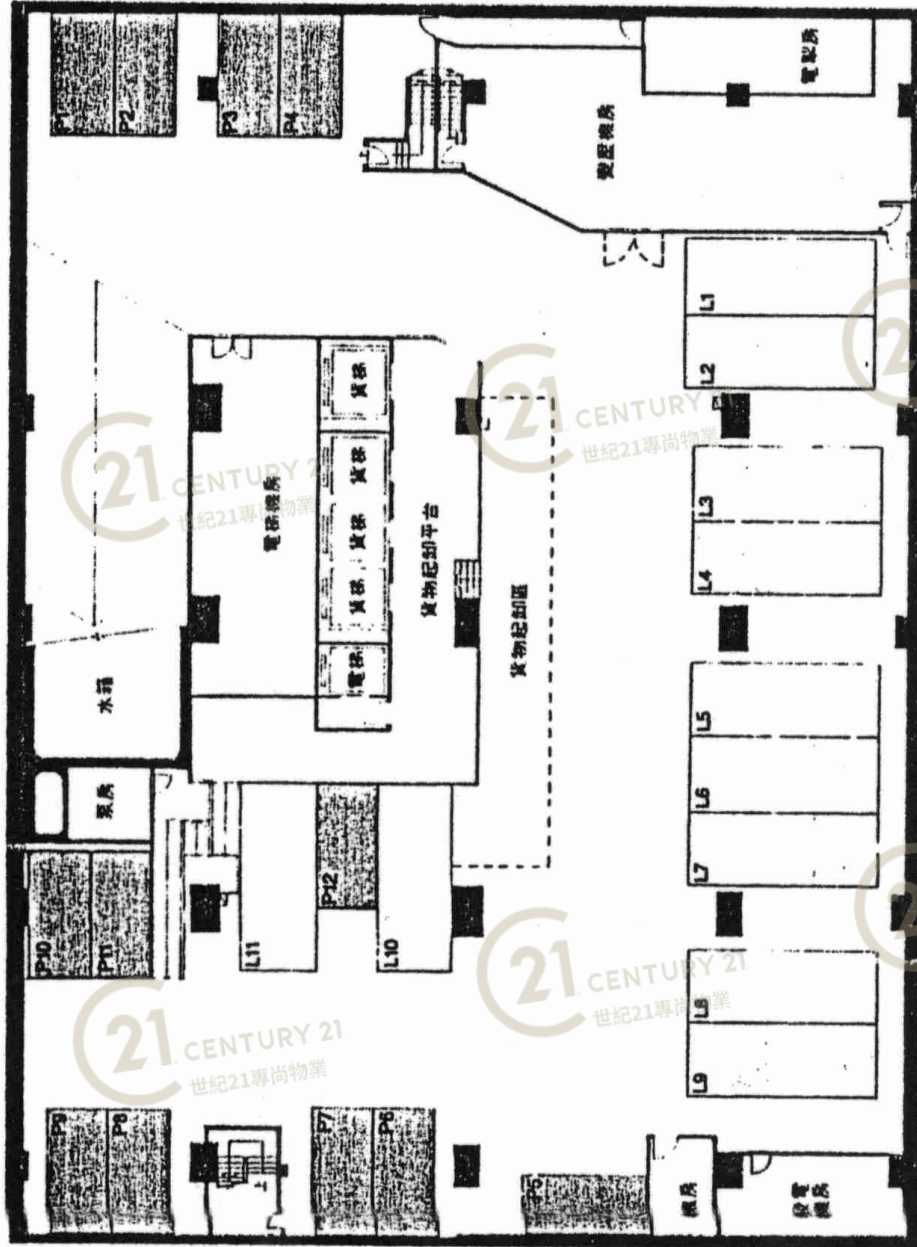


鴻泰工業大廈 Hung Tai Industrial Building

NOT TO SCALE, FOR IDENTIFICATION PURPOSE ONLY

圖中所有數據比例，一概只作參考之用

低層地下平面圖 Basement Floor Plan



121'-5"
37.033M

164'-11"
50.292M



鴻泰工業大廈 Hung Tai Industrial Building

NOT TO SCALE, FOR IDENTIFICATION PURPOSE ONLY
圖中所有數據比例，一概只作參考之用

