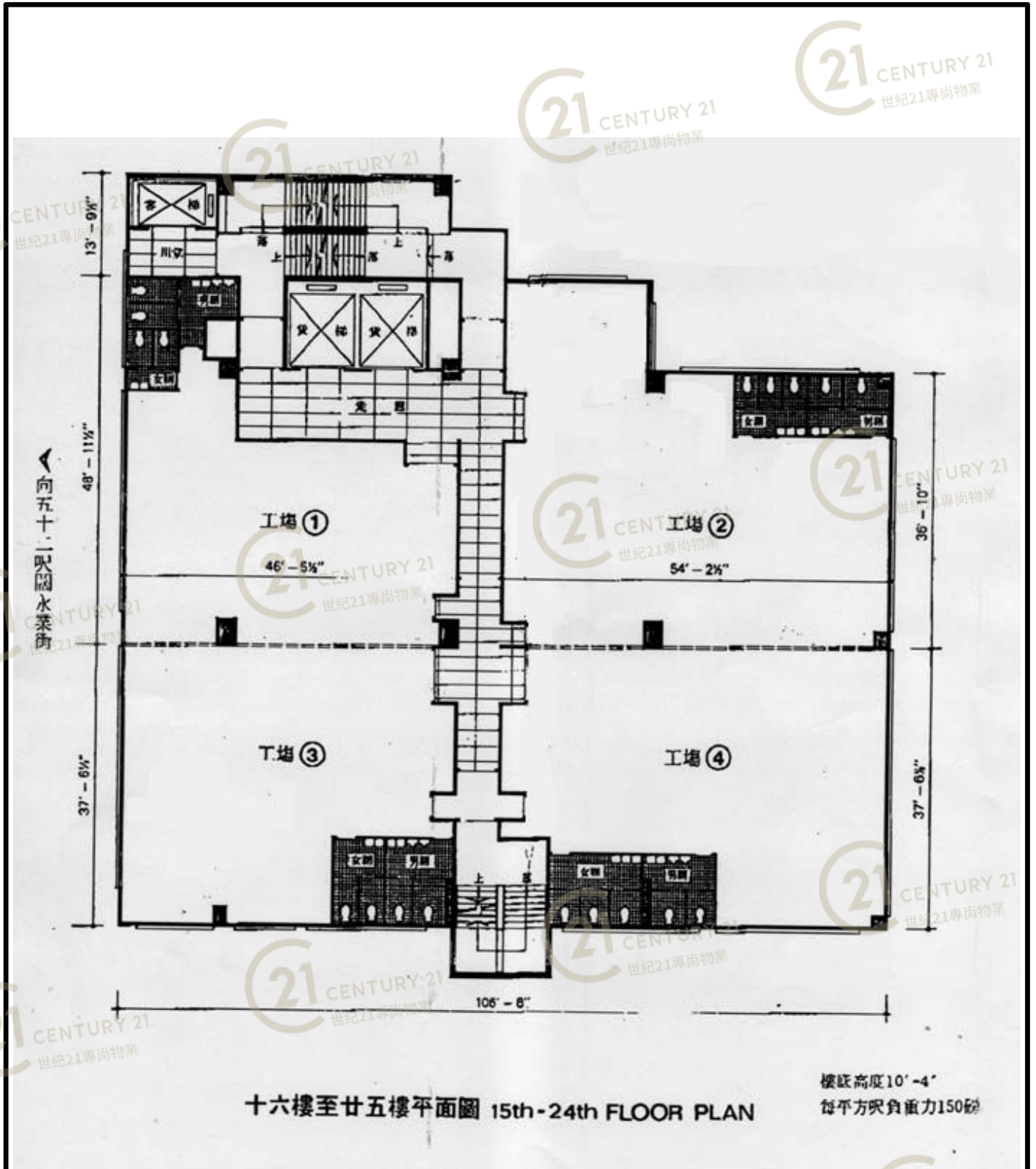


平面圖

Floor Plan



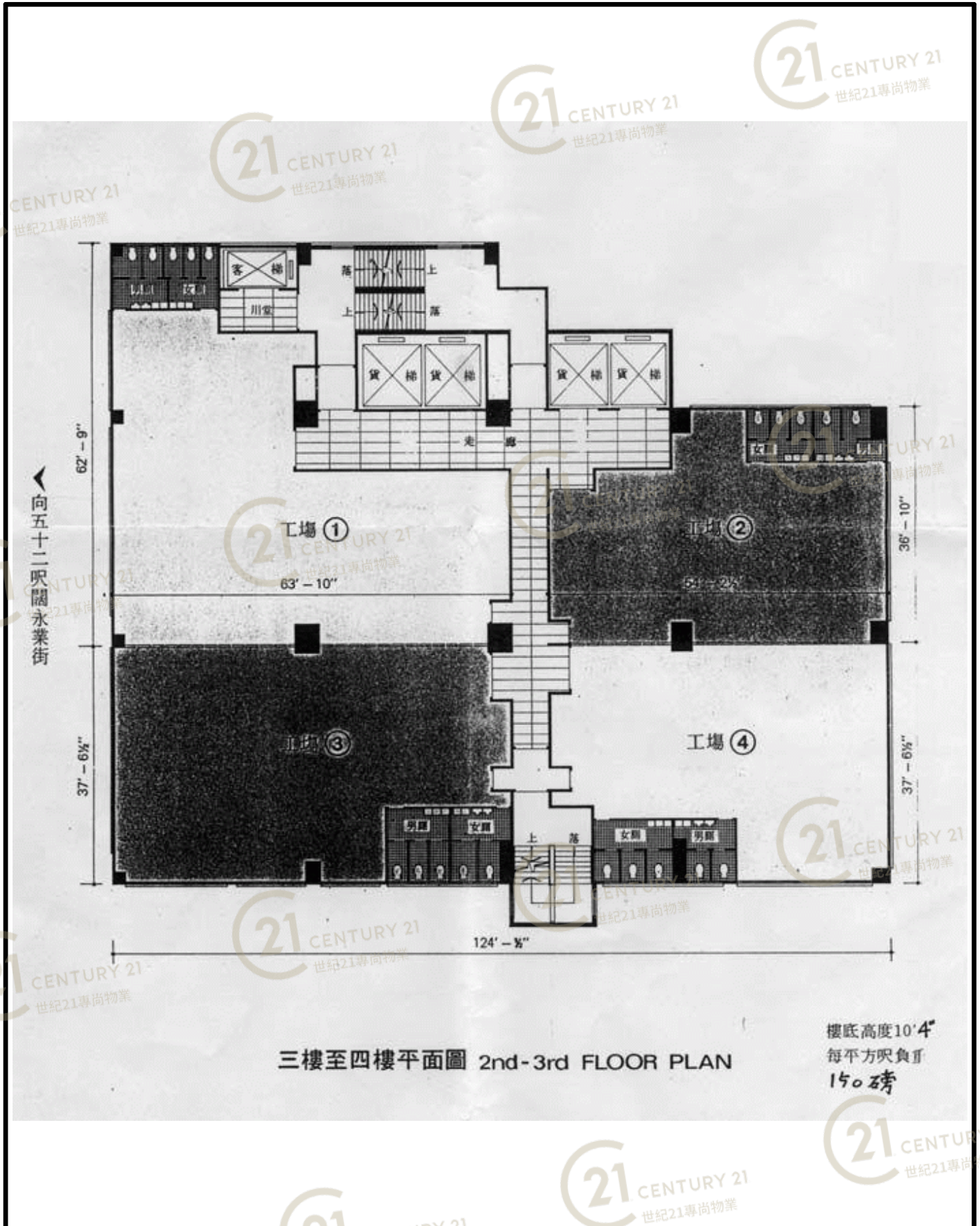
永豐工業大廈 Wealthy Industrial Building

NOT TO SCALE, FOR IDENTIFICATION PURPOSE ONLY

圖中所有數據比例，一概只作參考之用

平面圖

Floor Plan



三樓至四樓平面圖 2nd-3rd FLOOR PLAN

樓底高度10'4"
每平方呎負重
150磅

永豐工業大廈 Wealthy Industrial Building

NOT TO SCALE, FOR IDENTIFICATION PURPOSE ONLY

圖中所有數據比例，一概只作參考之用

外觀圖

Building Outlook



永豐工業大廈 Wealthy Industrial Building

NOT TO SCALE, FOR IDENTIFICATION PURPOSE ONLY

圖中所有數據比例，一概只作參考之用

外觀圖

Building Outlook



永豐工業大廈 Wealthy Industrial Building

NOT TO SCALE, FOR IDENTIFICATION PURPOSE ONLY

圖中所有數據比例，一概只作參考之用

外觀圖

Building Outlook



永豐工業大廈 Wealthy Industrial Building

NOT TO SCALE, FOR IDENTIFICATION PURPOSE ONLY

圖中所有數據比例，一概只作參考之用

外觀圖

Building Outlook



永豐工業大廈 Wealthy Industrial Building

NOT TO SCALE, FOR IDENTIFICATION PURPOSE ONLY

圖中所有數據比例，一概只作參考之用