

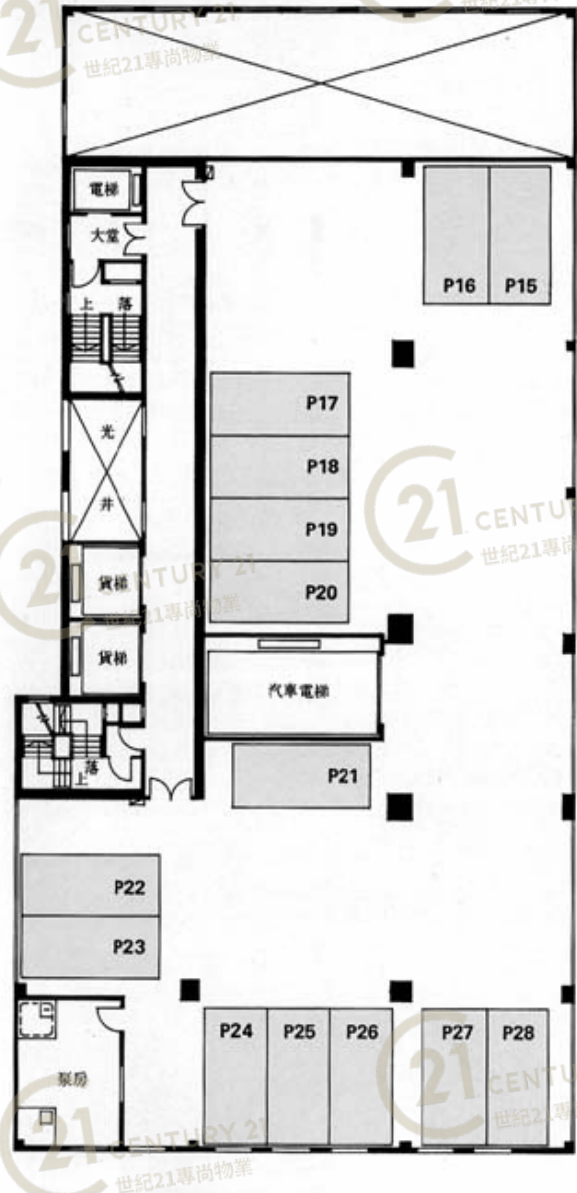
平面圖

Floor Plan



一樓平面圖
1ST FL. PLAN

樓層高度3.15m.(約10呎4吋)



二樓平面圖
2ND FL. PLAN

樓層高度3.15m.(約10呎4吋)

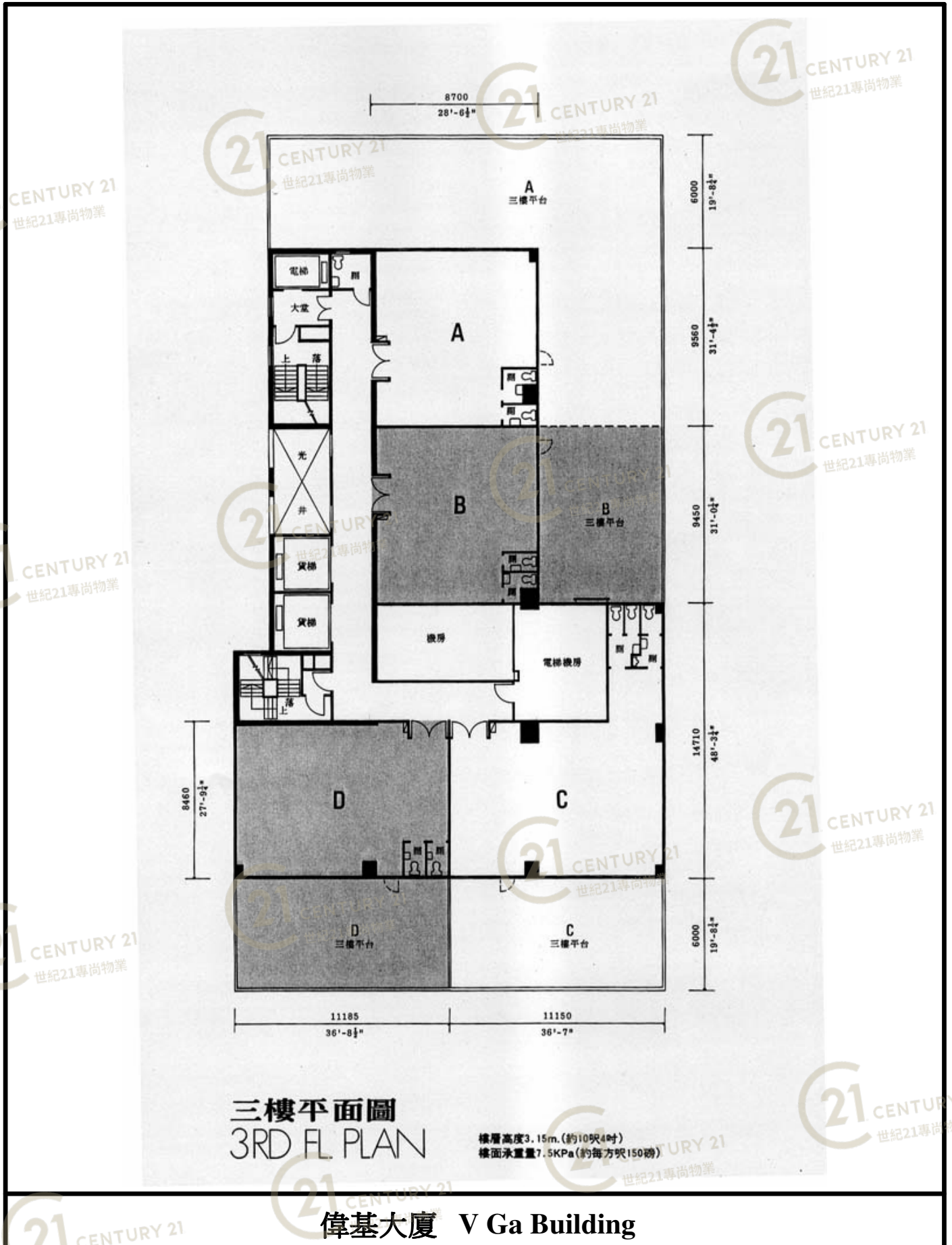
偉基大廈 V Ga Building

NOT TO SCALE, FOR IDENTIFICATION PURPOSE ONLY

圖中所有數據比例,一概只作參考之用

平面圖

Floor Plan



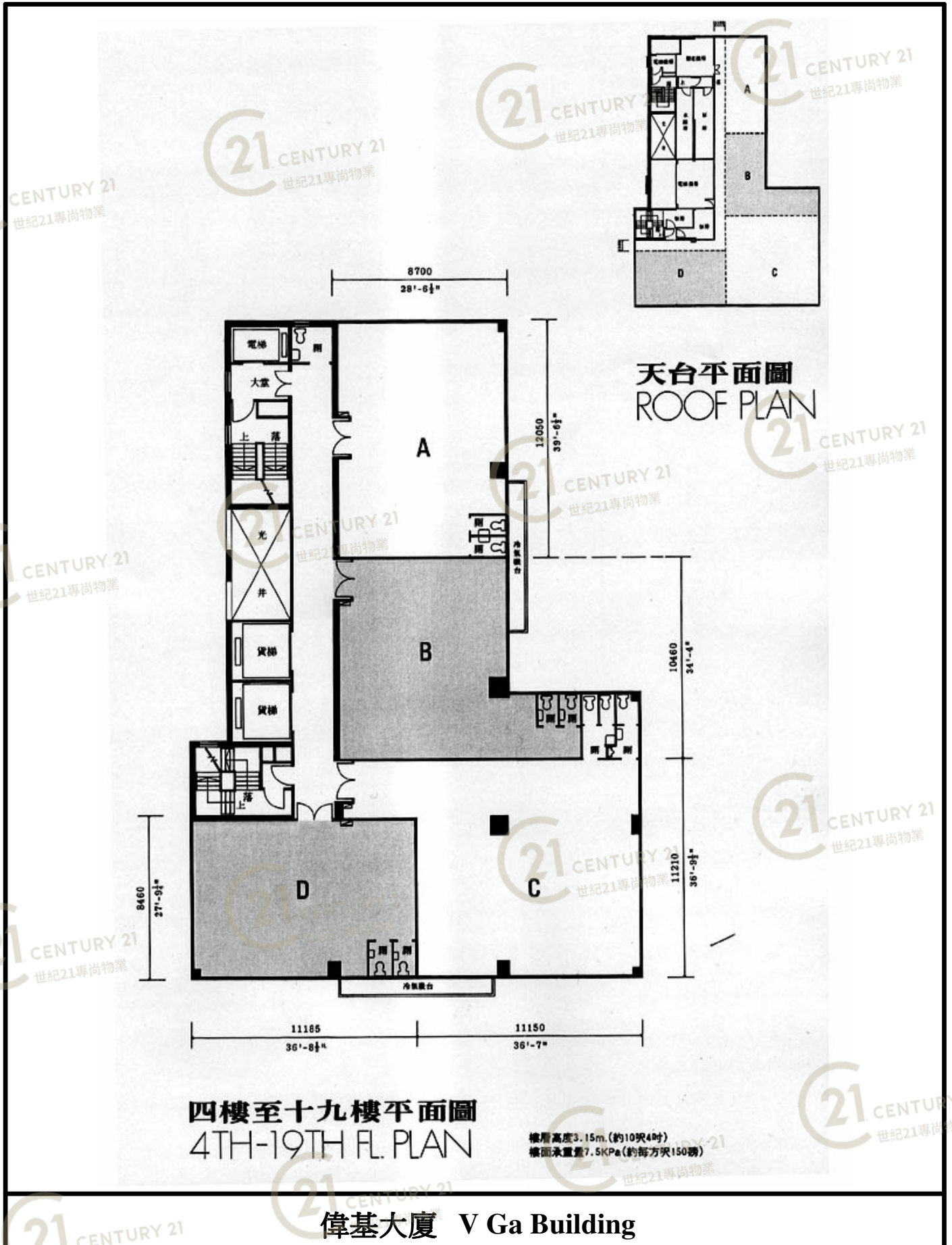
偉基大廈 V Ga Building

NOT TO SCALE, FOR IDENTIFICATION PURPOSE ONLY

圖中所有數據比例，一概只作參考之用

平面圖

Floor Plan

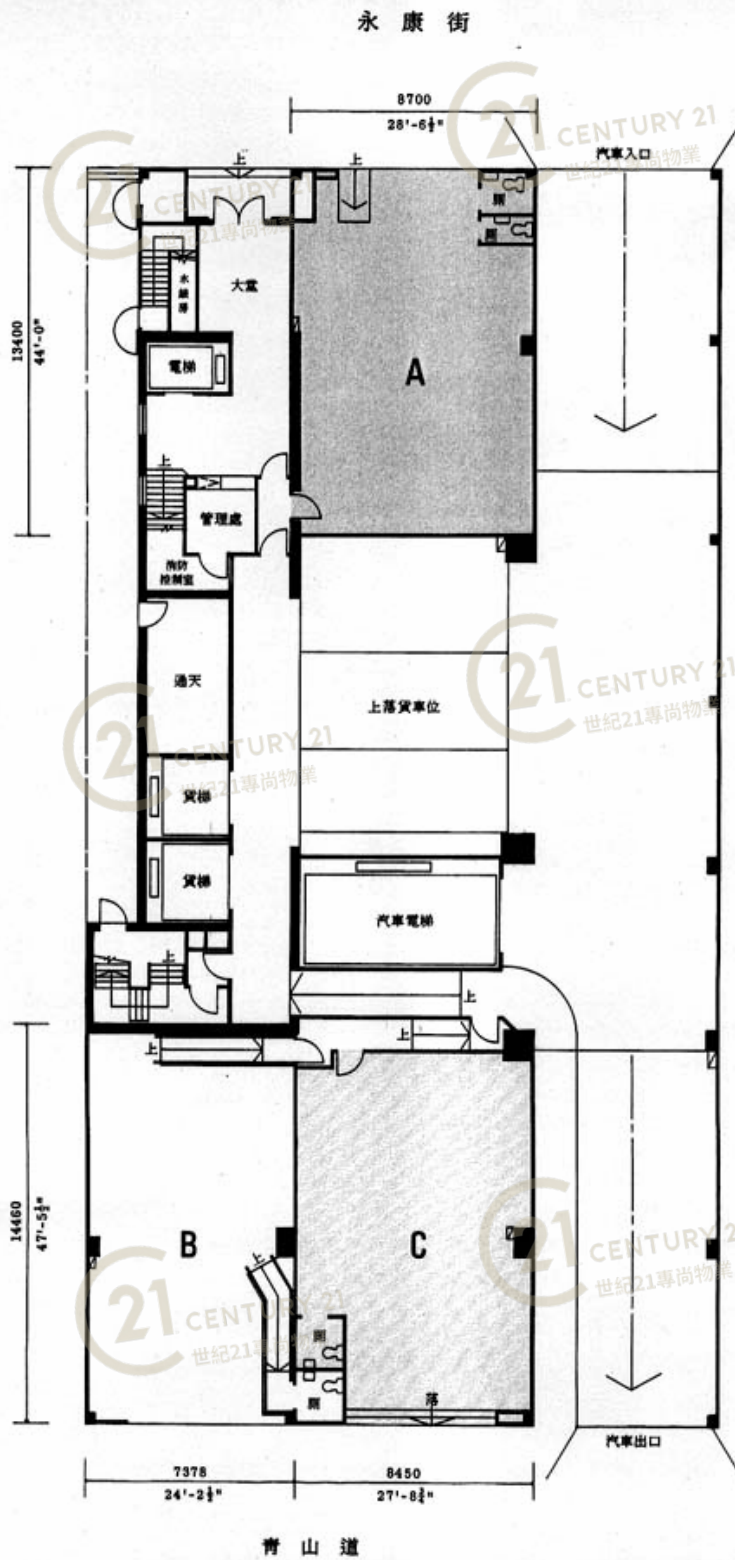


NOT TO SCALE, FOR IDENTIFICATION PURPOSE ONLY

圖中所有數據比例,一概只作參考之用

平面圖

Floor Plan



地下平面圖
GROUND FL. PLAN

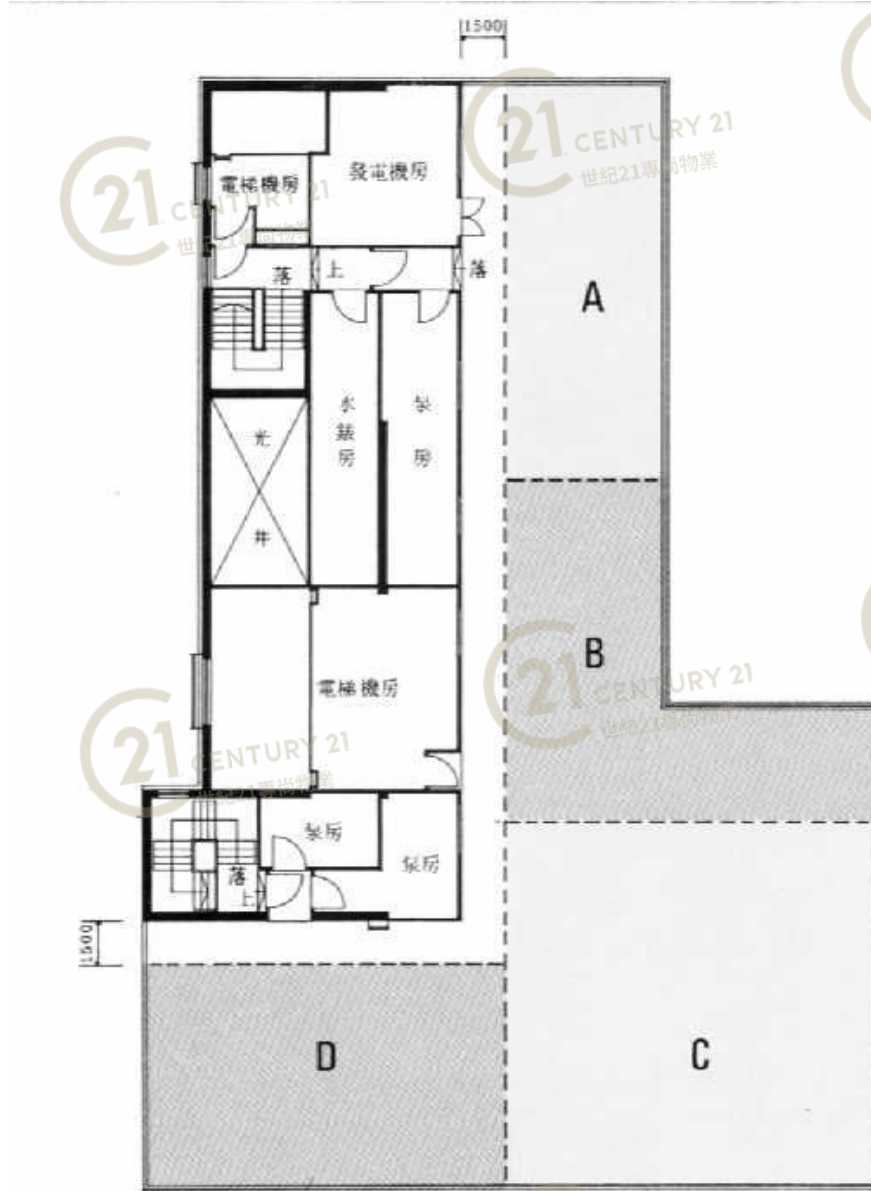
- (A) 樓層高度5.24m.(約17呎2 1/4吋)
- (B) 樓層高度6.04m.(約19呎9 3/4吋)
- (C) 樓層高度5.74m.(約18呎10吋)

偉基大廈 V Ga Building

NOT TO SCALE, FOR IDENTIFICATION PURPOSE ONLY
圖中所有數據比例,一概只作參考之用

平面圖

Floor Plan



天台平面圖

ROOF PLAN

偉基大廈 V Ga Building

NOT TO SCALE, FOR IDENTIFICATION PURPOSE ONLY

圖中所有數據比例，一概只作參考之用