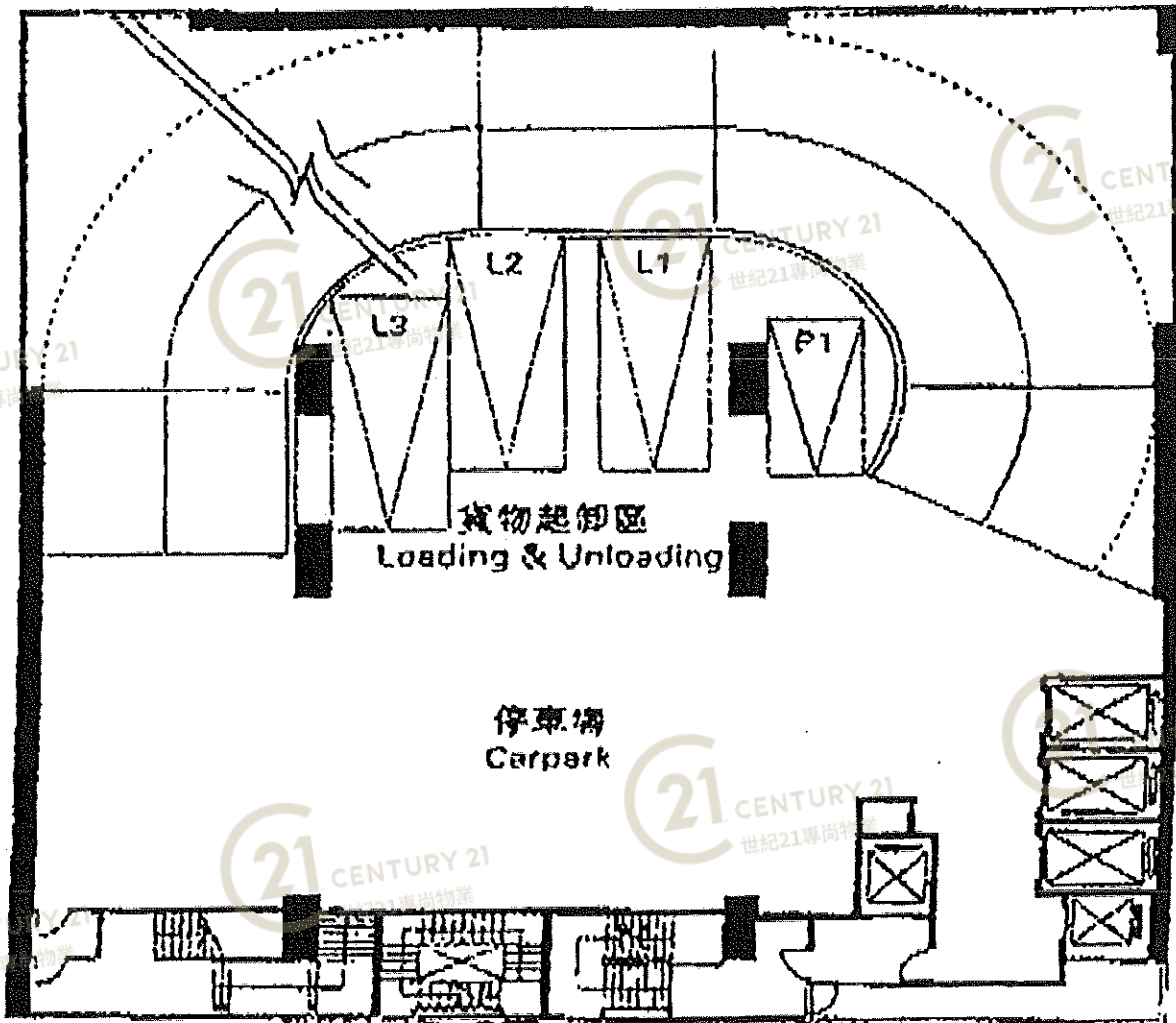


一樓平面圖 1ST FLOOR PLAN

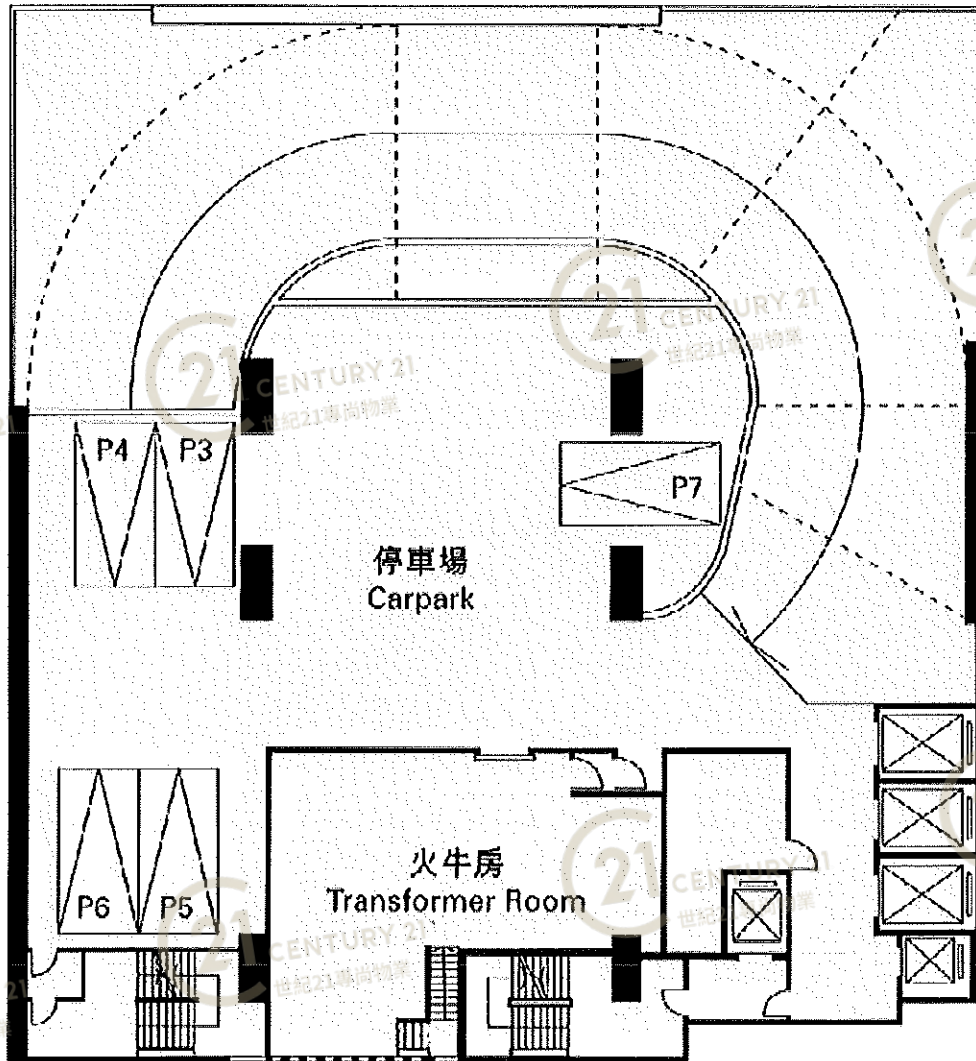


宏昌企業中心 (荃灣) Wang Cheong Enterprises Centre (TW)

NOT TO SCALE, FOR IDENTIFICATION PURPOSE ONLY

圖中所有數據比例，一概只作參考之用

三樓平面圖 3RD FLOOR PLAN



宏昌企業中心 (荃灣) Wang Cheong Enterprises Centre (TW)

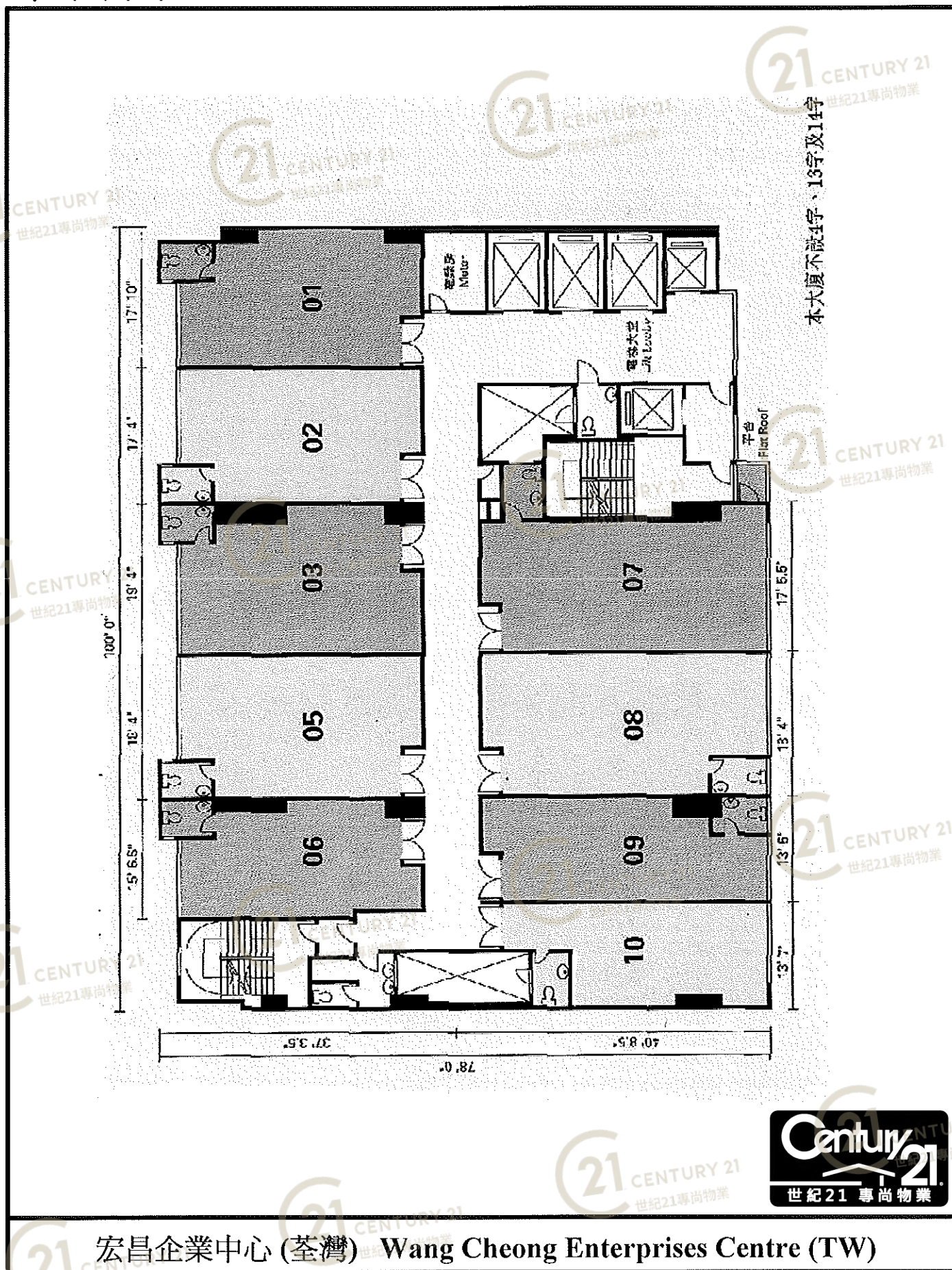
NOT TO SCALE, FOR IDENTIFICATION PURPOSE ONLY

圖中所有數據比例，一概只作參考之用



平面圖

Floor Plan



本大廈不設11字、13字及14字

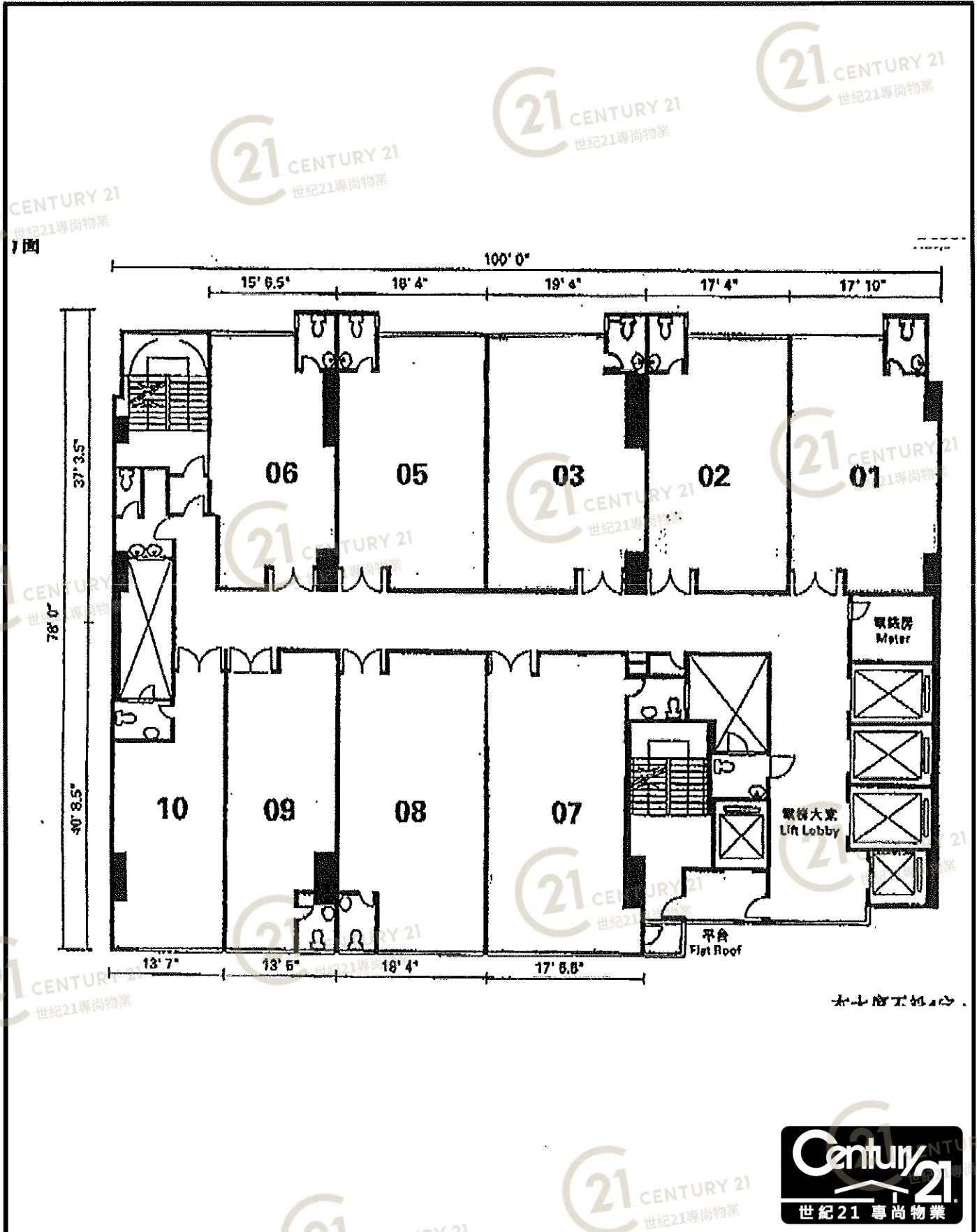


宏昌企業中心 (荃灣) Wang Cheong Enterprises Centre (TW)

NOT TO SCALE, FOR IDENTIFICATION PURPOSE ONLY
圖中所有數據比例，一概只作參考之用

平面圖

Floor Plan



宏昌企業中心 (荃灣) Wang Cheong Enterprises Centre (TW)

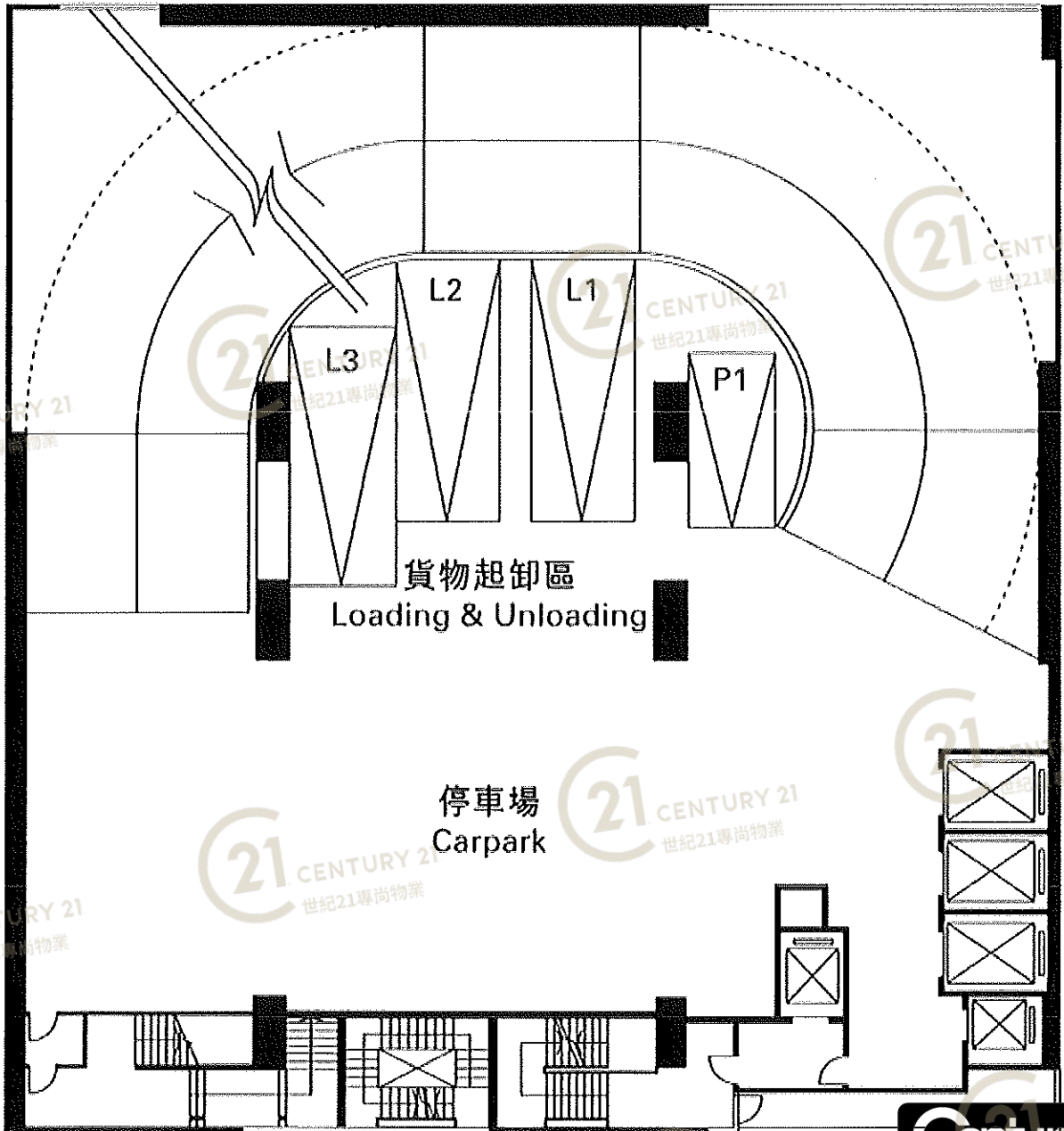
NOT TO SCALE, FOR IDENTIFICATION PURPOSE ONLY

圖中所有數據比例, 一概只作參考之用



一樓平面圖

1ST FLOOR PLAN



宏昌企業中心 (荃灣) Wang Cheong Enterprises Centre (TW)

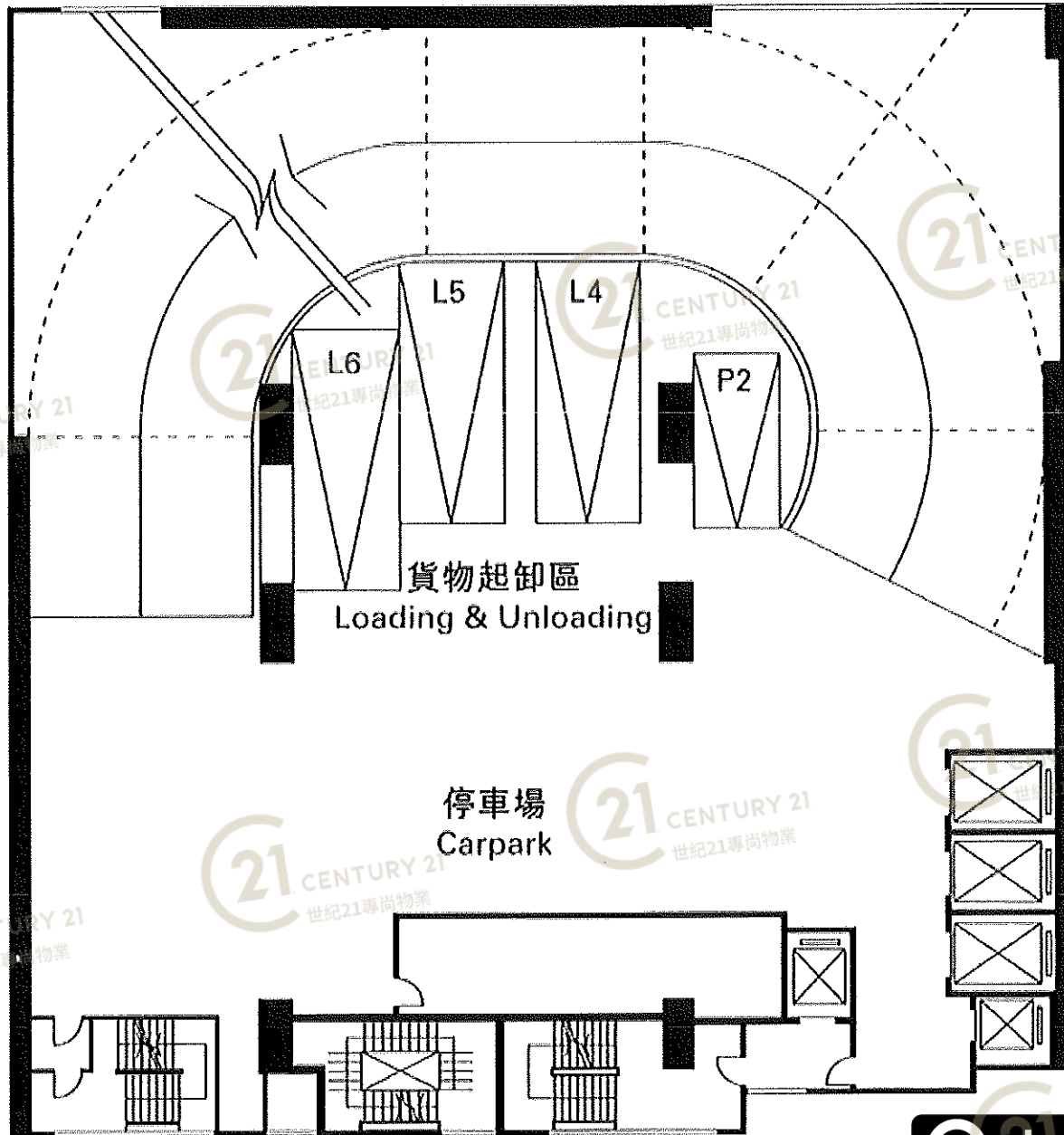
NOT TO SCALE, FOR IDENTIFICATION PURPOSE ONLY

圖中所有數據比例, 一概只作參考之用



二樓平面圖

2ND FLOOR PLAN



宏昌企業中心 (荃灣) Wang Cheong Enterprises Centre (TW)

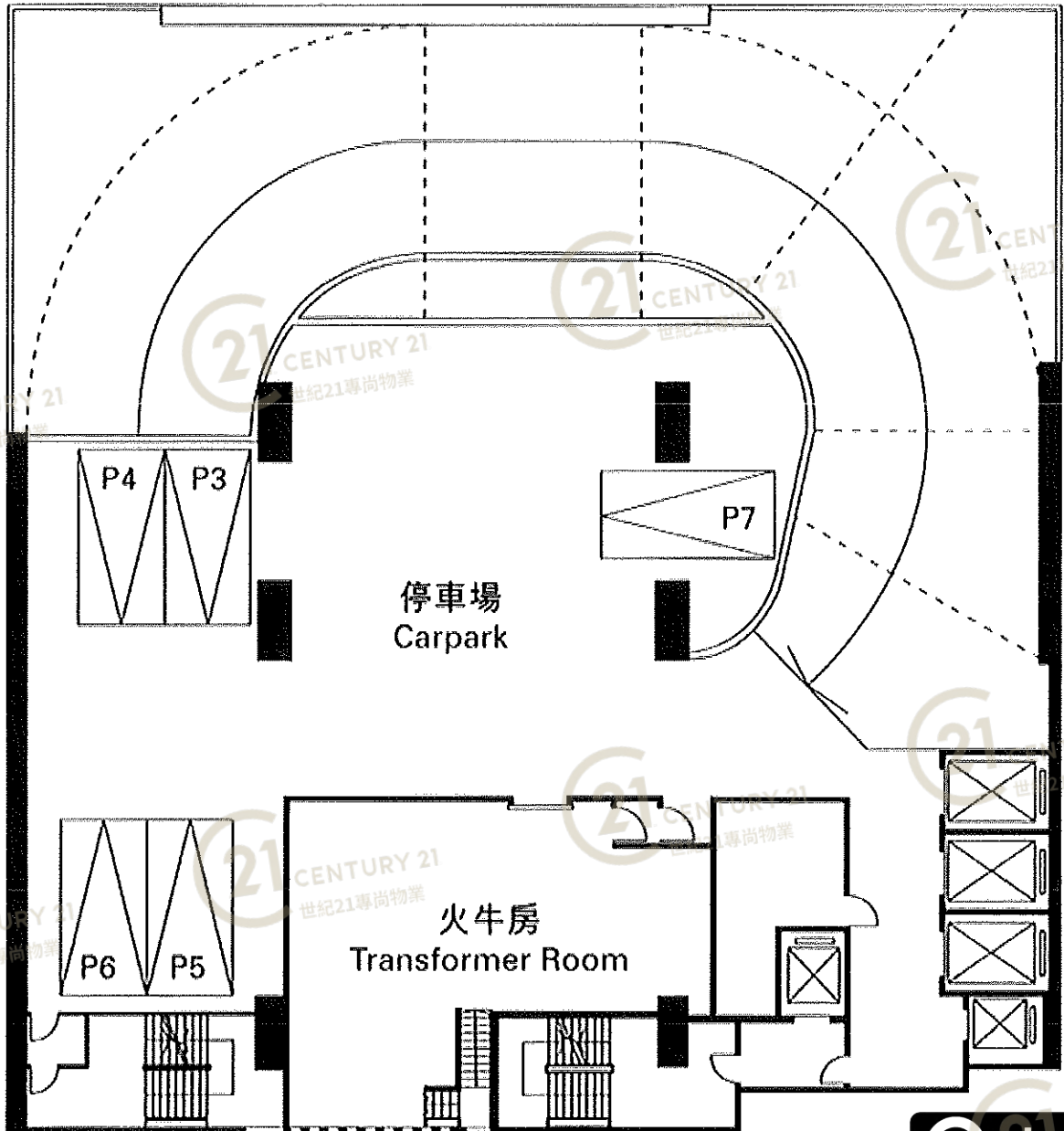
NOT TO SCALE, FOR IDENTIFICATION PURPOSE ONLY

圖中所有數據比例, 一概只作參考之用



三樓平面圖

3RD FLOOR PLAN



宏昌企業中心 (荃灣) Wang Cheong Enterprises Centre (TW)

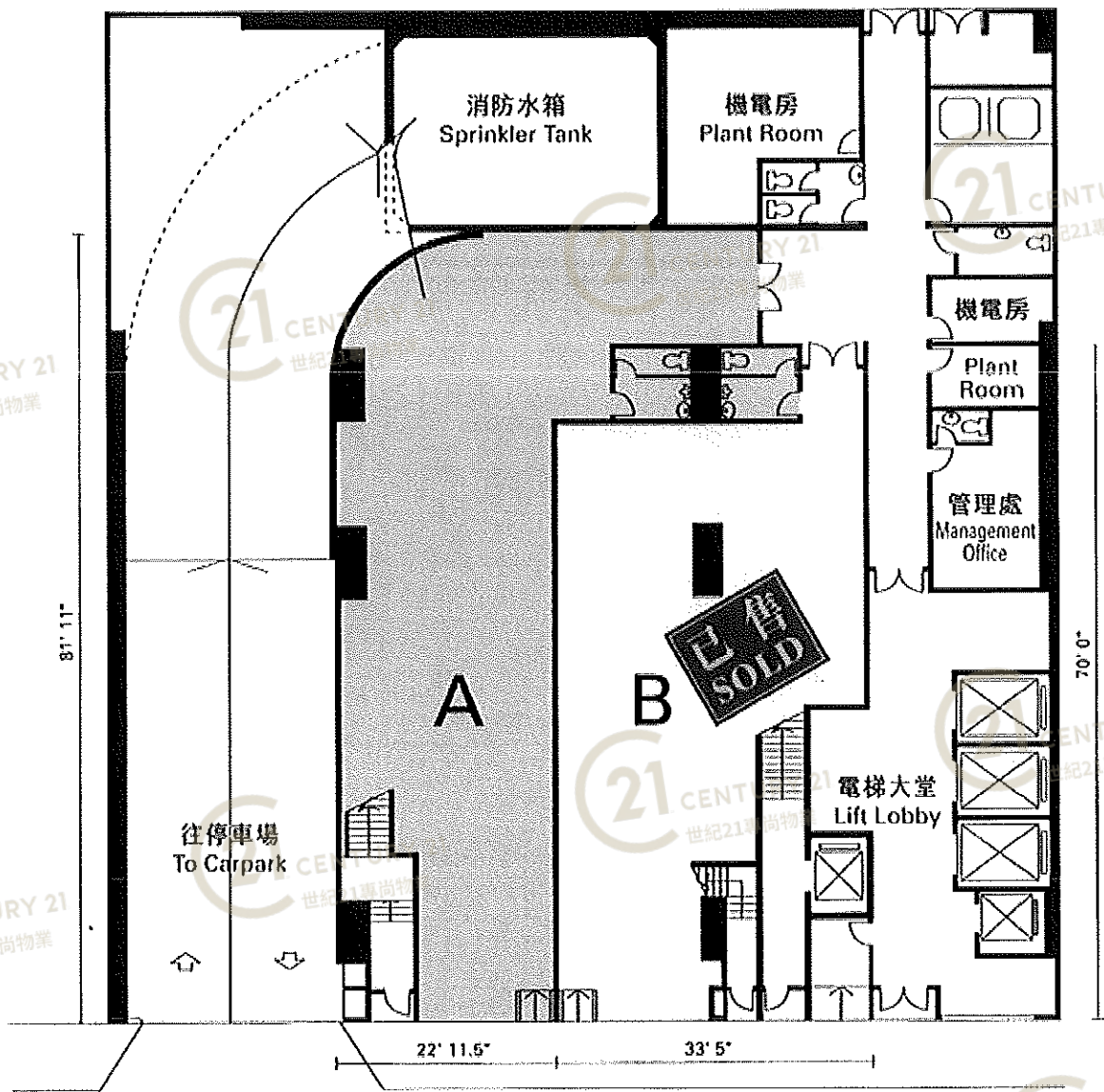
NOT TO SCALE, FOR IDENTIFICATION PURPOSE ONLY

圖中所有數據比例，一概只作參考之用



地下平面圖

GROUND FLOOR PLAN



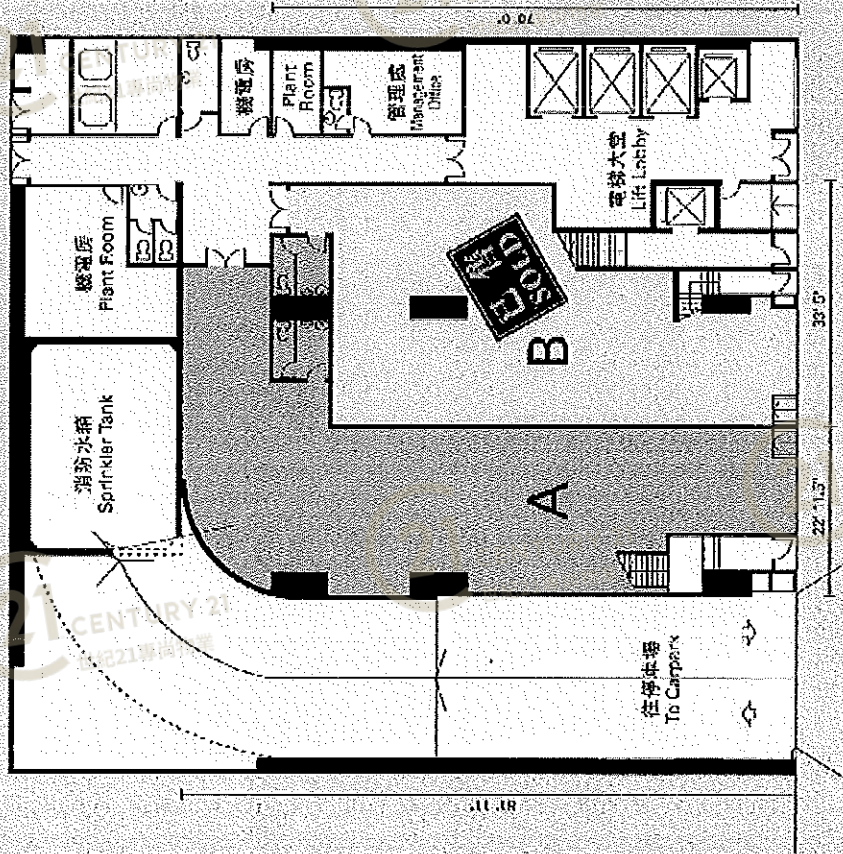
宏昌企業中心 (荃灣) Wang Cheong Enterprises Centre (TW)

NOT TO SCALE, FOR IDENTIFICATION PURPOSE ONLY

圖中所有數據比例，一概只作參考之用



地下平面圖
GROUND FLOOR PLAN



FLOORLOADING 樓層負荷	
地下	500磅
Ground Floor	25Kpa
五至廿二樓	150磅
Sub-22nd Floor	7.5Kpa
樓層高度 FLOOR HEIGHT	
地下	5.4M
Ground Floor	17'-8.5"
一樓	5.4M
First Floor	17'-8.5"
二樓	6.0M
Second Floor	19'-8"
三樓	6.0M
Third Floor	19'-8"
五至廿二樓	3.5M
Sub-22nd Floor	11'-5.5"

WANG
CHEONG
Enterprises Centre



宏昌企業中心 (荃灣) Wang Cheong Enterprises Centre (TW)

NOT TO SCALE, FOR IDENTIFICATION PURPOSE ONLY

圖中所有數據比例，一概只作參考之用

外觀圖

Building Outlook

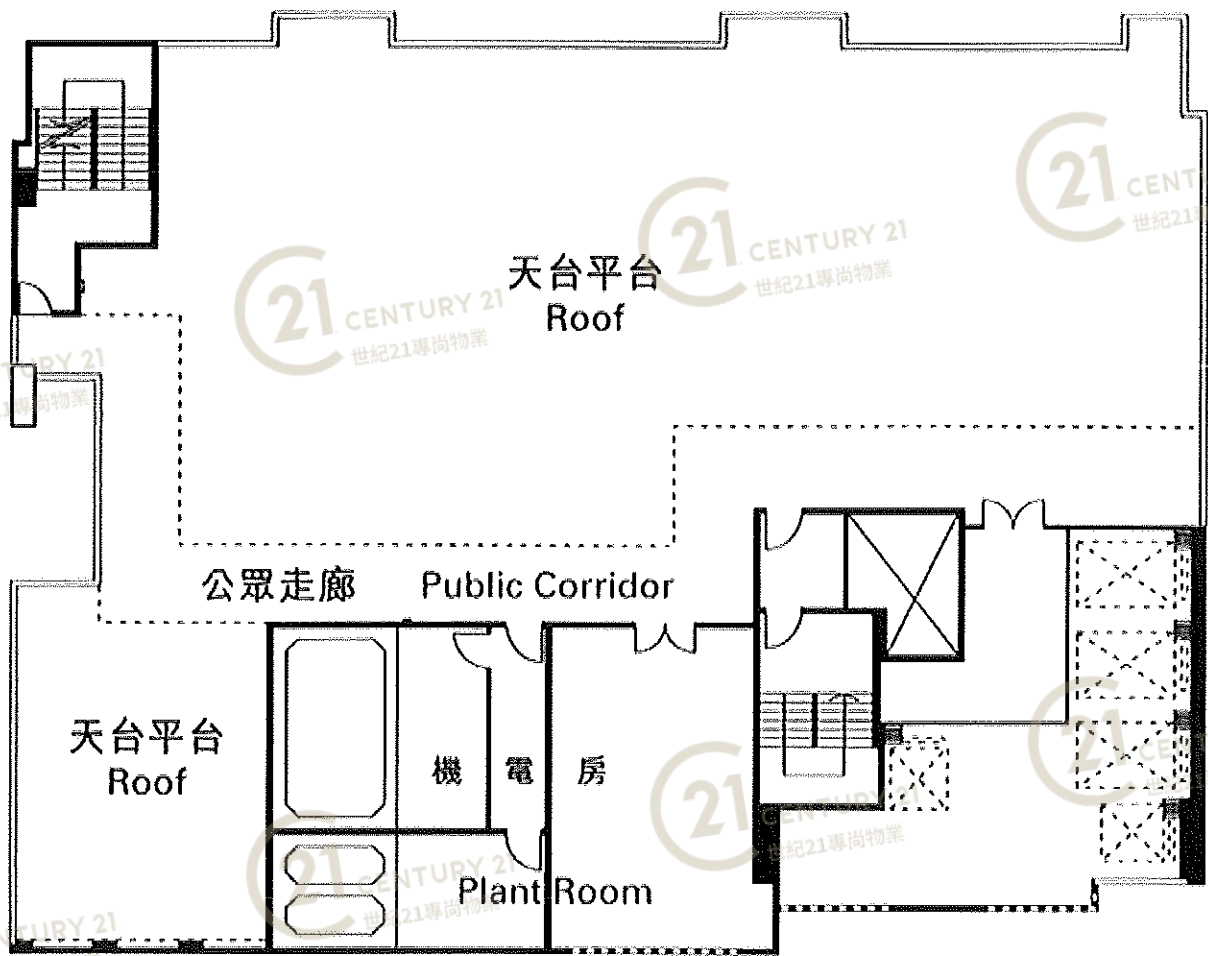


宏昌企業中心 (荃灣) Wang Cheong Enterprises Centre (TW)

NOT TO SCALE, FOR IDENTIFICATION PURPOSE ONLY

圖中所有數據比例，一概只作參考之用

天台平面圖 ROOF PLAN



宏昌企業中心 (荃灣) Wang Cheong Enterprises Centre (TW)

NOT TO SCALE, FOR IDENTIFICATION PURPOSE ONLY

圖中所有數據比例，一概只作參考之用