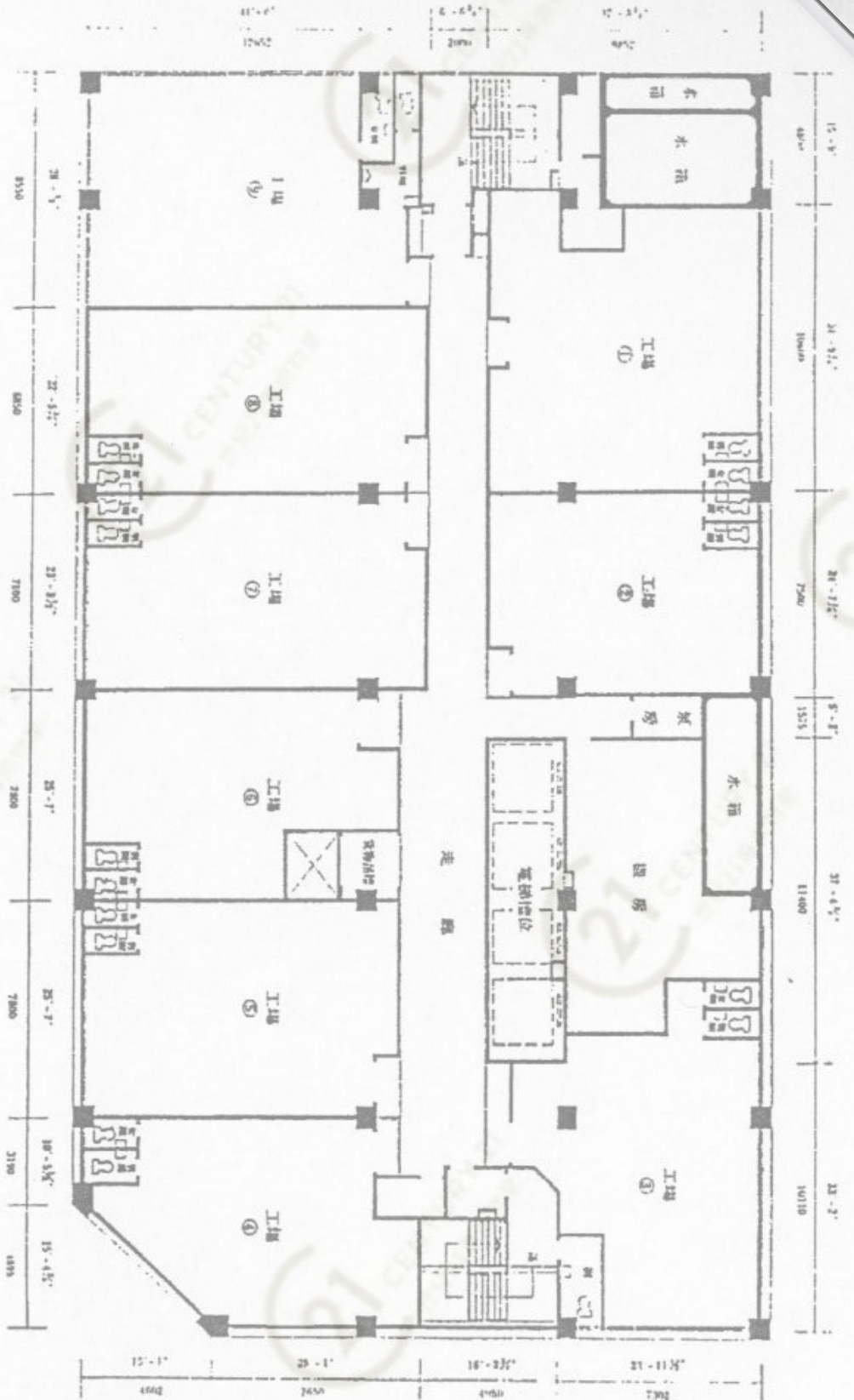


13

十三樓平面圖 13th FLOOR PLAN

向宏發道

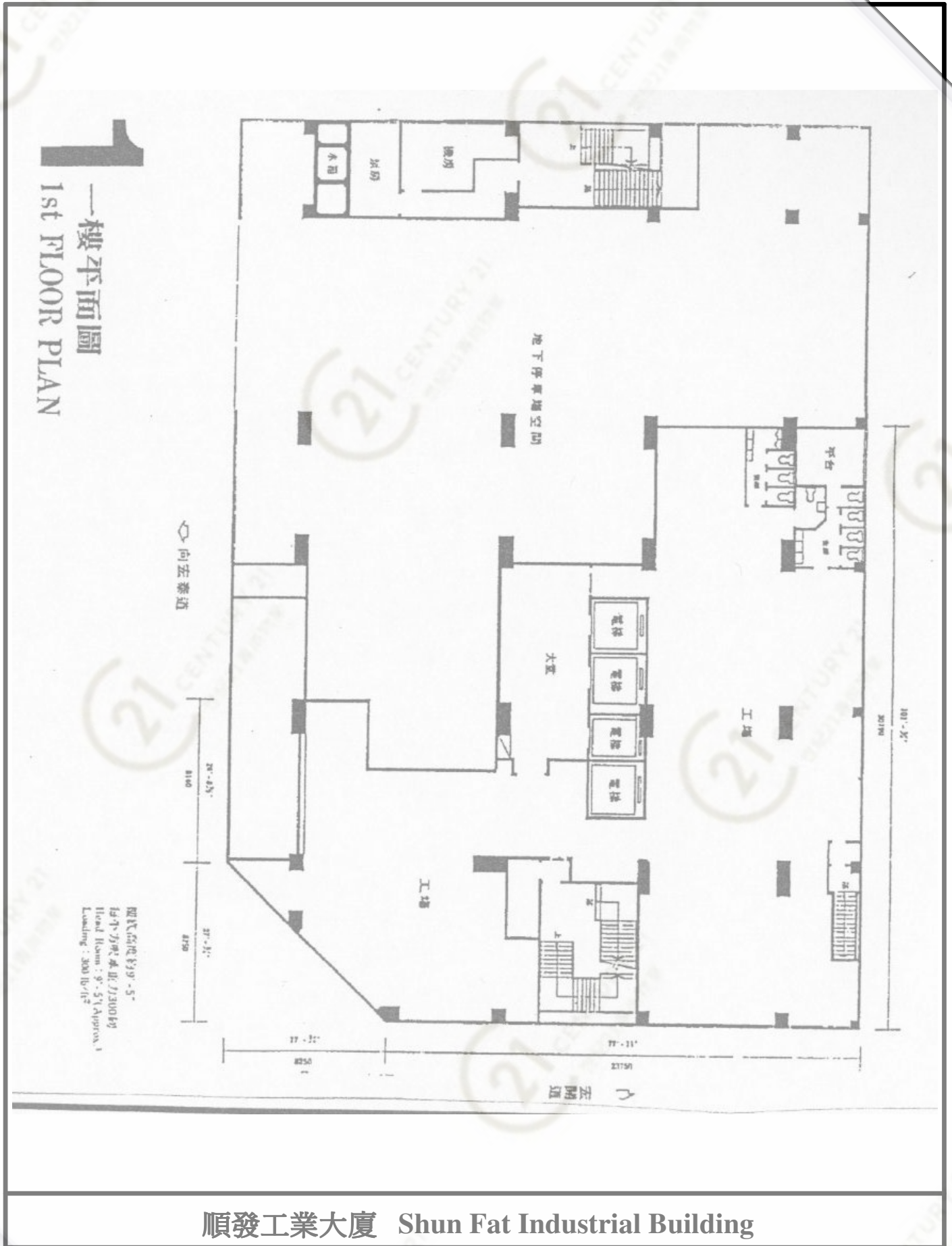
樓底高度約9'-5"
14'7" 方呎 承中 (1150 kg)
Heard Room : 9'-5" (Approx.)
Loading : 150 lb/ft²



順發工業大廈 Shun Fat Industrial Building

NOT TO SCALE, FOR IDENTIFICATION PURPOSE ONLY

圖中所有數據比例，一概只作參考之用



順發工業大廈 Shun Fat Industrial Building

NOT TO SCALE, FOR IDENTIFICATION PURPOSE ONLY

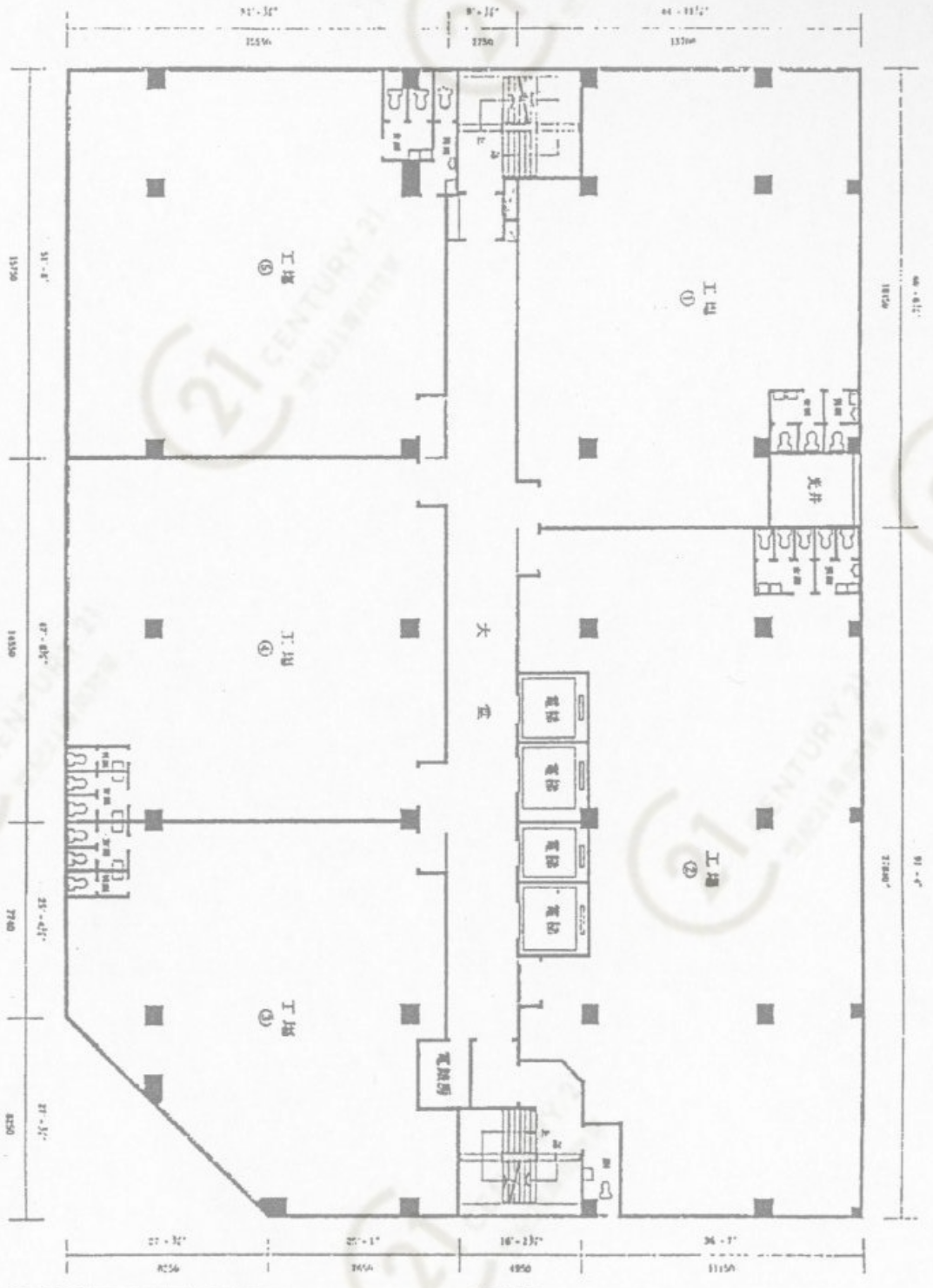
圖中所有數據比例，一概只作參考之用

2-4

二樓至四樓平面圖
2nd-4th FLOOR PLAN

向宏泰道

樓底高度約9'-5"
19 平方呎 承重力2000磅
Rear Room: 9'-5" Approx.)
Loading: 200 lbs/ft²



順發工業大廈 Shun Fat Industrial Building

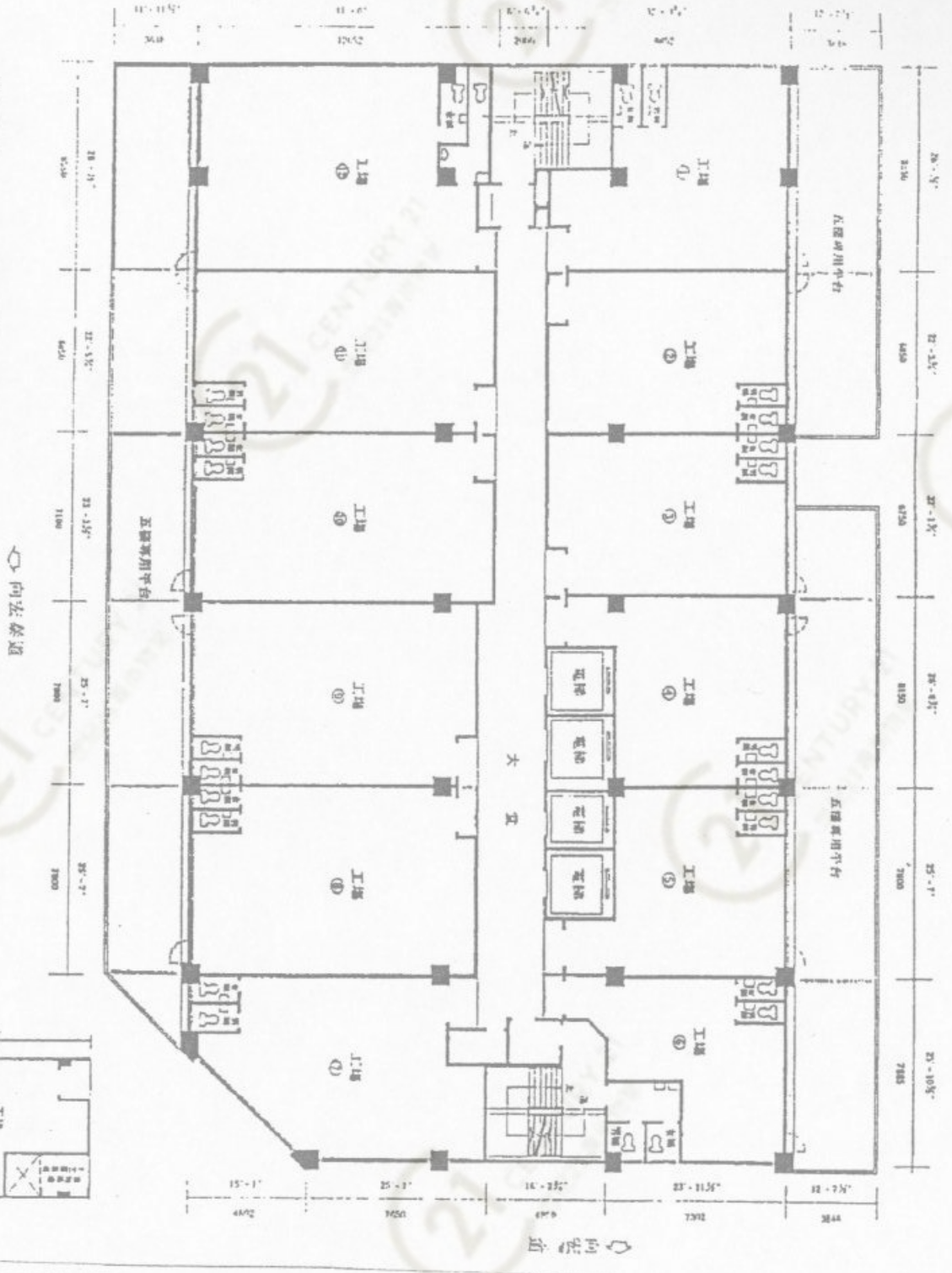
NOT TO SCALE, FOR IDENTIFICATION PURPOSE ONLY

圖中所有數據比例，一概只作參考之用

5-12

五樓至十二樓平面圖
5th-12th FLOOR PLAN

假設高度約9'-5"
每平方呎承重力150磅
Head Room: 9'-5" (Approx.)
Loading: 150 lb/ft²



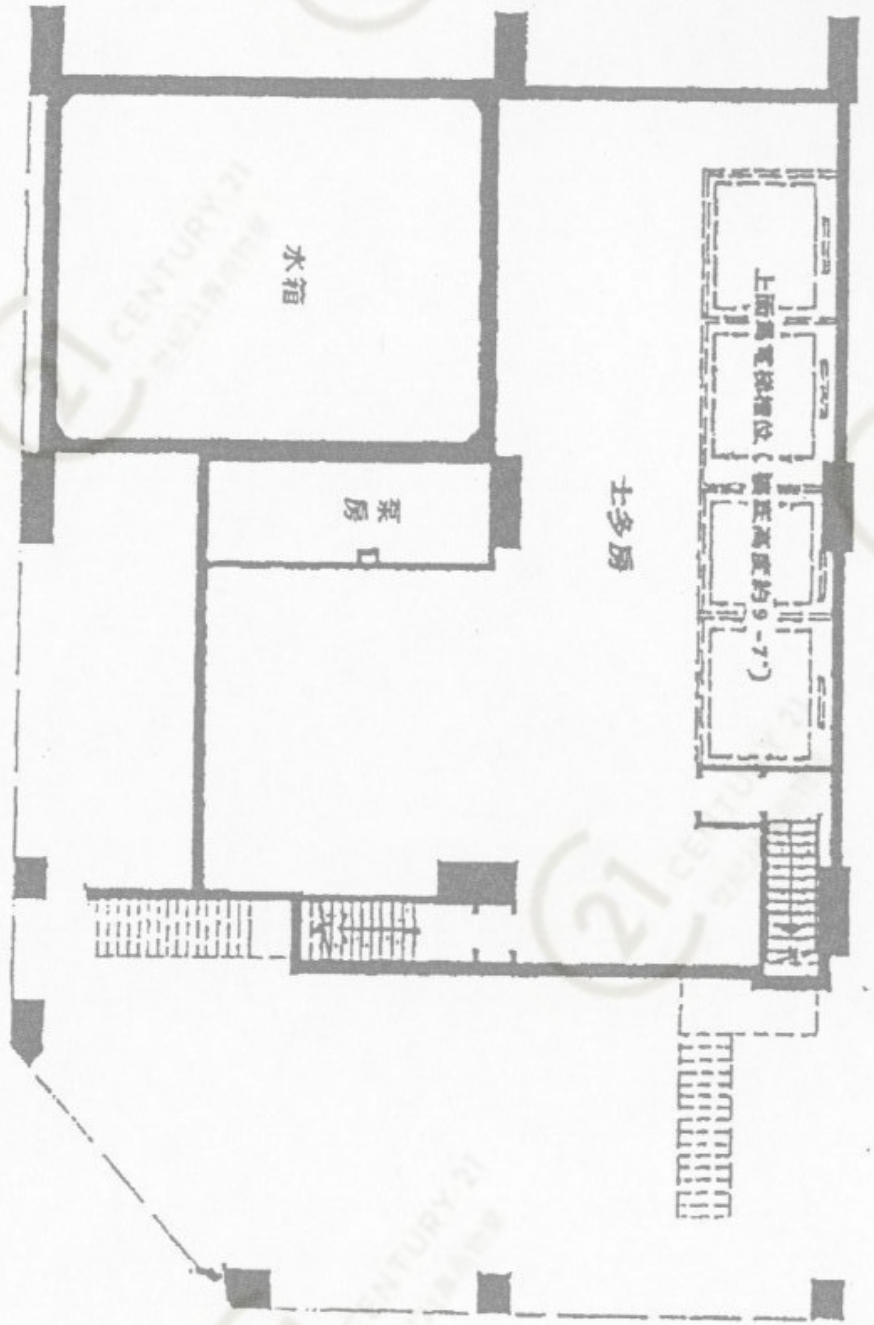
順發工業大廈 Shun Fat Industrial Building

NOT TO SCALE, FOR IDENTIFICATION PURPOSE ONLY

圖中所有數據比例，一概只作參考之用

B 地庫平面圖 BASEMENT PLAN

機房高度約16'-2" (電梯機房除外)
Head Room : 16'-2" (Approx)
(Lift pit excluded)



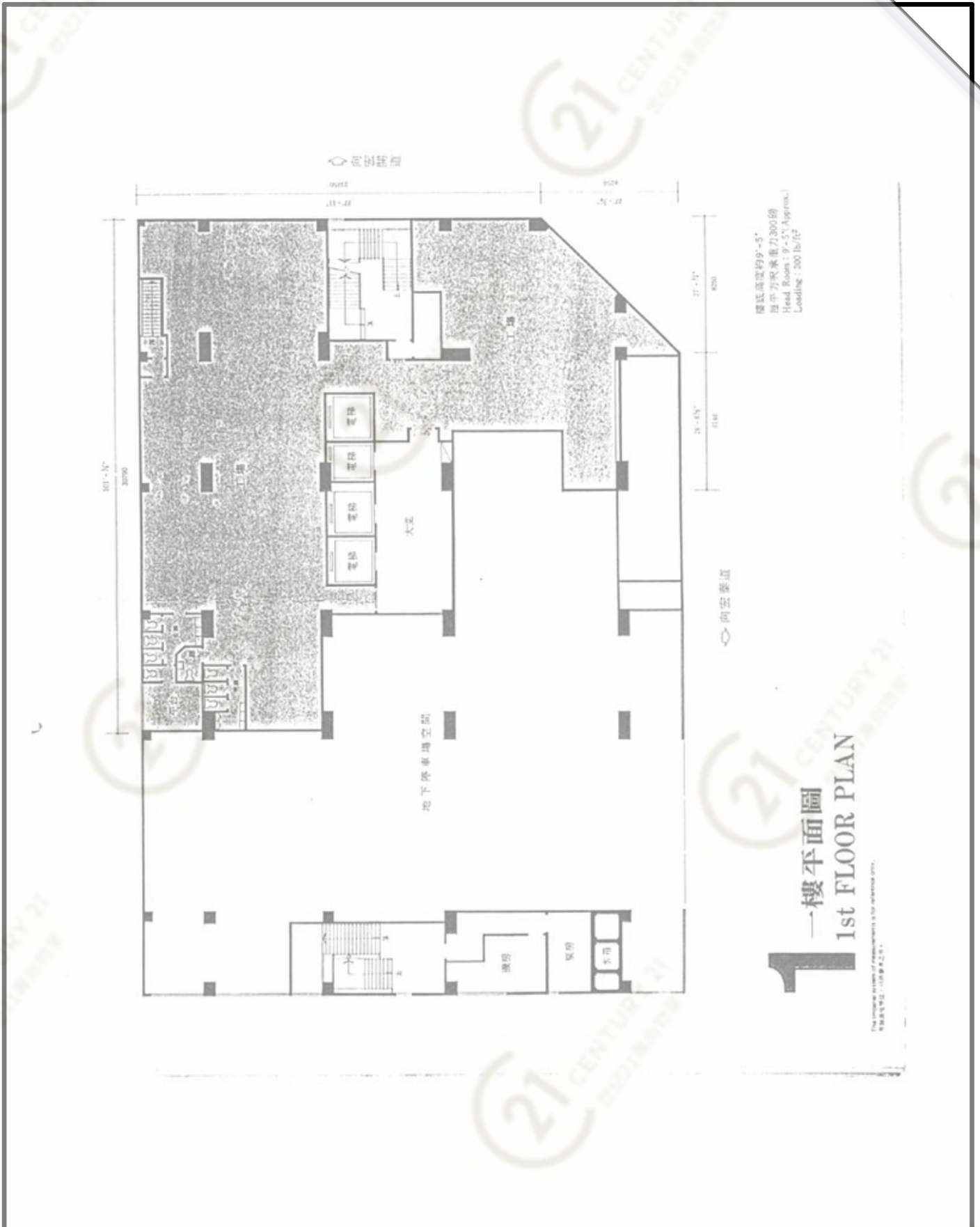
順發工業大廈 Shun Fat Industrial Building

NOT TO SCALE, FOR IDENTIFICATION PURPOSE ONLY

圖中所有數據比例，一概只作參考之用

平面圖

Floor Plan



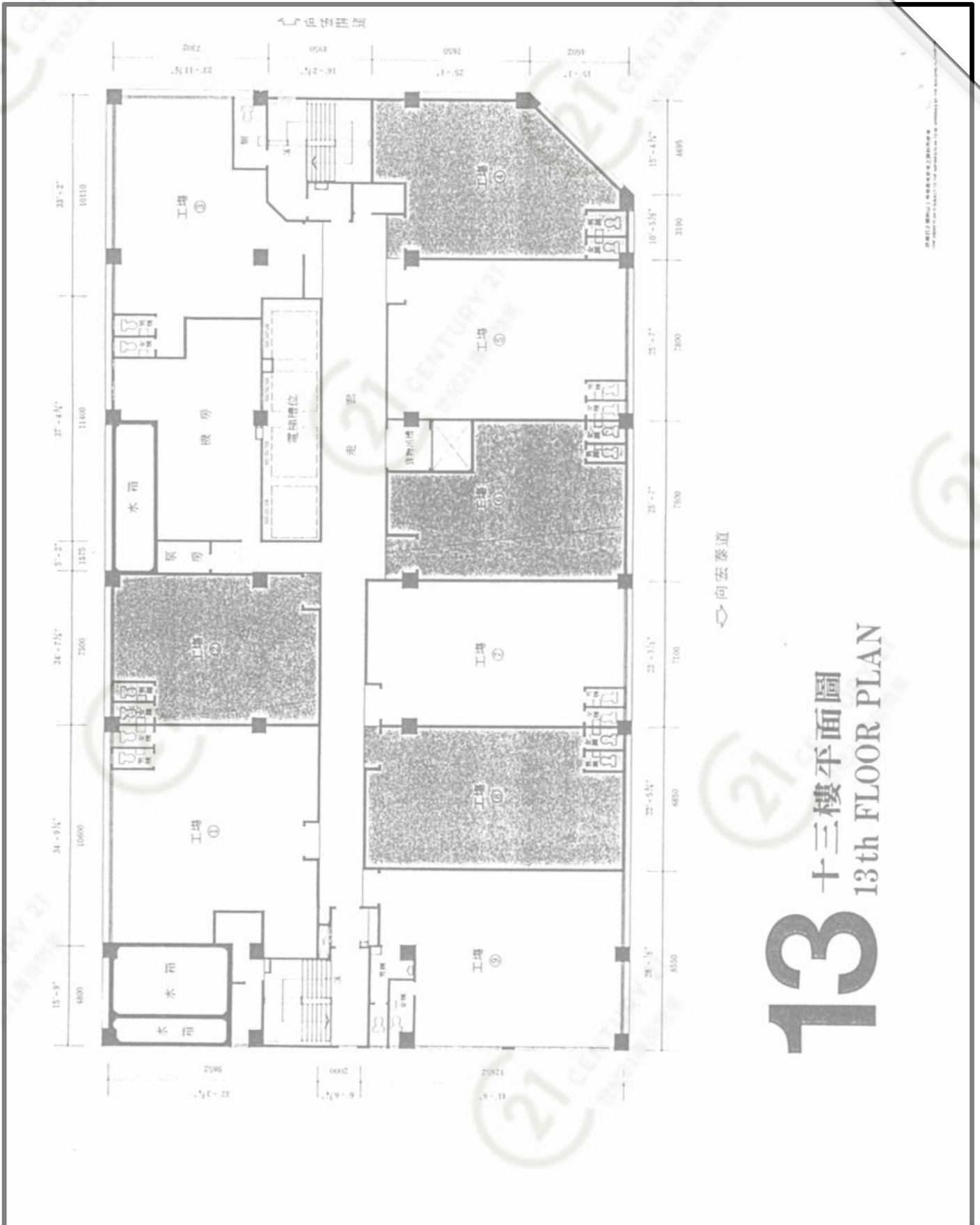
順發工業大廈 Shun Fat Industrial Building

NOT TO SCALE, FOR IDENTIFICATION PURPOSE ONLY

圖中所有數據比例，一概只作參考之用

平面圖

Floor Plan



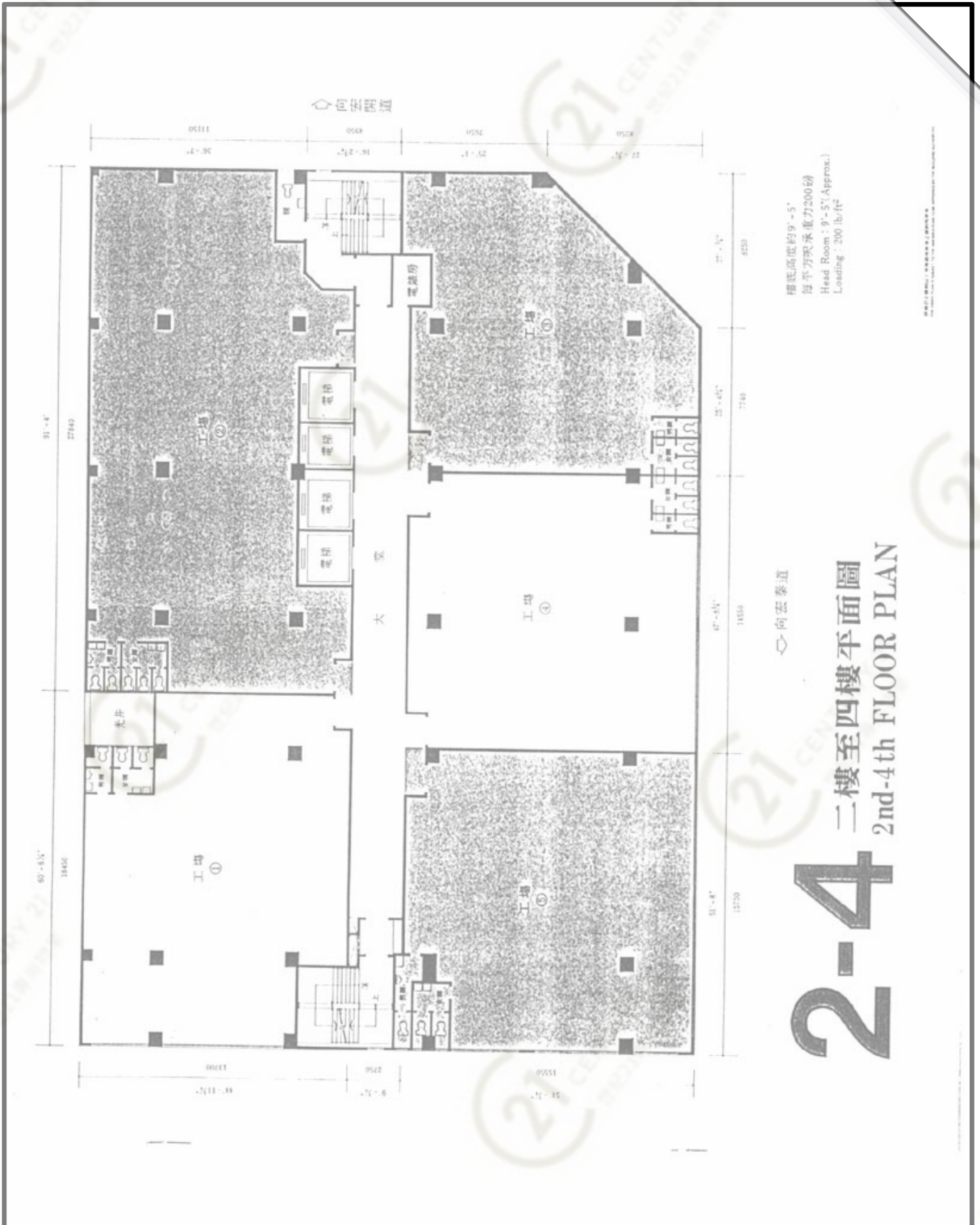
順發工業大廈 Shun Fat Industrial Building

NOT TO SCALE, FOR IDENTIFICATION PURPOSE ONLY

圖中所有數據比例，一概只作參考之用

平面圖

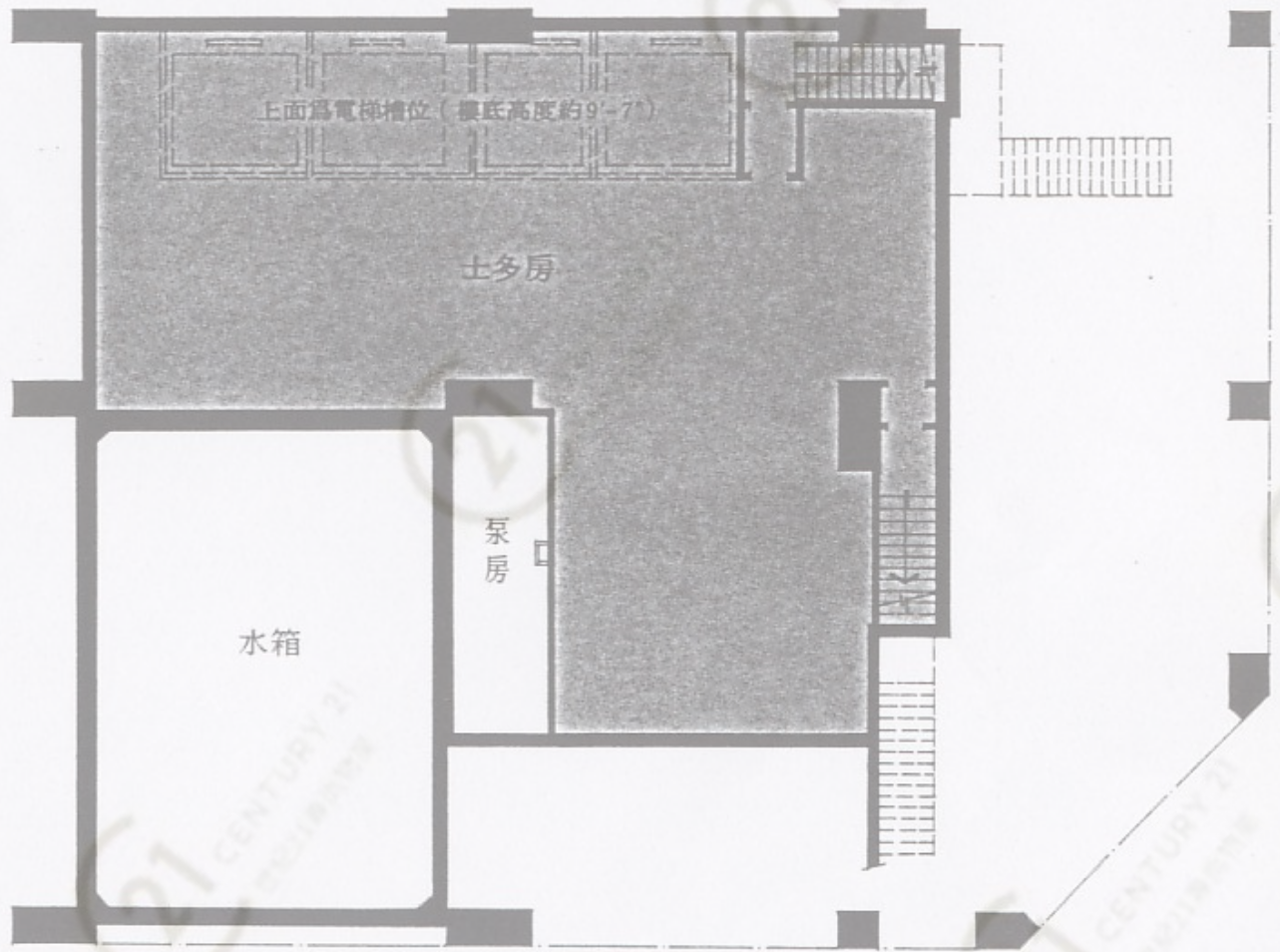
Floor Plan



順發工業大廈 Shun Fat Industrial Building

NOT TO SCALE, FOR IDENTIFICATION PURPOSE ONLY

圖中所有數據比例，一概只作參考之用



樓底高度約16'-2" (電梯槽底除外)
Head Room : 16'-2" (Approx)
(Lift pit excluded)

B

地庫平面圖
BASEMENT PLAN

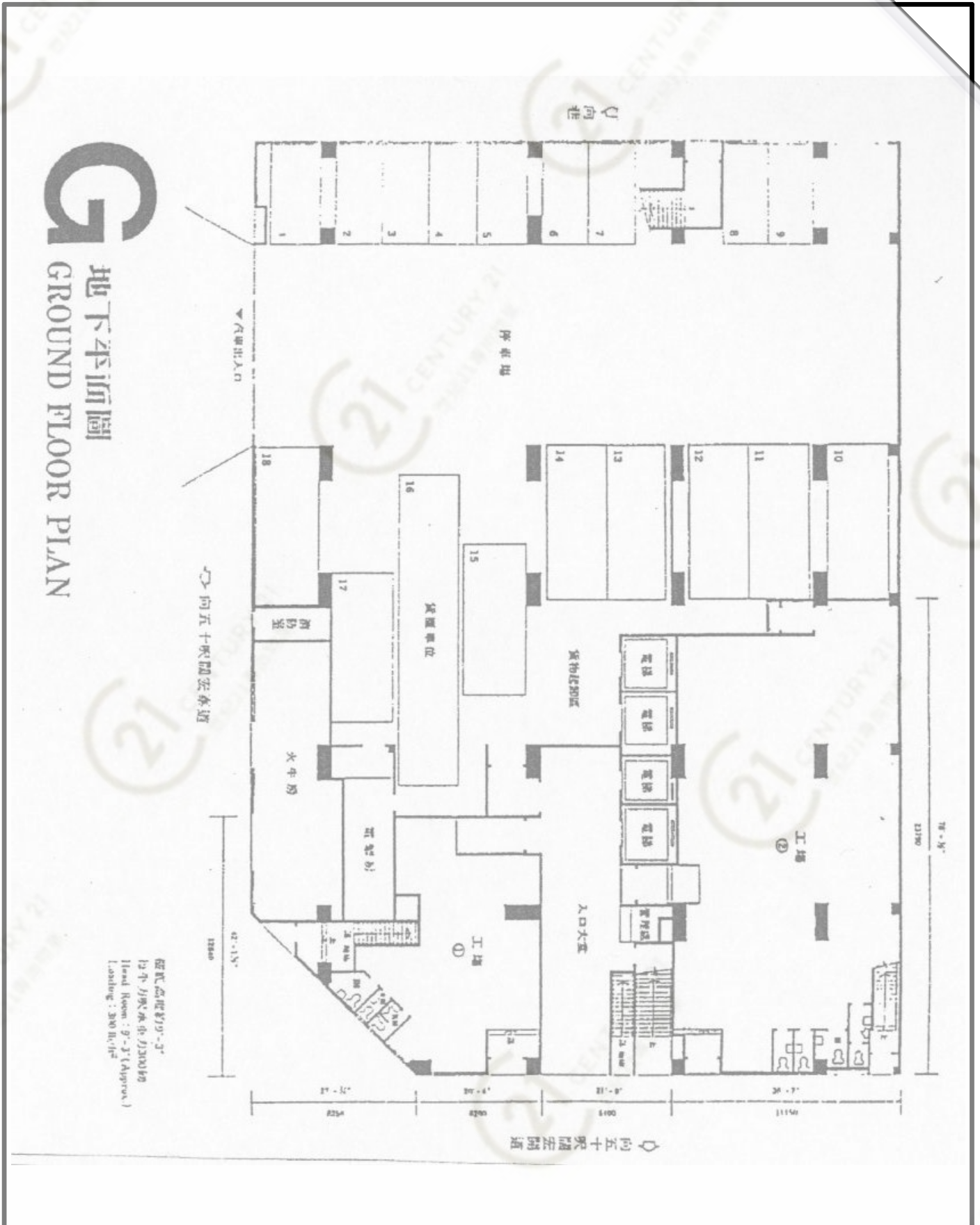
順發工業大廈 Shun Fat Industrial Building

NOT TO SCALE, FOR IDENTIFICATION PURPOSE ONLY

圖中所有數據比例, 一概只作參考之用

平面圖

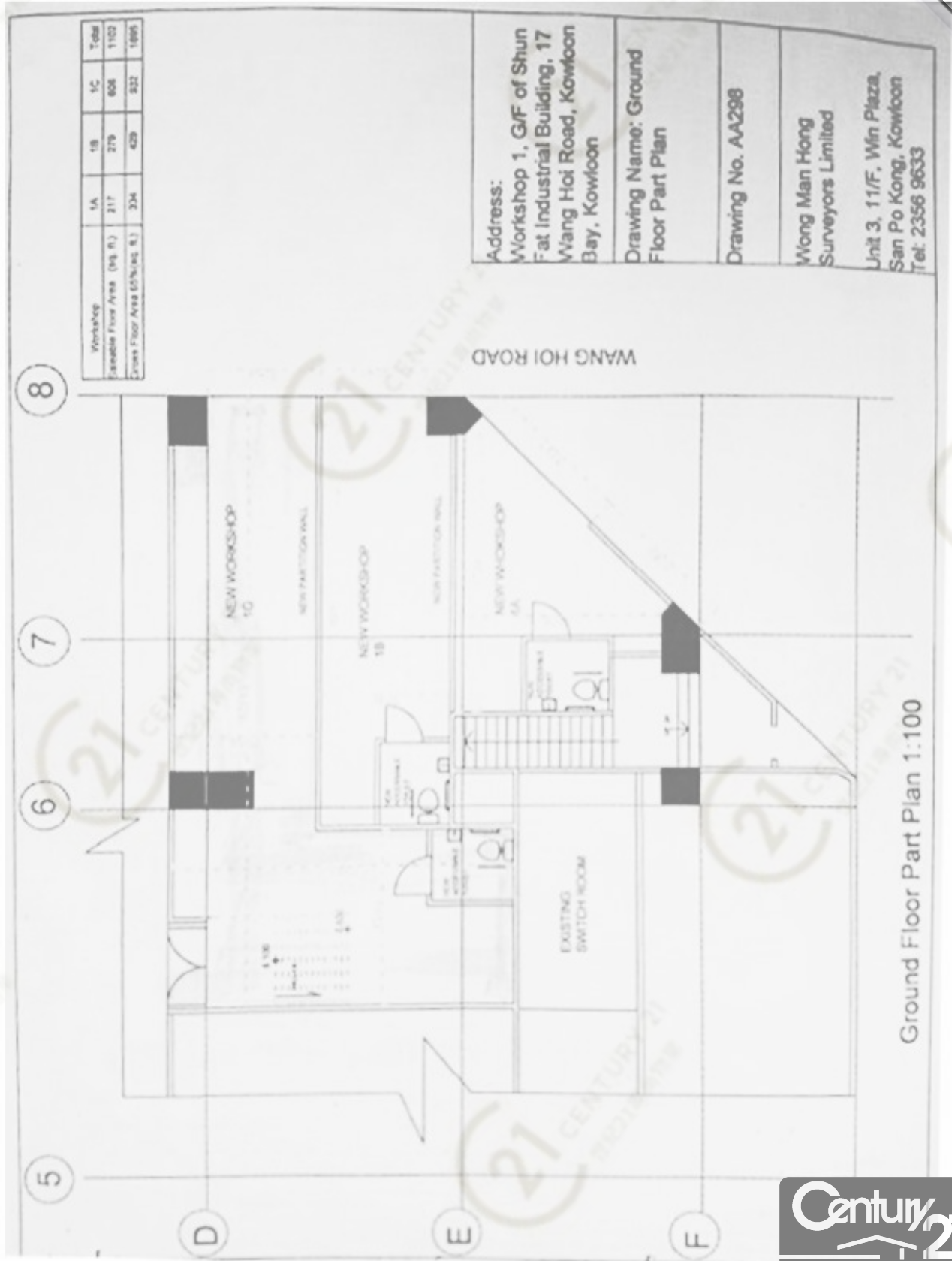
Floor Plan



NOT TO SCALE, FOR IDENTIFICATION PURPOSE ONLY
圖中所有數據比例，一概只作參考之用

平面圖

Floor Plan



順發工業大廈 Shun Fat Industrial Building

NOT TO SCALE, FOR IDENTIFICATION PURPOSE ONLY

圖中所有數據比例，一概只作參考之用