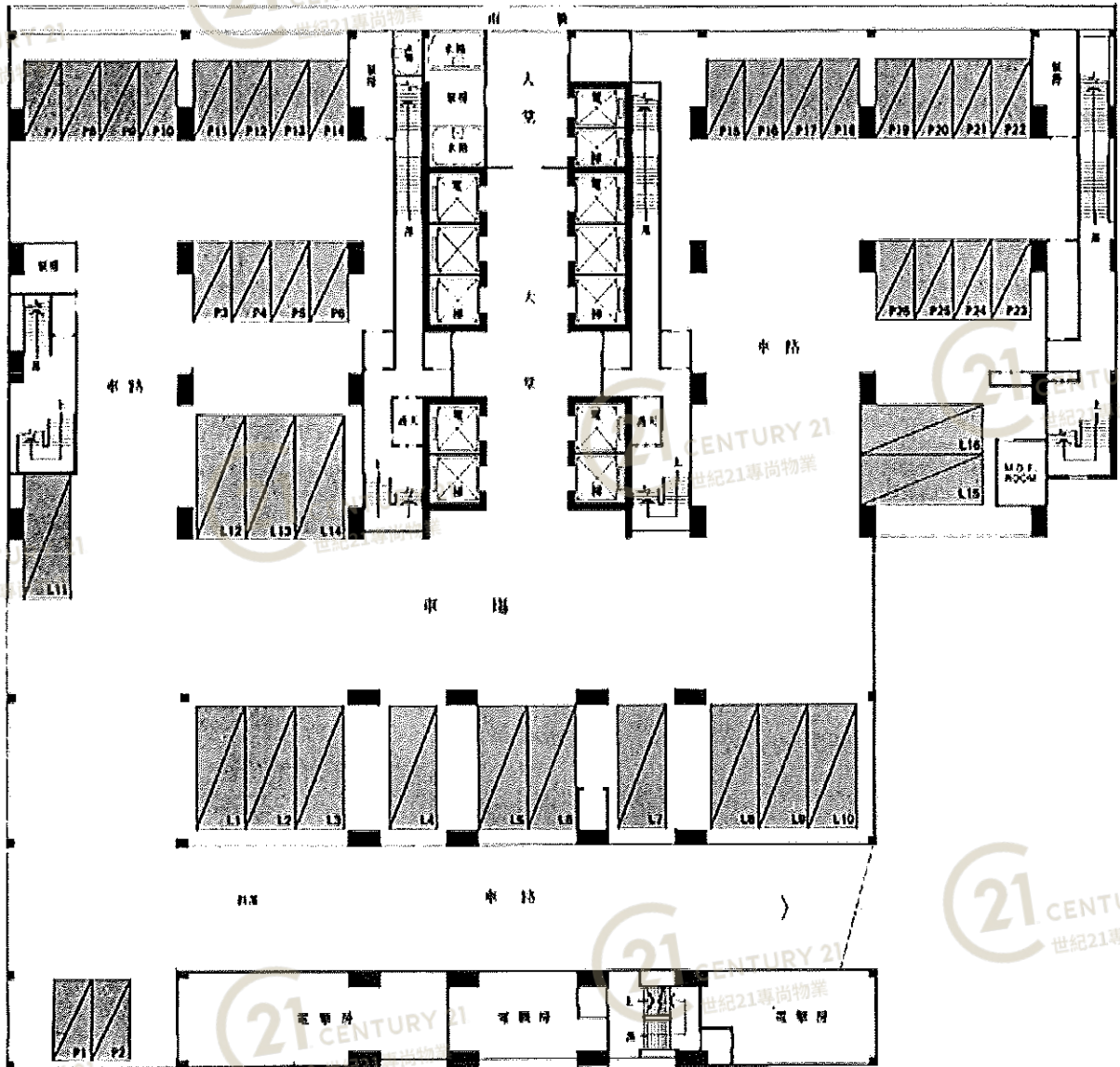


平面圖

Floor Plan



1st Floor Plan

匯力工業中心 Thriving Industrial Centre

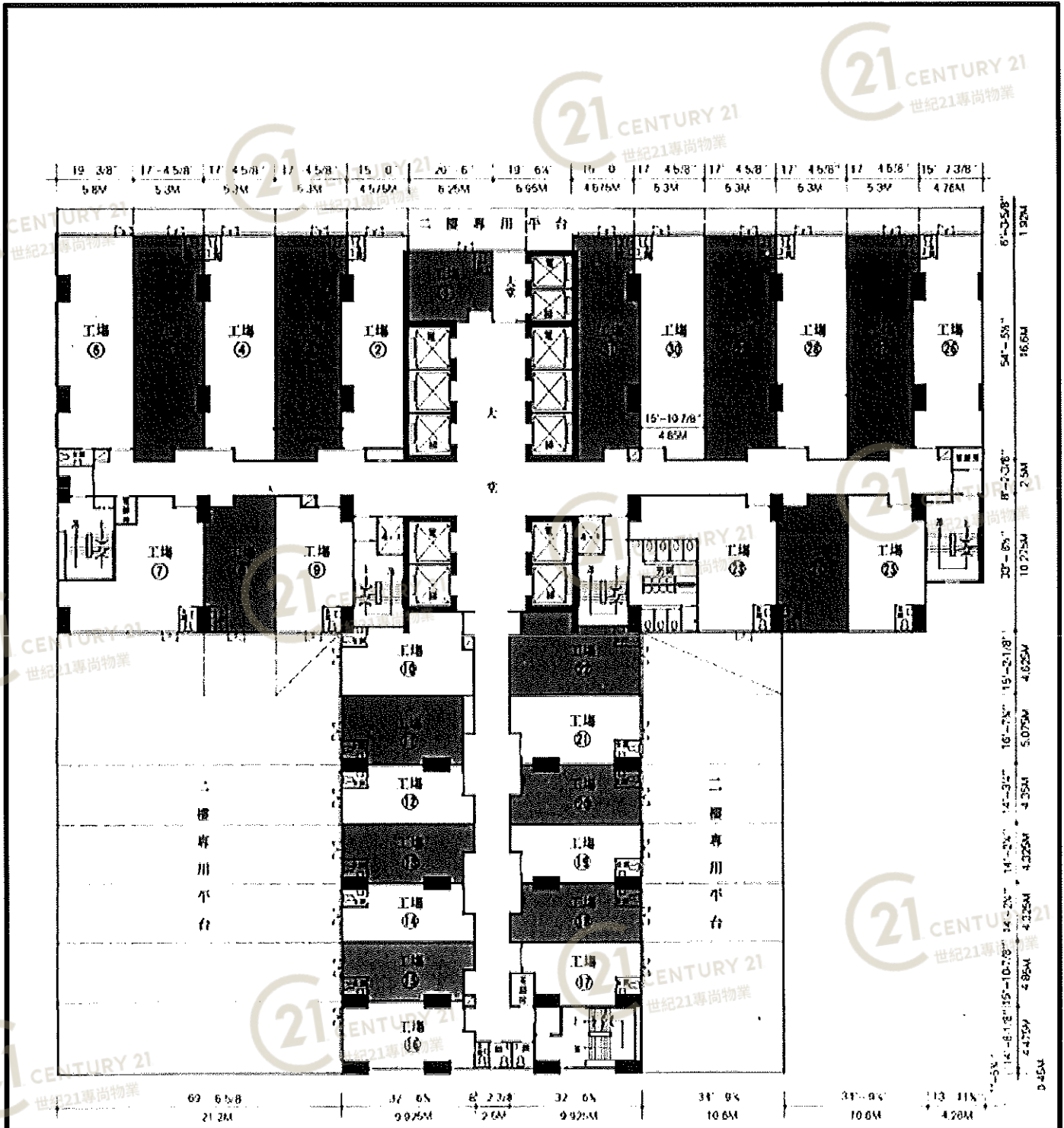
NOT TO SCALE, FOR IDENTIFICATION PURPOSE ONLY

圖中所有數據比例，一概只作參考之用



平面圖

Floor Plan



2nd ~ 4th Floor Plan



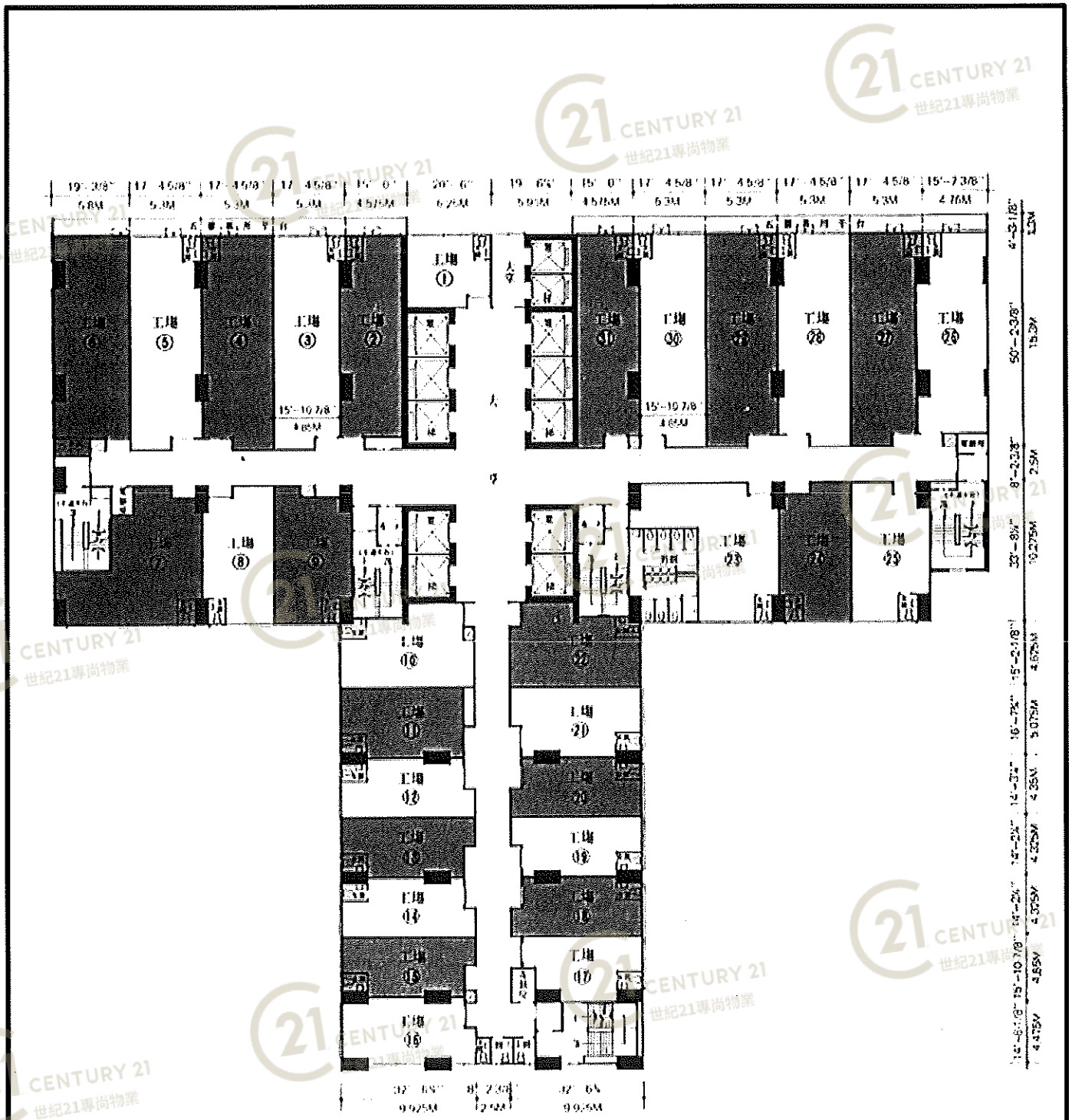
匯力工業中心 Thriving Industrial Centre

NOT TO SCALE, FOR IDENTIFICATION PURPOSE ONLY

圖中所有數據比例，一概只作參考之用

平面圖

Floor Plan



5th ~ 18th Floor Plan

匯力工業中心 Thriving Industrial Centre

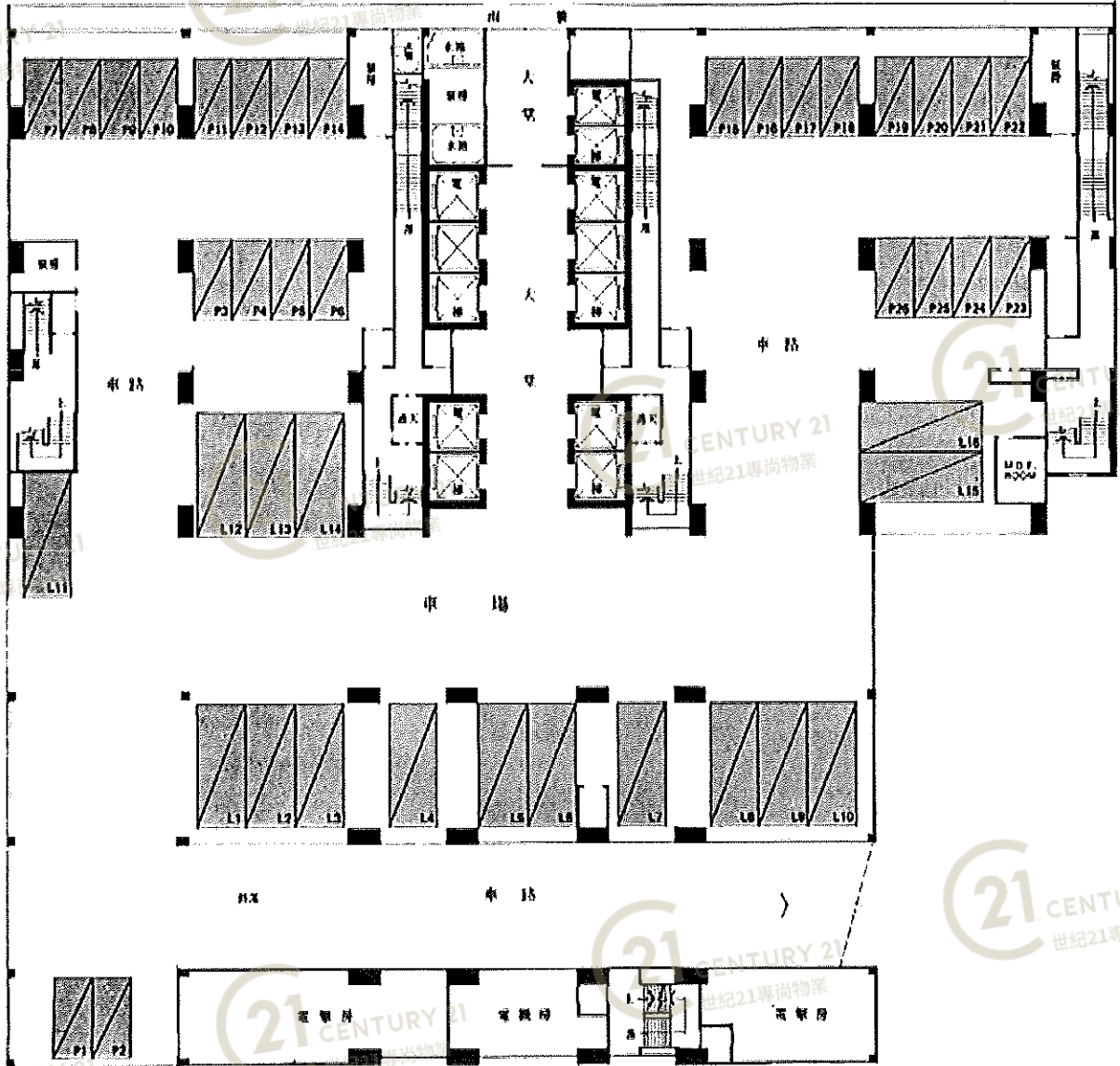
NOT TO SCALE, FOR IDENTIFICATION PURPOSE ONLY

圖中所有數據比例，一概只作參考之用



平面圖

Floor Plan



1st Floor Plan

匯力工業中心 Thriving Industrial Centre

NOT TO SCALE, FOR IDENTIFICATION PURPOSE ONLY

圖中所有數據比例，一概只作參考之用



平面圖

Floor Plan

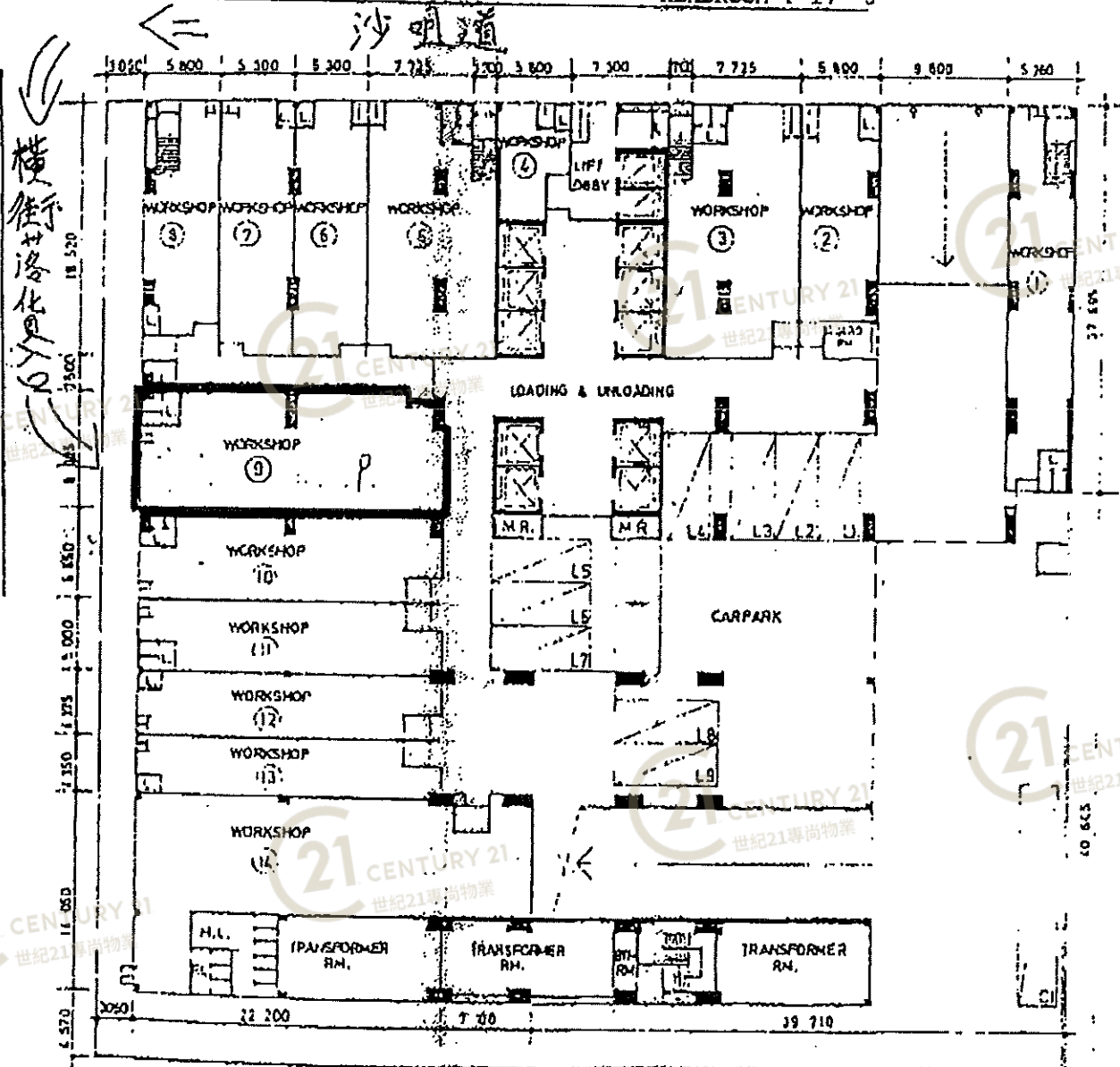
RE: WORKSHOP NO. 9 on G/F Thriving Industrial Centre, 26-38 Sha Tsui Road, TSUEN WAN.

GROSS AREA : 2,747 sq. ft.

YEAR OF COMPLETION : 1989

NET AREA : 1,963 sq. ft.

HEADROOM : 17' 3"



GROUND FLOOR PLAN

沙明道 匯力工業中心



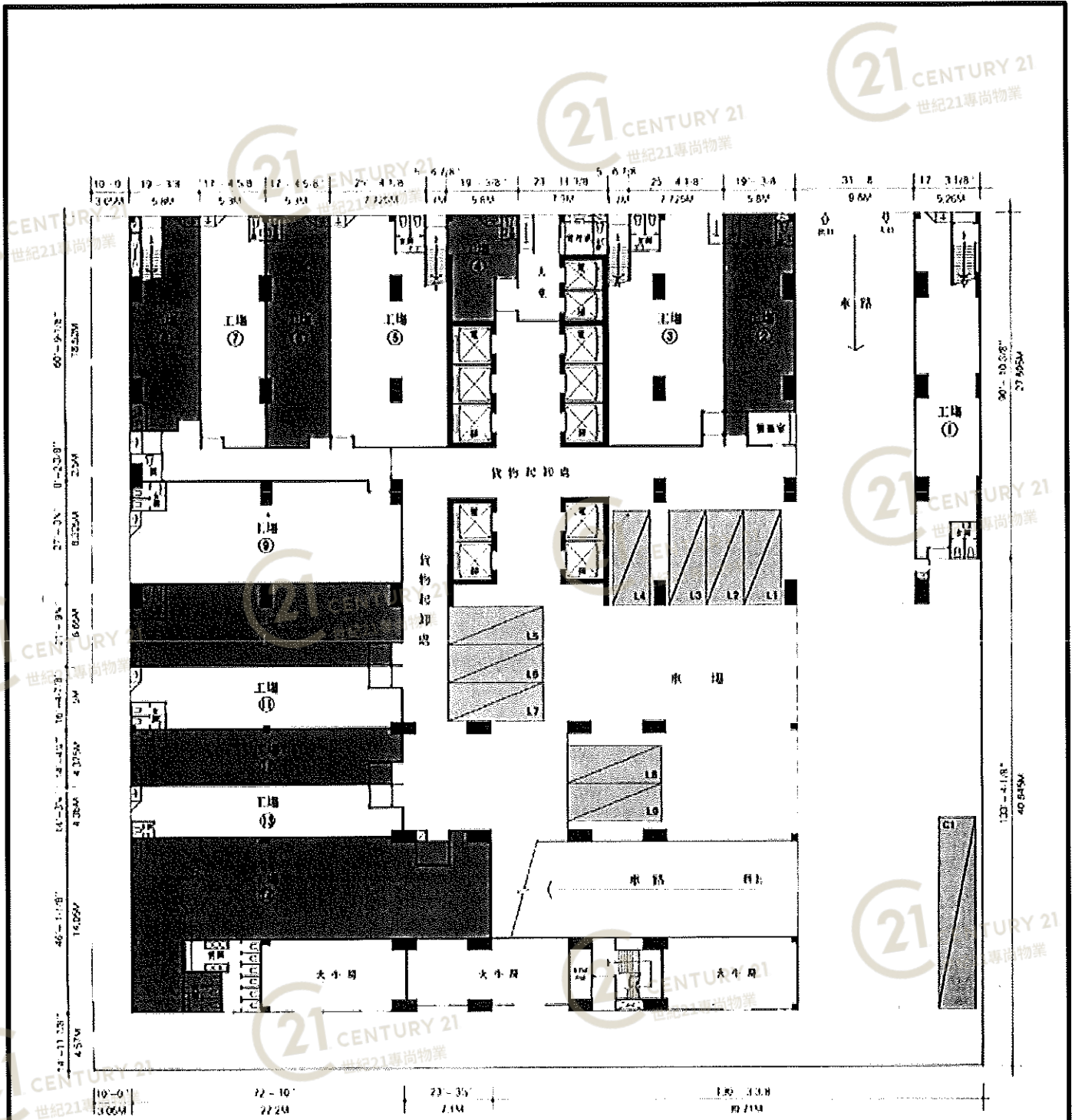
匯力工業中心 Thriving Industrial Centre

NOT TO SCALE, FOR IDENTIFICATION PURPOSE ONLY

圖中所有數據比例，一概只作參考之用

平面圖

Floor Plan



Ground Floor Plan



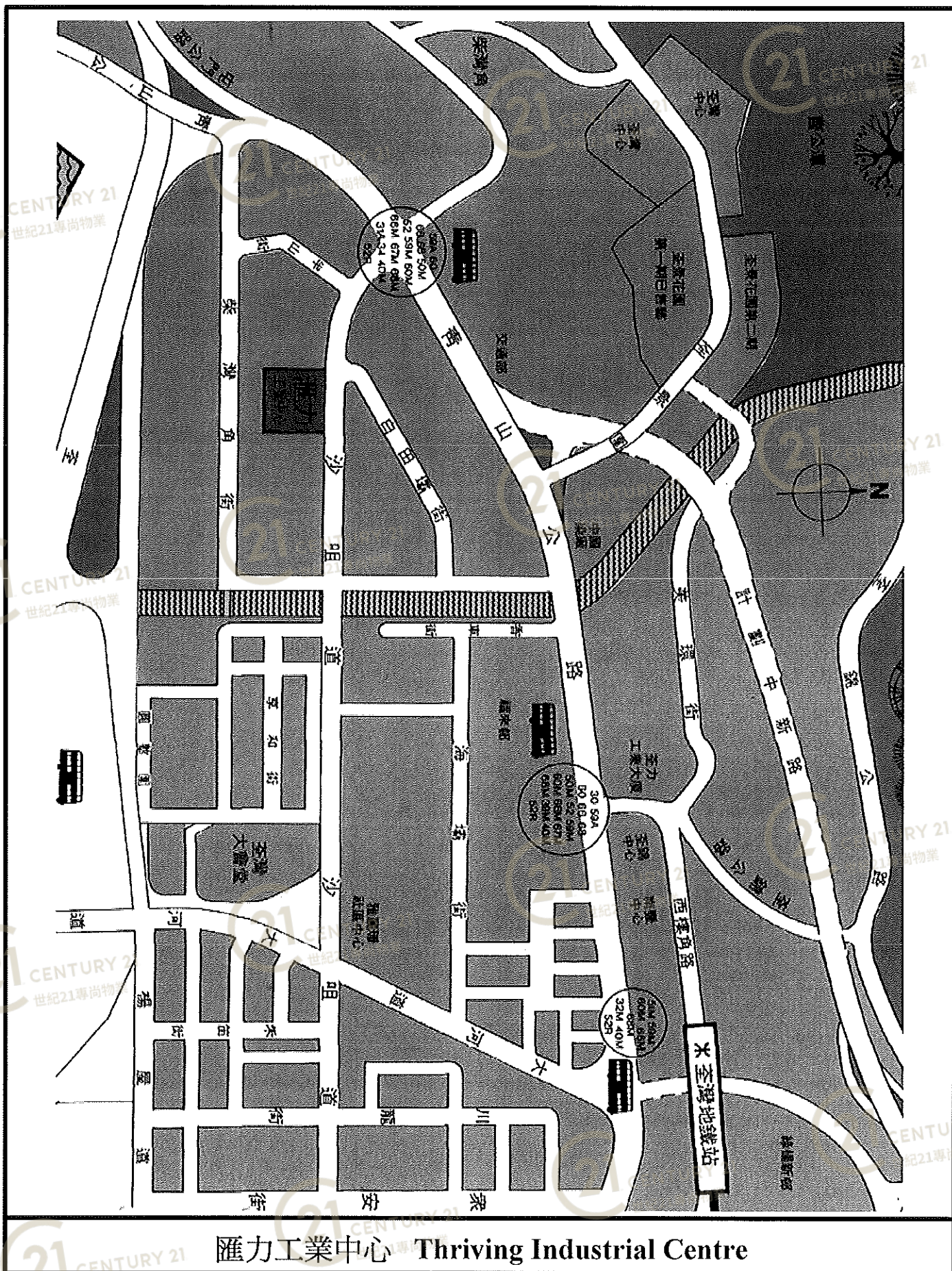
匯力工業中心 Thriving Industrial Centre

NOT TO SCALE, FOR IDENTIFICATION PURPOSE ONLY

圖中所有數據比例，一概只作參考之用

平面圖

Floor Plan



NOT TO SCALE, FOR IDENTIFICATION PURPOSE ONLY

圖中所有數據比例，一概只作參考之用

外觀圖

Building Outlook



匯力工業中心 Thriving Industrial Centre

NOT TO SCALE, FOR IDENTIFICATION PURPOSE ONLY

圖中所有數據比例，一概只作參考之用